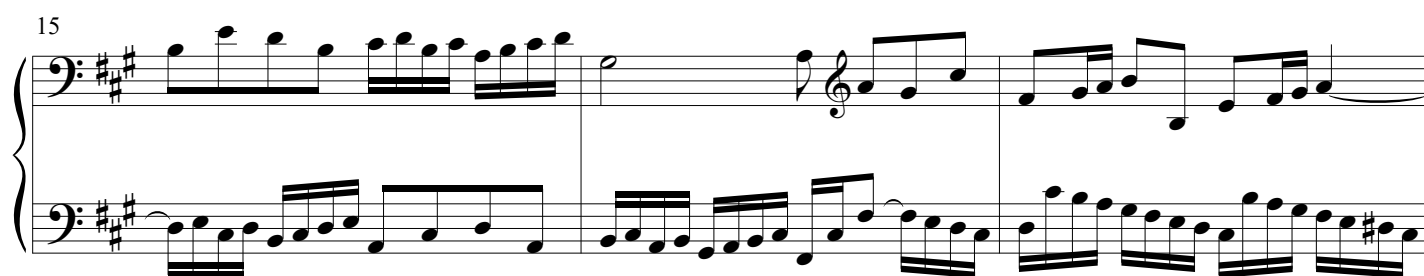
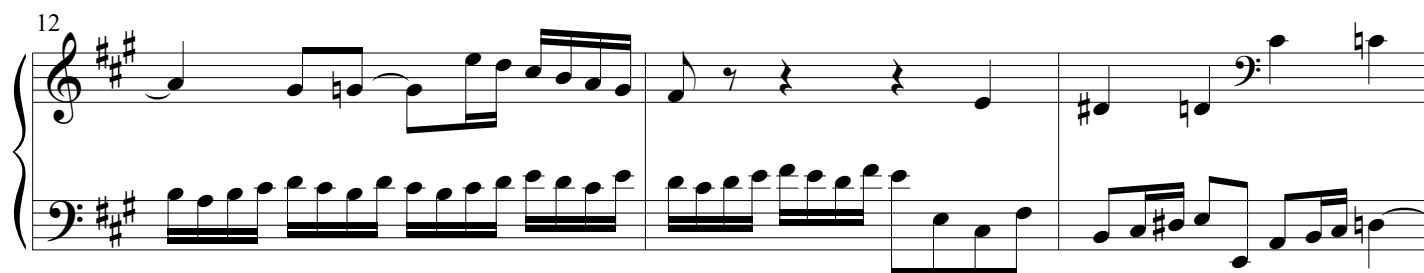
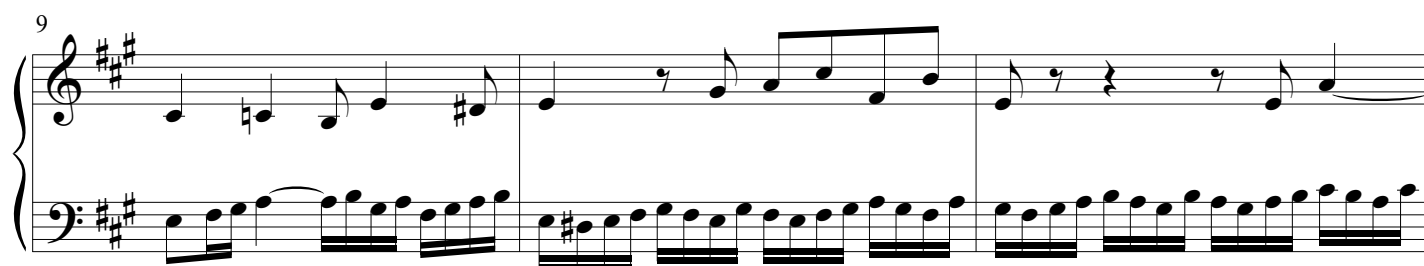
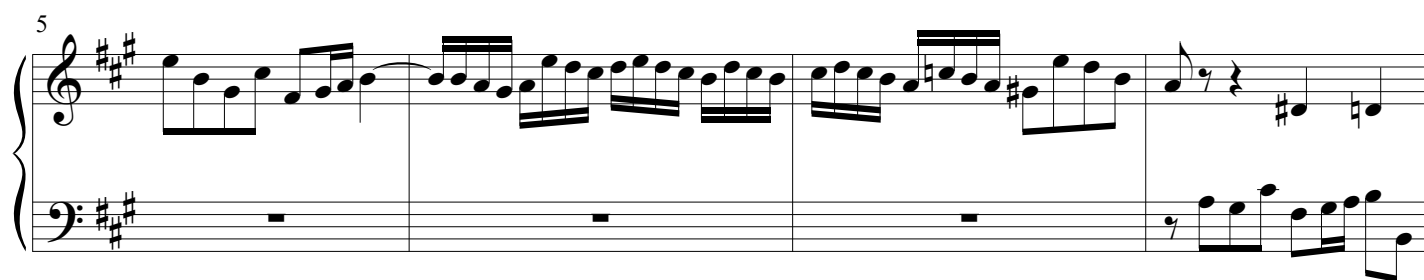
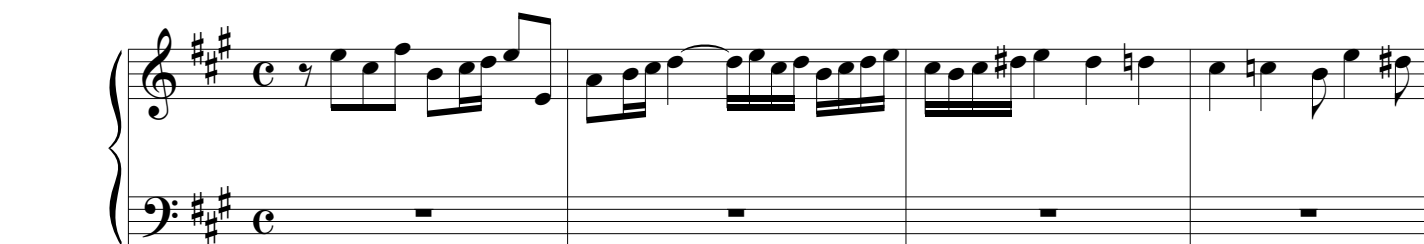


Fuga XVII

BWV 886

J. Sebastian Bach
Arr. Peter H. Besseling



18

Measures 18-20 of the piece. Measure 18 features a treble clef with a key signature of two sharps (F# and C#) and a bass clef with a key signature of two sharps (F# and C#). The treble staff contains a series of eighth and sixteenth notes, while the bass staff contains a series of eighth and sixteenth notes. Measure 19 continues the melodic lines. Measure 20 shows a continuation of the complex rhythmic patterns.

21

Measures 21-23 of the piece. Measure 21 continues the melodic lines. Measure 22 features a treble clef with a key signature of two sharps (F# and C#) and a bass clef with a key signature of two sharps (F# and C#). The treble staff contains a series of eighth and sixteenth notes, while the bass staff contains a series of eighth and sixteenth notes. Measure 23 shows a continuation of the complex rhythmic patterns.

24

Measures 24-26 of the piece. Measure 24 continues the melodic lines. Measure 25 features a treble clef with a key signature of two sharps (F# and C#) and a bass clef with a key signature of two sharps (F# and C#). The treble staff contains a series of eighth and sixteenth notes, while the bass staff contains a series of eighth and sixteenth notes. Measure 26 shows a continuation of the complex rhythmic patterns.

27

Measures 27-29 of the piece. Measure 27 continues the melodic lines. Measure 28 features a treble clef with a key signature of two sharps (F# and C#) and a bass clef with a key signature of two sharps (F# and C#). The treble staff contains a series of eighth and sixteenth notes, while the bass staff contains a series of eighth and sixteenth notes. Measure 29 shows a continuation of the complex rhythmic patterns.

30

Measures 30-32 of the piece. Measure 30 continues the melodic lines. Measure 31 features a treble clef with a key signature of two sharps (F# and C#) and a bass clef with a key signature of two sharps (F# and C#). The treble staff contains a series of eighth and sixteenth notes, while the bass staff contains a series of eighth and sixteenth notes. Measure 32 shows a continuation of the complex rhythmic patterns.

33

Measures 33-35 of the piece. Measure 33 continues the melodic lines. Measure 34 features a treble clef with a key signature of two sharps (F# and C#) and a bass clef with a key signature of two sharps (F# and C#). The treble staff contains a series of eighth and sixteenth notes, while the bass staff contains a series of eighth and sixteenth notes. Measure 35 shows a continuation of the complex rhythmic patterns.

36

Measures 36-38 of the piece. Measure 36: Treble clef has a half note G4, a half note A4, and a half note B4. Bass clef has a whole rest. Measure 37: Treble clef has a half note G4, a half note A4, and a half note B4. Bass clef has a quarter note G2, a quarter note A2, and a quarter note B2. Measure 38: Treble clef has a half note G4, a half note A4, and a half note B4. Bass clef has a quarter note G2, a quarter note A2, and a quarter note B2.

39

Measures 39-41 of the piece. Measure 39: Treble clef has a half note G4, a half note A4, and a half note B4. Bass clef has a quarter note G2, a quarter note A2, and a quarter note B2. Measure 40: Treble clef has a half note G4, a half note A4, and a half note B4. Bass clef has a quarter note G2, a quarter note A2, and a quarter note B2. Measure 41: Treble clef has a half note G4, a half note A4, and a half note B4. Bass clef has a quarter note G2, a quarter note A2, and a quarter note B2.

42

Measures 42-44 of the piece. Measure 42: Treble clef has a half note G4, a half note A4, and a half note B4. Bass clef has a quarter note G2, a quarter note A2, and a quarter note B2. Measure 43: Treble clef has a half note G4, a half note A4, and a half note B4. Bass clef has a quarter note G2, a quarter note A2, and a quarter note B2. Measure 44: Treble clef has a half note G4, a half note A4, and a half note B4. Bass clef has a quarter note G2, a quarter note A2, and a quarter note B2.

45

Measures 45-47 of the piece. Measure 45: Treble clef has a half note G4, a half note A4, and a half note B4. Bass clef has a quarter note G2, a quarter note A2, and a quarter note B2. Measure 46: Treble clef has a half note G4, a half note A4, and a half note B4. Bass clef has a quarter note G2, a quarter note A2, and a quarter note B2. Measure 47: Treble clef has a half note G4, a half note A4, and a half note B4. Bass clef has a quarter note G2, a quarter note A2, and a quarter note B2.

48

Measures 48-50 of the piece. Measure 48: Treble clef has a half note G4, a half note A4, and a half note B4. Bass clef has a quarter note G2, a quarter note A2, and a quarter note B2. Measure 49: Treble clef has a half note G4, a half note A4, and a half note B4. Bass clef has a quarter note G2, a quarter note A2, and a quarter note B2. Measure 50: Treble clef has a half note G4, a half note A4, and a half note B4. Bass clef has a quarter note G2, a quarter note A2, and a quarter note B2.