

# Praeludium et Fuga XV

BWV 884

J. SEBASTIAN BACH

PETER H. BESSELING

5

9

13

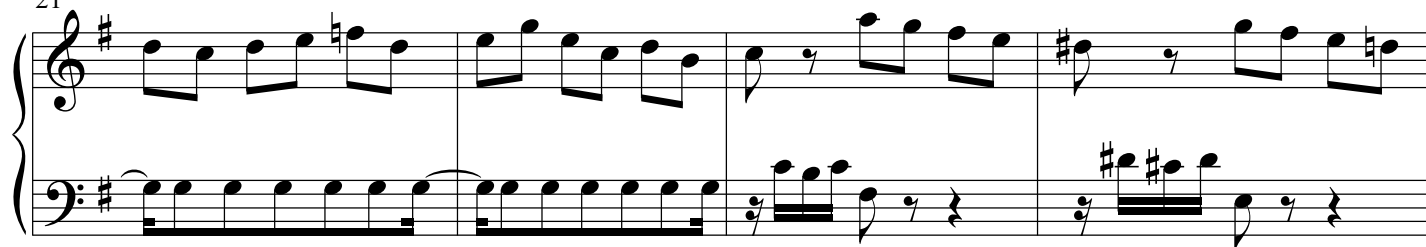
17

*p* *p* *p*

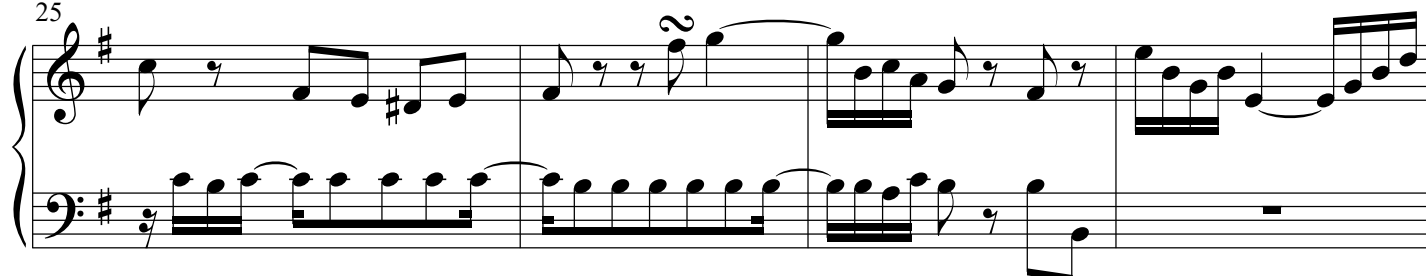
2

**Praeludium et Fuga XV - PIANO I**

21



25



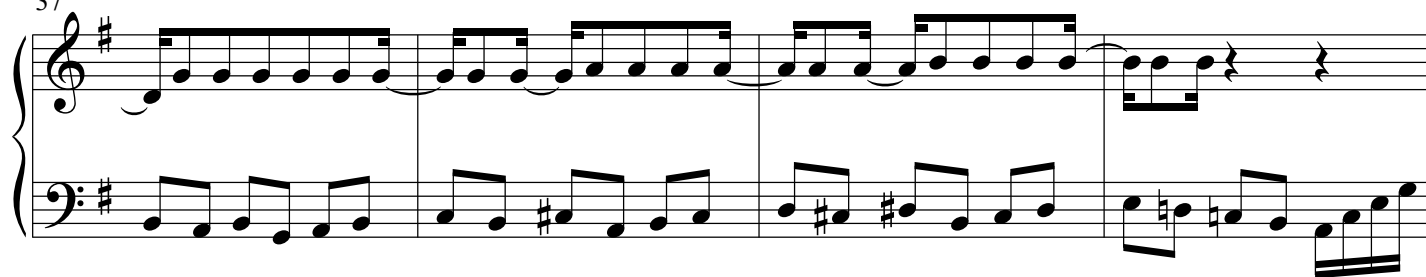
29



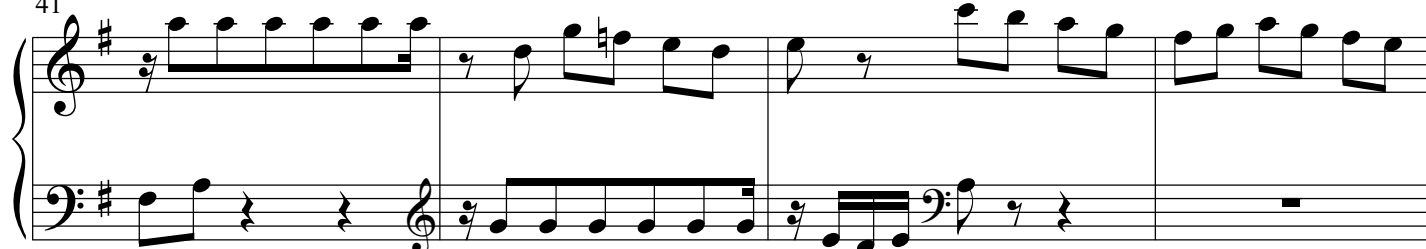
33



37



41



45

## Fuga

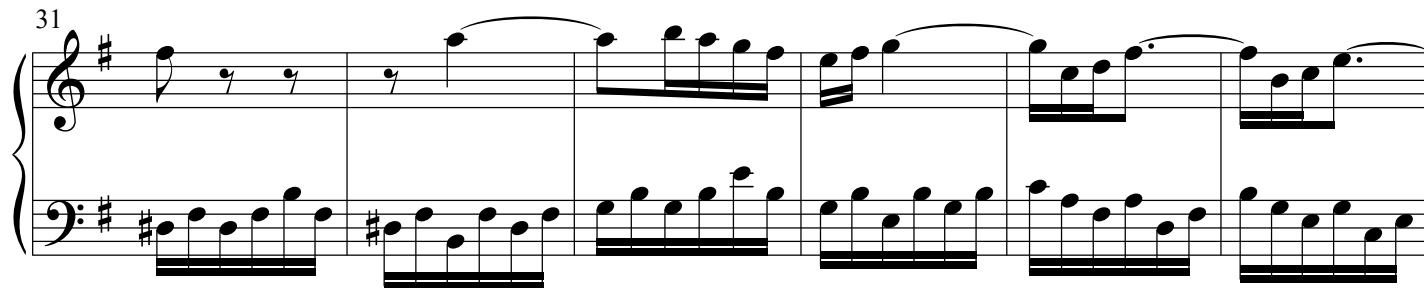
7

13

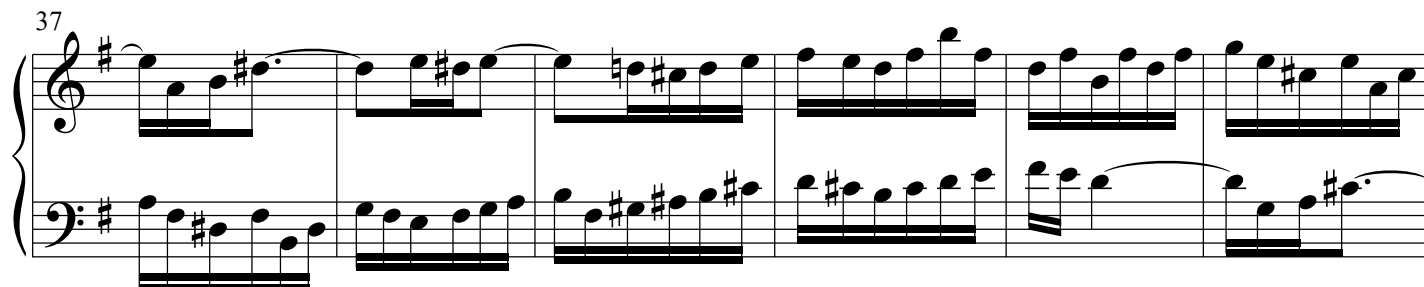
19

25

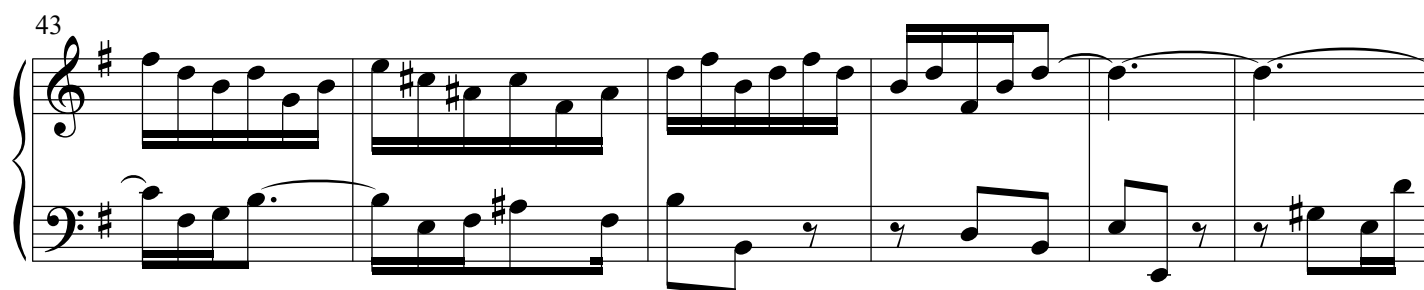
31



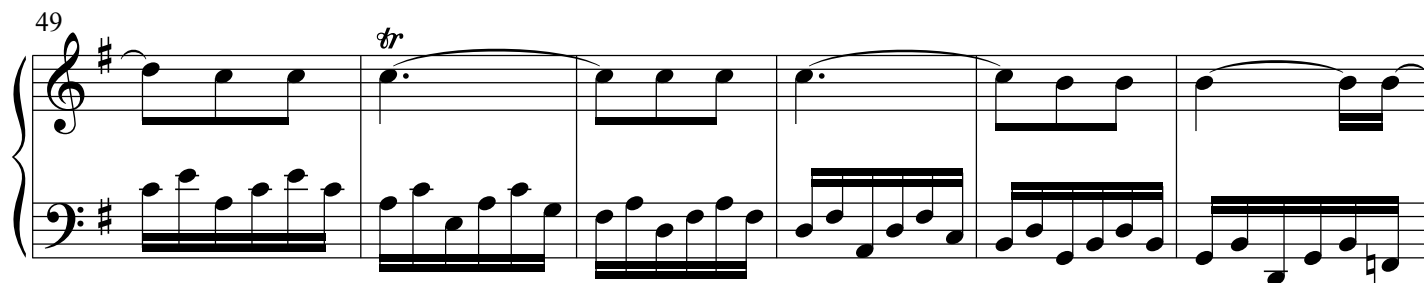
37



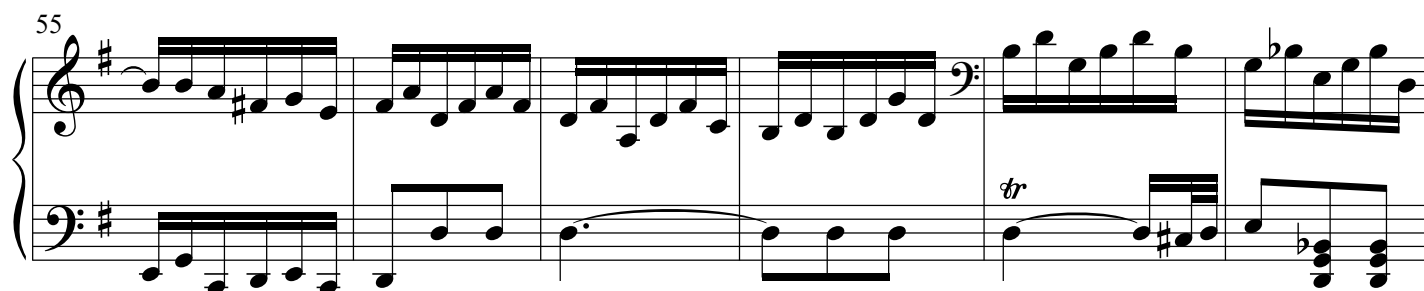
43



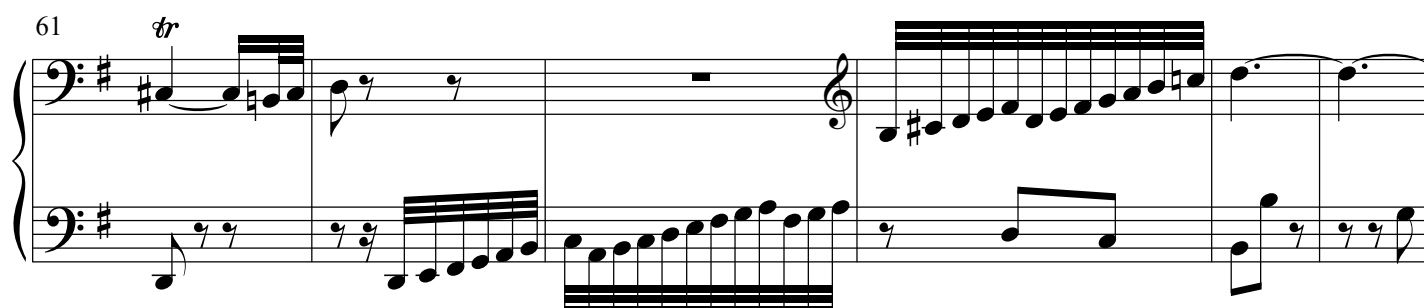
49



55



61



**Praeludium et Fuga XV - PIANO I**

5

67

This musical score segment covers measures 67 through 72 of the piece. It is written for piano in G major (one sharp) and 4/4 time. The notation is in grand staff, with a treble and bass clef joined by a brace. Measure 67 begins with a treble staff containing a half note G4, a quarter note A4, and a half note B4, all beamed together. The bass staff has a half note G2, a quarter note F2, and a half note E2, also beamed. Measure 68 continues with a treble staff of a half note C5, a quarter note B4, and a half note A4, and a bass staff of a half note D2, a quarter note C2, and a half note B1. Measure 69 features a treble staff with a half note G4, a quarter note A4, and a half note B4, and a bass staff with a half note C2, a quarter note B1, and a half note A1. Measure 70 shows a treble staff with a half note G4, a quarter note A4, and a half note B4, and a bass staff with a half note C2, a quarter note B1, and a half note A1. Measure 71 contains a treble staff with a half note G4, a quarter note A4, and a half note B4, and a bass staff with a half note C2, a quarter note B1, and a half note A1. Measure 72 concludes with a treble staff of a half note G4, a quarter note A4, and a half note B4, and a bass staff of a half note C2, a quarter note B1, and a half note A1. The piece ends with a double bar line.