

Violin II

Casals Dreams about Birds

for string orchestra

Andante e maestoso ♩ = 84

Tamás Beischer-Matyó

Measures 1-6 of the Violin II part. The notation is in treble clef with a key signature of two flats. The time signature changes from 3/2 to 4/4 and back to 3/2. The first measure has a whole rest. The second measure has a whole rest. The third measure has a whole rest. The fourth measure has a whole rest. The fifth measure has a half note G4, quarter note F#4, and quarter note E4, all beamed together. The sixth measure has a half note D4. The dynamic is *pp* and the articulation is *legato*.

Measures 7-12 of the Violin II part. Measure 7 has a whole rest. Measure 8 has a whole rest. Measure 9 has a whole rest. Measure 10 has a whole rest. Measure 11 has a half note G4, quarter note F#4, and quarter note E4, all beamed together. Measure 12 has a half note D4. The dynamic is *mp*. There are trills (*tr*) and trills with grace notes (*trb*) in measures 11 and 12. The tempo marking *rit.* is above measure 12.

Measures 13-17 of the Violin II part. Measure 13 is marked (solo) and has a half note G4, quarter note F#4, and quarter note E4, all beamed together. Measure 14 has a half note D4, quarter note C4, and quarter note B3, all beamed together. Measure 15 has a half note A3, quarter note G3, and quarter note F#3, all beamed together. Measure 16 has a half note E3, quarter note D3, and quarter note C3, all beamed together. Measure 17 has a half note B2, quarter note A2, and quarter note G2, all beamed together. The dynamic is *p dolce*. There are trills (*tr*) and trills with grace notes (*trb*) in measures 13, 14, 15, 16, and 17.

Measures 18-23 of the Violin II part. Measure 18 has a half note G4, quarter note F#4, and quarter note E4, all beamed together. Measure 19 has a half note D4, quarter note C4, and quarter note B3, all beamed together. Measure 20 has a half note A3, quarter note G3, and quarter note F#3, all beamed together. Measure 21 has a half note E3, quarter note D3, and quarter note C3, all beamed together. Measure 22 has a half note B2, quarter note A2, and quarter note G2, all beamed together. Measure 23 has a half note F#2, quarter note E2, and quarter note D2, all beamed together. The dynamic is *f*. The tempo marking *poco rall. Molto espressivo* is above measure 21. There are trills (*tr*) and trills with grace notes (*trb*) in measures 18, 19, 20, 21, 22, and 23.

Measures 24-30 of the Violin II part. Measure 24 has a half note G4, quarter note F#4, and quarter note E4, all beamed together. Measure 25 has a half note D4, quarter note C4, and quarter note B3, all beamed together. Measure 26 has a half note A3, quarter note G3, and quarter note F#3, all beamed together. Measure 27 has a half note E3, quarter note D3, and quarter note C3, all beamed together. Measure 28 has a half note B2, quarter note A2, and quarter note G2, all beamed together. Measure 29 has a half note F#2, quarter note E2, and quarter note D2, all beamed together. Measure 30 has a half note C2, quarter note B1, and quarter note A1, all beamed together. The dynamic is *fff*. The tempo marking *legato* is below measure 24. The tempo marking *(unis.)* is above measure 28.

Measures 31-36 of the Violin II part. Measure 31 has a half note G4, quarter note F#4, and quarter note E4, all beamed together. Measure 32 has a half note D4, quarter note C4, and quarter note B3, all beamed together. Measure 33 has a half note A3, quarter note G3, and quarter note F#3, all beamed together. Measure 34 has a half note E3, quarter note D3, and quarter note C3, all beamed together. Measure 35 has a half note B2, quarter note A2, and quarter note G2, all beamed together. Measure 36 has a half note F#2, quarter note E2, and quarter note D2, all beamed together. The dynamic is *pp*. The tempo marking *molto rall.* is above measure 31. The tempo marking *Adagio* is above measure 33. The tempo marking *più rall.* is above measure 35. The tempo marking *rit.* is above measure 36.

Copyright Tamás Beischer-Matyó, 2021

www.beischermatyo.hu/casals_dreams_about_birds

This work is licensed under the Creative Commons Attribution-NonCommercial-NoDerivatives 4.0 International License. To view a copy of this license, visit www.creativecommons.org/licenses/by-nc-nd/4.0/

38 Cantabile ♩ = 69 rit. - - a tempo

4

ten. ten.

p espr.

48 ten. ten. rit. - - a tempo ten. ten.

53 ten. ten. ten. rall. - - - Adagio ♩ = 63 rit. - - - Cantabile ♩ = 69

pp *mp* espr.

pp *mp* espr.

59 rit. - - -

64 Molto espressivo ♩ = 108 rall. - - - - - Cantabile ♩ = 69

pp *f* *pp* *f* *ff* *ppp* *p* espr. *ten.*

pp *f* *pp* *f* *ff* *ppp* *p* espr. *ten.*

70 rit. - - - - -

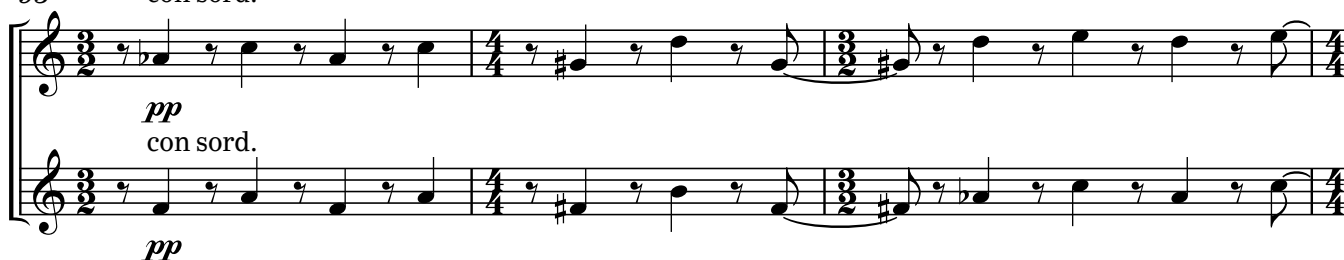
f *pp*

76 Andante e maestoso $\text{♩} = 84$ 

82

88 rall. - - - - - al $\text{♩} = 48$ 

93 con sord.



96



100

