

Louis Spohr

Symphony No.1, Op. 20

I.

Adagio

6

12

17

21

29

36

46

52

58

64

f *p* *pp* *cresc.* *f* *f* *p* *fp* *fp* *fp* *f*

p *pp* *f* *fp* *fp* *sfz* *p*

A **B**

f *pp* *f* *f*

71

77

82 **C**

92

101 **D**

109

112

pp

sfz *sfz* *p* *f* *p*

ff *dim.* *p* *ff* *dim.* *pp*

2

Violin 2

4

117

pp

122 **E**

127

134 **F**

f

141

sfz *sfz*

147 **G**

p

156

p

162

f

168 **H**

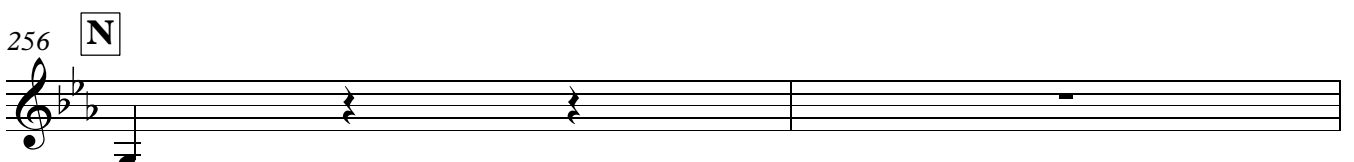
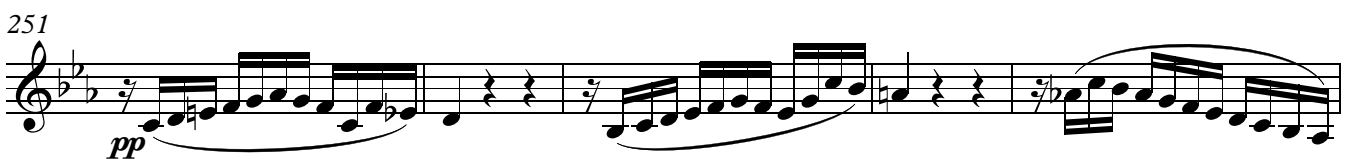
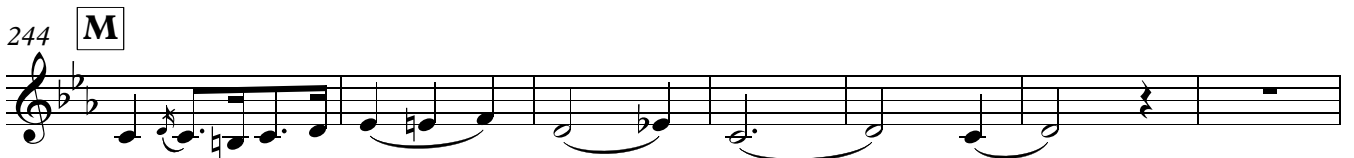
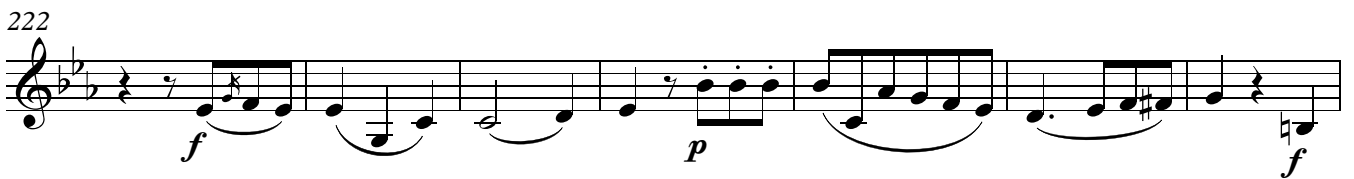
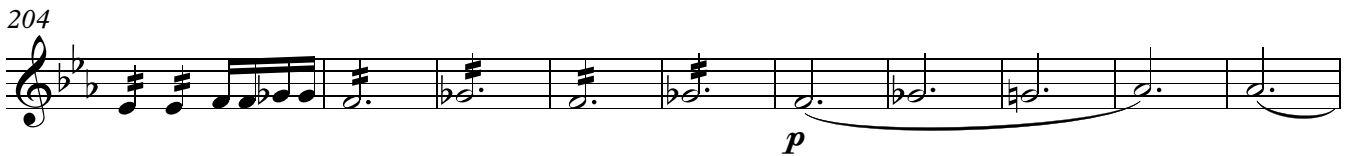
pp *f*

175 **I**

180

f

4



Violin 2

6 258

p *p* *f* *p*

266 **O**

ff *dim.* *p* *ff* *dim.* *p*

275

279

pp

286 **P** 2

pp

293

300 **Q**

f

307

sfz *sfz*

313 **R**

p *mf* *f* *p* *fp*

322 *f*

330

334

II.

1 **Larghetto con moto**

7

p *sfz* *p*

16 **A**

mf *dim.* *pp*

25 **B**

3 *sfz* *sfz*

35

sfz *sfz*

41 **C**

p *mf* *pp*

50

sfz *p* *sfz* *p* *sfz* *p*

58 **D**

6 *f* *p* *tr*

65 **E**

pp

72 **F**

cresc. *sfz* *f* *p*

79

6 *pp*

86

2

93 **G** 7 **H**

p *pp*

104 *mf* *pp*

108 *mf* *pp* *mf* *pp*

112 **I** *pp*

115 *pp* *morendo*

III.

Scherzo. Allegro

1

f *p*

6

f

13

2

pp *mf*

A

21

f *p*

29

cresc. *f* 3

39

fp *pp*

B

46

f p f p f p f p f *pp*

57

68

C

ff *p*

77

f *sfz* *sfz*

85

p *pp*

94 **D**

f *p*

101

f

108

pp *cresc.* *f*

115 **E**

p

123

f *sfp* *pp*

133

f *p* *f* *p* *f* *p* *f* *p*

140 **F**

f *p* *f* *p* *f* *p* *f* *p* *f*

150

f *p* *f* *p* *f* *p*

Trio

110

159

pp sfz sfz sfz f f p

167

f p f p sfz f p pp sfz sfz sfz f

174

G

ff p3 cresc.

181

f p f p mf

187

f pp sfz sfz sfz sfz

193

sfz sfz sfz sfz cresc. sfz sfz

199

H

f p f p f p f p

206

f p f sfz sfz sfz f p f p

212

f p p

220

I

morendo

228

f

236 **J**

p

243

f *pp* **2**

251

mf *f*

258 **K**

p

266

cresc. *f* *fp* *pp* **3**

276

2/4

283 **L**

f p f p f p f p f *pp*

293

2

302 **M**

ff *p*

311

315

f *sfz* *sfz*

Violin 2

14

320

p *pp* *f*

329 **N**

p

336

f

342

pp *cresc.* *f*

349 **O**

p

357

f *sfz* *pp*

367

f *p* *f* *p* *f* *p* *f* *p* *f*

374 **P**

f *p* *f* *p* *f* *p* *f* *p* *f* *pp*

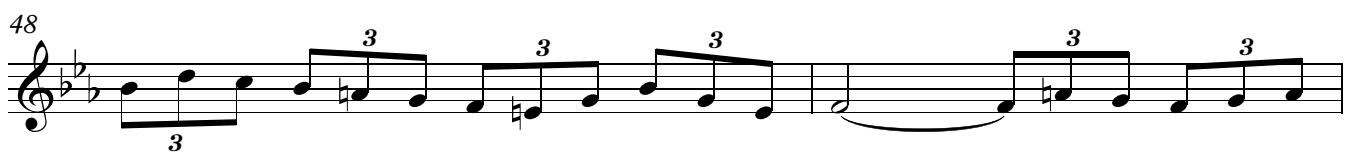
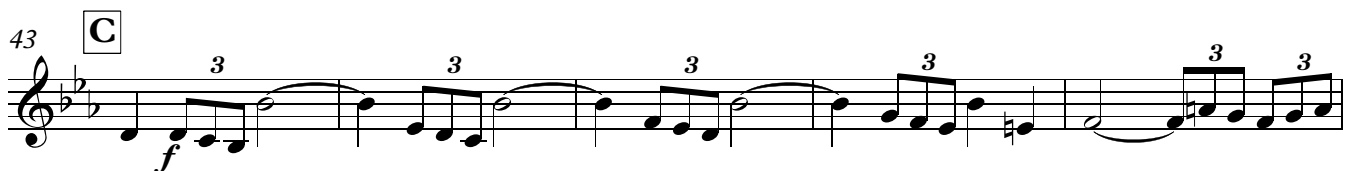
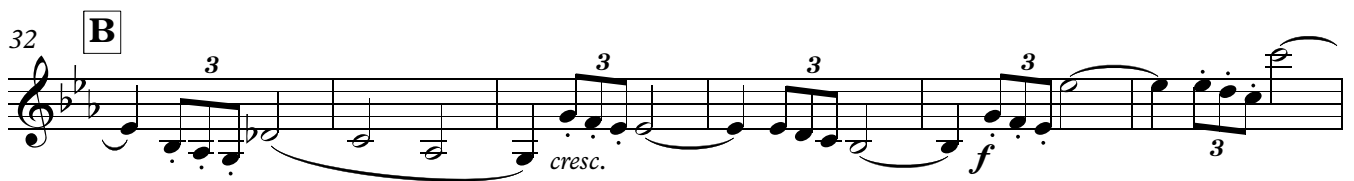
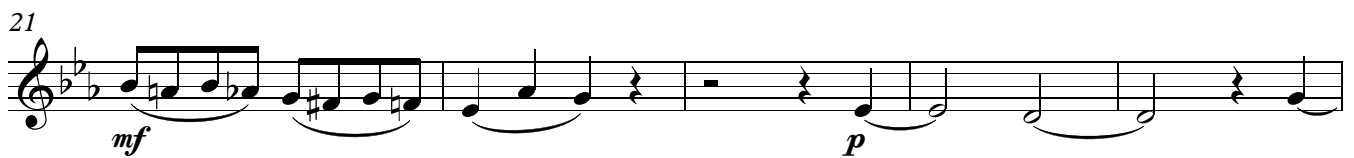
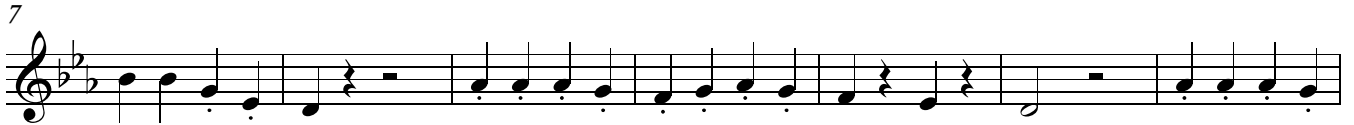
384

f

IV.

Finale. Allegretto

1



53 **D**

p

60

cresc.

66 **E**

f

71

75

p

81 **F**

ff

p

88

f

91

94 **G**

pizz.

p

arco

99

Violin 2

18

105

110

116 **H** *pp*

cresc. *f*

122 *f* *p* *f* *p*

126 *sfz* *p*

132 *mf* *poco a poco cresc.*

138 *f* **J**

142 *p* *cresc.* *f* *p*

147 **K** *cresc.* *f*

152 *f* *p* *f* *p*

156 *f* *p* *ff*

161 **L**

169 *p*

This staff contains measures 161 to 169. It begins with a treble clef and a key signature of three flats. Measure 161 starts with a half note G4, followed by eighth notes A4, Bb4, and C5. Measure 162 has a half note D5. Measure 163 has a half note E5. Measure 164 has a half note F5. Measure 165 has a half note G5. Measure 166 has a half note A5. Measure 167 has a half note B5. Measure 168 has a half note C6. Measure 169 has a half note D6. A bracket labeled '3' spans measures 163 to 165. A bracket labeled '3' spans measures 166 to 168. A dynamic marking 'p' is placed below measure 167.

170

176

This staff contains measures 170 to 176. It continues the melodic line from the previous staff. Measure 170 has a half note E5. Measure 171 has a half note F5. Measure 172 has a half note G5. Measure 173 has a half note A5. Measure 174 has a half note B5. Measure 175 has a half note C6. Measure 176 has a half note D6.

177 **M**

183 *pizz.*

This staff contains measures 177 to 183. It begins with a treble clef and a key signature of three flats. Measure 177 has a half note G4. Measure 178 has a half note A4. Measure 179 has a half note Bb4. Measure 180 has a half note C5. Measure 181 has a half note D5. Measure 182 has a half note E5. Measure 183 has a half note F5. A dynamic marking 'pizz.' is placed above measure 182.

184

193 *arco*

This staff contains measures 184 to 193. It begins with a treble clef and a key signature of three flats. Measure 184 has a half note G4. Measure 185 has a half note A4. Measure 186 has a half note Bb4. Measure 187 has a half note C5. Measure 188 has a half note D5. Measure 189 has a half note E5. Measure 190 has a half note F5. Measure 191 has a half note G5. Measure 192 has a half note A5. Measure 193 has a half note B5. A bracket labeled '3' spans measures 184 to 186. A bracket labeled '3' spans measures 187 to 189. A dynamic marking 'arco' is placed above measure 190.

194 **N**

202 *f sfz p f*

This staff contains measures 194 to 202. It begins with a treble clef and a key signature of three flats. Measure 194 has a half note G4. Measure 195 has a half note A4. Measure 196 has a half note Bb4. Measure 197 has a half note C5. Measure 198 has a half note D5. Measure 199 has a half note E5. Measure 200 has a half note F5. Measure 201 has a half note G5. Measure 202 has a half note A5. A bracket labeled '4' spans measures 194 to 197. A dynamic marking 'f' is placed below measure 198. A dynamic marking 'sfz' is placed below measure 200. A dynamic marking 'p' is placed below measure 201. A dynamic marking 'f' is placed below measure 202.

203 **O**

207

This staff contains measures 203 to 207. It begins with a treble clef and a key signature of three flats. Measure 203 has a half note G4. Measure 204 has a half note A4. Measure 205 has a half note Bb4. Measure 206 has a half note C5. Measure 207 has a half note D5. A bracket labeled '3' spans measures 203 to 205. A bracket labeled '3' spans measures 206 to 207.

208

212 *f p*

This staff contains measures 208 to 212. It begins with a treble clef and a key signature of three flats. Measure 208 has a half note G4. Measure 209 has a half note A4. Measure 210 has a half note Bb4. Measure 211 has a half note C5. Measure 212 has a half note D5. A bracket labeled '3' spans measures 208 to 210. A dynamic marking 'f' is placed below measure 211. A dynamic marking 'p' is placed below measure 212.

213

216 *f p 3 3 3 3 3 3 3 3 ff*

This staff contains measures 213 to 216. It begins with a treble clef and a key signature of three flats. Measure 213 has a half note G4. Measure 214 has a half note A4. Measure 215 has a half note Bb4. Measure 216 has a half note C5. A bracket labeled '3' spans measures 213 to 215. A dynamic marking 'f' is placed below measure 213. A dynamic marking 'p' is placed below measure 214. A dynamic marking '3' is placed below measure 215. A dynamic marking '3' is placed below measure 216. A dynamic marking 'ff' is placed below measure 216.

217 **P**

221 *p*

This staff contains measures 217 to 221. It begins with a treble clef and a key signature of three flats. Measure 217 has a half note G4. Measure 218 has a half note A4. Measure 219 has a half note Bb4. Measure 220 has a half note C5. Measure 221 has a half note D5. A bracket labeled '3' spans measures 217 to 219. A dynamic marking 'p' is placed below measure 220.

222

226

This staff contains measures 222 to 226. It begins with a treble clef and a key signature of three flats. Measure 222 has a half note G4. Measure 223 has a half note A4. Measure 224 has a half note Bb4. Measure 225 has a half note C5. Measure 226 has a half note D5.

Violin 2

20

