

2nd Trombone in C

Louis Spohr

Symphony No.1, Op. 20

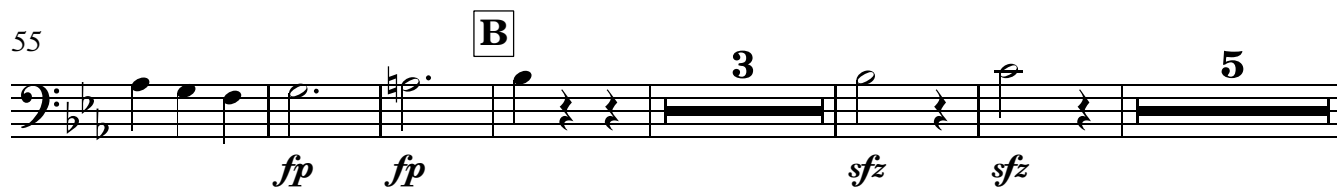
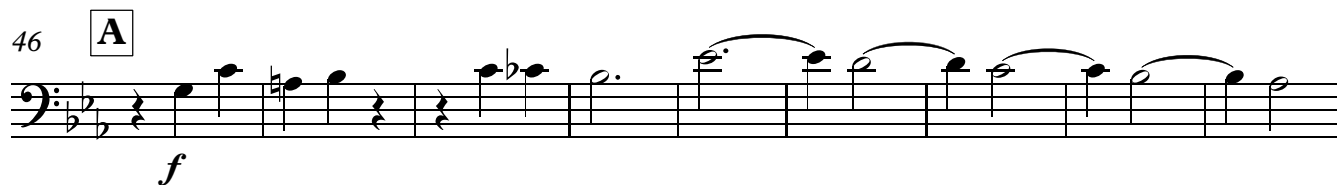
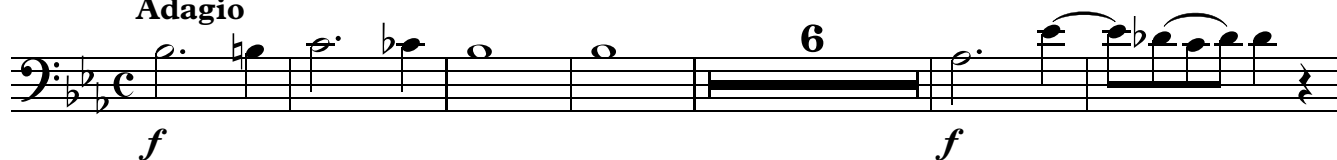
2nd Trombone in C

Symphony No.1, Op.20

Louis Spohr
(1784-1859)

I.

Adagio



134 **F**



f

140



sfz sfz

147 **G**



7 1. 3 2. 10

168 **H** **I**



7 6 Fl. 1

186 **J**



f

194



202



210 **K**



4 5 Vln. 1 *f*

223



f

231 **L**



4 8

244 **M** Ob.1

256 **N**

266 **O**

288 **P**

300 **Q**

307

313 **R**

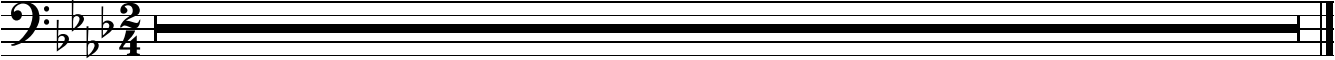
326 **S**

332

II.

1 **Larghetto con moto**

TACET



Scherzo. Allegro

4

9

10

25

Vln. 1

55

9

71

C

7

Fl.1

83

Cl.1

$$f$$
 $\mathcal{S}fz$

94

D

4

$$f$$

104

8

115

E

25

F

Vln. 1

144

$$f$$

159 **Trio**
Vln. 1

7

172 **G**

ff

178 **H** Vln. 1

21 10

213 **I** Vln. 1

11

228 **J**

4

f f

245 **K**

25 **L** Vln. 1

289 **M**

7

Fl. 1

5

ff

311 Fl. 1

318 **10** **N**

333 **4** **8**

349 **O** **25** **P** Vln. 1

379 **8**

f *sfz* *f*

sfz *f*

f

f

f

Detailed description: This block contains five staves of musical notation for the 2nd Trombone in C. The notation is in bass clef with a key signature of two flats (B-flat and E-flat). Measure numbers 311, 318, 333, 349, and 379 are indicated at the start of their respective staves. Various musical symbols are present, including dynamic markings (*f*, *sfz*), articulation marks (accents, slurs), and performance instructions in boxes (N, O, P). Measure rests are labeled with numbers 4, 10, 25, and 8. The score concludes with a double bar line at the end of the fifth staff.

Finale. Allegretto

IV.

1 16 **A** Vln. 1

20 11 **B** Vln. 1

35 3 **C**

43 **D** 11 Vln. 1

51 11 **E**

66 **F** 4

81 **G** 9

89

94

104

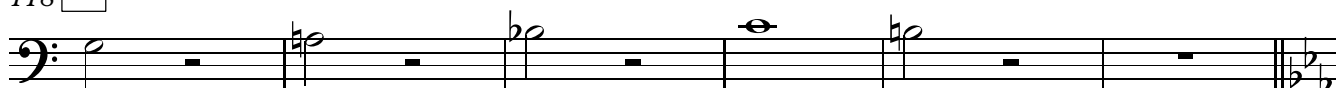
Vln. 1



110

6

Vln. 1

118 **H***f*

124

128 **I**

12

J

Vln. 1



143

5

K

Vln. 1

*f*

152



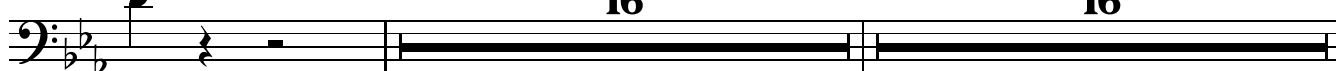
157

*ff*162 **L**

16

M

16

195 **N** Fl. 1*f*

200 **O**

f

207 *f*

213 *ff*

219 **P** 12 Fl.1

233 **Q** *f*

239 3

247 **R** 4 *ff* *f*

255

260 **S** 5 *f*

268 *ff*