

1st Bassoon

Louis Spohr

Symphony No.1, Op. 20

**I.**

**Adagio**

Measures 1-17 of the Adagio section. The key signature has two flats (B-flat and E-flat), and the time signature is common time (C). The music is written in bass clef. Measure 1 starts with a forte (*f*) dynamic. Measures 8-11 feature a rapid ascending scale. Measures 12-15 show a dynamic shift from piano (*p*) to crescendo (*cresc.*) and then forte (*f*). Measure 17 ends with a piano (*p*) dynamic.

**Allegro**

Measures 14-67 of the Allegro section. The key signature remains two flats, but the time signature changes to 3/4. Measure 14 is marked with a repeat sign. Measure 15 includes a first flute (*Fl.1*) entry. The section contains two marked sections: Section A (measures 46-50) and Section B (measures 58-67). Dynamics include piano (*p*), fortissimo (*sfz*), piano (*p*), fortissimo (*fp*), and pianissimo (*pp*). The section concludes with a forte (*f*) dynamic in measure 67.

74 *pp*

82 **C** *p* *f* *sfz* *sfz* 6

94 *p* *f* *p* *sfz* *sfz*

101 **D** *ff* *dim.* *p* *ff* *dim.* *p*

110

116 **E** *p* 5

126 *sfz* 3

134 **F** *f*

140 *sfz* *sfz*

147 **G** 7 1. 3 2. 5

## 1st Bassoon

4

163



168

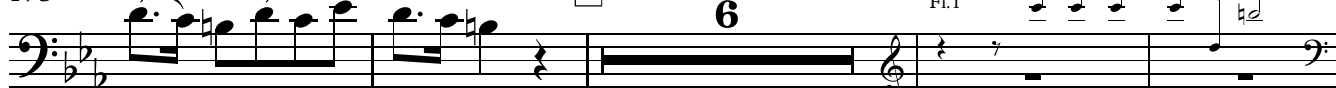
**H**

173

**I**

6

Fl. 1



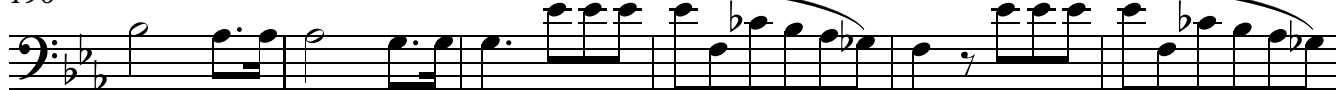
183



189

**J**

196



202



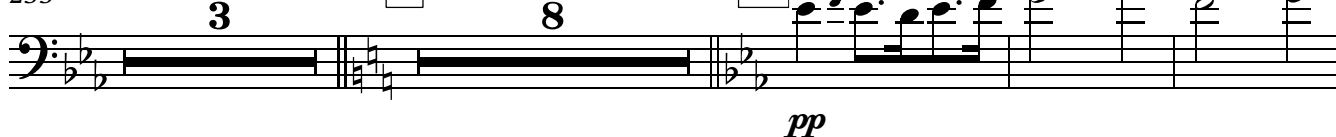
210

**K**

226



233

**L****M**

247



1st Bassoon

256 **N**

*f* *sfz* *sfz* *p* *f*

262

*p* *sfz* *sfz*

267 **O**

*ff* *dim.* *p* *ff* *dim.* *p*

277

*p*

288 **P**

*f*

300 **Q**

306

*sfz* *sfz*

313 **R**

*p* *cresc.* *fp* *fp* *f*

323 **S**

332

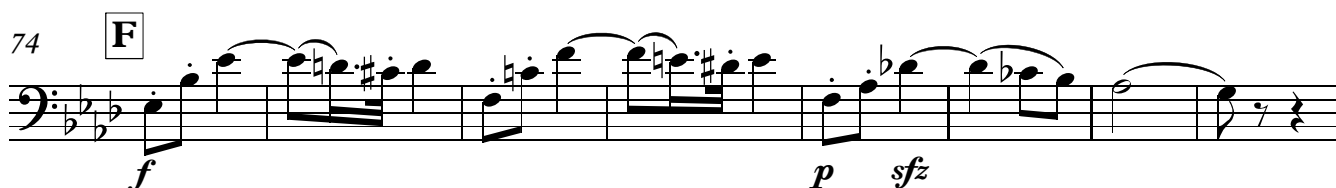
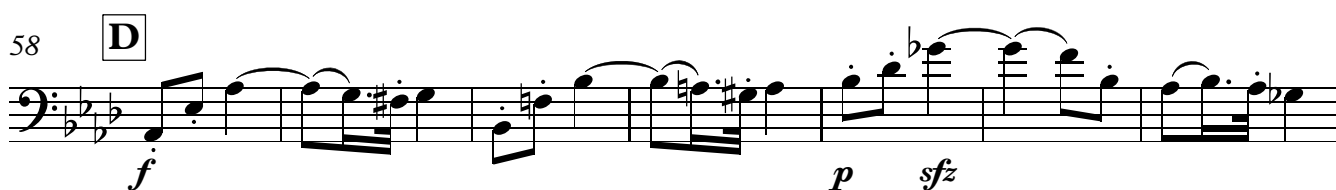
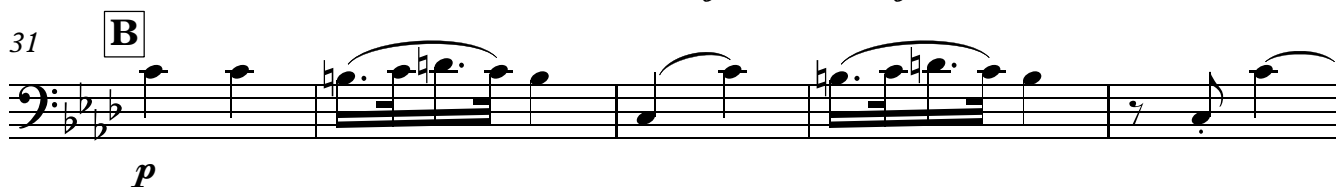
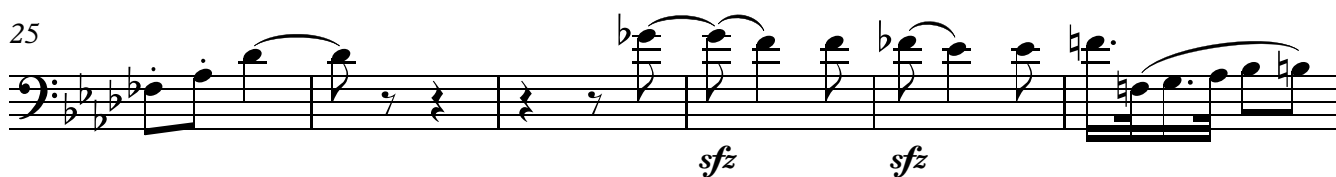
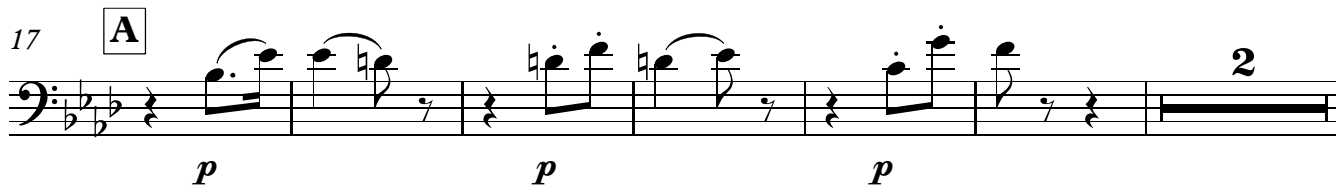
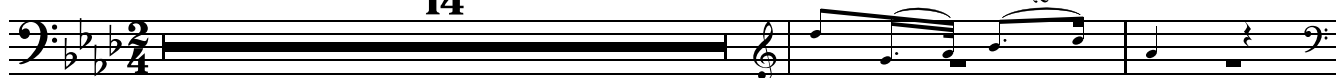
335

## II.

1 **Larghetto con moto**

14

Vln. 1



92 **G**

*p*

101 **H**

*pp* *simile* *sfz> pp* *sfz> pp*

110 **I**

*sfz>* *pp* *p*

5

## III.

## Scherzo. Allegro

1

*f* *p*

7

*f*

13

5

*p* *p* *f*

23 **A**

*p* *p*

31

*cresc.* *f* *p*

38

4

*pp* *fp* *p*

48 **B**

3

*fp* *fp* *fp* *fp* *f* *pp*

61

*p* *ff*

69 **C**

*p*

77

4 5

*f* *f*



90

*p* *pp* *f* **D**

98

*p* *f*

105

*p* *f* **5**

115 **E**

*p* *p cresc.* **4**

125

*f* *sf* *f* **3** **7**

140 **F**

*fp* *fp* *fp* *fp* *f* **F**

149

*pp* *pp* **3** **3**

## 1st Bassoon

10

159 **Trio** *2nd time only*

Vln. 1

168

174 **G**

182

188

194

199 **H**

208

215

222 **I**

234 **J**

*ff* *p* *cresc.* *sfz* *fp* *p* *3* *3* *p* *3* *3* *cresc.* *3* *3* *3* *sfz* *sfz* *p* *3* *mf* *f* *3* *pp* *p* *3* *3* *cresc.* *3* *3* *3* *f* *f* *3* *sfz* *sfz* *sfz* *fp* *fp* *fp* *p* *p* *sfz* *3* *3* *p* *sfz* *3* *3* *3* *6* *p* *2* *f* *p*

243 *f* *p* 5

255 *p* *f* *p* [K]

263 *p* *cresc.* *f*

271 *p* *pp* *fp* 4 *p*

282 [L] *fp* *fp* *fp* *fp* *f*

292 3 *pp* *p* *ff*

302 [M] *p*

311 4 5 *f* *f* *p*

326 *pp* *f* [N] *p*

334 *f*

340 5

## 1st Bassoon

12

346 O

*p* *f* *p*

354 *p cresc.* *f* *sfp*

367 P *fp* *fp* *fp* *fp* *f*

382 *pp* *f*

## IV.

## Finale. Allegretto

1 A *Vln. 1* *2*

16

21 *mf* *sfz* *p* *p*

27

32 B *p* *3* *cresc.* *3* *f* *3*

37 *3* *p*

43 C *f* *3* *3* *3* *3*

## 1st Bassoon

13

48

53

**D**

60

Cl.1

66

**E**

71

79

**F**

86

92

**G**

98

104

3

4

2

## 1st Bassoon

14

112

*pp* 3 *cresc.*

118 **H**

*f* 3 3 3 3

124 **I**

3 3 Cl.1 3 3 3 3

132

3 3 3 *p*

136

3 *cresc.* *f*

140 **J**

*p* 3 3 *cresc.* 3 *f*

145 **K**

*p* *cresc.* *f* 3 3 3 3 *f* 3

150

3 3 3 3 3 3

154

*f* *p* 3 *ff*

160 **L**

*p*

167 **7** Cl.1 **2**  
*p*

179 **M**  
*p sfz*

185

190

195 **N**  
*f*

200 **O**  
*f* **3**

206 **3** **3** **3** **3** **3**

211 *f* *p* **3** *ff*

217 **P**  
*p*

221 **2**

## 1st Bassoon

16

226 Cl.1

*p*

232

*cresc.* *f* *Q* *3* *3* *3* *3*

237

*3* *3* *3* *3*

243

*3* *R* *ff* *pp*

252

*f* *3*

258

*p* *S*

264

*cresc.* *f* *3* *3*

268

*ff*