

Piano II

# Praeludium et Fuga

BWV 848

J. Sebastian Bach  
Arr. Peter H. Besseling

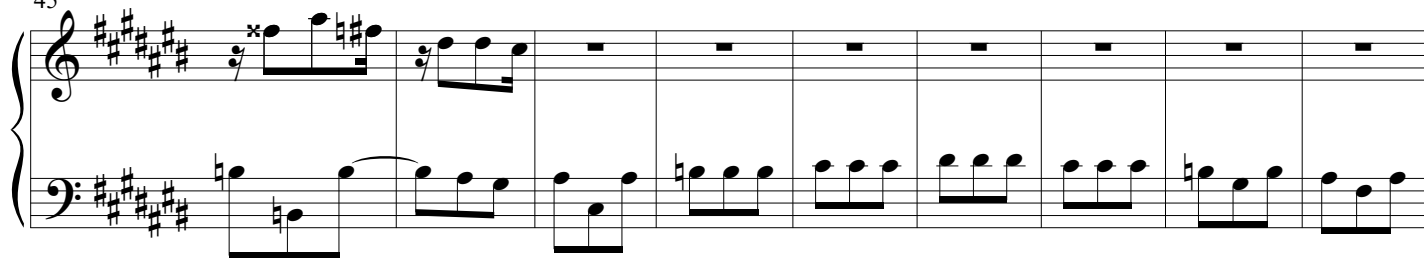
9

19

28

36

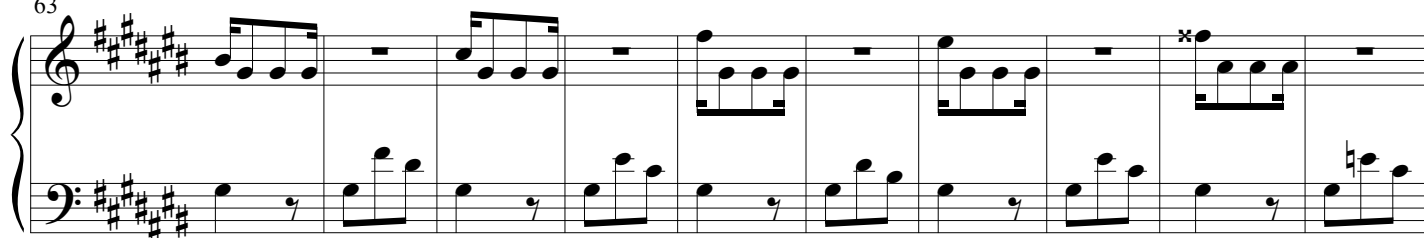
45



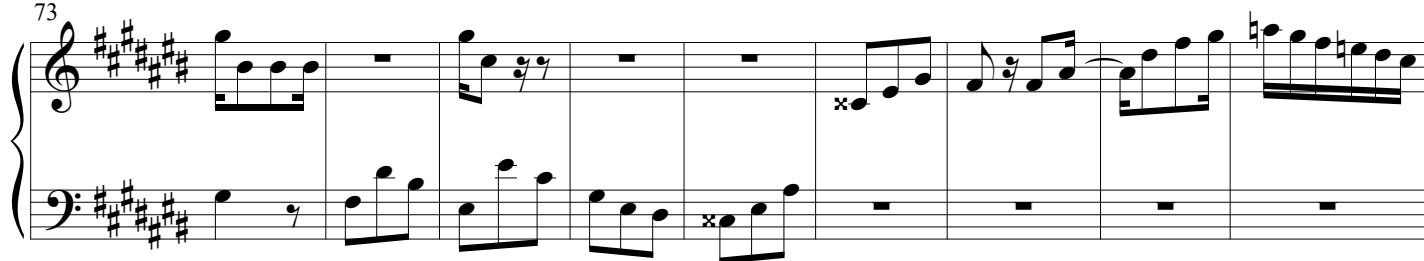
54



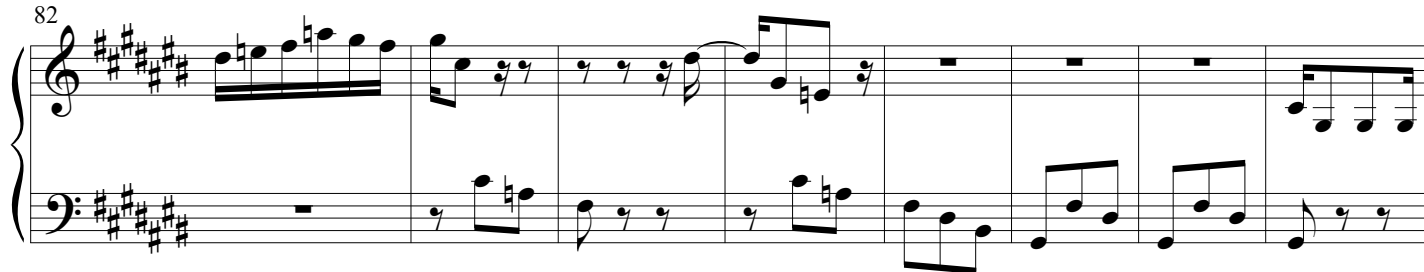
63



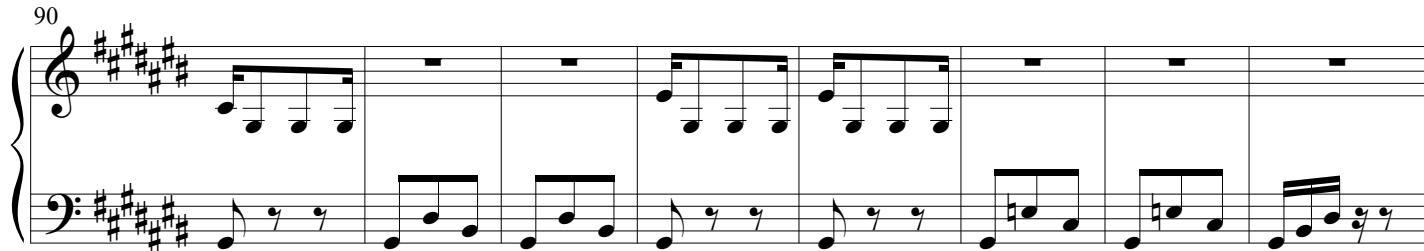
73



82



90



98

**Fuga**

2

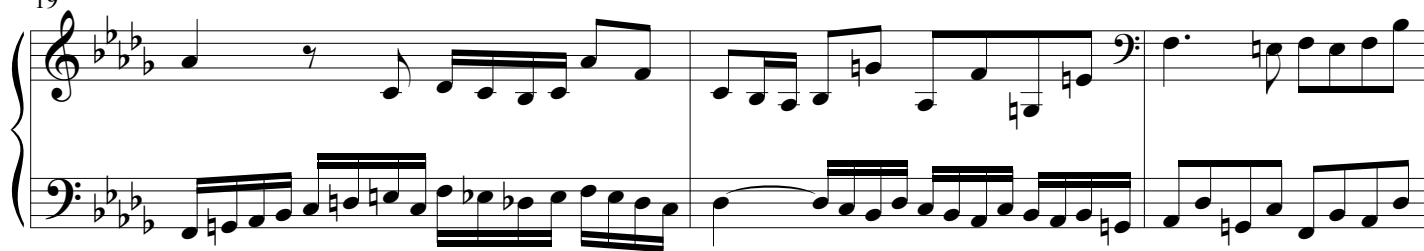
6

9

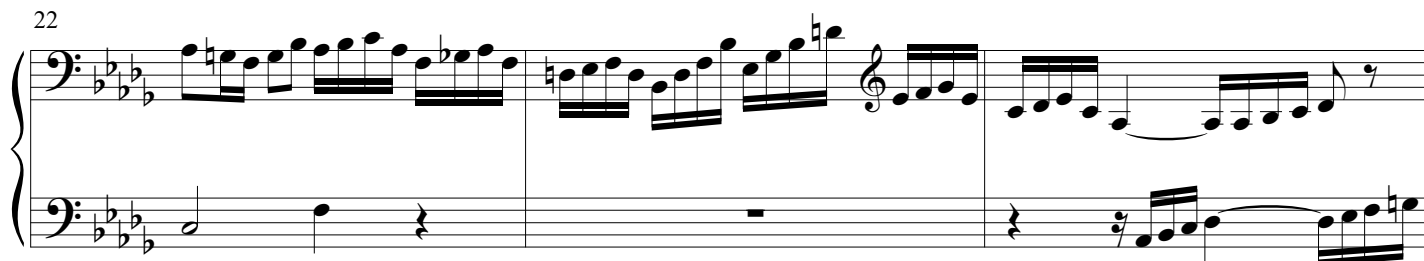
12

16

19



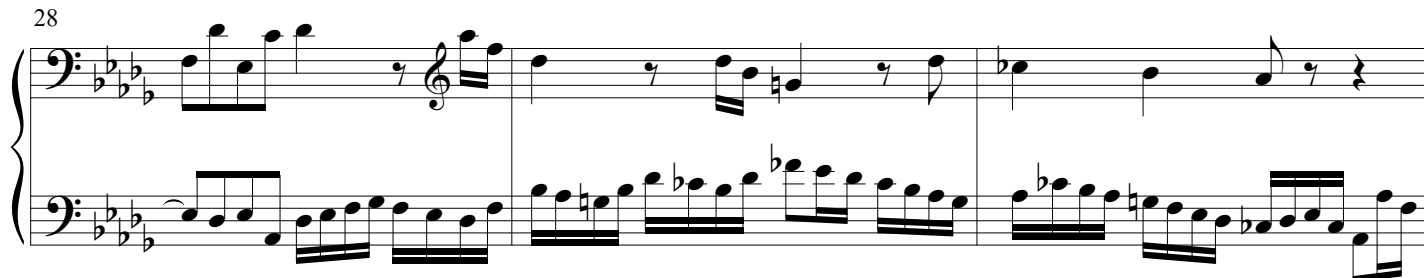
22



25



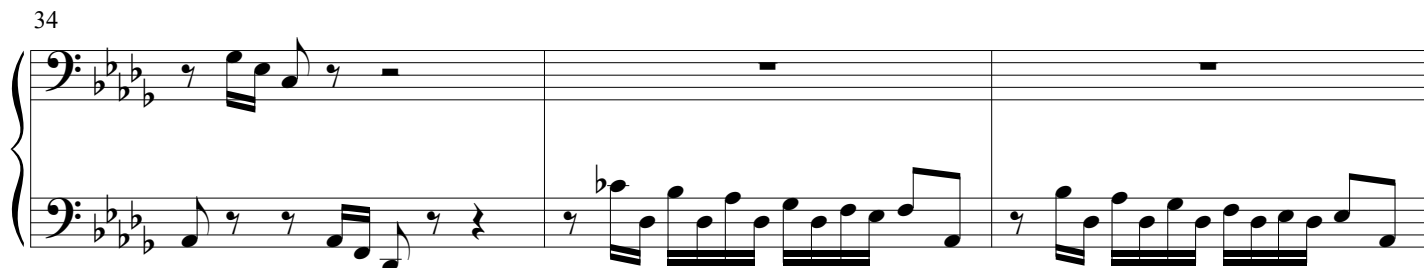
28



31



34



37

Measures 37-39. The bass clef staff has whole rests. The treble clef staff contains a continuous eighth-note melody in E-flat major.

40

Measures 40-42. The bass clef staff has whole rests. The treble clef staff continues the eighth-note melody.

43

Measures 43-45. The bass clef staff has a continuous eighth-note accompaniment. The treble clef staff has a whole rest in measure 43, followed by a melody in measures 44 and 45.

46

Measures 46-48. The bass clef staff has a continuous eighth-note accompaniment. The treble clef staff has a melody with a long note in measure 48.

49

Measures 49-50. The bass clef staff has a continuous eighth-note accompaniment. The treble clef staff has a melody with eighth-note patterns.

51

Measures 51-52. The bass clef staff has a continuous eighth-note accompaniment. The treble clef staff has a melody with a long note in measure 51 and a descending eighth-note line in measure 52.

The image shows a musical score for a piano piece, specifically the third movement of a prelude and fugue. The score is written for two staves, with the upper staff in treble clef and the lower staff in bass clef. The key signature is three flats (B-flat, E-flat, A-flat), and the time signature is 4/4. The music is in a minor key, as indicated by the key signature and the overall mood. The score consists of three measures. The first measure features a complex, fast-moving melody in the upper staff, while the lower staff has a simpler, more rhythmic accompaniment. The second measure continues the melody in the upper staff, with the lower staff providing a steady accompaniment. The third measure concludes the piece with a final chord in the upper staff and a sustained note in the lower staff.