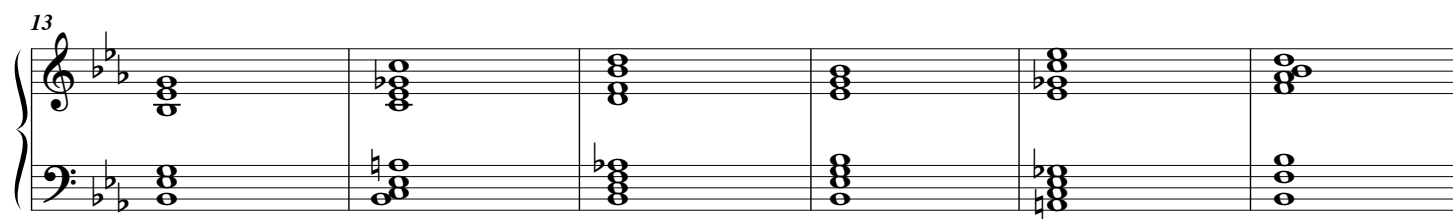
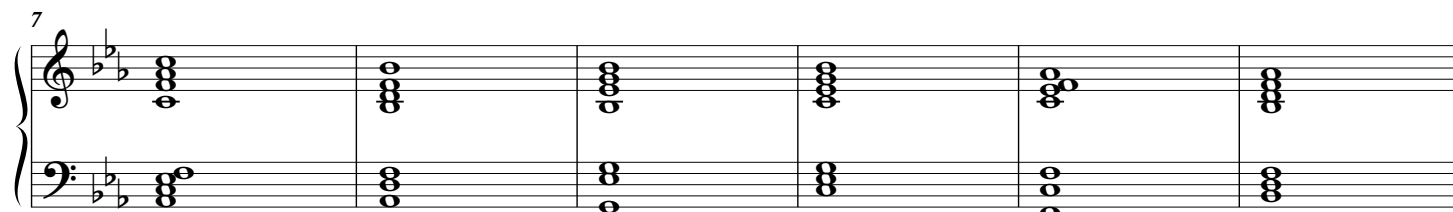
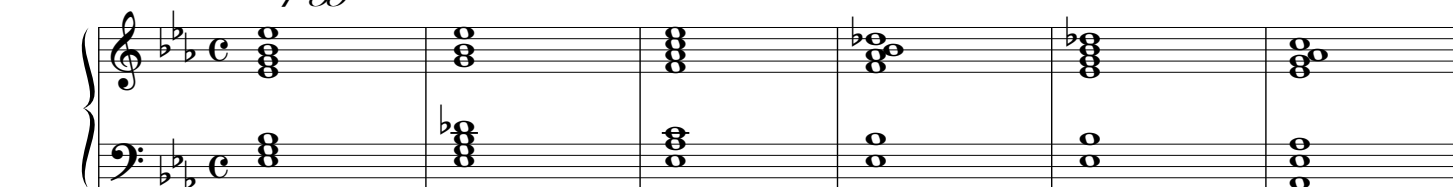


*Præludium*  
*pour la Suite française N° 4*

BWV 815a

*Arpeggio*



22

Measures 22-24 of the first system. The treble clef contains eighth-note patterns and chords, while the bass clef features a steady eighth-note accompaniment.

25

Measures 25-27 of the second system. The treble clef continues with eighth-note patterns, and the bass clef maintains the eighth-note accompaniment.

28

Measures 28-30 of the third system. The treble clef features a melodic line with a slur over measures 28 and 29. The bass clef continues the eighth-note accompaniment.

31

Measures 31-33 of the fourth system. The treble clef has a melodic line with a slur over measures 31 and 32. The bass clef continues the eighth-note accompaniment.

34

*Arpeggio*

Measures 34-37 of the fifth system. The treble clef contains a series of chords, and the bass clef contains a series of chords, indicating an arpeggiated texture.