

## Quintetto

## I. Parade

Beischer-Matyó Tamás

**Allegro** ♩ = 126

*f*

5 **Moderato** ♩ = 92

con sord.

*pp*

14

*pp*

6

**Allegro** ♩ = 126

senza sord.

*f*

27 **Un poco vivace** ♩ = 144

*p*

32

4

39

*f*

43 **Moderato** ♩ = 92

rall.

con sord.

*p*

*ppp*

48 **Allegro** ♩ = 126

senza sord.

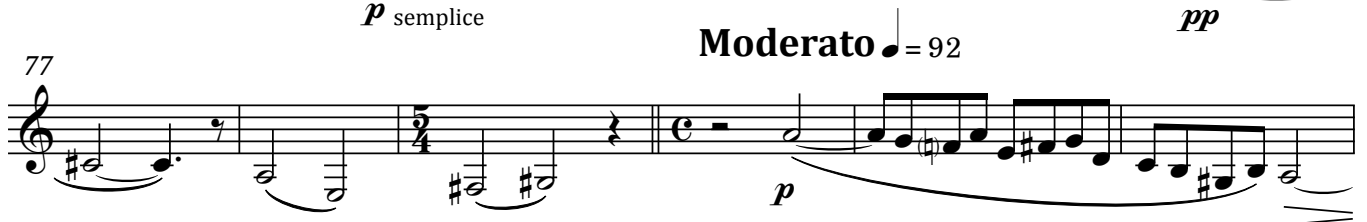
*f*

**Allegretto** ♩ = 108

2

Corno in F

2



II. Intrigue

**Capriccioso** ♩ = 80



20 *pp*

26 *mf*

33

38 *f* *mf*

43 *f*

49 *ff*

55 *appassionato*

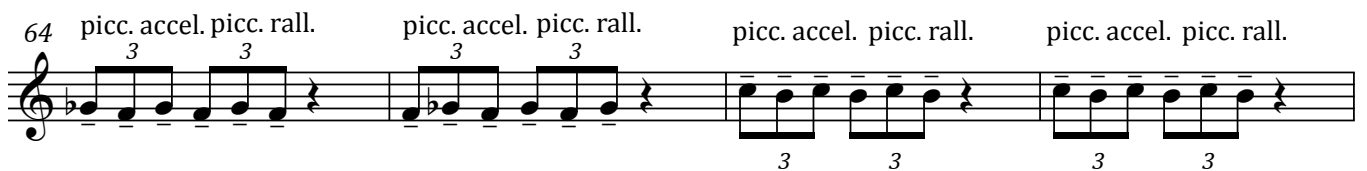
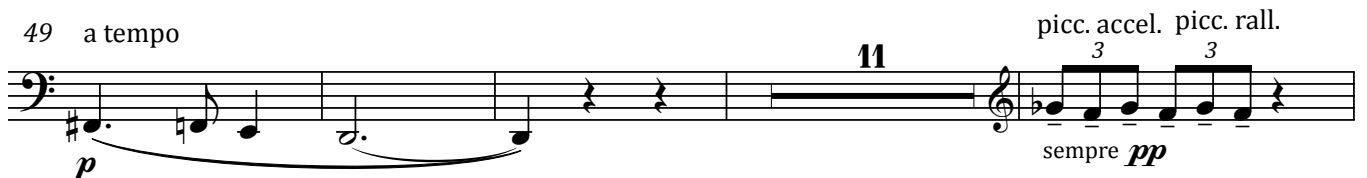
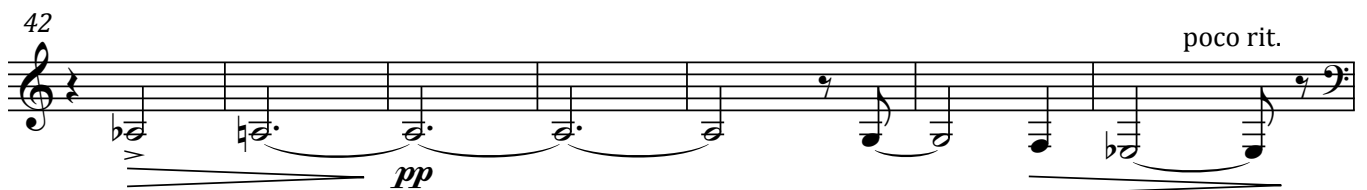
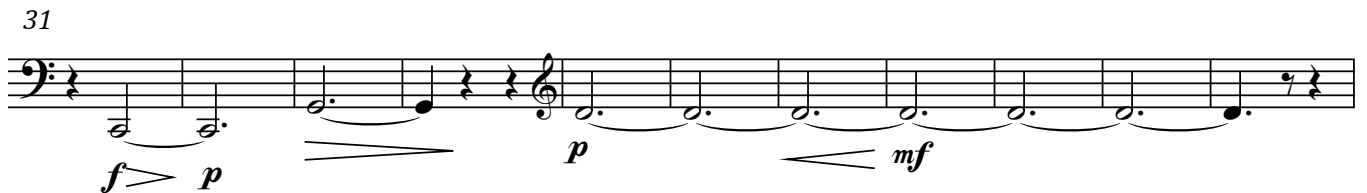
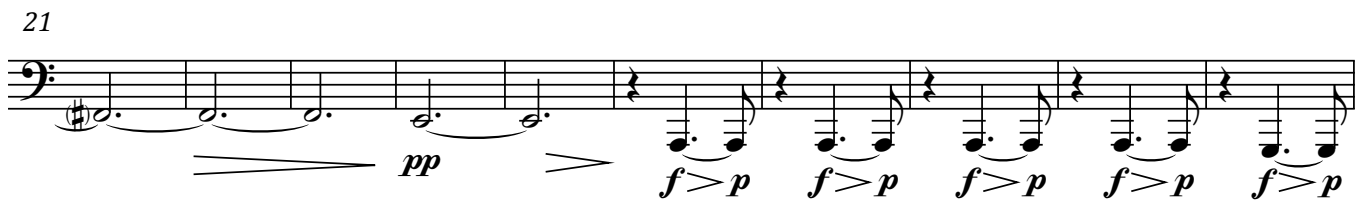
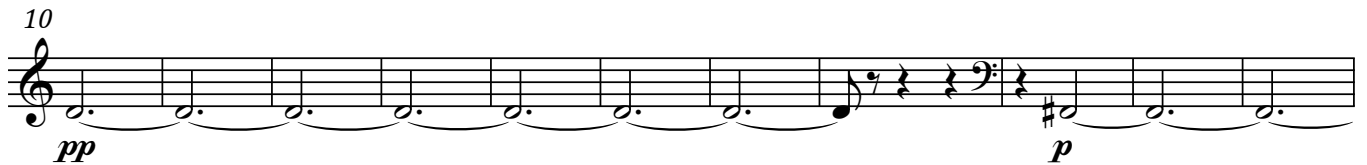
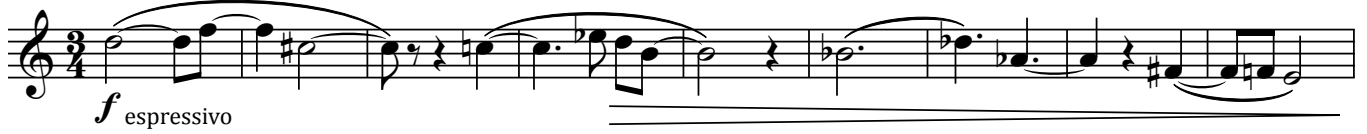
59 rall.----- **Poco sostenuto** ♩ = 66 *f* *p*

66 rall.----- **a tempo** ♩ = 80 *mf* *ff*

71 *espr.*

## III. Dirge

Adagio ♩ = 60



76 **Vivacissimo** ♩ = 144

*ff*

80

83

87

93 **subito a tempo** (♩ = 60)

*fff* > *mf* *mf* > *p* *p* > *ppp*

rall.

103 **a tempo, ma più sost.** ♩ = 52

*ppp* senza espr.

111

*ppp* rigido

7

125

*mf* espr.

rall. poco a poco al fine

*pp*

130 (rall. poco a poco al fine)

*mf* *pppp*

## IV. Heavy

Allegro molto vivace ♩ = 168

7 *ff*

13 *tr* *tr*

17

22

27 *mf*

33 *f* *espr.*

40 *pp* *f* *pp* *f*

47 *ff* *rall.* *a tempo* *pp* *senza espr.*

54

58



62



66



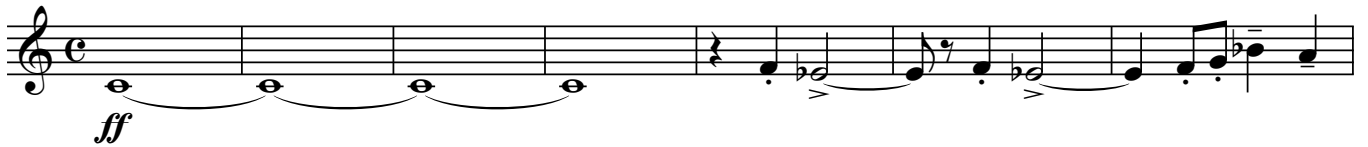
70



76



83



90



96



100



106



## V. Fairy Queen

Allegretto gentile ♩ = 108

11

18

25

33

43

51

63

72

rall. poco a poco al fine - - - - -