

Quintet

I. Parade

Tamás Beischer-Matyó

Allegro ♩ = 126

f

5 **Moderato** ♩ = 92

con sord.

pp

14 **Allegro** ♩ = 126

senza sord.

f

27 **Un poco vivace** ♩ = 144

p

32

4

39

f

43 **Moderato** ♩ = 92

rall.

con sord.

p

ppp

48 **Allegro** ♩ = 126

senza sord.

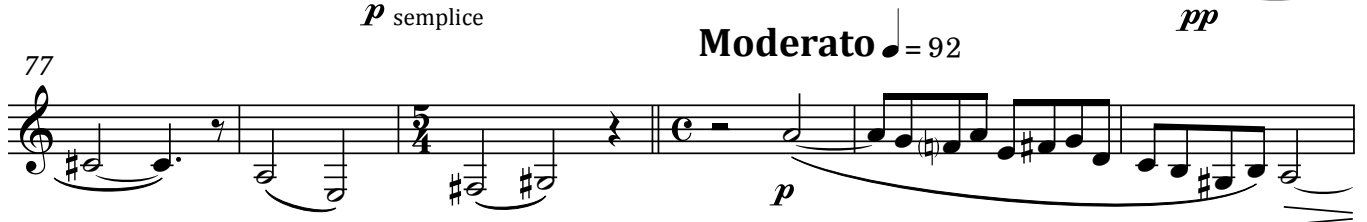
f

Allegretto ♩ = 108

2

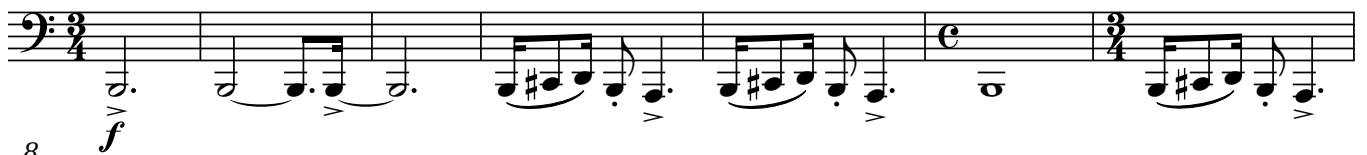
Horn (F)

2



II. Intrigue

Capriccioso ♩ = 80



Horn (F)

3

20 *pp*

26 *mf*

33

38 *f* *mf*

43 *f*

49 *ff*

55 *appassionato*

59 rall.----- **Poco sostenuto** ♩ = 66 *f* *p*

66 rall.----- **a tempo** ♩ = 80 *mf* *ff*

71 *espr.*

The musical score for Horn (F) consists of ten staves of music. The first staff (measures 20-25) is in 3/4 time, featuring a melodic line with a crescendo leading to a piano (*pp*) dynamic. The second staff (measures 26-32) continues the melodic line with a crescendo to a mezzo-forte (*mf*) dynamic. The third staff (measures 33-37) is in 3/4 time, featuring a rhythmic pattern of eighth notes. The fourth staff (measures 38-42) is in 3/4 time, featuring a melodic line with a crescendo to a mezzo-forte (*mf*) dynamic. The fifth staff (measures 43-48) is in 3/4 time, featuring a melodic line with a crescendo to a forte (*f*) dynamic. The sixth staff (measures 49-54) is in 3/4 time, featuring a melodic line with a crescendo to a fortissimo (*ff*) dynamic. The seventh staff (measures 55-58) is in 3/4 time, featuring a melodic line with a crescendo to a fortissimo (*ff*) dynamic. The eighth staff (measures 59-65) is in 3/4 time, featuring a melodic line with a crescendo to a forte (*f*) dynamic, followed by a decrescendo to a piano (*p*) dynamic. The ninth staff (measures 66-70) is in 3/4 time, featuring a melodic line with a crescendo to a fortissimo (*ff*) dynamic. The tenth staff (measures 71-75) is in 3/4 time, featuring a melodic line with a crescendo to a fortissimo (*ff*) dynamic, followed by a decrescendo to a piano (*p*) dynamic.

III. Dirge

Adagio $\text{♩} = 60$

f espressivo

10 *pp* *p*

21 *pp* *f > p* *f > p* *f > p* *f > p* *f > p*

31 *f > p* *p* *mf*

42 *pp* poco rit.

49 a tempo 11 *picc. accel. picc. rall.* *sempre pp*

64 *picc. accel. picc. rall.* *picc. accel. picc. rall.* *picc. accel. picc. rall.* *picc. accel. picc. rall.*

68 *picc. accel. picc. rall.* *picc. accel. picc. rall.* *picc. accel. picc. rall.* *picc. accel. picc. rall.*

72 accel. *pp*

76 **Vivacissimo** ♩ = 144

ff

80

83

87

93 **subito a tempo** (♩ = 60)

fff > *mf* *mf* > *p* *p* > *ppp*

rall.

103 **a tempo, ma più sost.** ♩ = 52

ppp senza espr.

111

ppp rigido

7

125

mf espr.

rall. poco a poco al fine

pp

130 (rall. poco a poco al fine)

mf *pppp*

IV. Heavy

Allegro molto vivace ♩ = 168

7 *ff*

13 *tr* *tr*

17

22

27 *mf*

33 *f* *espr.*

40 *pp* *f* *pp* *f*

47 *ff* *rall.* *a tempo* *pp* *senza espr.*

54

58



62



66



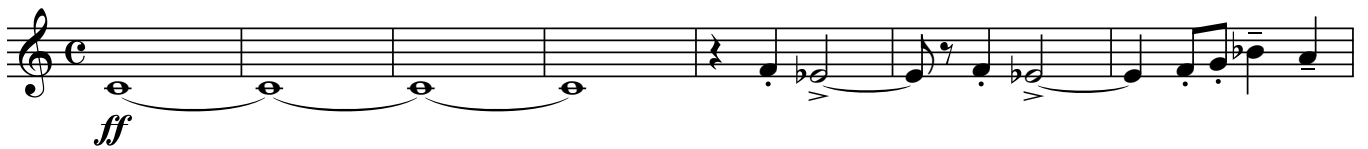
70



76



83



90



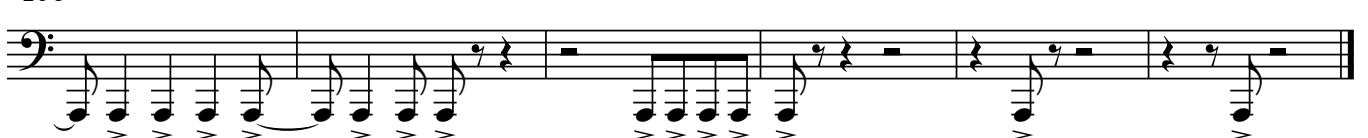
96



100



106



V. Fairy Queen

Allegretto gentile ♩ = 108

11

18

25

33

43

51

63

72

rall. poco a poco al fine - - - - -