

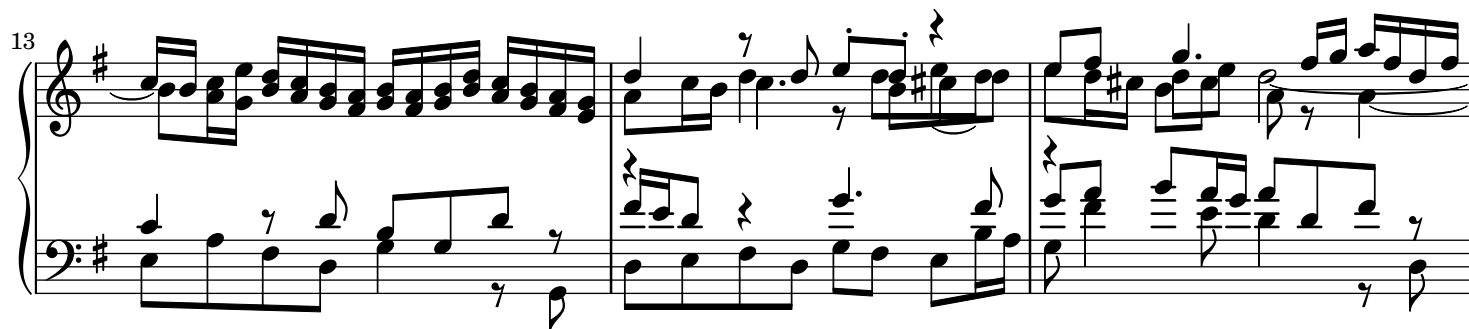
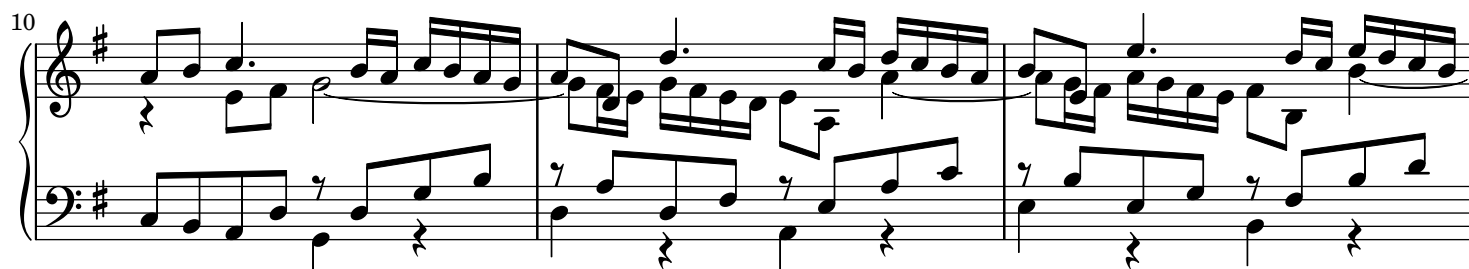
Mass in B minor, BWV 232

Piano Transcription

Johann Sebastian Bach (1749)

Arr. Ruoshi Sun (2021)

15. Et in unum Dominum



16

Measures 16-18 of a piano piece in G major. The right hand features a complex, flowing melody with many sixteenth and thirty-second notes, often beamed together. The left hand provides a steady accompaniment with eighth and sixteenth notes, including some triplets. Measure 18 ends with a whole rest in the right hand.

19

Measures 19-21. The right hand continues its intricate melodic line. In measure 20, there is a half-note chord in the right hand. The left hand maintains a rhythmic accompaniment with eighth notes and some triplet patterns.

22

Measures 22-24. The right hand has a long, sweeping melodic phrase that spans across measures. The left hand continues with a consistent eighth-note accompaniment.

25

Measures 25-27. The right hand features a melodic line with some grace notes and slurs. The left hand's accompaniment includes some triplet eighth notes.

28

Measures 28-30. The right hand has a more active melodic line with many sixteenth notes. The left hand continues with a steady eighth-note accompaniment.

31

Measures 31-33. The right hand has a melodic phrase with a long slur. The left hand continues with a consistent eighth-note accompaniment.

34

Measures 34-36 of a musical score in G major. The treble clef contains a melody with eighth and sixteenth notes, including grace notes and slurs. The bass clef provides a steady accompaniment of eighth notes.

37

Measures 37-39. The treble clef features a more complex melody with slurs and grace notes. The bass clef continues with eighth-note accompaniment.

40

Measures 40-42. The treble clef melody includes slurs and grace notes. The bass clef accompaniment remains consistent with eighth notes.

43

Measures 43-45. The treble clef shows a melodic line with slurs and grace notes. The bass clef accompaniment consists of eighth notes.

46

Measures 46-47. The treble clef features a melodic phrase with slurs and grace notes. The bass clef accompaniment uses eighth notes.

48

Measures 48-50. The treble clef melody includes slurs and grace notes. The bass clef accompaniment consists of eighth notes.

66

Measures 66-68 of a musical score in G major. Measure 66 features a complex treble staff with many beamed sixteenth notes and a bass staff with a simple eighth-note accompaniment. Measure 67 continues the treble staff's complexity while the bass staff remains simple. Measure 68 shows a change in the treble staff with more sustained notes and a more active bass staff.

69

Measures 69-71 of a musical score in G major. Measure 69 has a treble staff with some rests and a bass staff with eighth-note patterns. Measure 70 shows a key signature change to F# minor in both staves. Measure 71 continues in F# minor with a more active bass line.

72

Measures 72-74 of a musical score in F# minor. Measure 72 features a treble staff with many beamed sixteenth notes and a bass staff with eighth-note accompaniment. Measure 73 continues the treble staff's complexity while the bass staff remains simple. Measure 74 shows a change in the treble staff with more sustained notes and a more active bass staff.

75

Measures 75-77 of a musical score in F# minor. Measure 75 has a treble staff with some rests and a bass staff with eighth-note patterns. Measure 76 shows a key signature change to D major in both staves. Measure 77 continues in D major with a more active bass line.

78

Measures 78-80 of a musical score in D major. Measure 78 features a treble staff with many beamed sixteenth notes and a bass staff with eighth-note accompaniment. Measure 79 continues the treble staff's complexity while the bass staff remains simple. Measure 80 shows a change in the treble staff with more sustained notes and a more active bass staff.