

# Praeludium et Fuga IV

**BWV 873**

J. SEBASTIAN BACH

ARR. PETER H. BESSELING

5

8

11

15

18

21

24

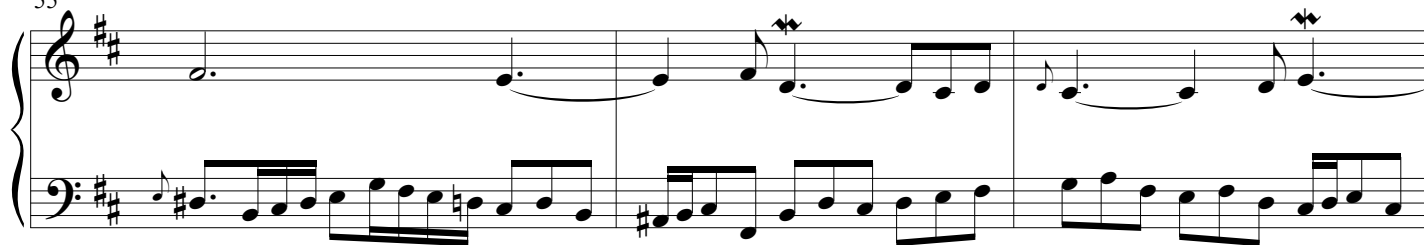
28

31

34

37

55



58



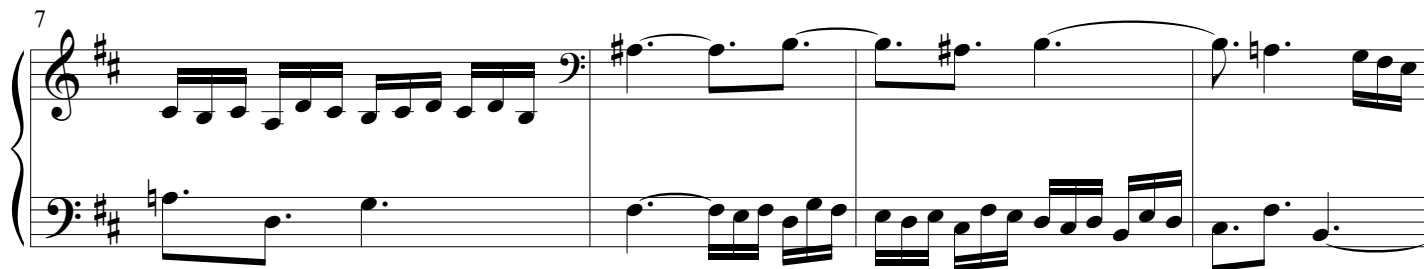
61



3



7



11



## Praeludium et Fuga IV - PIANO II

5

15

A musical score for the song 'The Rose Tree'. The score is written for a piano, with a grand staff consisting of a right-hand staff (treble clef) and a left-hand staff (bass clef). The key signature is one sharp (F#), and the time signature is 3/4. The melody is primarily in the right hand, featuring a series of eighth and sixteenth notes. The left hand provides a harmonic accompaniment with chords and moving lines. The score is divided into three measures, with a repeat sign at the end of the third measure.

18

A musical score for the song 'The Rose Tree'. It features a treble and bass staff. The treble staff has a key signature of two sharps (F# and C#) and a 2/4 time signature. The melody is written in a simple, folk-like style. The bass staff provides a harmonic accompaniment, often using chords and single notes. The score is divided into four measures by vertical bar lines.

22

A musical score for the song 'The Rose Tree'. The score is written for a piano, with a treble and bass staff. The key signature is one sharp (F#), and the time signature is 4/4. The melody is in the treble staff, and the accompaniment is in the bass staff. The melody consists of a series of eighth and quarter notes, with a final quarter note followed by a quarter rest. The accompaniment consists of a series of eighth and quarter notes, with a final quarter note followed by a quarter rest. The score is divided into four measures by vertical bar lines.

26

A musical score for the song "The Rose Tree". The score is written for a piano, with a treble and bass staff. The key signature is one sharp (F#), and the time signature is 4/4. The melody is in the treble staff, and the accompaniment is in the bass staff. The melody consists of a series of eighth and sixteenth notes, with a final note on a half note. The accompaniment consists of a series of eighth and sixteenth notes, with a final note on a half note. The score is divided into four measures, with a repeat sign at the end of the second measure.

30

A musical score for the song 'The Rose Tree'. The score is written for piano (p) and features a treble and bass staff. The key signature is one sharp (F#), and the time signature is 4/4. The melody is in the treble staff, and the accompaniment is in the bass staff. The score consists of four measures. The first measure shows the piano playing a series of eighth notes in the treble and a single eighth note in the bass. The second measure shows the piano playing a series of eighth notes in the treble and a single eighth note in the bass. The third measure shows the piano playing a series of eighth notes in the treble and a single eighth note in the bass. The fourth measure shows the piano playing a series of eighth notes in the treble and a single eighth note in the bass.

34

A musical score for the song 'The Rose Tree'. The score is written for piano and voice. The piano part consists of two staves, both in the bass clef with a key signature of two sharps (F# and C#). The melody is primarily in the right hand, featuring a series of eighth and sixteenth notes. The left hand provides a harmonic accompaniment with longer note values. The voice part is written on a single staff in the treble clef, with a key signature of two sharps. The lyrics 'The Rose Tree' are written below the voice staff. The score is divided into three measures by vertical bar lines.

37

41

45

48

52

55

58

62

65

68