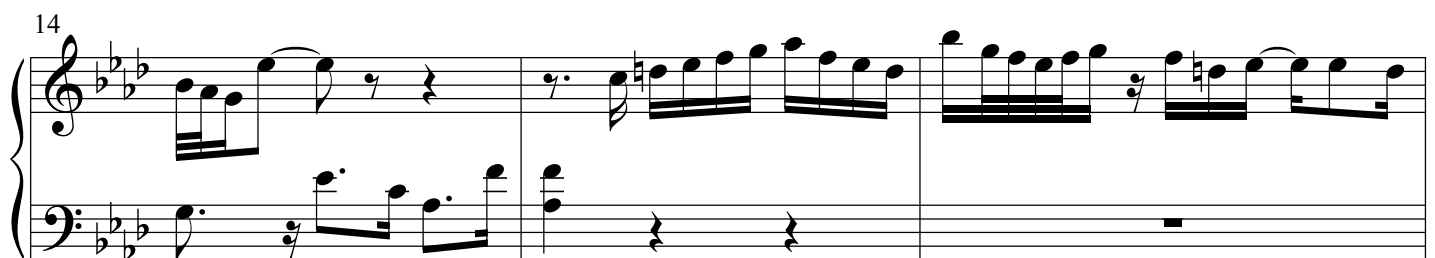
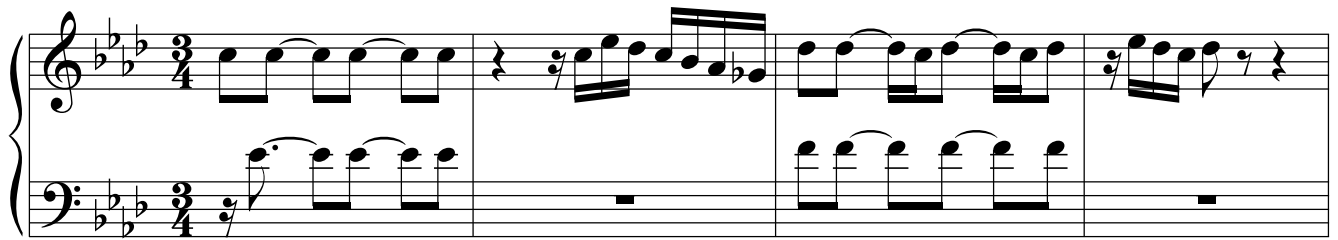


**Praeludium et Fuga XVII**

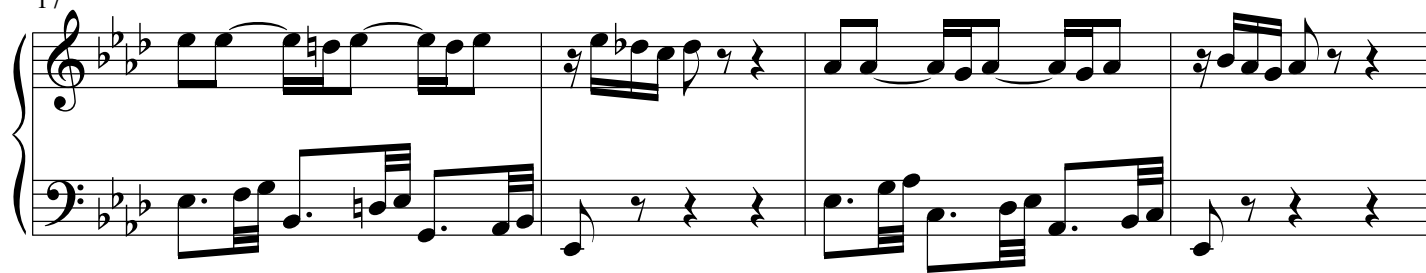
BWV 886

J. SEBASTIAN BACH

PETER H. BESSELING



17



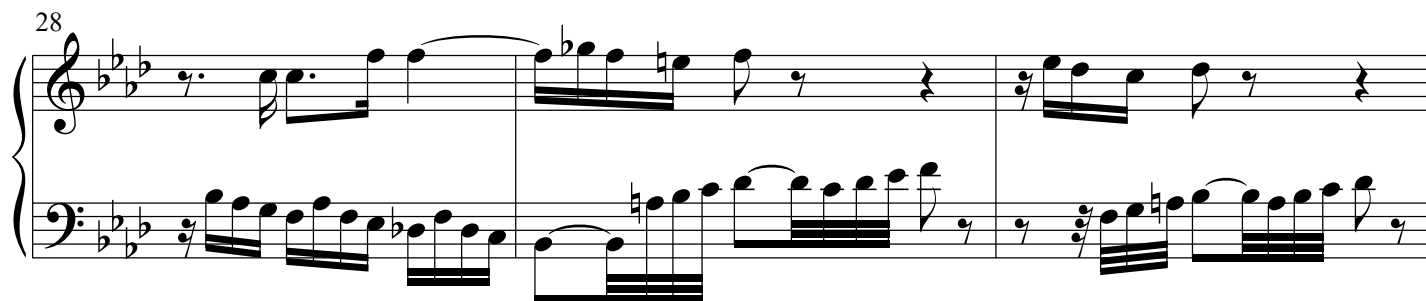
21



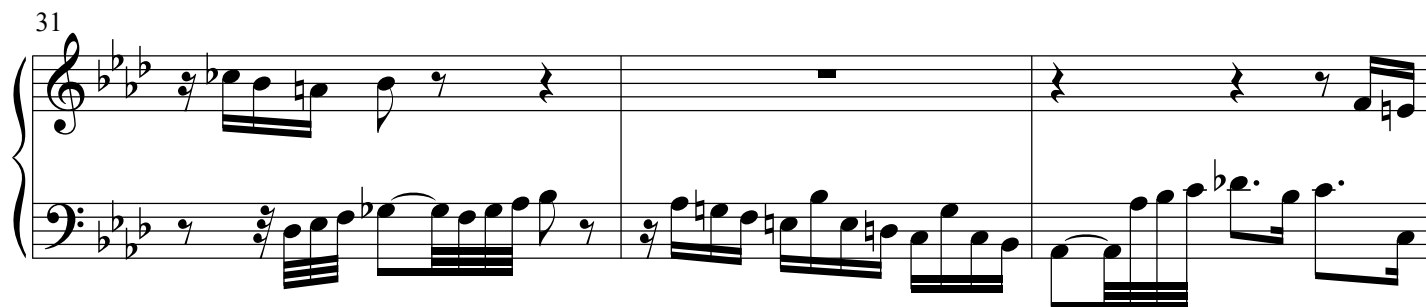
25



28



31



34



38

Measures 38-40. Treble clef: 38 (quarter, eighth, eighth, quarter), 39 (quarter, eighth, eighth, quarter), 40 (quarter, eighth, eighth, quarter). Bass clef: 38 (quarter, eighth, eighth, quarter), 39 (quarter, eighth, eighth, quarter), 40 (quarter, eighth, eighth, quarter).

41

Measures 41-44. Treble clef: 41 (quarter, eighth, eighth, quarter), 42 (quarter, eighth, eighth, quarter), 43 (quarter, eighth, eighth, quarter), 44 (quarter, eighth, eighth, quarter). Bass clef: 41 (quarter, eighth, eighth, quarter), 42 (quarter, eighth, eighth, quarter), 43 (quarter, eighth, eighth, quarter), 44 (quarter, eighth, eighth, quarter).

45

Measures 45-47. Treble clef: 45 (quarter, eighth, eighth, quarter), 46 (quarter, eighth, eighth, quarter), 47 (quarter, eighth, eighth, quarter). Bass clef: 45 (quarter, eighth, eighth, quarter), 46 (quarter, eighth, eighth, quarter), 47 (quarter, eighth, eighth, quarter).

48

Measures 48-51. Treble clef: 48 (quarter, eighth, eighth, quarter), 49 (quarter, eighth, eighth, quarter), 50 (quarter, eighth, eighth, quarter), 51 (quarter, eighth, eighth, quarter). Bass clef: 48 (quarter, eighth, eighth, quarter), 49 (quarter, eighth, eighth, quarter), 50 (quarter, eighth, eighth, quarter), 51 (quarter, eighth, eighth, quarter).

52

Measures 52-54. Treble clef: 52 (quarter, eighth, eighth, quarter), 53 (quarter, eighth, eighth, quarter), 54 (quarter, eighth, eighth, quarter). Bass clef: 52 (quarter, eighth, eighth, quarter), 53 (quarter, eighth, eighth, quarter), 54 (quarter, eighth, eighth, quarter).

55

Measures 55-57. Treble clef: 55 (quarter, eighth, eighth, quarter), 56 (quarter, eighth, eighth, quarter), 57 (quarter, eighth, eighth, quarter). Bass clef: 55 (quarter, eighth, eighth, quarter), 56 (quarter, eighth, eighth, quarter), 57 (quarter, eighth, eighth, quarter).

58

Measures 58-60 of the Praeludium et Fuga XVII. The music is in G major (one sharp) and 3/4 time. Measure 58 features a treble staff with a half note G4, a quarter note A4, and a half note B4, with a descending eighth-note scale in the bass. Measure 59 continues the treble staff with a half note C5, a quarter note D5, and a half note E5, with a descending eighth-note scale in the bass. Measure 60 features a treble staff with a half note F#5, a quarter note G5, and a half note A5, with a descending eighth-note scale in the bass.

61

Measures 61-63 of the Praeludium et Fuga XVII. The music is in G major (one sharp) and 3/4 time. Measure 61 features a treble staff with a half note B4, a quarter note C5, and a half note D5, with a descending eighth-note scale in the bass. Measure 62 continues the treble staff with a half note E5, a quarter note F#5, and a half note G5, with a descending eighth-note scale in the bass. Measure 63 features a treble staff with a half note A5, a quarter note B5, and a half note C6, with a descending eighth-note scale in the bass.

64

Measures 64-66 of the Praeludium et Fuga XVII. The music is in G major (one sharp) and 3/4 time. Measure 64 features a treble staff with a half note D5, a quarter note E5, and a half note F#5, with a descending eighth-note scale in the bass. Measure 65 continues the treble staff with a half note G5, a quarter note A5, and a half note B5, with a descending eighth-note scale in the bass. Measure 66 features a treble staff with a half note C6, a quarter note B5, and a half note A5, with a descending eighth-note scale in the bass.

67

Measures 67-68 of the Praeludium et Fuga XVII. The music is in G major (one sharp) and 3/4 time. Measure 67 features a treble staff with a half note G5, a quarter note A5, and a half note B5, with a descending eighth-note scale in the bass. Measure 68 features a treble staff with a half note C6, a quarter note B5, and a half note A5, with a descending eighth-note scale in the bass.

69

Measures 69-71 of the Praeludium et Fuga XVII. The music is in G major (one sharp) and 3/4 time. Measure 69 features a treble staff with a half note G5, a quarter note A5, and a half note B5, with a descending eighth-note scale in the bass. Measure 70 continues the treble staff with a half note C6, a quarter note B5, and a half note A5, with a descending eighth-note scale in the bass. Measure 71 features a treble staff with a half note G5, a quarter note F#5, and a half note E5, with a descending eighth-note scale in the bass.

72

Measures 72-74 of the Praeludium et Fuga XVII. The music is in G major (one sharp) and 3/4 time. Measure 72 features a treble staff with a half note D5, a quarter note E5, and a half note F#5, with a descending eighth-note scale in the bass. Measure 73 continues the treble staff with a half note G5, a quarter note A5, and a half note B5, with a descending eighth-note scale in the bass. Measure 74 features a treble staff with a half note C6, a quarter note B5, and a half note A5, with a descending eighth-note scale in the bass.

75

**Fuga**

5

8

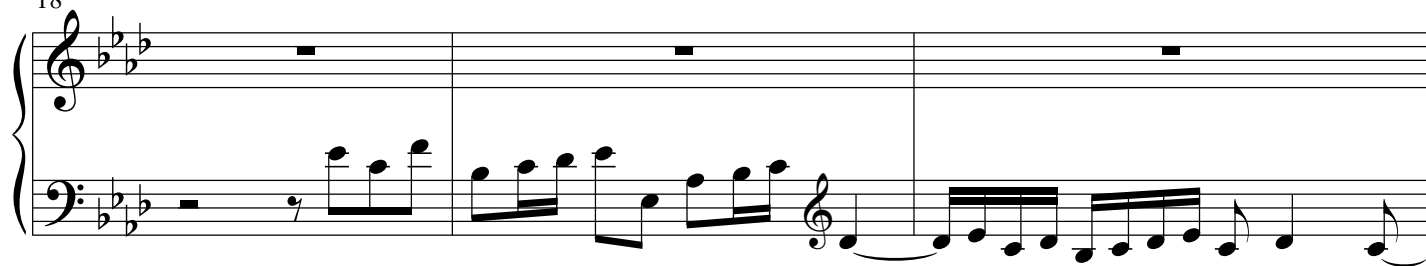
11

14

6

## Praeludium et Fuga XVII - PIANO I

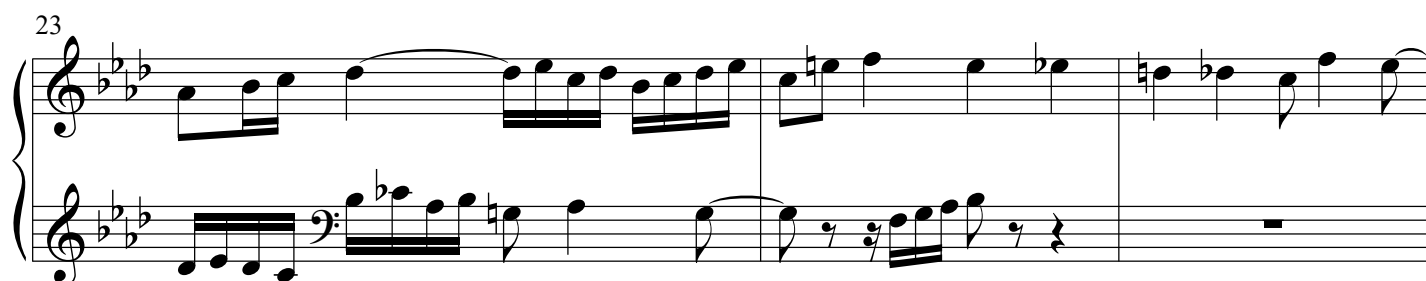
18



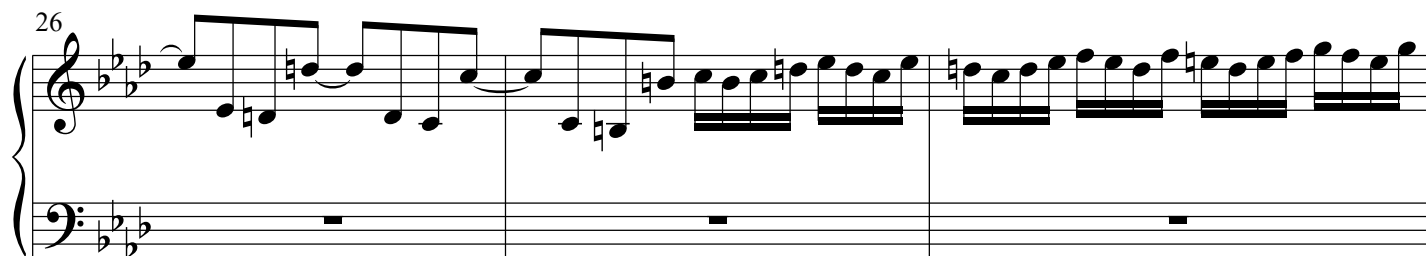
21



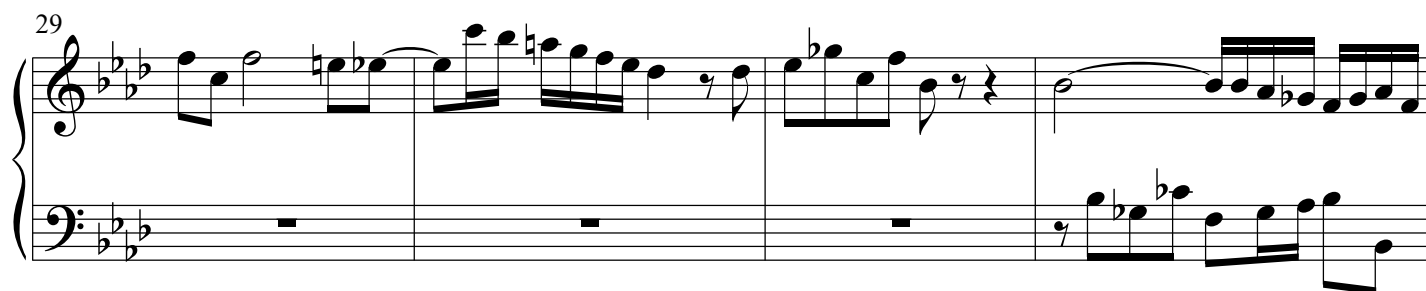
23



26



29



33



35

37

40

42

45

48