

Alto

Missa Solemnis

in honorem

Sancti Michaelis Archangeli

Jorge Braun (- 1957)

Moderato

Kyrie



p Ky - ri - e e - le - i - son, Ky - ri - e e -
mf cresc.

6

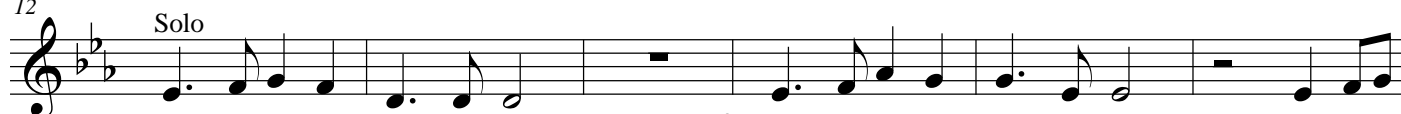


le - i - son e - le *dim.* i - son, e - le - i - son.
p

rit.

Andantino

12



p Chris - te e - le - i - son, *mf* Chris - te e - le - i - son, Chris -
cresc.

18



te e - le - i - son Chris - te, Chris - te e - le - i - son.
dim.

rit.

Con moto

2

25



mf Ky - ri - e e - le - i - son, Ky - ri - e e - le - i - son e -
f cresc.

Tutti

30



lei - son Ky - ri - e e - le *dim.* i - son, Ky - ri - e e - le - i - son.
mf p pp

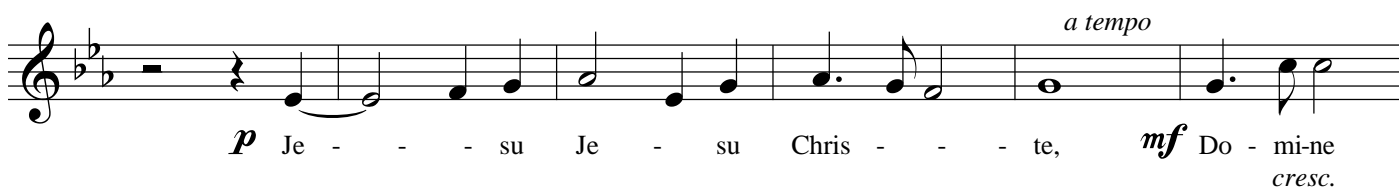
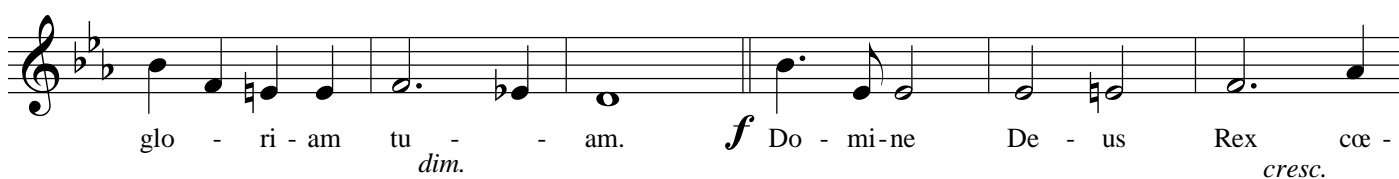
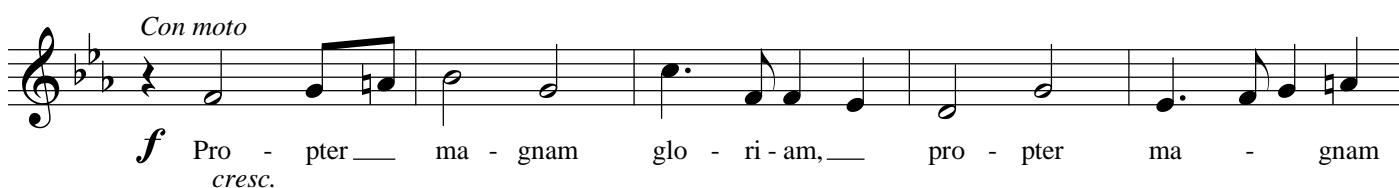
a tempo

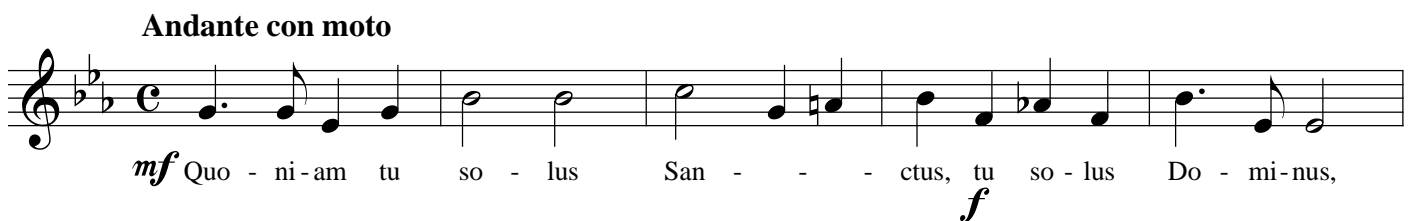
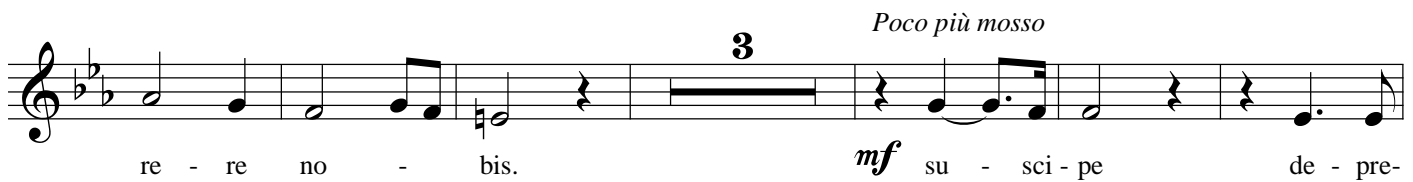
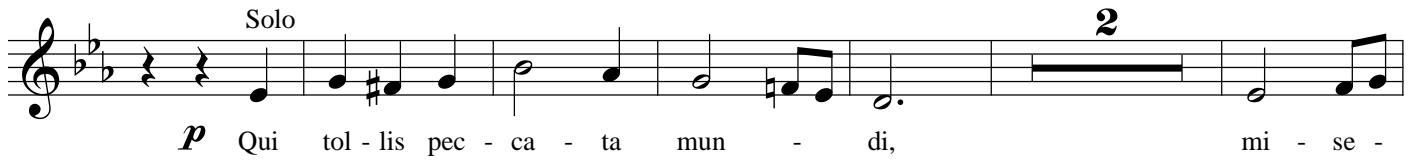
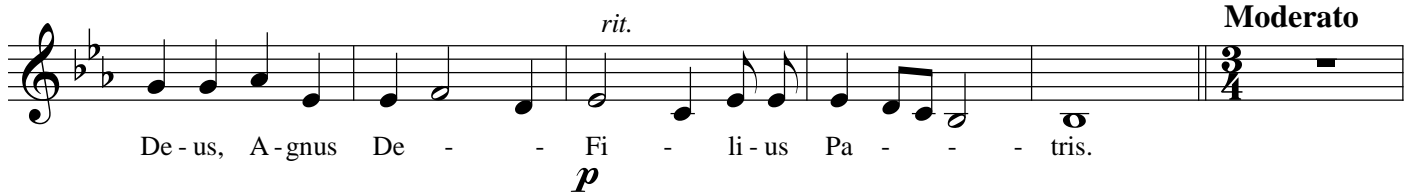
rit.

Alto

Andante con moto

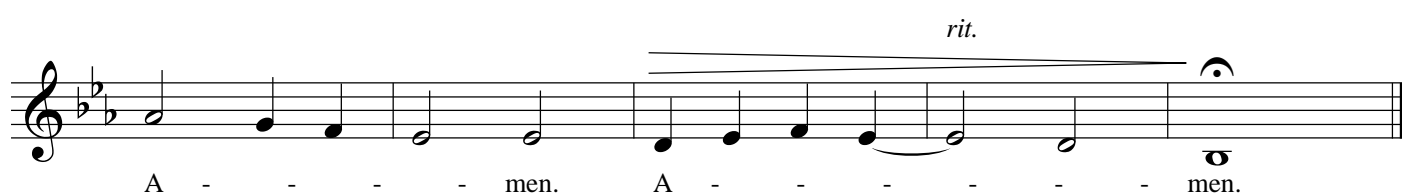
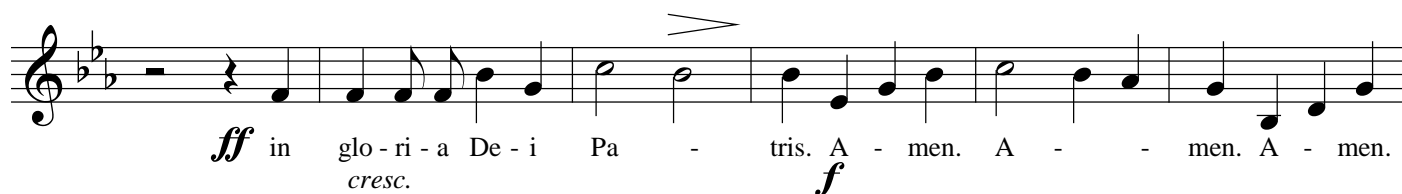
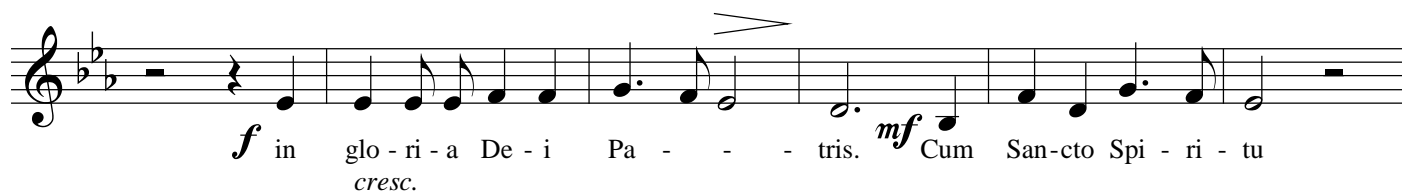
Gloria





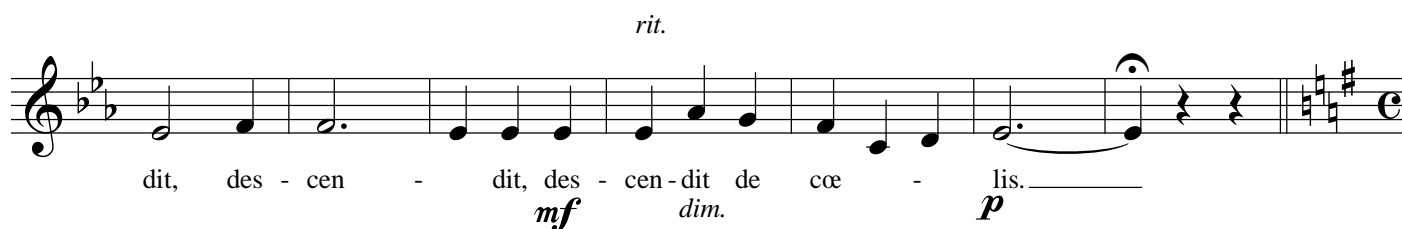
Missa Solemnis in honorem Sancti Michælis Archangeli

Alto

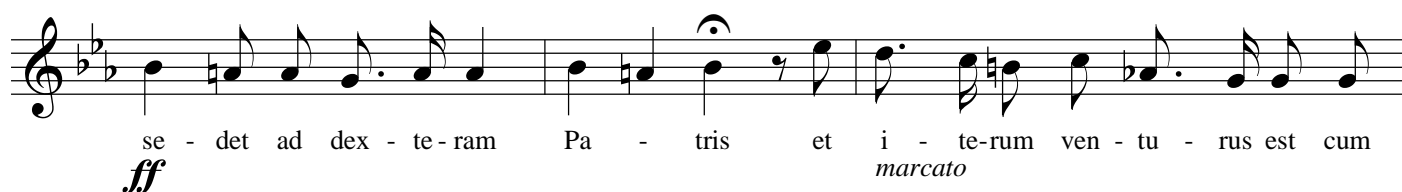
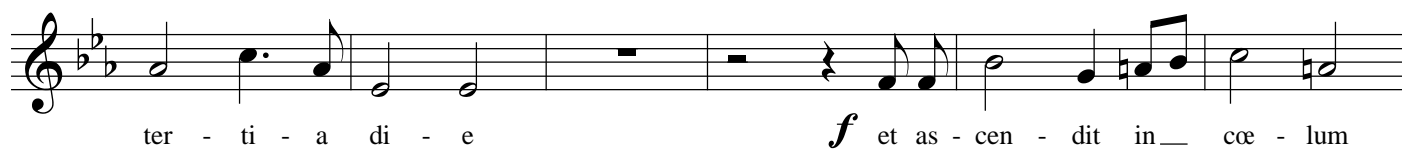
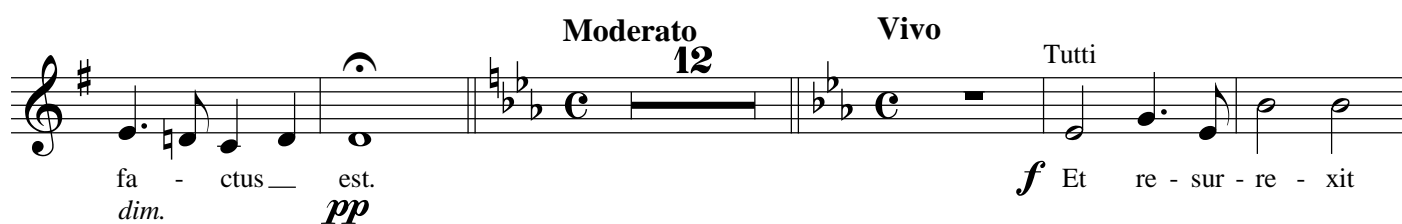
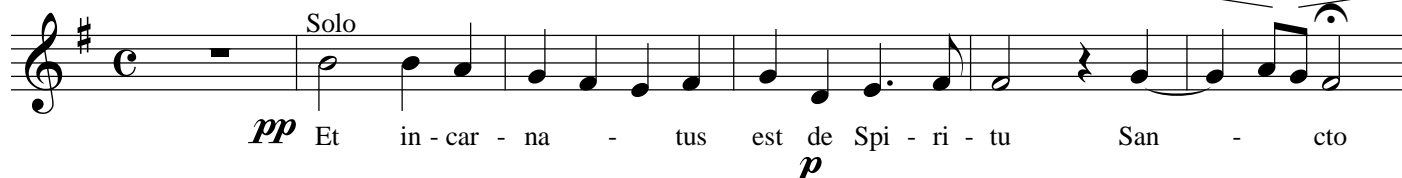


Moderato assai





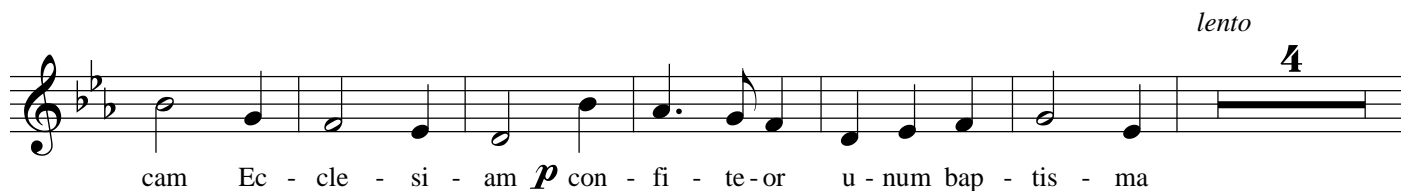
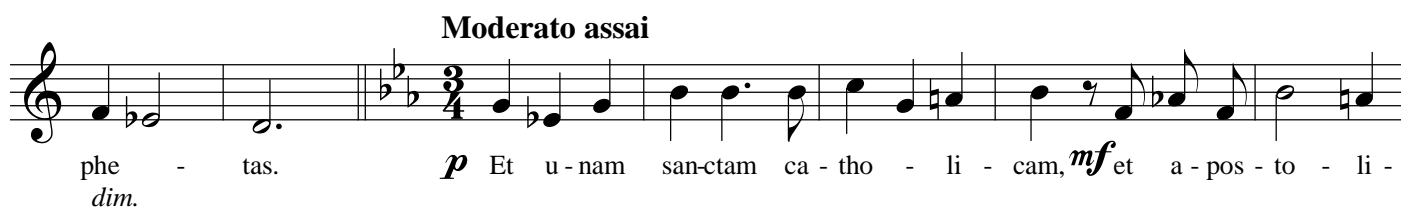
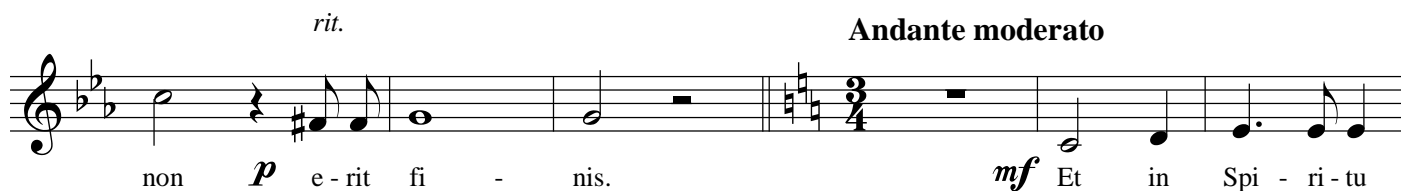
Adagio espressivo



Missa Solemnis in honorem Sancti Michaelis Archangeli

6

Alto



Missa Solemnis in honorem Sancti Michaelis Archangeli

Alto

rit. **Andante religioso**

Solo

f ho - san - na in ex - cel - sis, in ex - cel - sis. ***p*** Be - ne -

cresc. *dim.*

di - ctus qui ve - nit in no - mi - ne Do - mi - ni,

mf Be - ne - di - ctus qui ve - nit in no - mi - ne Do - mi - ni, qui

animato **Tutti**

ve - nit in no - mi - ne Do - mi - ni. ***mf*** Ho - san - na in ex -

dim.

cel - sis, ***f*** ho - san - na in ex - cel - sis, ***p*** ho - san - na, ***mf*** ho - san - na,

rit.

f ho - san - na in ex - cel - sis, in ex - cel - sis.

cresc. *dim.*

11

