

Englischhorn
(ad lib.)

Ouverture (Suite) No. 1

J. J. Bach
BWV 1046

$\text{♩} = 80$

Ouverture

7

13 $\text{♩} = 110$

20 *tr*

24 4

33

37

40 5

49

53 16

73 2

80 *tr*

Englischhorn (ad lib.)

84

87

93

97

101

106

111



This musical score for English Horn (ad lib.) consists of six staves of music. The key signature is one sharp (F#). The first staff (84) features a series of eighth and sixteenth notes. The second staff (87) includes a measure with a fermata and a second ending bracket. The third staff (93) continues the melodic line. The fourth staff (97) has a tempo marking of J = 80. The fifth staff (101) shows a change in rhythm with dotted notes. The sixth staff (106) ends with a double bar line and a second ending bracket. The seventh staff (111) begins with a tempo marking of J = 110 and ends with a double bar line and a fermata.

Courante

6

12

18

23



This musical score for Courante consists of four staves of music. The key signature is one sharp (F#) and the time signature is 3/2. The first staff (6) begins with a treble clef and a key signature of one sharp. The second staff (12) continues the melody. The third staff (18) features a key signature change to two sharps (F# and C#). The fourth staff (23) ends with a double bar line and a fermata.

Englischhorn (ad lib.)

Gavotte 1



9



18

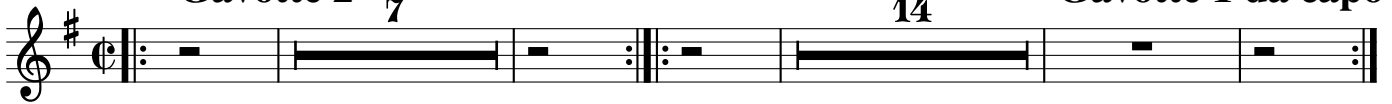


Gavotte 2

7

14

Gavotte 1 da capo



Forlane



6



11



15



20



Englischhorn (ad lib.)

Menuett 1

1. 2.

17

1. 2.

Menuett 2

Menuett 1 da capo

8 14 2

Bourrée 1

9

17

Bourrée 2

Bourrée 1 da capo

7 14

Passepied 1

11

21

1. 2.

Passepied 2

Passepied 1 da capo

7 19

1. 2.