

Cello

Toccata and Fugue in D minor

BWV 565

Note: A parenthesized note(s)
of a chord is optional
and omissible.

Johann Sebastian Bach (disputed)

Transcribed for Cello by Varun Soontornniyomkij

Adagio ♩ = 80

Largo ♩ = 30

Andante ♩ = 70

Lento ♩ = 50

Andante ♩ = 60

5

9

11

13

14

16

17

ff

pp

tr

V

V.S.

18



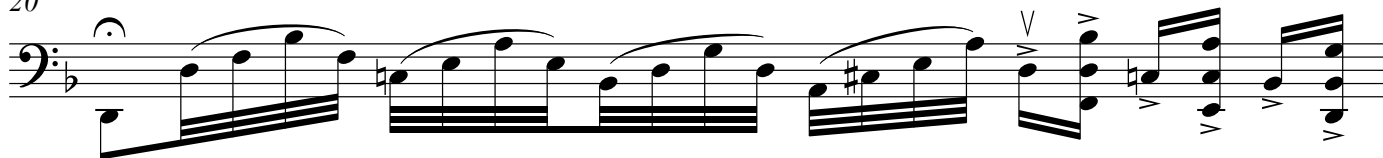
19



Andante ♩ = 50

Largo ♩ = 25

20



21



Andante ♩ = 50

Largo ♩ = 25

Andante ♩ = 50

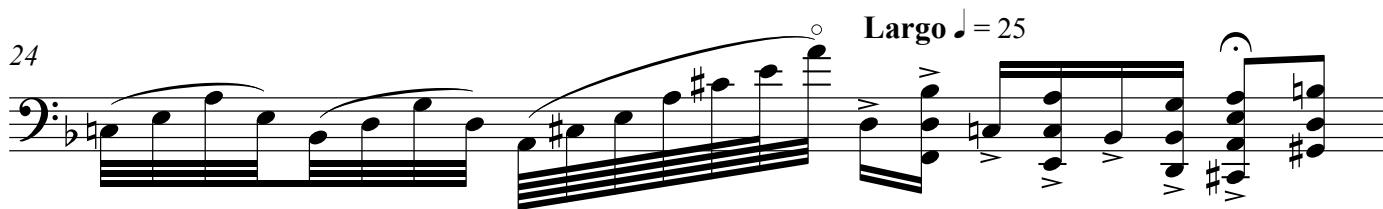
23



Largo ♩ = 25

Andante ♩ = 50

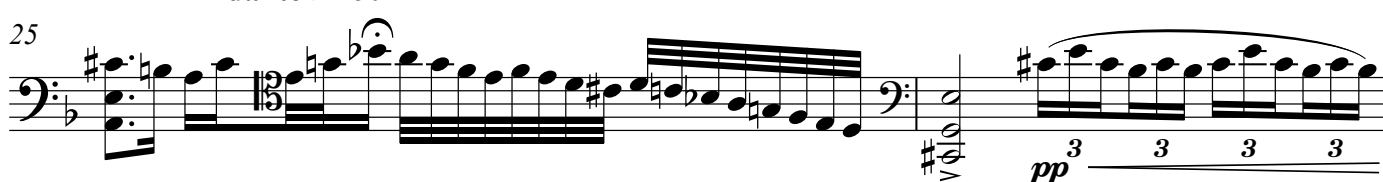
24



Largo ♩ = 25

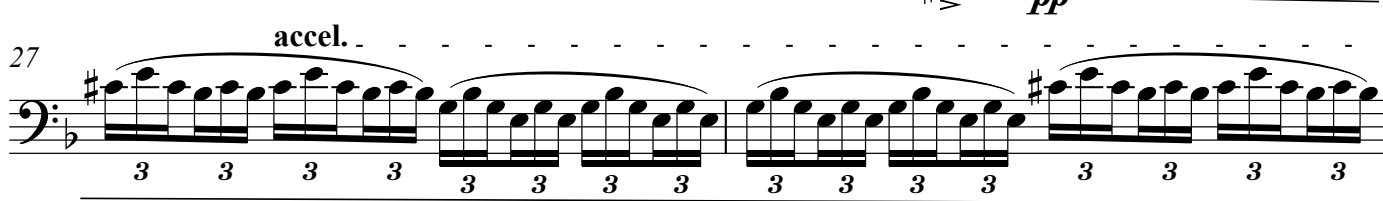
Andante ♩ = 50

25



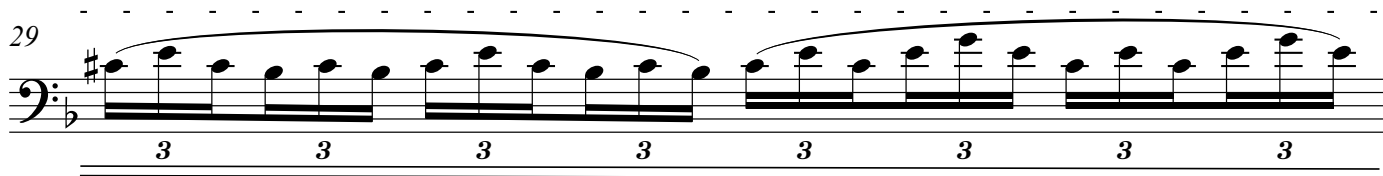
pp

27



accel.

29



30

3 3 3 3

Allegro ♩ = 100 Lento ♩ = 30

ff 3 3 3 3

Allegro non troppo ♩ = 80
Fugue

f

36

36

38

38

40

40

43

43

45

45

Cello

48

50

52

54

56

58

61

63

65

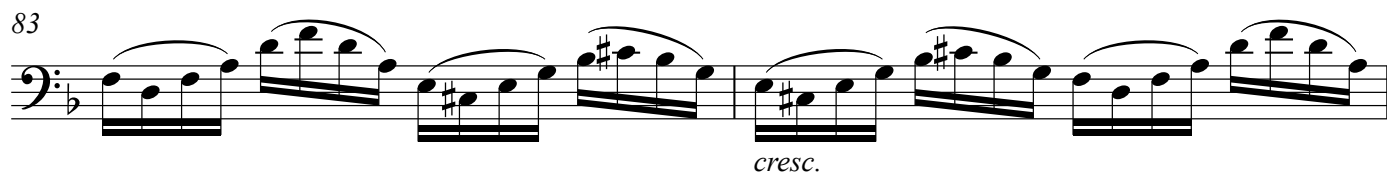
67

mf

f

p

This musical score for Cello consists of nine staves of music, numbered 48 through 67. The music is written in bass clef with a key signature of one flat (B-flat). The notation includes various rhythmic values such as eighth, sixteenth, and thirty-second notes, as well as rests and accidentals. Dynamic markings are present: *mf* (mezzo-forte) at measure 61, *f* (forte) at measure 63, and *p* (piano) at measure 67. The score shows a progression of musical ideas, including melodic lines and dense chordal textures.



90

92

94

96

99

102

104

106

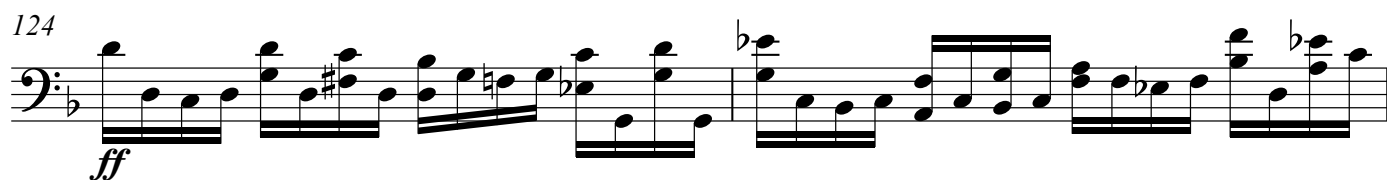
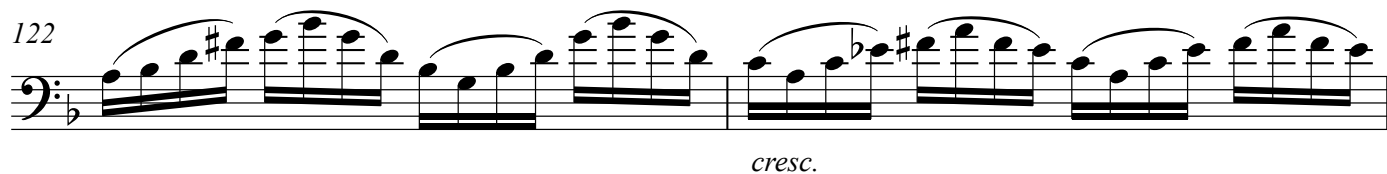
108

111

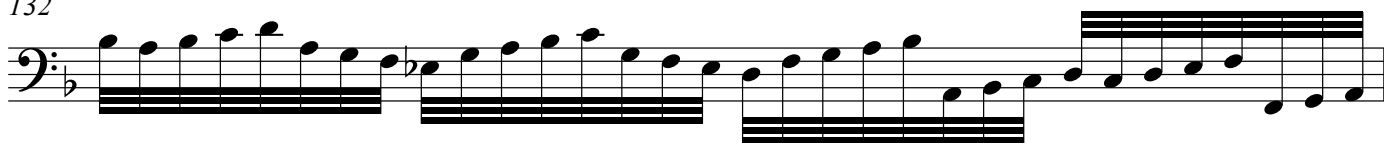
mf

f

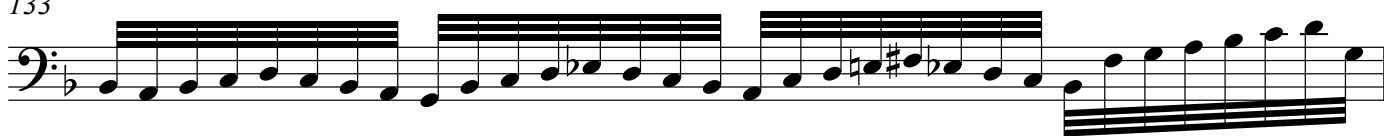
This musical score for Cello spans measures 90 to 111. The key signature has one flat (B-flat), and the time signature is 4/4. The notation is written on a single bass staff. Measures 90-91 feature a melodic line with a slur and a sharp sign. Measures 92-93 show a steady eighth-note pattern. Measures 94-95 continue this pattern with some chromatic movement. Measures 96-98 show a more complex rhythmic pattern with sixteenth notes. Measure 99 features a dynamic marking of *mf* and a complex rhythmic pattern. Measures 100-101 show a steady eighth-note pattern. Measures 102-103 show a steady eighth-note pattern. Measures 104-105 show a steady eighth-note pattern. Measures 106-107 show a steady eighth-note pattern. Measures 108-109 show a steady eighth-note pattern. Measures 110-111 show a steady eighth-note pattern, with a dynamic marking of *f* at the end.



132



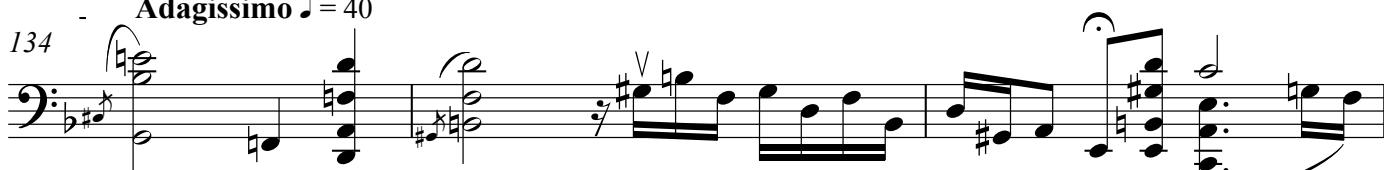
133



rit. - - - - -

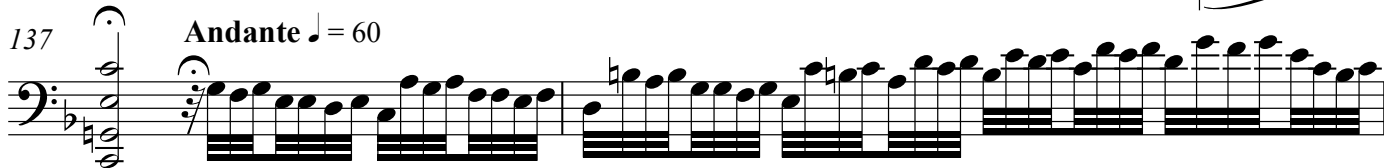
Adagissimo ♩ = 40

134

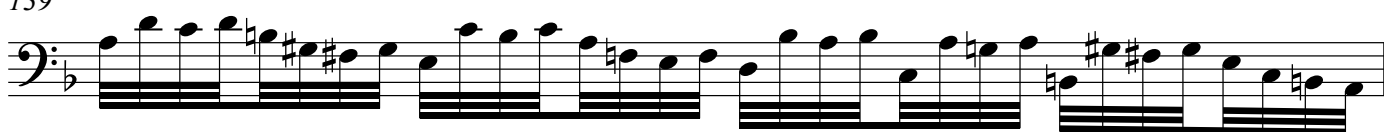


137

Andante ♩ = 60



139

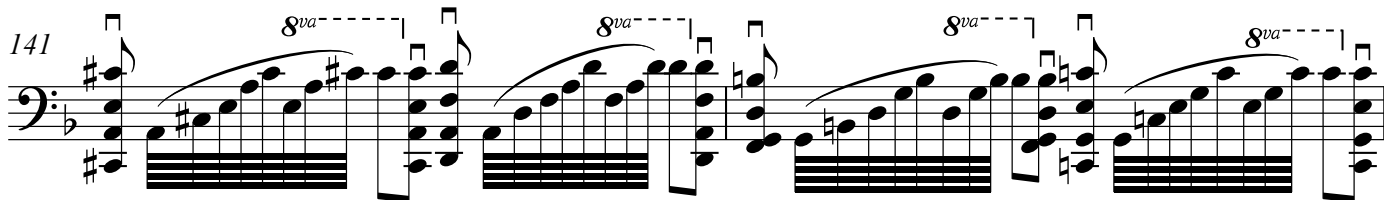


140

Lento ♩ = 35



141



143

