

Cello

Transcribed for Cello by
Varun Soontornniyomkij

Toccata and Fugue in D minor

BWV 565

Johann Sebastian Bach (disputed)

Adagio ♩ = 80

ff

5

Largo ♩ = 30

pp

9 **Andante** ♩ = 70

11

13

Lento ♩ = 50

14

ff

16 **Andante** ♩ = 60

17

V.S.

18



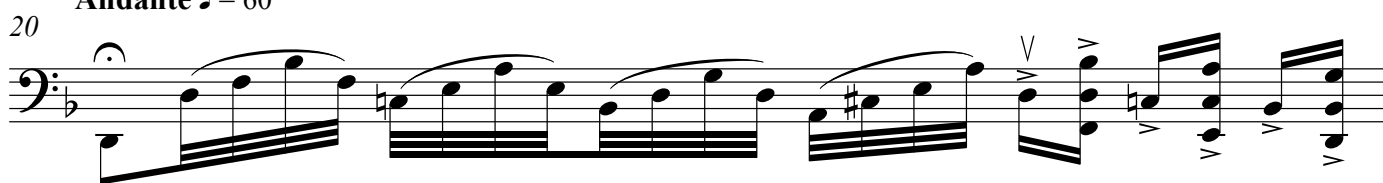
19



Andante ♩ = 60

Largo ♩ = 25

20



Andante ♩ = 60

Largo ♩ = 25

Andante ♩ = 60

21



Largo ♩ = 25

Andante ♩ = 60

23



24



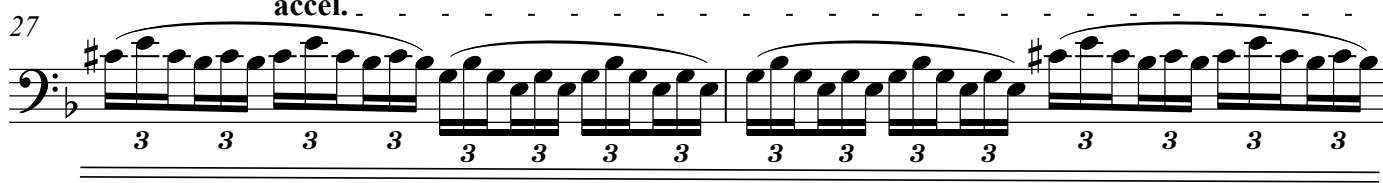
Andante ♩ = 50

25



accel. - - - - -

27



29



30

3 3 3 3

Allegro ♩ = 100 Lento ♩ = 30

ff 3 3 3 3

Allegro non troppo ♩ = 80
Fugue

f

36

36

38

38

40

40

43

43

45

45

48

50

52

54

56

58

61

63

65

67

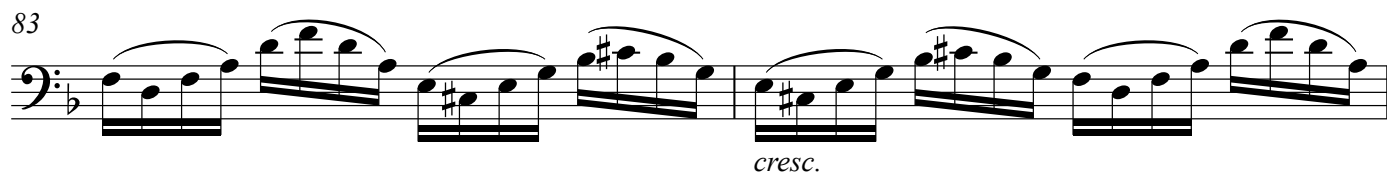
mf

f

p

The musical score for Cello, measures 48-67, is written in bass clef with a key signature of one flat (B-flat). The notation includes eighth notes, sixteenth notes, and chords. Dynamic markings include *mf* (measures 61-62), *f* (measure 63), and *p* (measure 67). Some notes are enclosed in parentheses, indicating they are optional. The score is divided into measures 48-49, 50-51, 52-53, 54-55, 56-57, 58-59, 60-61, 62-63, 64-65, and 66-67.

Note: If a note of a chord is in parentheses, then that note is optional and omissible from performance.



90

92

94

96

99

102

104

106

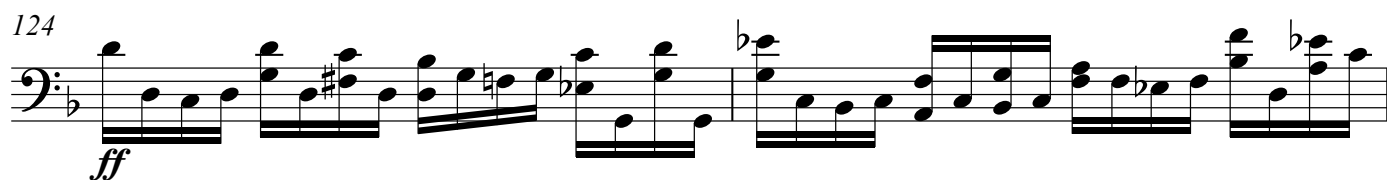
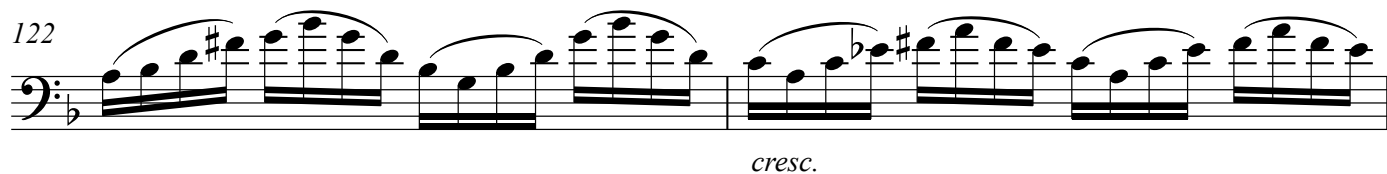
108

111

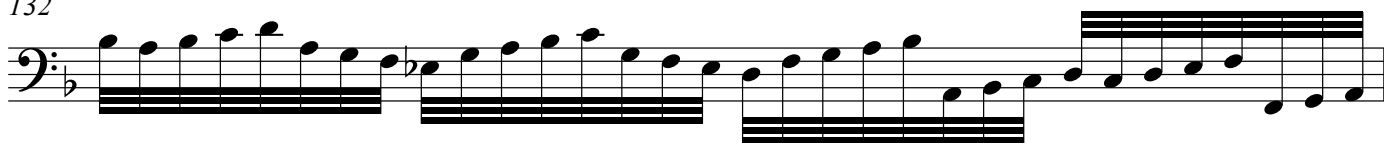
mf

f

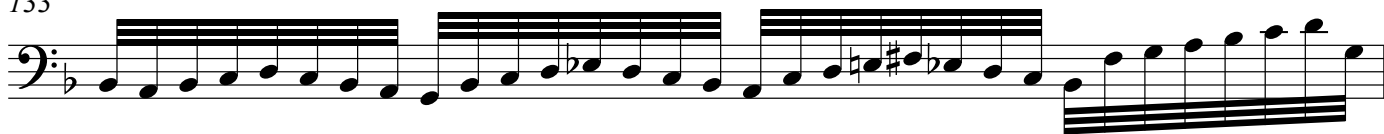
This musical score for Cello spans measures 90 to 111. The key signature has one flat (B-flat). The notation is as follows:
- Measure 90: Starts with a slur over a triplet of eighth notes (B-flat, A, G) followed by a half note (F#).
- Measure 92: Consists of eighth-note pairs: (B-flat, A), (G, F), (E, D), (C, B-flat), (A, G), (F, E), (D, C), (B-flat, A).
- Measure 94: Consists of eighth-note pairs: (B-flat, A), (G, F), (E, D), (C, B-flat), (A, G), (F, E), (D, C), (B-flat, A).
- Measure 96: Consists of eighth-note pairs: (B-flat, A), (G, F), (E, D), (C, B-flat), (A, G), (F, E), (D, C), (B-flat, A).
- Measure 99: Consists of eighth-note pairs: (B-flat, A), (G, F), (E, D), (C, B-flat), (A, G), (F, E), (D, C), (B-flat, A).
- Measure 102: Consists of eighth-note pairs: (B-flat, A), (G, F), (E, D), (C, B-flat), (A, G), (F, E), (D, C), (B-flat, A).
- Measure 104: Consists of eighth-note pairs: (B-flat, A), (G, F), (E, D), (C, B-flat), (A, G), (F, E), (D, C), (B-flat, A).
- Measure 106: Consists of eighth-note pairs: (B-flat, A), (G, F), (E, D), (C, B-flat), (A, G), (F, E), (D, C), (B-flat, A).
- Measure 108: Consists of eighth-note pairs: (B-flat, A), (G, F), (E, D), (C, B-flat), (A, G), (F, E), (D, C), (B-flat, A).
- Measure 111: Consists of eighth-note pairs: (B-flat, A), (G, F), (E, D), (C, B-flat), (A, G), (F, E), (D, C), (B-flat, A).
Dynamics: *mf* (mezzo-forte) is marked below measure 96. *f* (forte) is marked below measure 111, preceded by a double line.



132



133



rit.

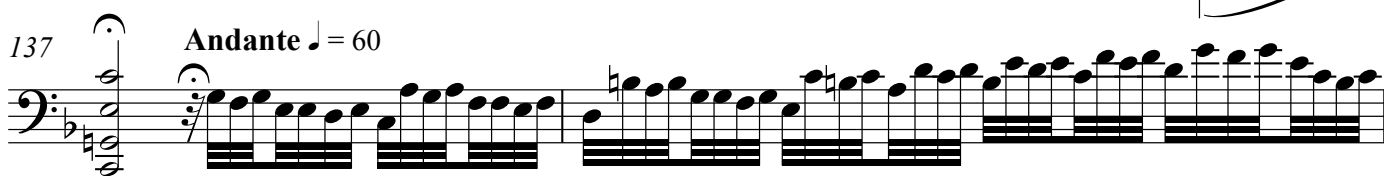
Adagissimo ♩ = 40

134



137

Andante ♩ = 60



139

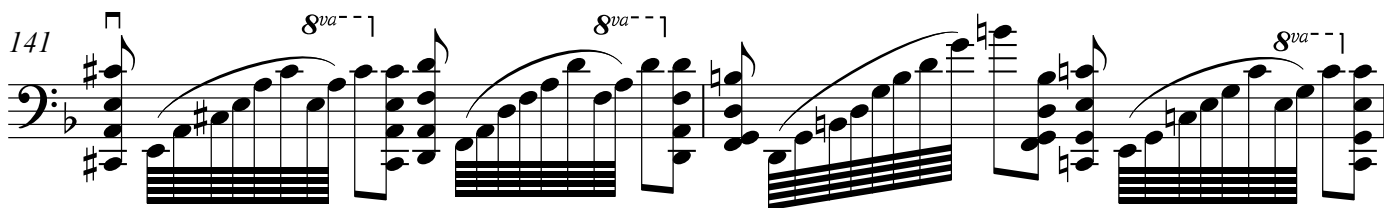


140

Lento ♩ = 35



141



143

