

Cello

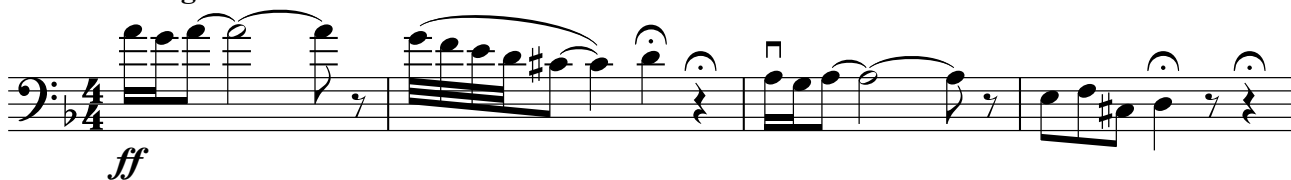
Transcribed for Cello by
Varun Soontornniyomkij

Toccata and Fugue in D minor

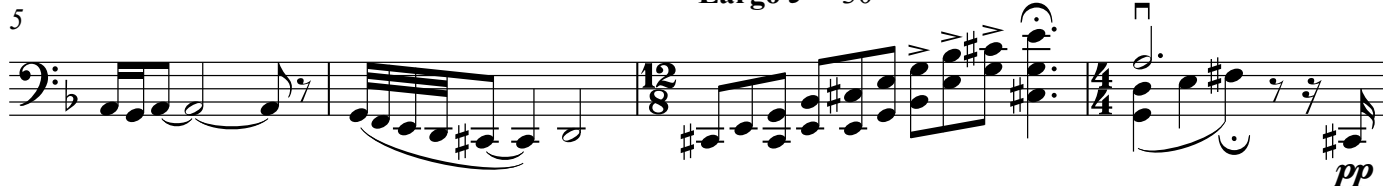
BWV 565

Johann Sebastian Bach (disputed)

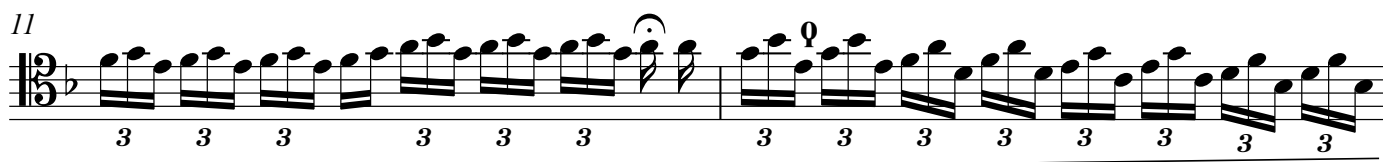
Adagio ♩ = 80



Largo ♩ = 30



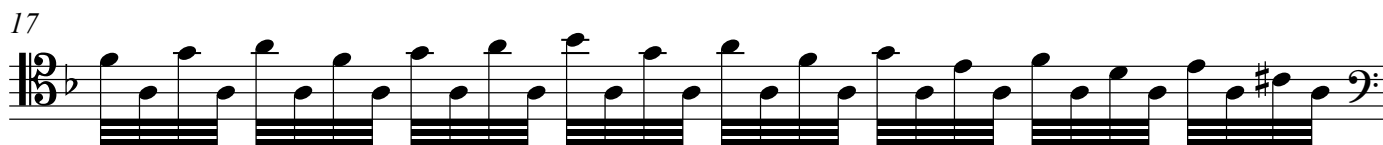
Andante ♩ = 70



Lento ♩ = 50



Andante ♩ = 60



V.S.

18

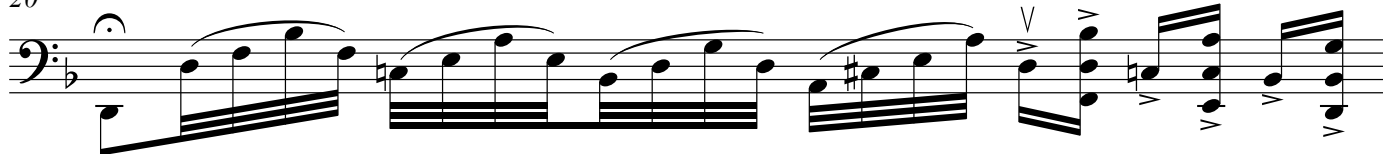


19



Andante ♩ = 60

20

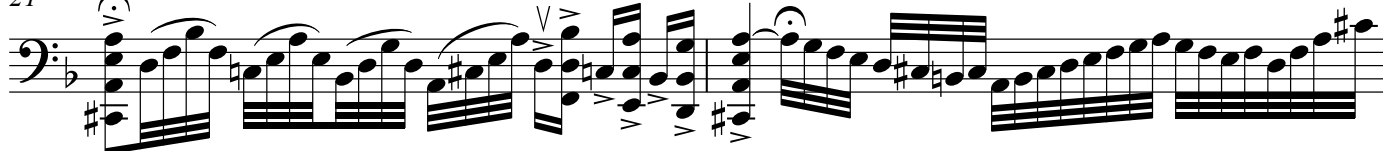


Andante ♩ = 60

Largo ♩ = 25

Andante ♩ = 50

21



Largo ♩ = 25

Andante ♩ = 60

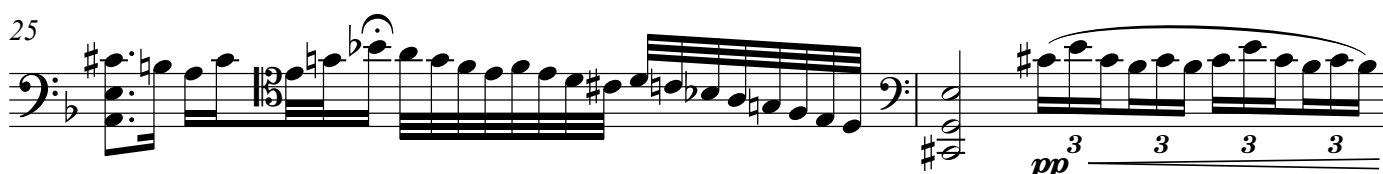
23



24

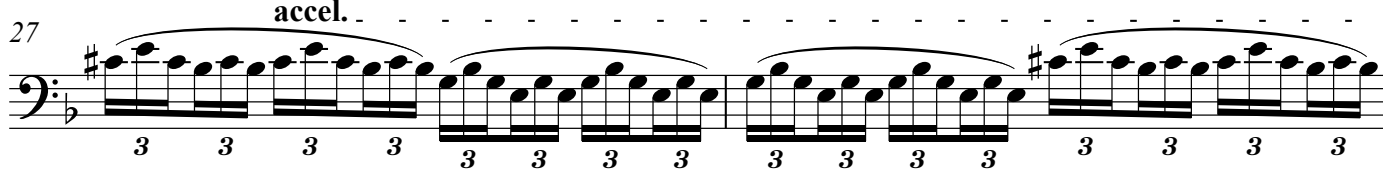


25

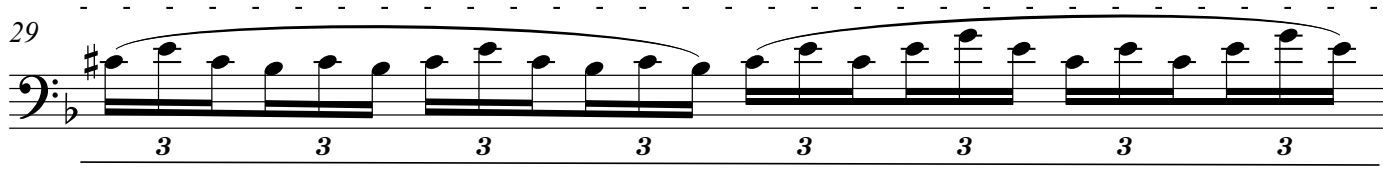


accel. - - - - -

27



29



30

3 3 3 3

Allegro ♩ = 100 Lento ♩ = 30

ff 3 3 3 3

Allegro non troppo ♩ = 80
Fugue

f

36

36

38

38

40

40

43

43

45

45

48

50

52

54

56

58

61

63

65

67

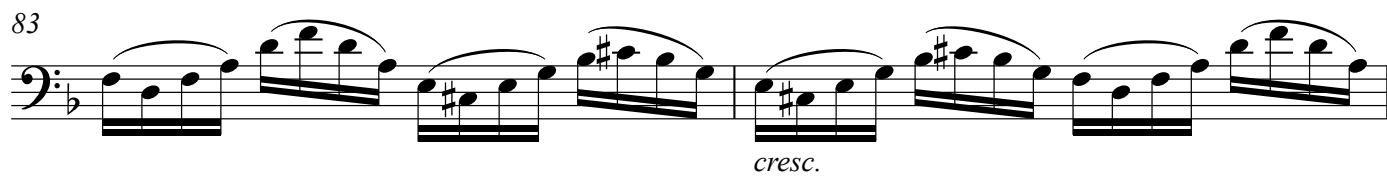
mf

f

p

The musical score for Cello, measures 48-67, is written in bass clef with a key signature of one flat (B-flat). The notation includes eighth notes, sixteenth notes, and chords. Dynamic markings include *mf* (measures 61-62), *f* (measure 63), and *p* (measure 67). Some notes are enclosed in parentheses, indicating they are optional. The score is divided into measures 48-49, 50-51, 52-53, 54-55, 56-57, 58-59, 60-61, 62-63, 64-65, and 66-67.

Note: If a note of a chord is in parentheses, then that note is optional and omissible from performance.



90

92

94

96

99

102

104

106

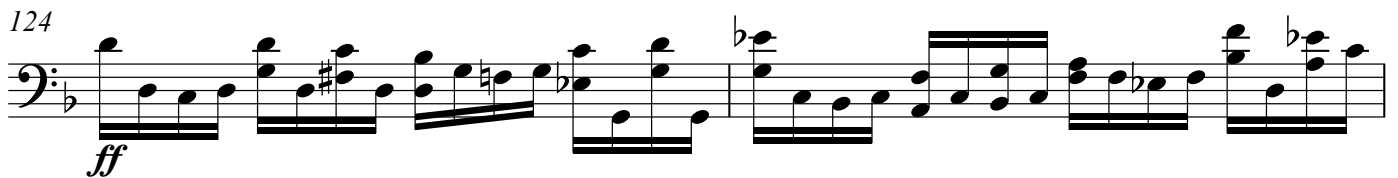
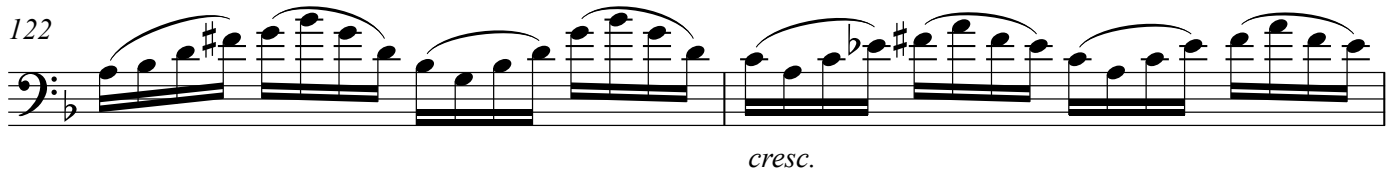
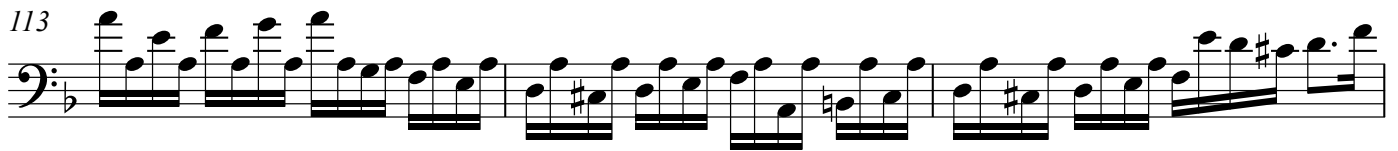
108

111

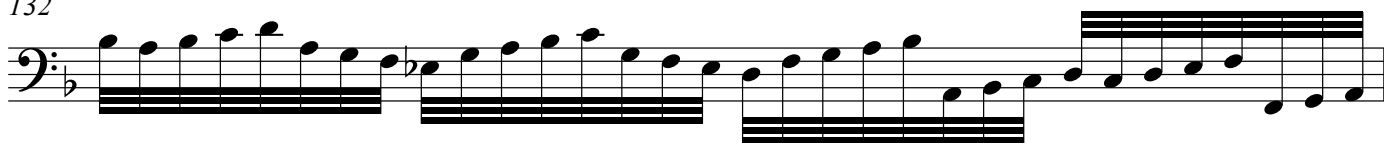
mf

f

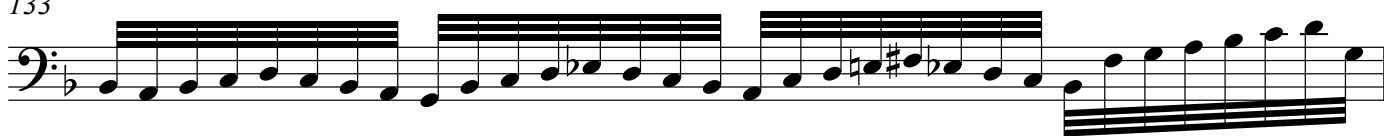
This musical score for Cello spans measures 90 to 111. The key signature has one flat (B-flat), and the time signature is 4/4. The notation is written on a single bass staff. Measures 90-91 feature a melodic line with a slur and a sharp sign. Measures 92-93 show a steady eighth-note pattern. Measures 94-95 continue this pattern with some chromatic movement. Measures 96-98 show a more complex rhythmic pattern with sixteenth notes. Measure 99 is marked *mf* and features a series of sixteenth-note runs. Measures 100-101 continue these runs. Measures 102-103 show a change in rhythm with quarter and eighth notes. Measures 104-105 feature a melodic line with a sharp sign. Measures 106-107 show a steady eighth-note pattern. Measures 108-109 continue this pattern with some chromatic movement. Measures 110-111 are marked *f* and feature a series of sixteenth-note runs. The score is divided into systems by horizontal lines.



132



133



rit. - - - - -

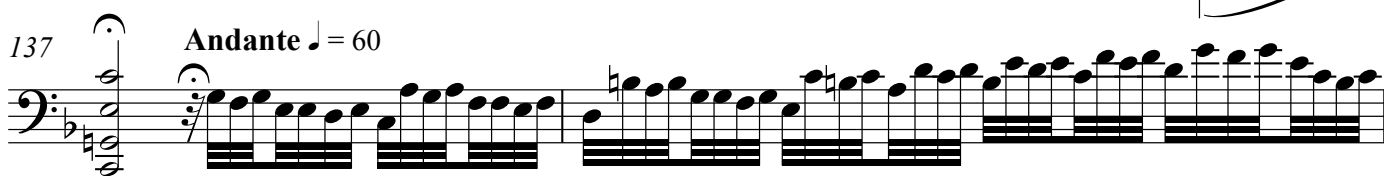
Adagissimo ♩ = 40

134

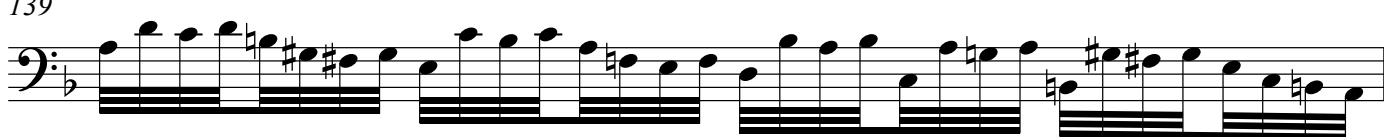


137

Andante ♩ = 60



139

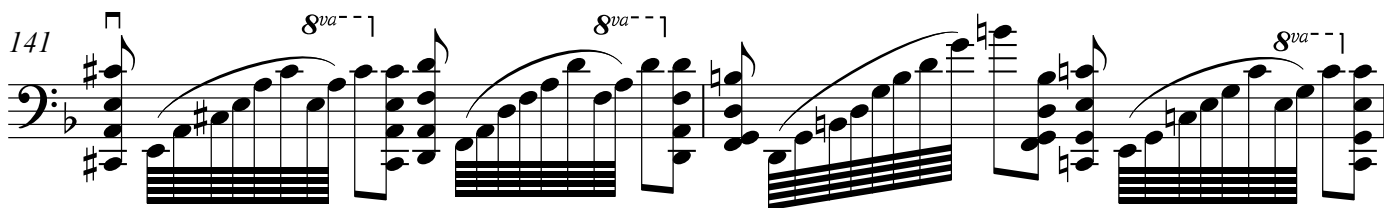


140

Lento ♩ = 35



141



143

