

Cello

Transcribed for Cello by  
Varun Soontornniyomkij

# Toccata and Fugue in D minor

BWV 565

Johann Sebastian Bach (disputed)

**Adagio** ♩ = 80

*ff*

5

**Largo** ♩ = 30

*pp*

9 **Andante** ♩ = 70

11

13

**Lento** ♩ = 50

14 *ff* *tr* *V*

**Andante** ♩ = 60

16

17

V.S.

18



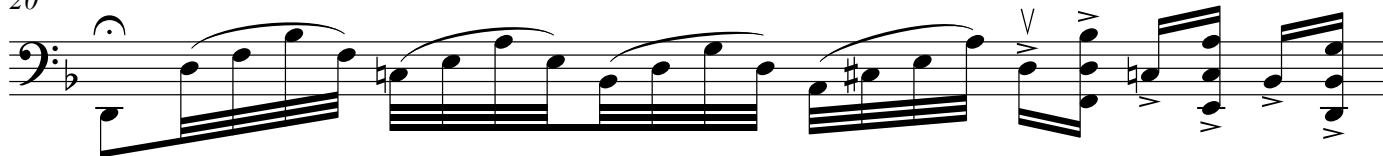
19



Andante ♩ = 60

Largo ♩ = 25

20



21



Andante ♩ = 60

Largo ♩ = 25

Andante ♩ = 50

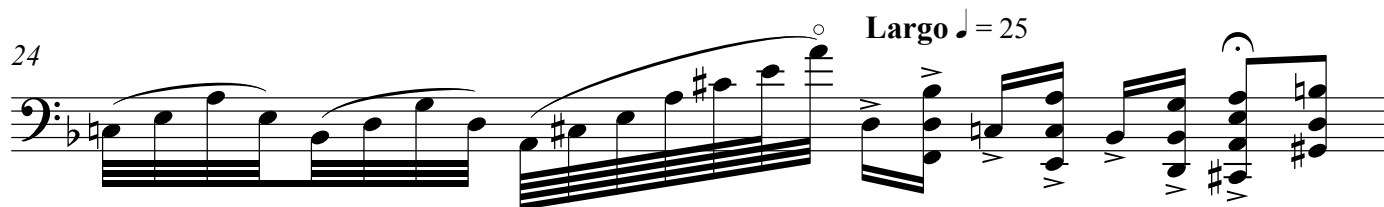
23



Largo ♩ = 25

Andante ♩ = 60

24



Largo ♩ = 25

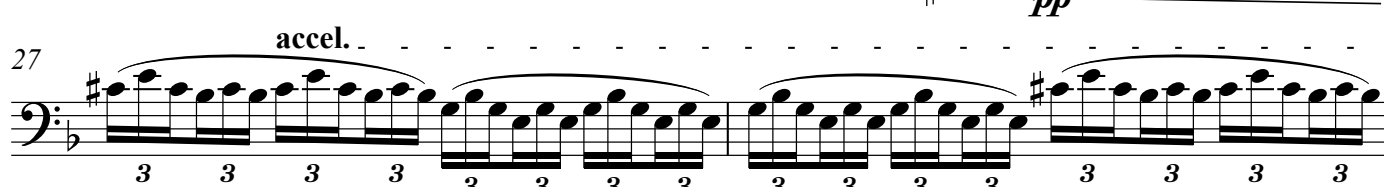
Andante ♩ = 50

25



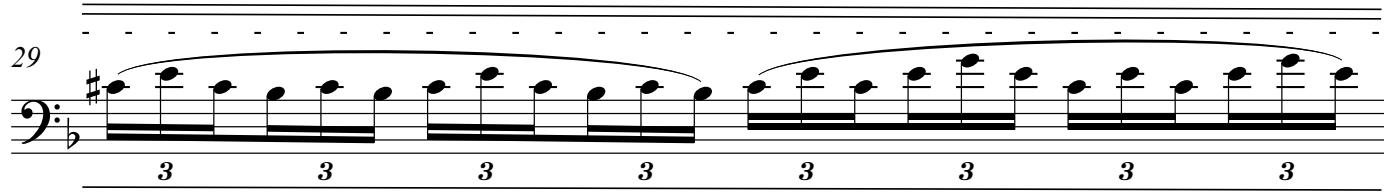
pp

27



accel.

29



30

3 3 3 3

Allegro ♩ = 100 Lento ♩ = 30

*ff* 3 3 3 3

Allegro non troppo ♩ = 80  
Fugue

*f* *f*

36

36

38

38

40

40

43

43

45

45

48

50

52

54

56

58

61

63

65

67

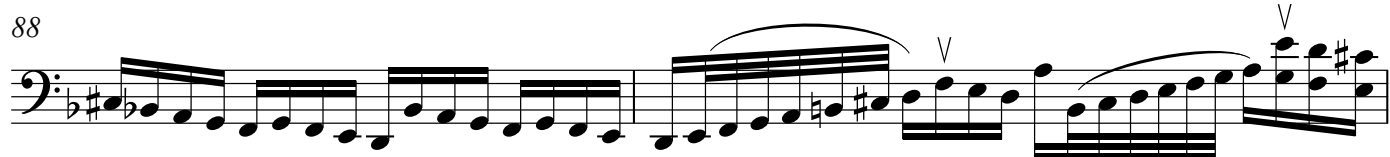
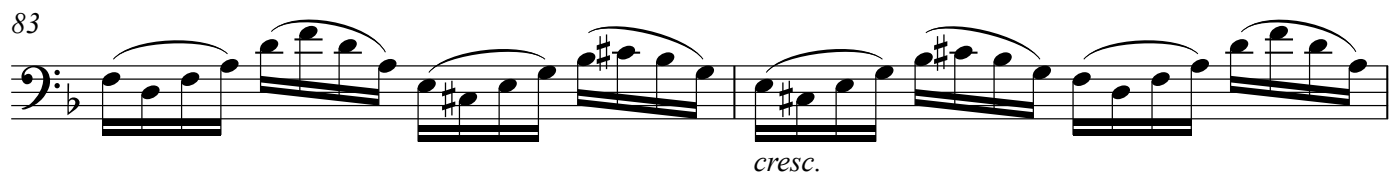
*mf*

*f*

*p*

The musical score for Cello, measures 48-67, is written in bass clef with a key signature of one flat (B-flat). The notation includes eighth notes, sixteenth notes, and chords. Dynamic markings include *mf* (measures 61-62), *f* (measure 63), and *p* (measure 67). Some notes are enclosed in parentheses, indicating they are optional. The score is divided into measures 48, 50, 52, 54, 56, 58, 61, 63, 65, and 67.

Note: If a note of a chord is in parentheses, then that note is optional and omissible from performance.



90

92

94

96

99

102

104

106

108

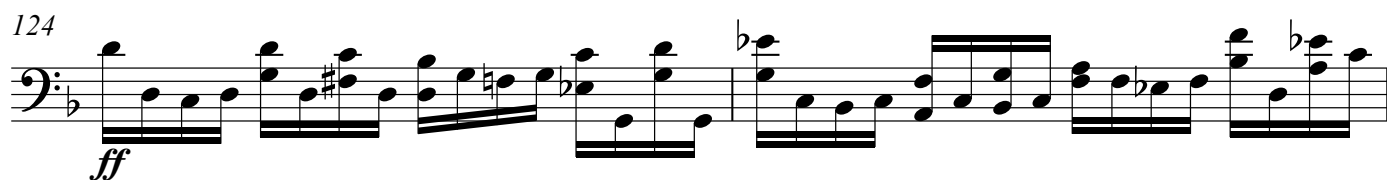
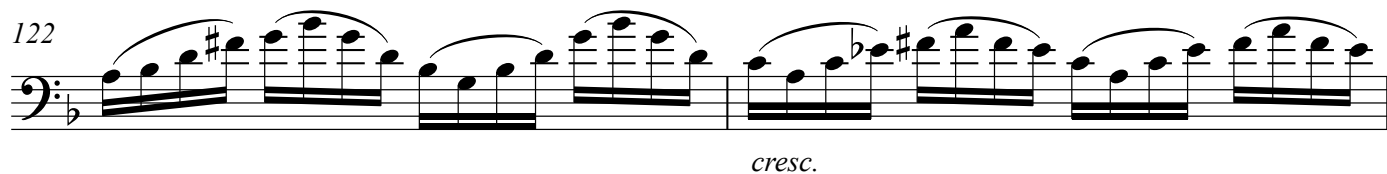
111

*mf*

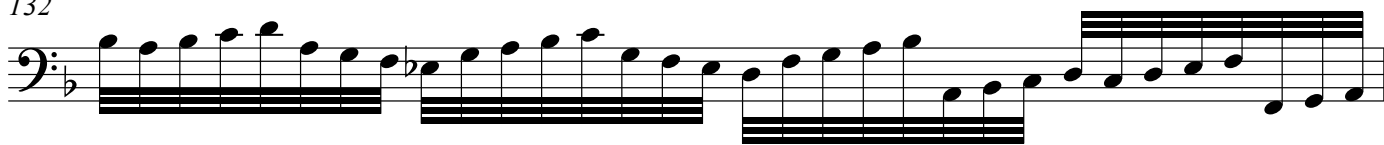
*f*

This musical score for Cello spans measures 90 to 111. The key signature has one flat (B-flat). The notation is as follows:

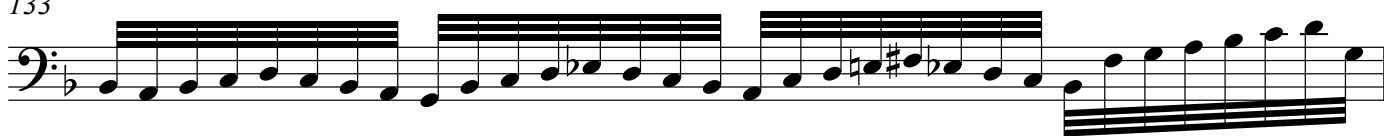
- Measure 90:** Starts with a slur over a sixteenth-note triplet (B-flat, A-flat, G-flat) followed by a dotted quarter note (F-sharp). The rest of the measure consists of eighth-note pairs: (F, E-flat), (D, C), (B, A), (G, F), (E, D), (C, B), (A, G), (F, E).
- Measure 92:** Continues with eighth-note pairs: (D, C), (B, A), (G, F), (E, D), (C, B), (A, G), (F, E), (D, C).
- Measure 94:** Continues with eighth-note pairs: (B, A), (G, F), (E, D), (C, B), (A, G), (F, E), (D, C), (B, A).
- Measure 96:** Continues with eighth-note pairs: (G, F), (E, D), (C, B), (A, G), (F, E), (D, C), (B, A), (G, F). A *mf* dynamic marking appears below the staff.
- Measure 99:** Features a more complex rhythmic pattern with sixteenth-note groups and eighth-note pairs.
- Measure 102:** Continues with a mix of eighth and sixteenth notes.
- Measure 104:** Continues with eighth and sixteenth notes.
- Measure 106:** Continues with eighth notes.
- Measure 108:** Continues with eighth notes.
- Measure 111:** Ends with a final eighth-note pair (F, E) and a *f* dynamic marking below the staff.



132



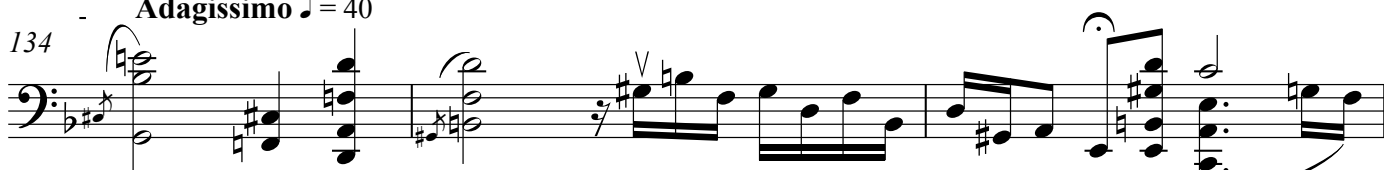
133



rit. - - - - -

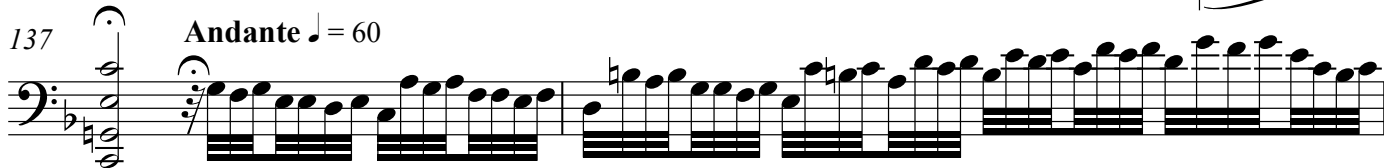
Adagissimo ♩ = 40

134

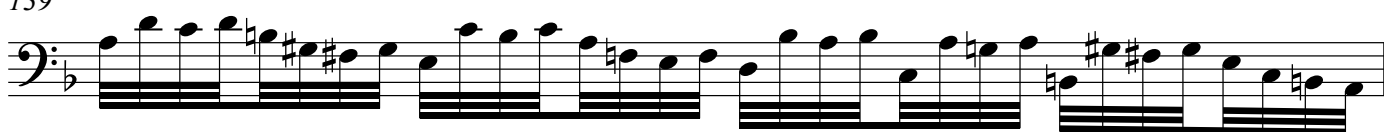


137

Andante ♩ = 60



139

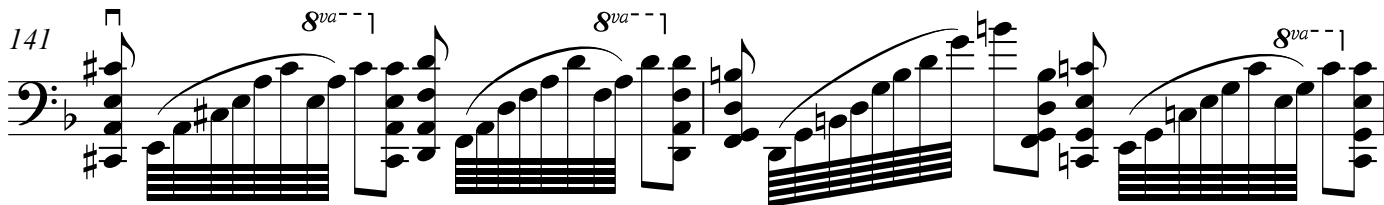


140

Lento ♩ = 35



141



143

