

# Serenade No.1

## in E Major

### for String Orchestra

Antonín Dvorák Op.22

1841 - 1904

Violoncello

## I

## Moderato

Violoncello part of Serenade No. 1 in E Major by Antonín Dvorák, Op. 22. The score is for the first movement, Moderato. It features a variety of musical notations including dynamics (*p*, *mf*, *dim.*, *pp*, *f*, *cresc.*, *unis.*, *pizz.*, *arco*), articulation (accents, slurs, ties), and performance instructions (*div.*, *pizz.*, *arco*). The piece is in E major and 4/4 time. The score is divided into measures, with measure numbers 7, 12, 18, 25, 31, 35, 39, and 43 marked. The key signature has two sharps (F# and C#). The time signature is 4/4. The piece begins with a piano (*p*) dynamic and a series of eighth notes. It includes several sections marked with letters A, B, C, and D. The piece concludes with a piano (*p*) dynamic and a series of eighth notes.

# Violoncello

3

48 *pp* *fp* 2

54 **E** *cresc.* *mf* *mf*

60 *legato dim.* *mf* *p* *dim.* *mf* *p*

65 **F** Solo *pp* *pp*

70 *cresc. molto* *cresc. molto* *f* *p* *dim.* *f* *p*

75 **G** *p* *pp*

81 *poco rit.* *pp* *pp*

Violoncello

## II

Tempo di Valse  $\text{♩} = 70$ 

11 *fz* *cresc.* *f*

27 *f* *dim.* *p dim.*

33 *f* *p* *f* *p*

49 *p*

59 *pp* *poco a poco rit.* *Poco meno mosso* *pp*

68 *Allegro* *ff* *al Trio* *Coda Allegro* *ff*

## Trio

Violoncello score for the Trio section, measures 80-112. The score is written in bass clef with a key signature of three flats (B-flat, E-flat, A-flat) and a 3/4 time signature. The music features various dynamics and articulations.

Measures 80-89: *pp* (pianissimo), *fz* (forzando), *f* (forte), *p* (piano). Markers **E** and **E** are present.

Measures 90-93: *pizz.* (pizzicato), *fz* (forzando). Marker **E** is present.

Measures 94-103: *p* (piano), *fz* (forzando), *p* (piano), *cresc.* (crescendo), *arco* (arco). Markers **E** and **F** are present.

Measures 104-111: *f* (forte), *pp* (pianissimo). Marker **F** is present.

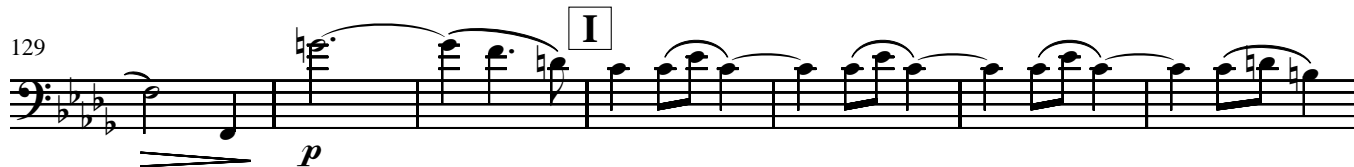
Measures 112-115: *f* (forte), *ff* (fortissimo). Markers **G** and **H** are present.

Violoncello

122



129



136



145



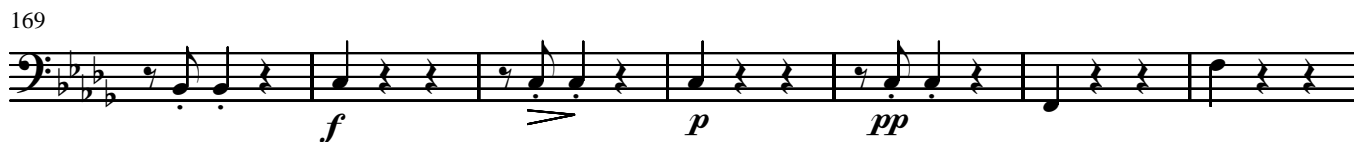
153



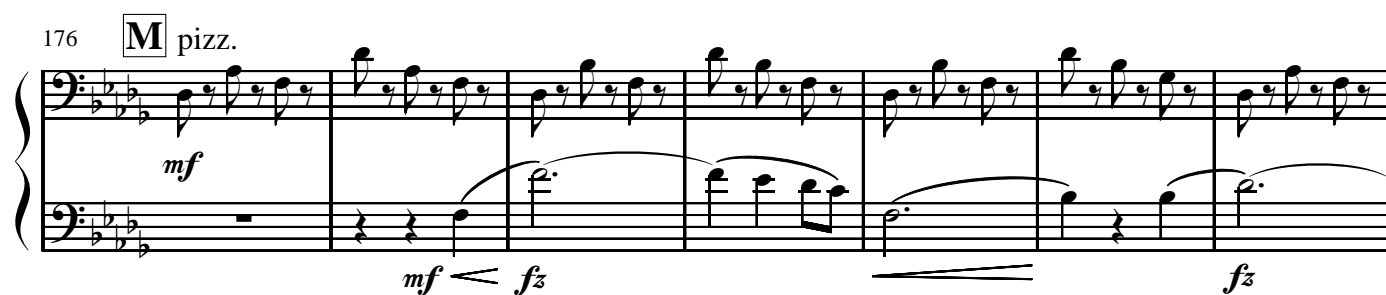
162



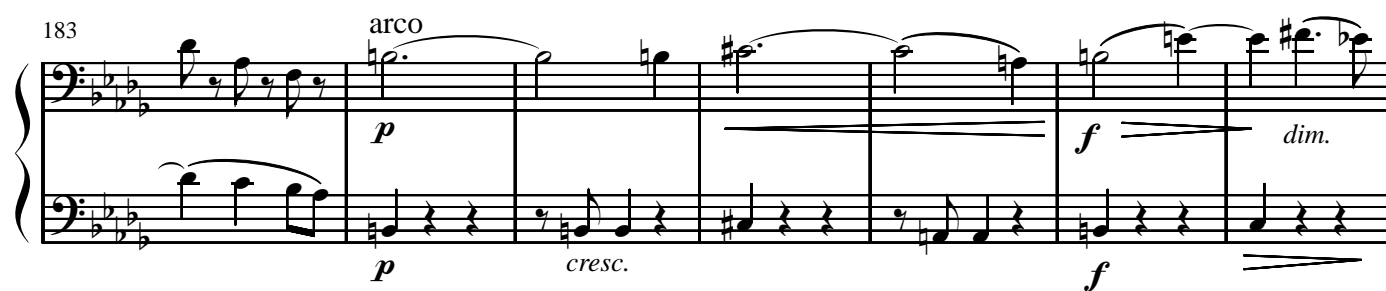
169



176



183



# Violoncello

7

190 **N**

*p* *dim.* *pp*

196

*da capo* *ff*

**Coda Allegro**

*ff*

## III. Scherzo

**Vivace**

*p* *cresc.* *p*

9

*cresc.* *mf* *dim.* *p*

18 **A** pizz.

*pp sempre* *p* *p*

26 **B**

*cresc. poco a poco*

35

*fz*

42 **C**

*ff* *fz*

49

*p* *dim.* *pp*

57 **D**

*ff* *p* *dim.* *pp*

## Violoncello

**E**

67

*pp* *fz*

77

*f* *p* *f* *p* *rit.* **F** *a tempo*

87

*poco rit.* *rit.* **G** *Tempo I* *ppp* *cresc.* *p*

98

*pp* *cresc.* *f* *pp* *div.*

109

*unis.* *dim.* *ppp*

120

**I** *in tempo pizz.* *p* *ppp*

131

**K** *arco* *f* *pp*

141

*cresc.* *f*

# Violoncello

9

152 **L** *p* *sempre pp*

161 *cresc.* *f* *p*

170 *ff* *p*

178 **M** *cresc.* *fz* *cresc.*

190 *f* *ff* *f*

200 **N** 1 2 3 4 5 6 7 8 *f*

210 **O** *pizz.* *arco* *fp*

217 *fp* *fp*

228 *mf* *cresc.*

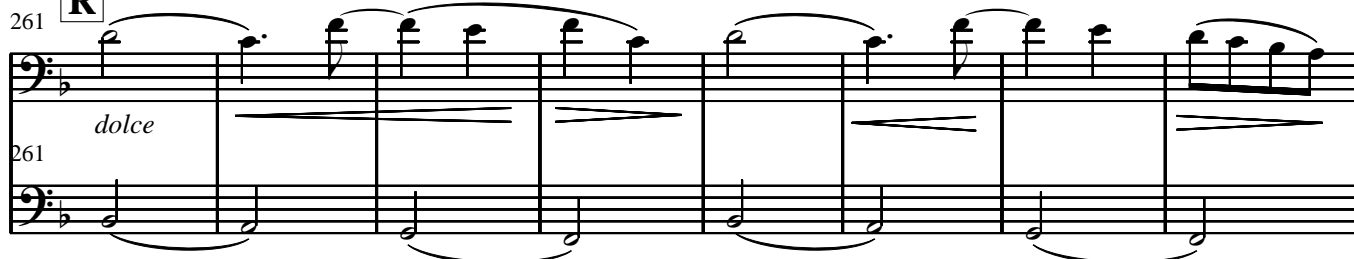
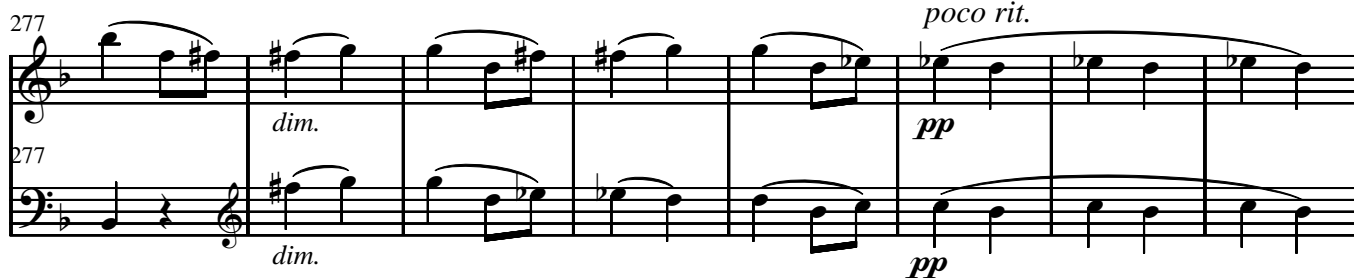
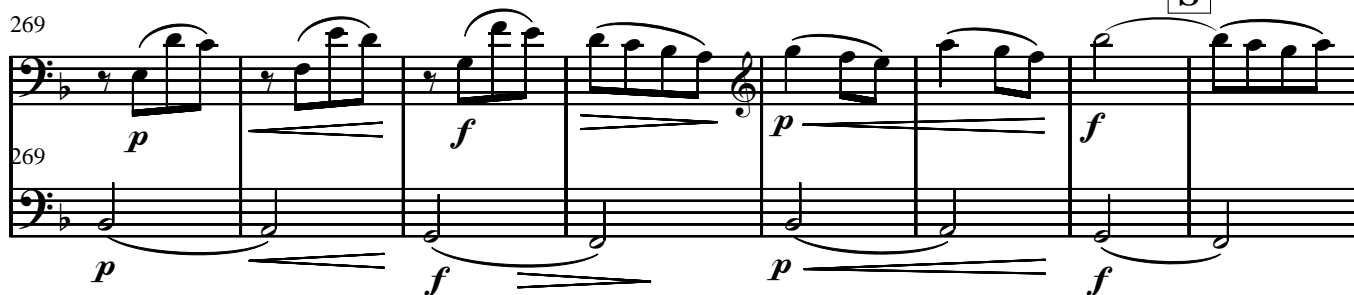
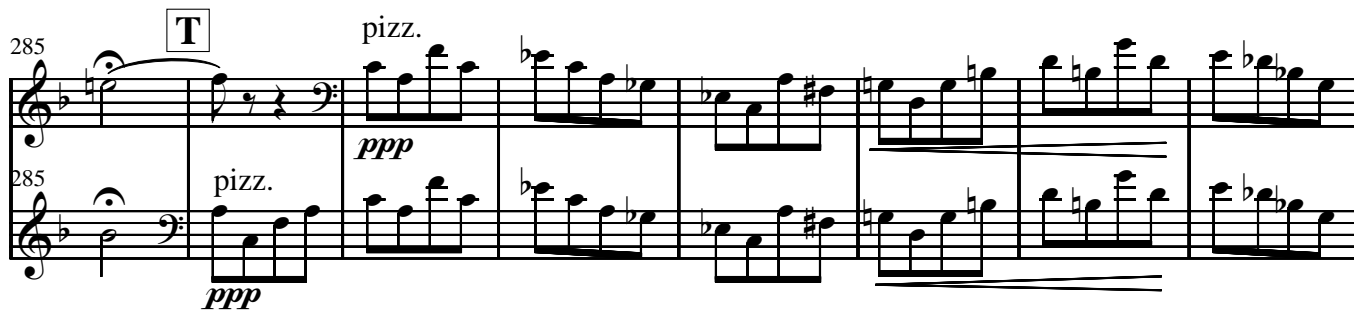
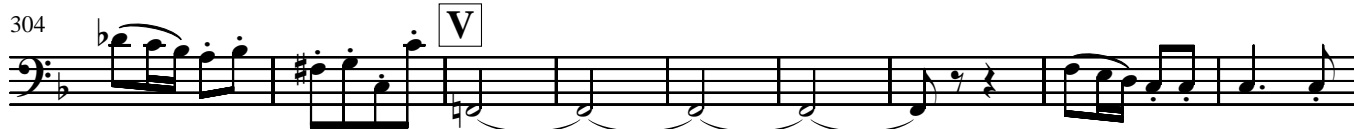
236 **P** *ff*

244 **Q** *tr* *tr* *tr* *tr* *ff*



Violoncello

255

**R****S****T****U****Tranquillo**  
arco**V**

## IV

Larghetto

4

Vn. I

Vc.

*pp*

13

*p cresc.*

*f fz*

21

**A**

*dim.*

*pp*

*dim.*

30

*pp*

div.

**B**

37

*mf*

unis.

*cresc.*

*p*

41

*p*

*cresc.*

*rit.*

*dim.*

*pp*

47

**C** Un poco più mosso

*fp*

*f*

*p*

*dim.*

*f*

53

div.

unis.

**D**

*f*

*p*

*dim.*

*pp*

57

*cresc.*

61

*f*

*dim.*

*p*

*poco rit.*

## 67

74

81

87

93

## V. Finale

## 10

18

27

[illegible]

37 *f*

46 **B** *ff* *ff*

55 *dim.* *dim.*

64 *p* *pp*

73 **C** *div.* *sempre pp* **D**

90 *unis. pizz.* *p* *stacc.* *cresc.*

102 *pp* *cresc.*

112 **E** *arco* *f* *pp*

120 *cresc.* *f*

128 *f* **F** *fp* *dim.*

137 *ppp*

148 *2*

## Violoncello

159 **G** *pp* *poco rit.* *fp*

174 **H** *in tempo* *f* *cresc.* *ff*

185 *p* *dim.* *pp*

195 **I** *pp*

206 *p* *mf*

217 **K** *p* *cresc.* *cresc.*

231 **L** *fp* *f rinforz.* *fz* *fz*

241 *fz* *fp cresc.*

250 **M** *ff*

261 *fp dim.* *p dim.* **N** *pp*

277 *pp* *dim.* *pp* *pp*

288 **P** *pp*

296

304

312

320

328

336

346

352

352

357

366

375

384

*cresc.*

*mf*

*f*

*ff*

*ff*

*p*

*dim.*

*pp*

**Moderato**

*p*

*f*

*p*

*pp*

**Presto**

*ff*

*fz*

*fz*

*fz*

*fz*

*fz*

**Q**

**R**

**T**

**U**