

Orchestra 2

1st Horn in G/F/E/A/B $\flat$  Basso/E $\flat$

Louis Spohr  
(1784-1859)

Symphony No.7  
Op. 121

1st Horn in G/F/E/A/B $\flat$  Basso/E $\flat$ 

**Allegretto** =138

version 1.0-25-10-19

196

*f* *f* **2** **6** Fl.1

212 **E** *sfz* *sfz*

219 *sfz* *sfz* *f* **3**

227 **19** C Hn.2 *fp* *fp* *fp* **3** **3** **3**

253 **3** **3** **3** **3** **3** **F** *f* **9** *muta in F*

269 **16**

## II. Zeit der Leidenschaften

1 **Larghetto** (♩=96) **12** Ob. *in F*

17 **13** Fl.

33 *in F* **2** Vln. I *p*

38 **poco a poco stringendo**

41 **Allegro moderato** (♩=120) **2** *p* *p* *p* *p* *f*

50 **A** **2** **4** *p* *p*

Orchestra 2, 1st Horn in G/F/E/A/B $\flat$  Basso/E $\flat$ 

4

60

Cl.  $p < f$   $p$   $p < f$   $p$   $p <$

66

**B**  $4$  Ob.  $7$  Ob. *muta in E*

81

**C** *in E*  $p$

86

$2$  *muta in F*

92

**C** Vln. 1 *in F*

100

**D**

108

$3$  **D**  $14$  Vln. 1  $3$   $f >$

131

**E**  $5$  Vln. 1  $3$   $f$

144

**F**  $4$  Vln. 1  $p \text{ cresc.}$   $f > p$

153

**G**

156

**H**  $2$   $p < >$   $p < >$   $p < >$

164

**I**  $17$  Fl.  $p$   $f$  *muta in A*

186 *in A*  
*p*

192 *muta in B $\flat$  Basso* *Vln. 1*  
*G* *2* *3* *3*

200 *in B $\flat$  Basso*

207 *3*

215 *H* *8* *Fl.* *p*

229 *p<>* *p<>* *4* *tr* *Cl.*

238 *tr* *tr* *f*

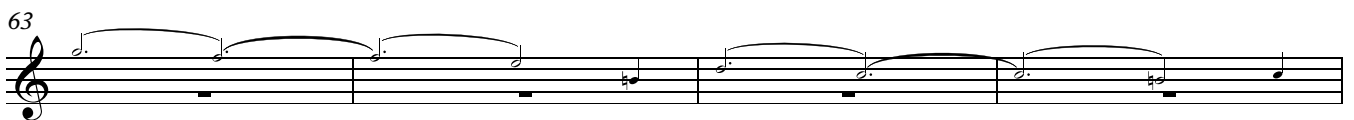
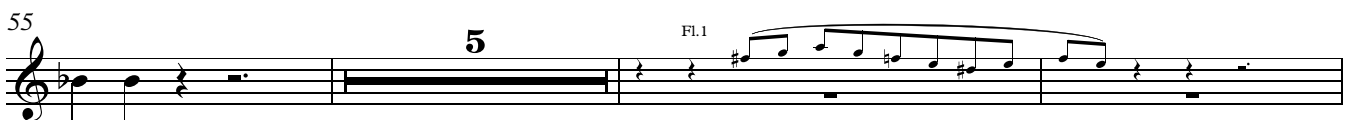
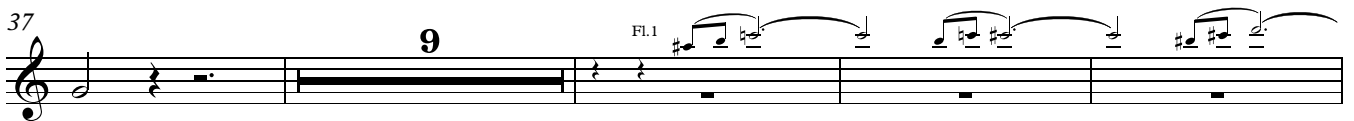
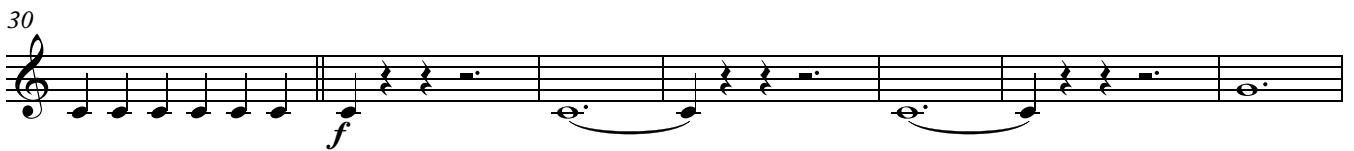
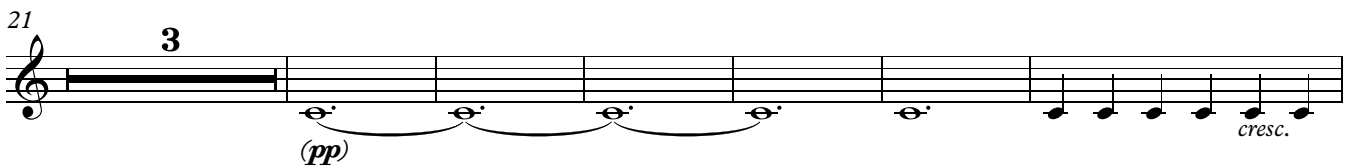
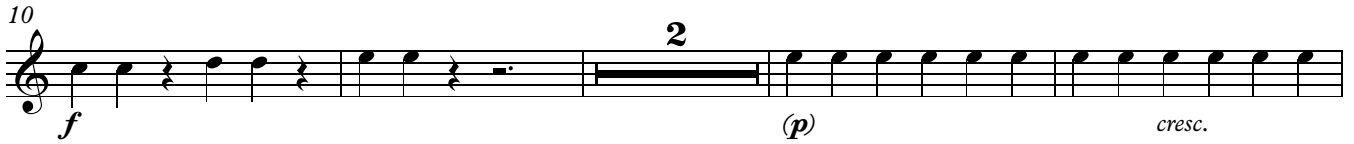
242 *J* *3* *p* *f* *p* *f*

254 *4* *Vc.* *3*

265 *p* *cresc.* *f*

270 *ff* *muta in E $\flat$*

## III. Endlicher Sieg des Göttlichen

1 **Presto**  $\text{♩} = 96$ 

67 **B**

*p*

73

*cresc.*

78

*f*

85

*p*

92

*cresc. sfz p*

98 **C**

*cresc. f*

11

113

Ob.

Fl.

*pp*

119

2

5

Fl.

130

*pp*

134

2

139 **D**

*pp*

144

Fl.1

7

Orchestra 2, 1st Horn in G/F/E/A/B $\flat$  Basso/E $\flat$ 

8

153 C Hn.2

157 *f* *p*

163 3 Vln.1

170 **E** *p* *cresc.* *f*

175 9 *p* *cresc.* *f*

188 *p* *cresc.*

193 2 *f* (*p*) *cresc.*

199 **F** *f* *dim.*

203 *p*

207 12 Vln. 1

223 *p* *cresc.* *f*



227 **G** **38** **H**

Vc.

267 **40** **2**

Vc.

310 **Adagio** (♩=132) **11**

Vln. 1

325 **I** **11**

Vln. 1

*mf cresc. ff*

340 **11**

Vln. 1

343 **9**

*(mf) ff*

355 **11**

Vln. 1

*pp*