

Solo Violin

Toccata and Fugue in D minor

Transcribed for Violin and Cello by
Varun Soontornniyomkij

BWV 565

Johann Sebastian Bach (disputed)
Edited and fingered by Orfeo Mandozzi**Adagio** ♩ = 80

musical notation for measures 1-5, featuring a treble clef, key signature of two flats, and a 4/4 time signature. The notation includes a forte (*ff*) dynamic, a *sul A* instruction, and a *sul G* instruction. A violin (Vc.) part is indicated.

musical notation for measures 6-8, featuring a bass clef, key signature of two flats, and a 12/8 time signature. The notation includes a *p* dynamic and a repeat sign.

musical notation for measures 9-10, featuring a bass clef, key signature of two flats, and a 12/8 time signature. The notation includes a **Largo** tempo marking (♩ = 25), an *ad lib.* instruction, and a 7-measure rest.

musical notation for measures 11-12, featuring a treble clef, key signature of two flats, and a 4/4 time signature. The notation includes an **Andante** tempo marking (♩ = 70), a *pp* dynamic, and a 3-measure rest.

musical notation for measures 13-14, featuring a treble clef, key signature of two flats, and a 4/4 time signature. The notation includes a *fff* dynamic and a 3-measure rest.

musical notation for measures 15-16, featuring a treble clef, key signature of two flats, and a 4/4 time signature. The notation includes a *fff* dynamic and a 3-measure rest.

musical notation for measures 17-18, featuring a treble clef, key signature of two flats, and a 4/4 time signature. The notation includes a **Lento** tempo marking (♩ = 50) and an **Andante** tempo marking (♩ = 60).

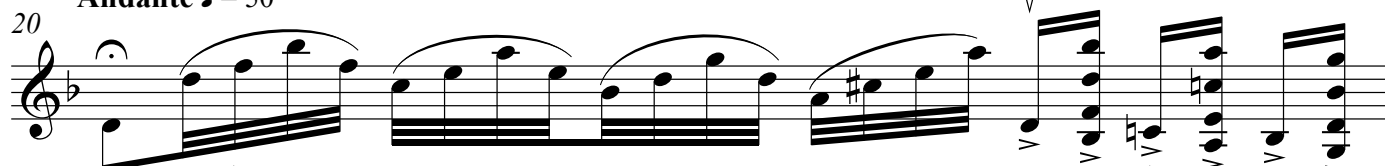
musical notation for measures 19-20, featuring a treble clef, key signature of two flats, and a 4/4 time signature.

rit. .



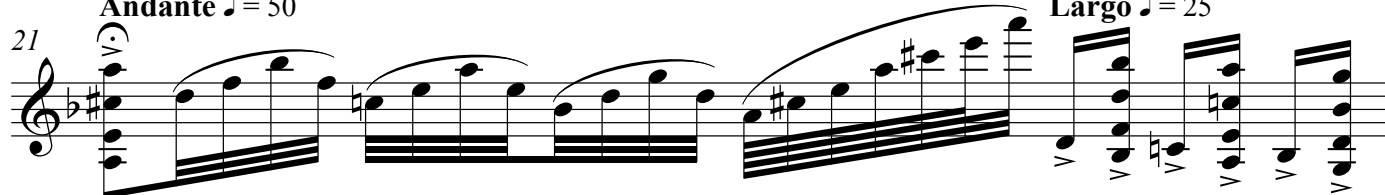
Andante ♩ = 50

Largo ♩ = 25

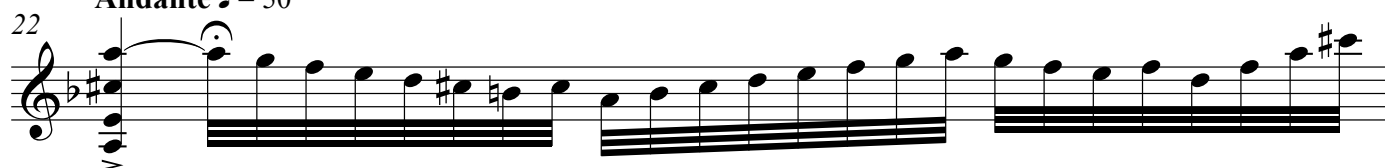


Andante ♩ = 50

Largo ♩ = 25



Andante ♩ = 50



Largo ♩ = 25

Andante ♩ = 50



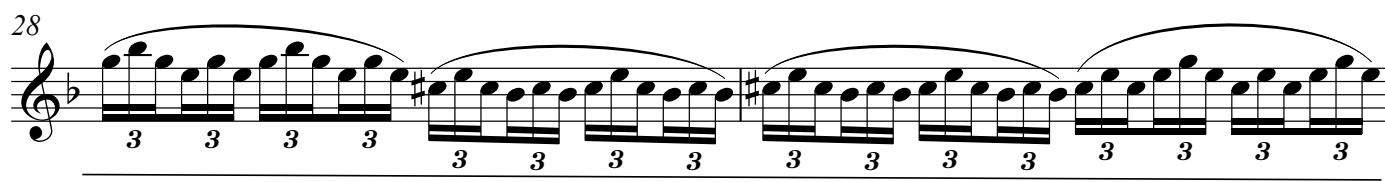
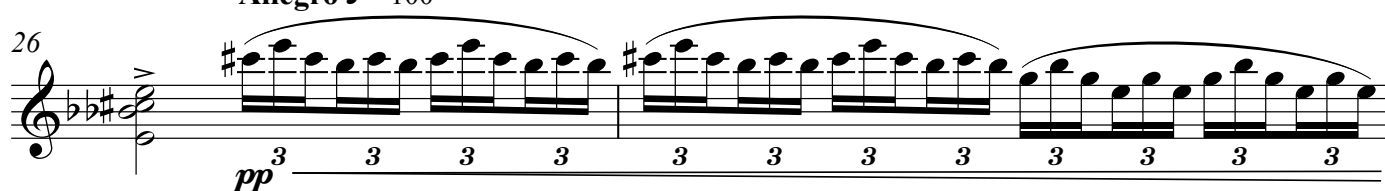
Largo ♩ = 25



Andante ♩ = 50



Allegro ♩ = 100



Solo Violin

3

Lento $\text{♩} = 30$

30

ff

Fugue
Vc. Allegro $\text{♩} = 100$

33

f

36

f

39

f

42

f

44

f

46

f

49

f

52

f

56



59



62



64



67



70



73



75



78



82



86

2

Vc.

90

93

95

mf

98

101

104

108

111

f

113

115 *vc.*

118

122

125

128

Andante ♩ = 50

130

Largo ♩ = 25 **Recitativo**

131

133

134

Solo Violin

7

