

Toccata and Fugue in D minor

BWV 565

Johann Sebastian Bach (disputed)

0 ♩ = 80

sul A

Vc.

Largo ♩. = 25

Andante ♩ = 70

11

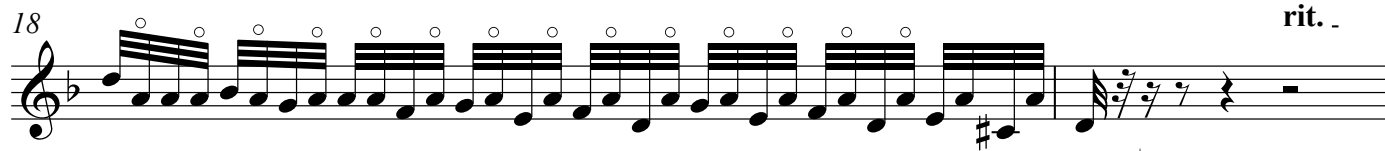
13

15

Andante ♩ = 60

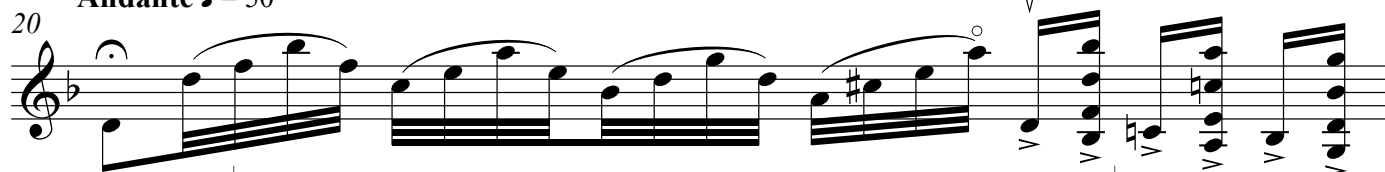
17

rit. .



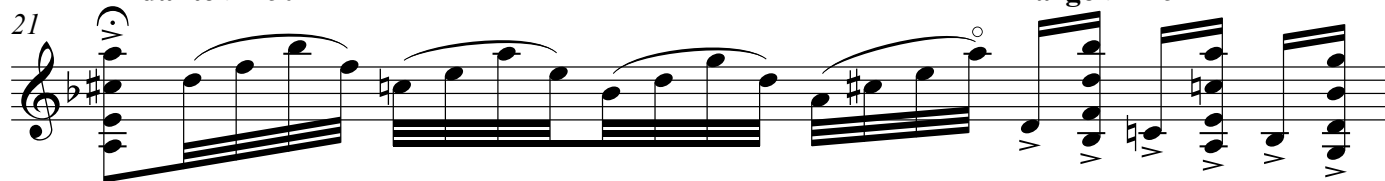
Andante ♩ = 50

Largo ♩ = 25

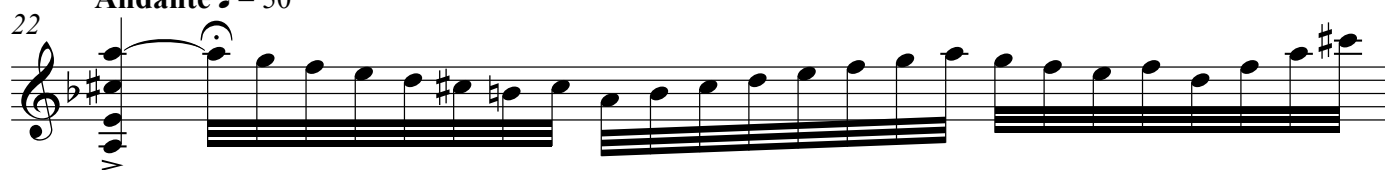


Andante ♩ = 50

Largo ♩ = 25



Andante ♩ = 50



Largo ♩ = 25

Andante ♩ = 50



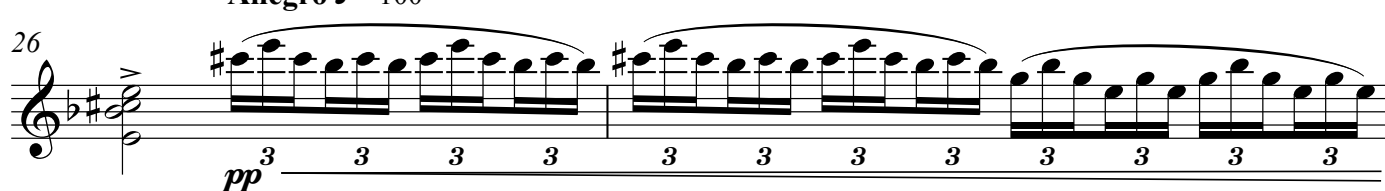
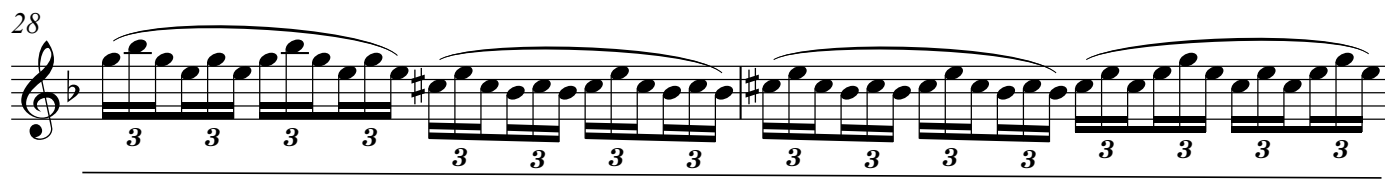
Largo ♩ = 25



Andante ♩ = 50



Allegro ♩ = 100

*pp*

Solo Violin

3

Lento ♩ = 30

30

ff

Fugue
Vc. Allegro ♩ = 90

33

36

39

42

44

46

49

52

V.S.

Solo Violin

58

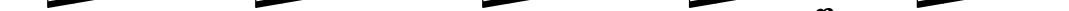
58

60

mf

63

f

66 


69

f

72

p *f*

75



Musical notation for measure 75, featuring a treble clef, a key signature of one flat, and a complex melodic line with many beamed eighth and sixteenth notes.

78

p *cresc.*

82

cresc.

86 **2** Vc. *f* *V*

90

93

95 *mf*

98

101

104

108

111 *f*

113

115 *vc.*

118

p cresc.

122

cresc. ff

125

128

Andante ♩ = 50

130

rit.

Largo ♩ = 25 **Recitativo**

131

Andante ♩ = 60

133

rit.

134

Adagissimo ♩ = 30 Andante ♩ = 60

Solo Violin

7

