

Fuga XVIII

BWV 887

J. Sebastian Bach
Arr. Peter H. Besseling

Measures 1-8 of the Fuga XVIII. The piece is in D major (three sharps) and 6/8 time. Measures 1-4 feature a four-measure rest in both staves, indicated by a '4' above the treble staff and below the bass staff. Measures 5-8 show the beginning of the fugue theme in the treble staff, with the bass staff remaining silent.

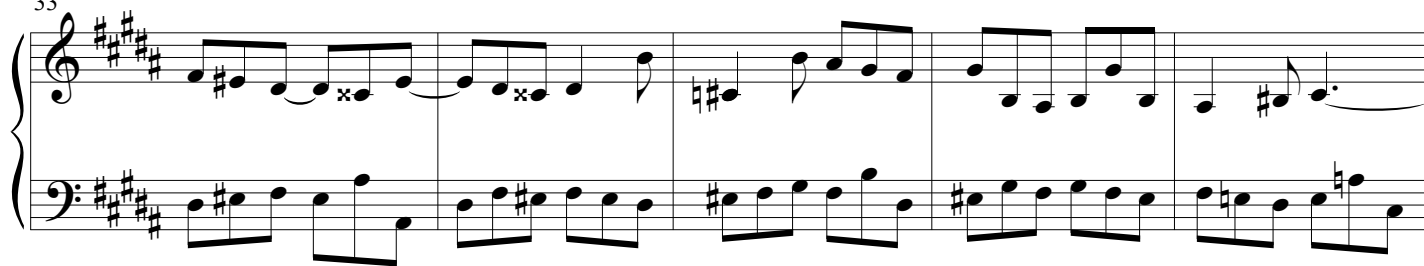
Measures 9-14 of the Fuga XVIII. The treble staff continues the fugue theme, while the bass staff enters in measure 9 with a descending eighth-note pattern. Measure 14 ends with a repeat sign in the treble staff.

Measures 15-20 of the Fuga XVIII. The treble staff continues the fugue theme, and the bass staff provides harmonic support with eighth-note patterns. Measure 20 ends with a repeat sign in the treble staff.

Measures 21-26 of the Fuga XVIII. The treble staff continues the fugue theme, and the bass staff provides harmonic support with eighth-note patterns. Measure 26 ends with a repeat sign in the treble staff.

Measures 27-32 of the Fuga XVIII. The treble staff continues the fugue theme, and the bass staff provides harmonic support with eighth-note patterns. Measure 32 ends with a repeat sign in the treble staff.

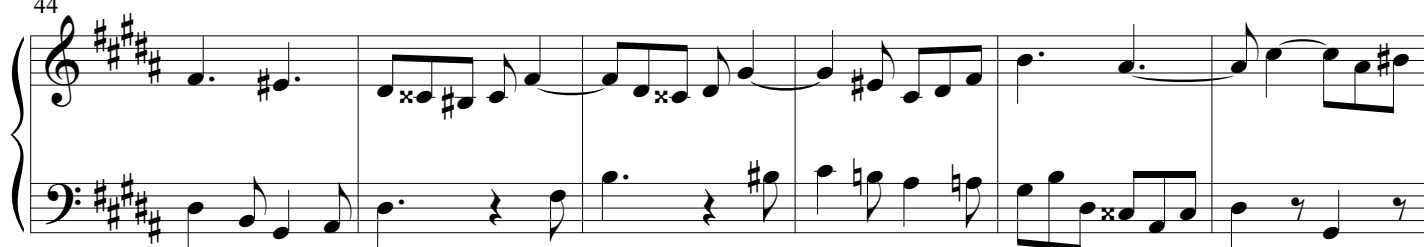
33



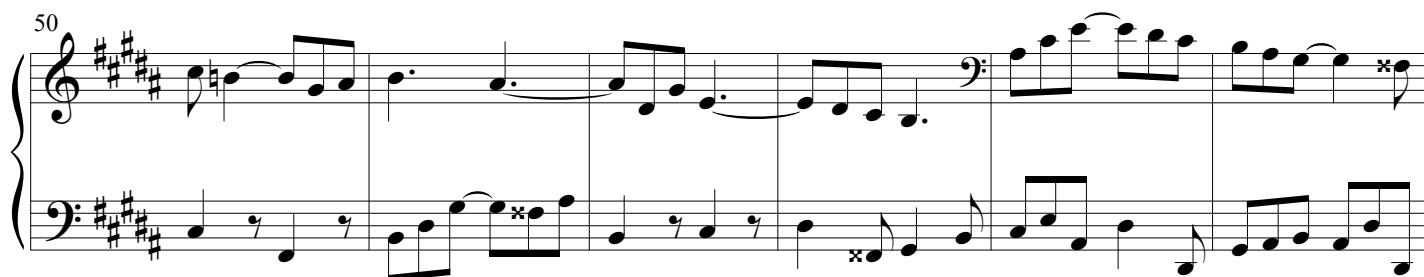
38



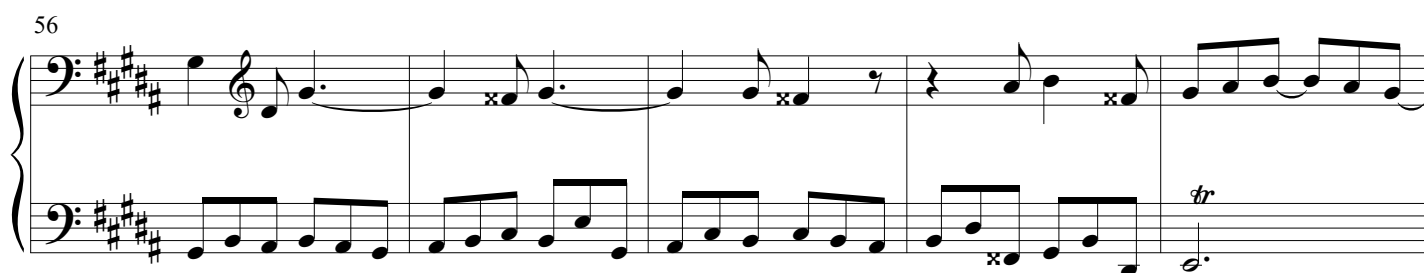
44



50



56



61



66

72

77

82

87

93

98

Measures 98-102. The system shows a grand staff with treble and bass clefs. The key signature is three sharps (F#, C#, G#). Measure 98 starts with a treble clef and a bass clef. The melody in the treble clef begins with a quarter note G#4, followed by eighth notes A#4, B4, and C5. The bass line begins with a quarter note G#2, followed by eighth notes A#2, B2, and C3. The system continues with measures 99, 100, 101, and 102, showing complex rhythmic patterns and accidentals.

103

Measures 103-108. The system continues the musical score. Measures 103-104 show a treble clef and a bass clef. The melody in the treble clef begins with a quarter note G#4, followed by eighth notes A#4, B4, and C5. The bass line begins with a quarter note G#2, followed by eighth notes A#2, B2, and C3. The system continues with measures 105, 106, 107, and 108, showing complex rhythmic patterns and accidentals.

109

Measures 109-114. The system continues the musical score. Measures 109-110 show a treble clef and a bass clef. The melody in the treble clef begins with a quarter note G#4, followed by eighth notes A#4, B4, and C5. The bass line begins with a quarter note G#2, followed by eighth notes A#2, B2, and C3. The system continues with measures 111, 112, 113, and 114, showing complex rhythmic patterns and accidentals.

115

Measures 115-119. The system continues the musical score. Measures 115-116 show a treble clef and a bass clef. The melody in the treble clef begins with a quarter note G#4, followed by eighth notes A#4, B4, and C5. The bass line begins with a quarter note G#2, followed by eighth notes A#2, B2, and C3. The system continues with measures 117, 118, and 119, showing complex rhythmic patterns and accidentals.

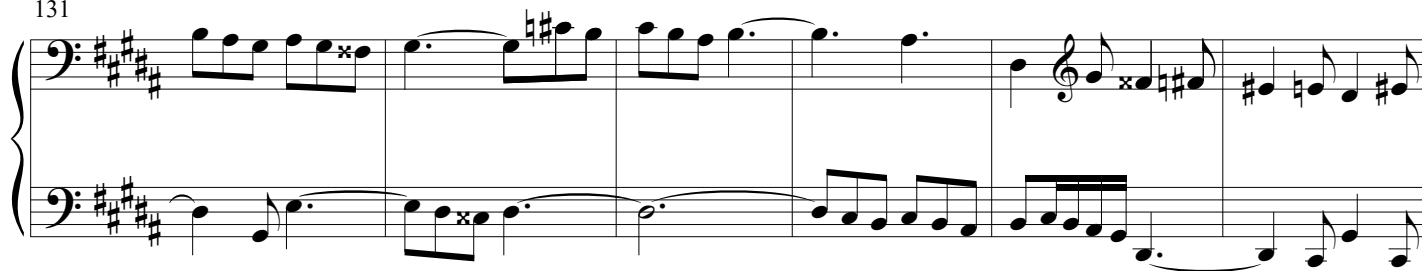
120

Measures 120-124. The system continues the musical score. Measures 120-121 show a treble clef and a bass clef. The melody in the treble clef begins with a quarter note G#4, followed by eighth notes A#4, B4, and C5. The bass line begins with a quarter note G#2, followed by eighth notes A#2, B2, and C3. The system continues with measures 122, 123, and 124, showing complex rhythmic patterns and accidentals.

125

Measures 125-129. The system continues the musical score. Measures 125-126 show a treble clef and a bass clef. The melody in the treble clef begins with a quarter note G#4, followed by eighth notes A#4, B4, and C5. The bass line begins with a quarter note G#2, followed by eighth notes A#2, B2, and C3. The system continues with measures 127, 128, and 129, showing complex rhythmic patterns and accidentals.

131



137

