

Fuga XVIII

BWV 887

J. Sebastian Bach
Arr. Peter H. Besseling

Measures 1-8 of the Fuga XVIII. The piece is in D major (four sharps) and 6/8 time. Measures 1-4 feature a four-measure rest in both staves, indicated by a '4' above the treble staff and below the bass staff. Measures 5-8 show the beginning of the fugue theme in the treble staff, while the bass staff remains silent.

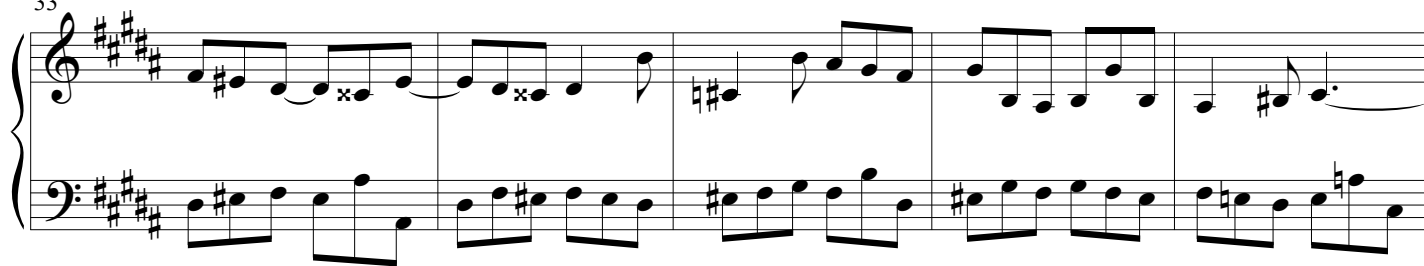
Measures 9-14 of the Fuga XVIII. The treble staff continues the fugue theme, with some notes marked with an 'x' indicating specific articulation or fingering. The bass staff begins to play in measure 9, providing a harmonic accompaniment.

Measures 15-20 of the Fuga XVIII. Both staves continue with the fugue. The treble staff features a series of eighth-note runs, while the bass staff provides a steady accompaniment of eighth notes.

Measures 21-26 of the Fuga XVIII. The fugue continues with more complex rhythmic patterns in the treble staff, including sixteenth notes. The bass staff continues its accompaniment, with some notes marked with an 'x'.

Measures 27-32 of the Fuga XVIII. The final system shows the fugue theme continuing in the treble staff, with the bass staff providing a concluding accompaniment. The piece ends with a final chord in the treble staff.

33



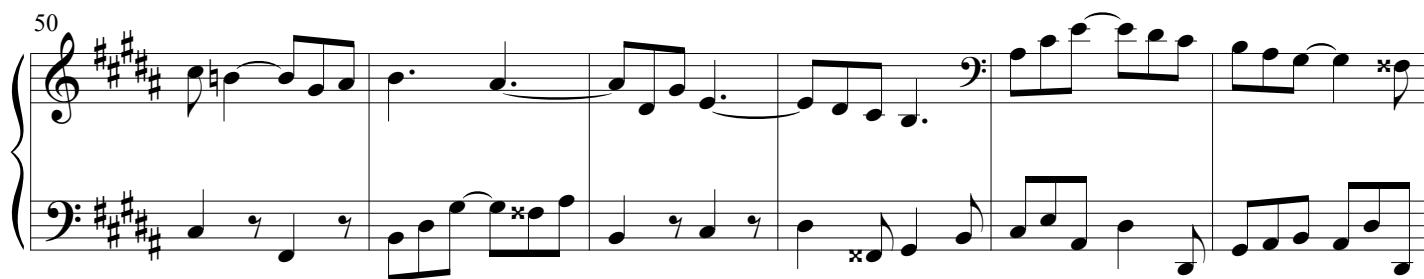
38



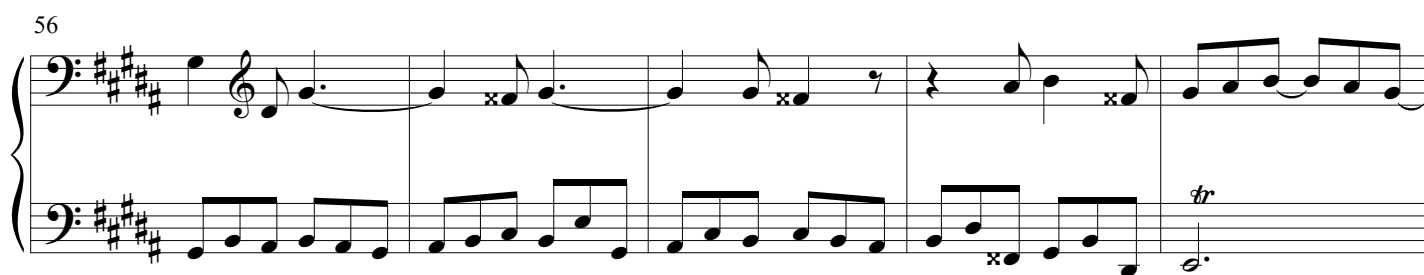
44



50



56



61



66

72

77

82

87

93

98

Measures 98-102 of the musical score. The key signature is D major (two sharps). The melody in the right hand features eighth and sixteenth notes, with some accidentals (flats) in measures 99 and 100. The left hand provides a steady accompaniment with eighth notes and some chords.

103

Measures 103-108 of the musical score. The melody continues with similar rhythmic patterns. Measure 105 features a more complex melodic line with slurs and ties. The left hand continues with a consistent eighth-note accompaniment.

109

Measures 109-114 of the musical score. The right hand melody shows some chromatic movement with flats. The left hand accompaniment remains steady with eighth notes.

115

Measures 115-119 of the musical score. The right hand features a series of slurs and ties, creating a flowing melodic line. The left hand continues with eighth-note accompaniment.

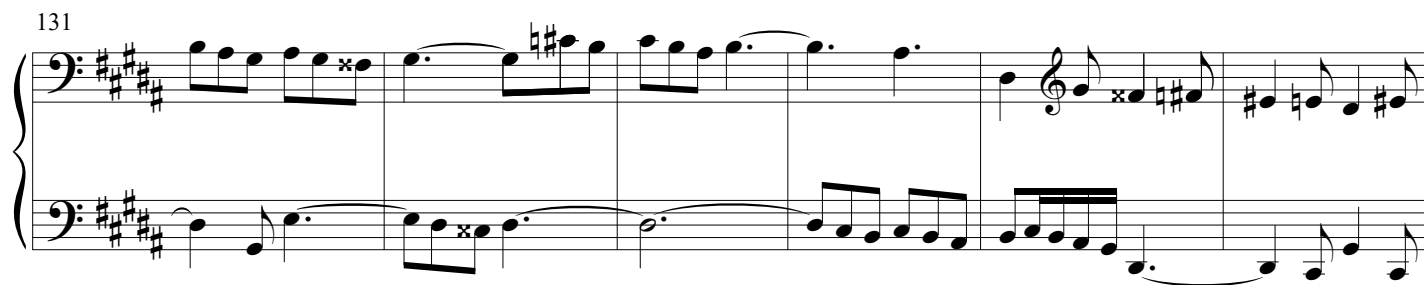
120

Measures 120-124 of the musical score. The right hand includes a measure with two rests (measure 122). The left hand continues with eighth-note accompaniment, featuring some chromatic lines.

125

Measures 125-129 of the musical score. The left hand takes over the primary melodic role with a series of slurs and eighth-note patterns. The right hand provides a steady accompaniment with eighth notes.

131



137

