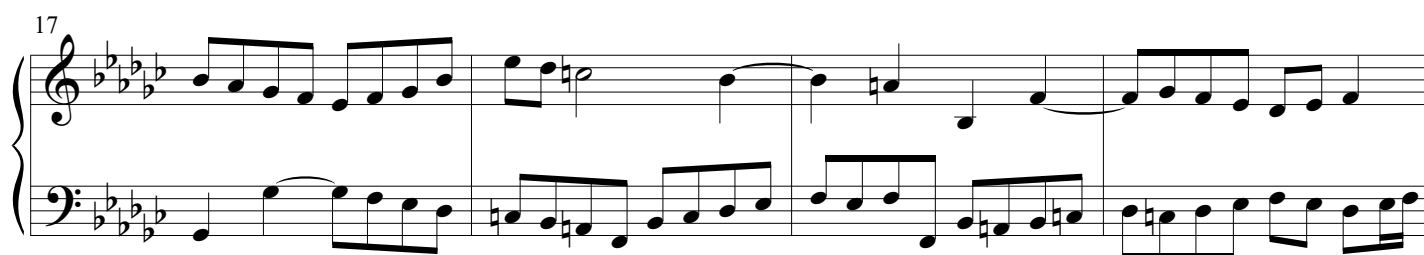
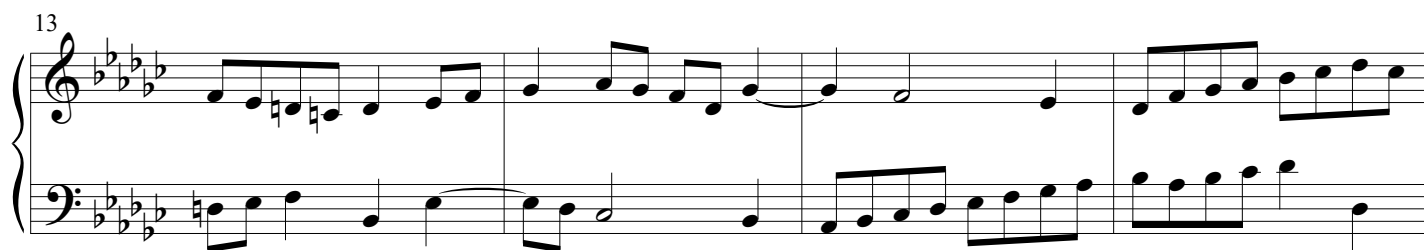
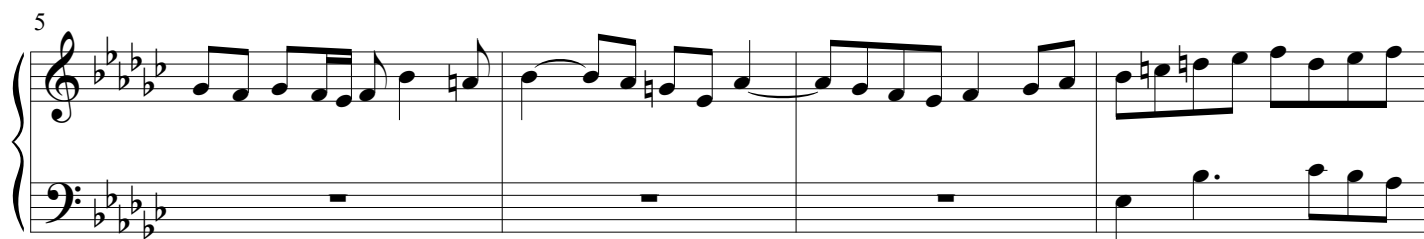
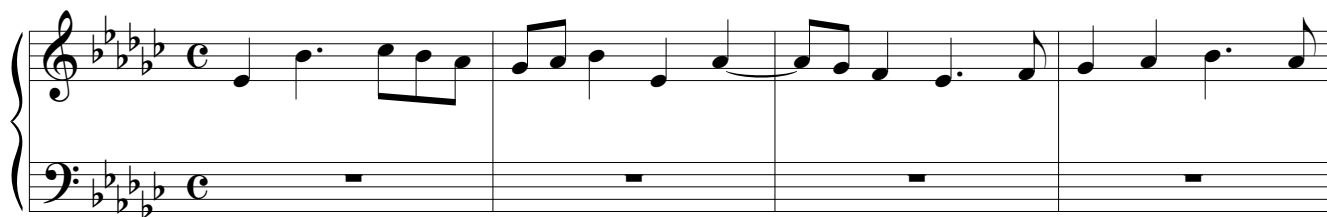


# fuga VVVV

BWV 853

J. Sebastian Bach  
Arr. Peter H. Besseling



21

Measures 21-24 of the musical score. The key signature is B-flat major (two flats). The melody in the right hand features eighth and quarter notes with some rests. The left hand provides a rhythmic accompaniment with eighth and sixteenth notes.

25

Measures 25-28 of the musical score. The melody continues with quarter and eighth notes. The left hand features a more active pattern with sixteenth and thirty-second notes.

29

Measures 29-32 of the musical score. The right hand has a melodic line with some ties. The left hand continues with a rhythmic accompaniment of eighth and sixteenth notes.

33

Measures 33-36 of the musical score. The melody in the right hand includes some half notes and quarter notes. The left hand maintains the rhythmic accompaniment.

37

Measures 37-40 of the musical score. The right hand features a melodic line with eighth and quarter notes. The left hand continues with a rhythmic accompaniment.

41

Measures 41-44 of the musical score. The right hand has a melodic line with quarter and eighth notes. The left hand features a rhythmic accompaniment with some rests.

45

49

53

57

61

65

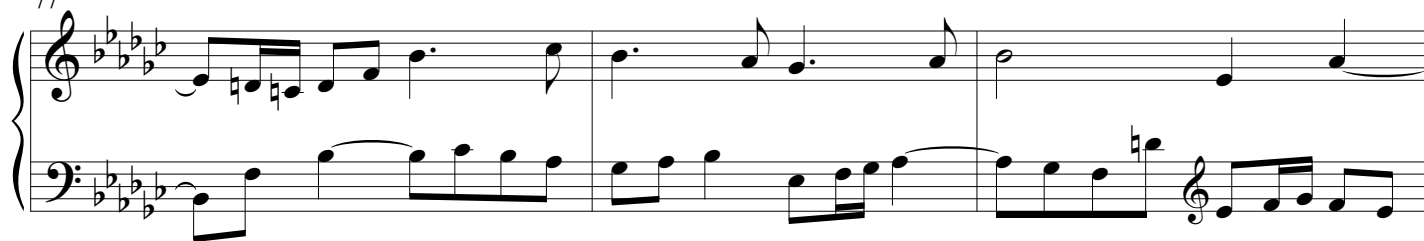
69



73



77



80



84

