

Viola

dedicated to László G. Horváth, Rózsa Richárd
and the Anima Musicæ Chamber Orchestra

Concerto antico

for violin, cello and string orchestra

I

Tamás Beischer-Matyó

Vivace ♩ = 138

Violin I (Vln. I) part, measures 1-50. The score is in G major (one sharp) and 3/4 time. It begins with a *pp* dynamic. Measure 13 starts the Viola part with a *p* dynamic. Measure 25 features a first ending bracket. Measure 32 starts a new section. Measure 41 features a crescendo from *p* to *f*. Measure 46 features a *ff* dynamic. Measure 50 features a *ffz* dynamic leading to a *p* dynamic.

Copyright Tamás Beischer-Matyó, 2020

This work is licensed under the Creative Commons Attribution-NonCommercial-NoDerivatives 4.0 International License.
To view a copy of this license, visit <https://creativecommons.org/licenses/by-nc-nd/4.0/>

http://beischermatyo.hu/concerto_antico
bmt@beischermatyo.hu

solo 58 II (II)

p

solo 68

ppp

pp

pp

74 *rit.* - - - **Allegro moderato** ♩ = 88

ppp *p* *f* *p*

79 83

p *f* *pesante*

87

pp *p*

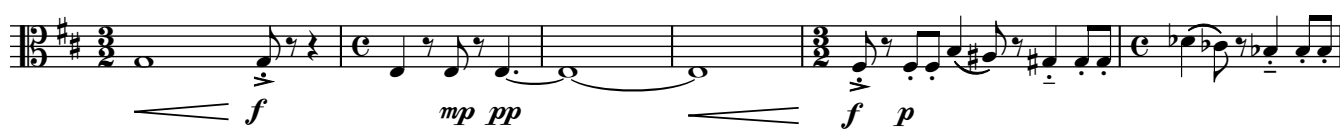
91

mf *ff*

97 **Vivo** ♩ = 112

sfz *p* *f* *p*

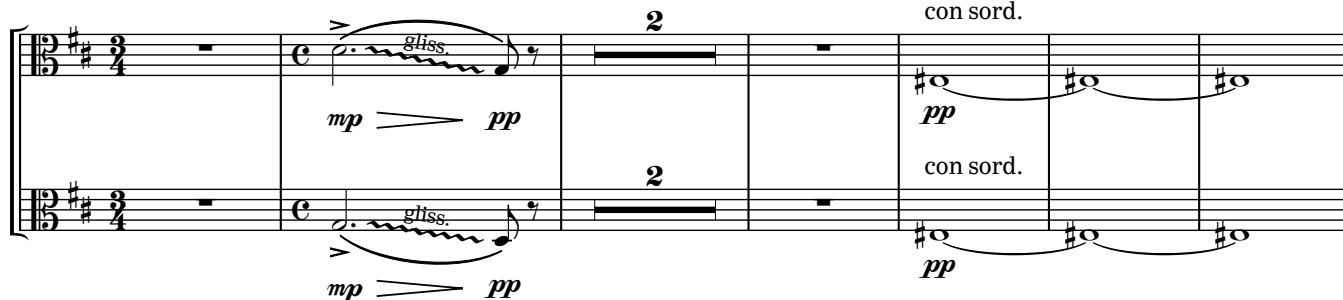
106

rit. - - - *a tempo* ♩ = 112

111

pizz.

116

rall. - - - - - ♩ = 76*rit.* - - - - - ♩ = 69*con sord.*

125

rall. - - - - - *Adagio* ♩ = 63

129

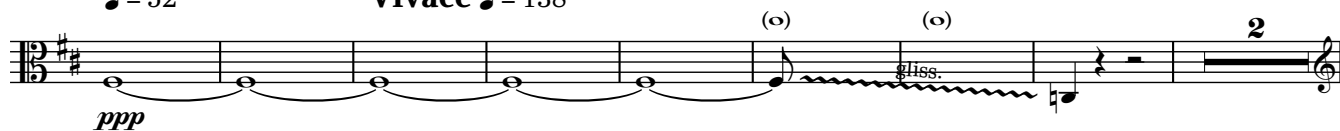
rall. ♩ = 60 *rall.* ♩ = 58

135

rall. - - - - - ♩ = 56*rall.* - - - - - ♩ = 54*rall.* - - - - -

139

♩ = 52

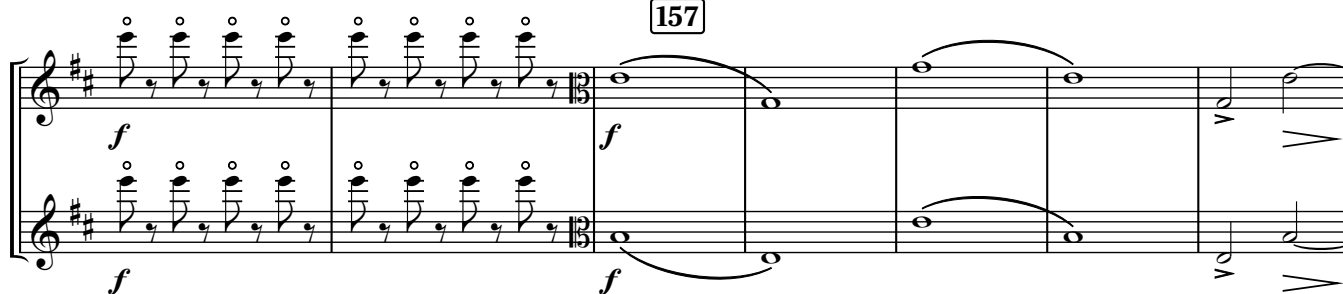
Vivace ♩ = 138

147

senza sord.



157



162

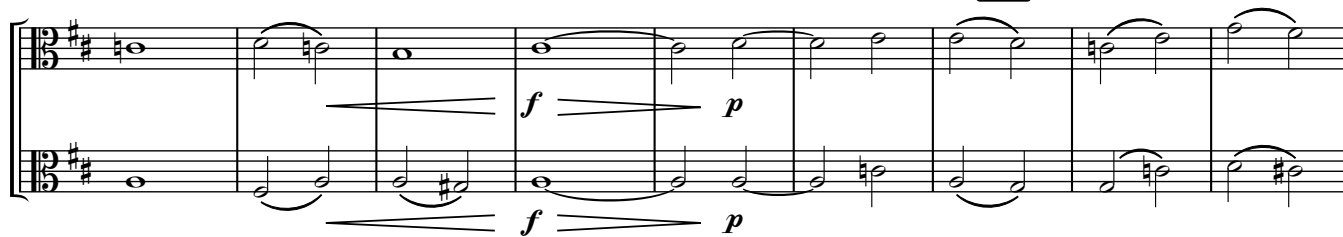
171



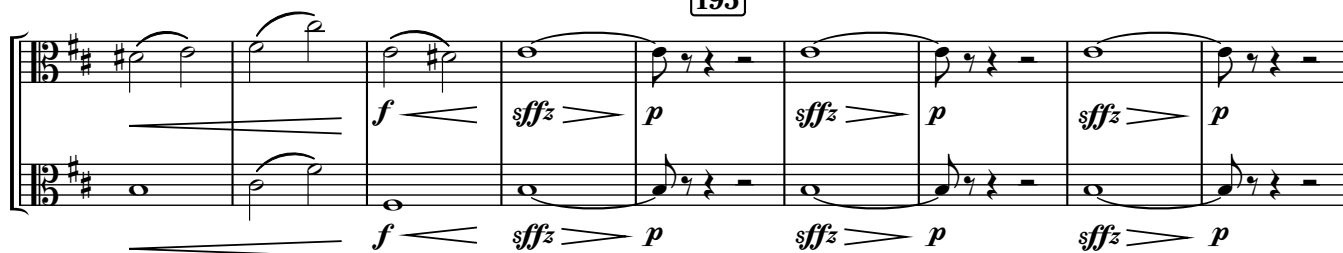
180



188



195



203 210

sfz *p* *sfz* *p* *sfz* *p* *sfz* *p*

220

S. vln.

p *pp*

rit. molto

p *mp* *mf* *f* *ff*

228

a tempo ♩ = 138

f *f* *f*

234

rall. ♩ = 88 *a tempo* ♩ = 138 *rall.*

sfz *p* *f* *p*

239 244

♩ = 88 ♩ = 138 ♩ = 88 ♩ = 138

pp *f* *f* *f*

ff *ff* *ff*

rall. ♩ = 88

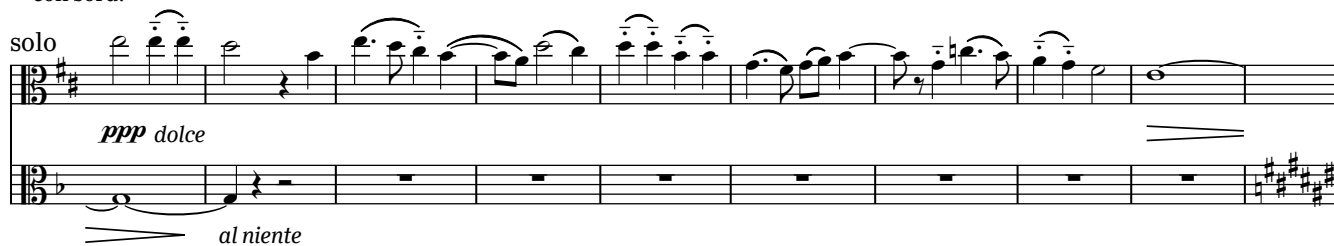
pp *ff*

II

Con moto ♩ = 126con sord.
sul tasto, senza vibr.

10

con sord. senza vibr.



19



27

33



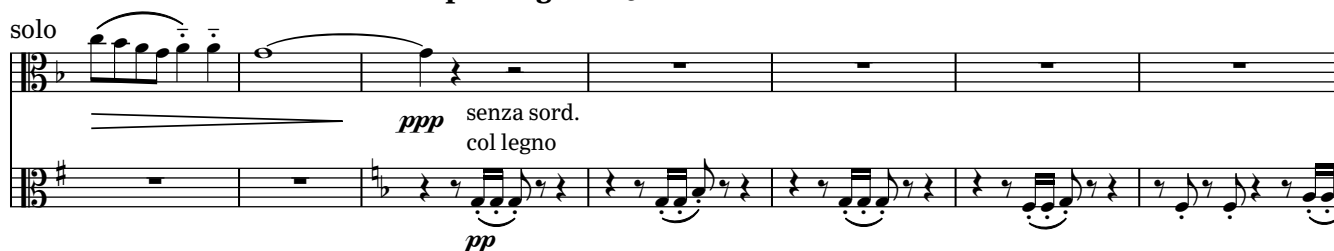
37

43

sul tasto (senza vibr.)

rit. - - - - - *a tempo*

47

rall. molto - - - - -**Un poco agitato** ♩ = 138

[56] *un poco tratt.* ♩ = 112
(senza sord.)

solo

mf *ord.* *pp*

p

a tempo ♩ = 138

col legno

[61]

ppp *pp* *mp*

[68] *rall.* *un poco tratt.* ♩ = 112
sul tasto (senza vibr.) *rit.*

solo

ppp *pp* *pp*

solo ♩ = 112 *rit.* ♩ = 112 *rit.*

[77] *Con moto* ♩ = 126 **[82]** *rall.* *un poco tratt.* ♩ = 112

solo

ord. *pp* *mp* *ppp* *pp*

ppp *mp* *ppp*

[89] *rall. molto* *Un poco agitato* ♩ = 138

ppp *f* *pp*

[100] *rall. molto al* ♩ = 84

pizz. *p*

104
un poco tratt. ♩ = 112
 arco
p cantabile

110

114
rit. a tempo

123

120
rit. . . . Appassionato ♩ = 168
mf *ff*

131

140

149

144 148

tratt. ♩ = 152 *rit.* - - *a tempo* ♩ = 168

p

152 156

mp

160

rall. *al* ♩ = 84

2

ppp

168

Con moto ♩ = 126

S. vc.

177 183

col legno

p

2

S. vln.

191

rit. *a tempo*

(spicc.)

pp

197

rit. *a tempo*

III

p espr.

solo

202

rall. **Lento molto** ♩ = 48

pppp

con sord.

Vln. I-II

ppp

pppp

solo

con sord.

ppp

rit. . . . *a tempo* ♩ = 48

rit.

con sord.

ppp

con sord.

ppp

211 $\text{♩} = 112$ *poco accel.* **215** *Un poco agitato* $\text{♩} = 138$

pp *p* *p*

221 *rall.* $\text{♩} = 112$ (con sord.) *rall.* $\text{♩} = 96$

solo

p *pp* *pp*

229 *rall.* $\text{♩} = 76$ *rall.*

f *p* *p* *p* *ppp*

III

Allegretto $\text{♩} = 88$

8



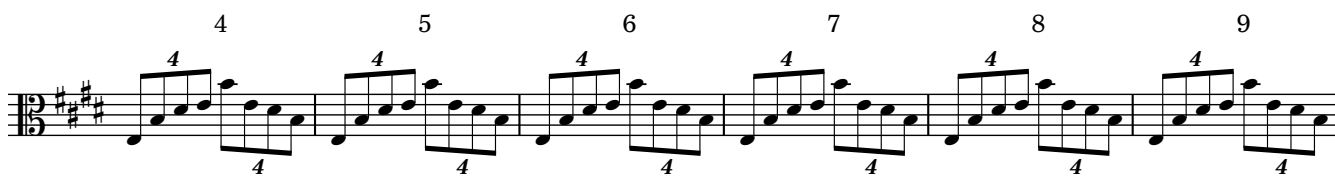
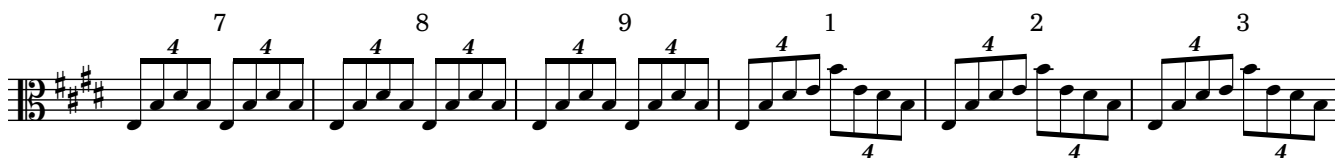
16



24



33



42

pizz. arco pizz.

f *f* *p*

52

57

arco

ff

66

73

Meno mosso ♩ = 76

ppp

S. vln.

84 *pp*

92

102 *p* *mf* *p* *mf*

110 *Allegretto* ♩ = 88 *ff*

115 *pizz.* *gliss.* *gliss.* *gliss.* *gliss.* *gliss.* *gliss.* *p*

123 *arco, sul pont.* *trem.* *pp*

col legno

133 *mp*

Allegro vivace ♩ = 152 *f* *mp*

138 *ord.* *p*

142 *col legno* *mp*

146 *mf* *f*

ord. 153

ff *mp*

159

f *ff*

167

173

solo *pp*

pp

solo

182

solo *pp* duro e ritmico *mp*

188

solo *p* *pp* *p*

193

solo

Measures 193-198. The top staff (treble clef) features a solo line starting with a mezzo-piano (*mp*) dynamic, followed by a piano (*p*) section. The bottom staff (bass clef) provides accompaniment, starting with a piano (*p*) dynamic. The key signature is one sharp (F#).

199

solo

Measures 199-205. The top staff (treble clef) features a solo line starting with a mezzo-piano (*mp*) dynamic, followed by a mezzo-forte (*mf*) section. The bottom staff (bass clef) provides accompaniment, starting with a forte (*f*) dynamic. The key signature is one sharp (F#).

206

solo

Measures 206-212. The top staff (treble clef) features a solo line starting with a mezzo-piano (*mp*) dynamic, followed by a forte (*f*) section. The bottom staff (bass clef) provides accompaniment, starting with a mezzo-piano (*mp*) dynamic. The key signature is one sharp (F#).

213

solo

Measures 213-218. The top staff (treble clef) features a solo line starting with a piano (*p*) dynamic, followed by a mezzo-forte (*mf*) section. The bottom staff (bass clef) provides accompaniment, starting with a piano (*p*) dynamic. The key signature is one sharp (F#).

solo

Measures 219-224. The top staff (treble clef) features a solo line. The bottom staff (bass clef) provides accompaniment, starting with a piano-piano (*pp*) dynamic. The key signature is one sharp (F#).

solo

217

pp *p* *mp*

221

225

ff *mp* *ff*

233

mf *f*

240

mf *f*

246

250

ff

254 pizz. *mp* arco *mf* 258

262 *f* *ff*

269

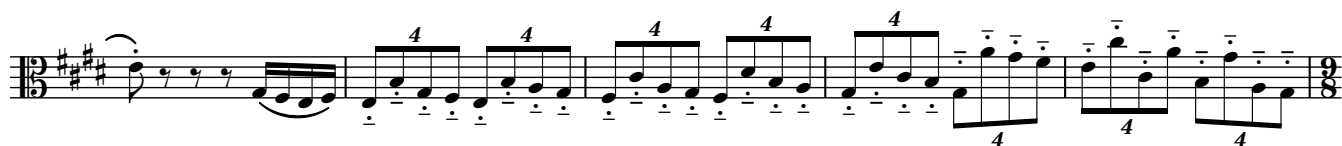
275 *poco rall.* **Allegretto** ♩. = 88 *pp* *p*

col legno 1 2 3 4

281 5 6 7 8 9 10

289 S. vln. *mf*

297 ord. *mf*



306



315

un poco tratt. ♩. = 76

320

rit. *accel.* . . . *a tempo* ♩. = 88

325

rit.

329

a tempo

S. vc.



S. vln.

337

*poco rit.*