

Oboe

Anton Reicha

6 Trios op.82/2

Bearbeitet für Flöte, Oboe und Violine

6 Trios op.82/3

Bearbeitet für Flöte, Oboe und Violine nach der Edition von Hartmut Lemmel

13. Allegro

Anton Reicha

6

11

16

21

27

33

38

44

50

f

p

p

f

p

f

p

calando

a tempo

tr

mf

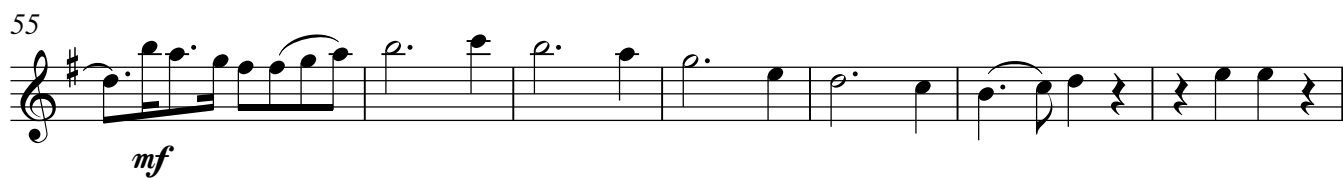
p

mf

p

Oboe

3



14. Menuetto. Allegro assai

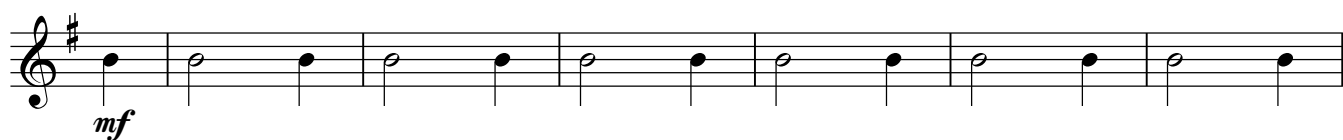
Oboe



16



Trio



31



37



45

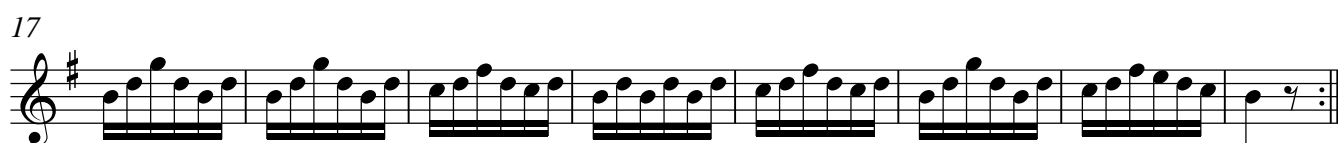
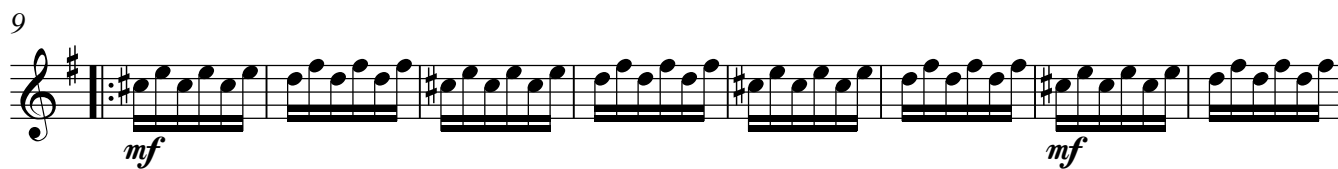


53

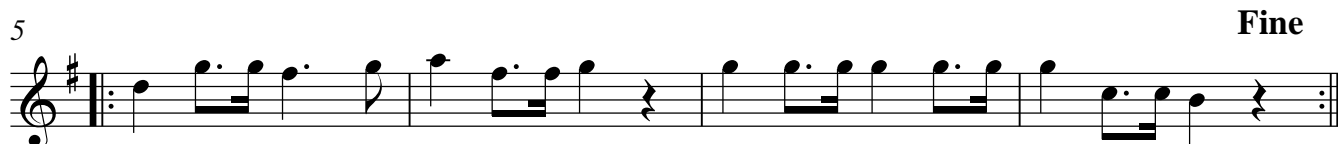


15. Tritonus. Allegretto

8



16. Movement de Marche



6

6

6

8

12

17 Allegro

27

35

41

46

Oboe

7

53

53

63

69

[illegible]

78

8

mf

85

91

96

18. Fuge. Allegro

18. Page: Ringio

mf

[illegible]

15

p


5

24

p

28



33 

38

Musical notation for measure 38 of 'The Rose Tree'. The staff is in treble clef with a key signature of one sharp (F#). The melody consists of the following notes: a whole rest, a quarter note G4, a quarter note A4, a half note B4 (with a sharp sign), a quarter note A4, a quarter note G4, a half note F#4, a whole rest, a whole rest, a whole rest, a quarter note E4, a quarter note D4, a quarter note C4 (with a sharp sign), a quarter rest, a quarter note B3, a quarter note A3, and a quarter note G3 (with a sharp sign).

46

46

51

51

