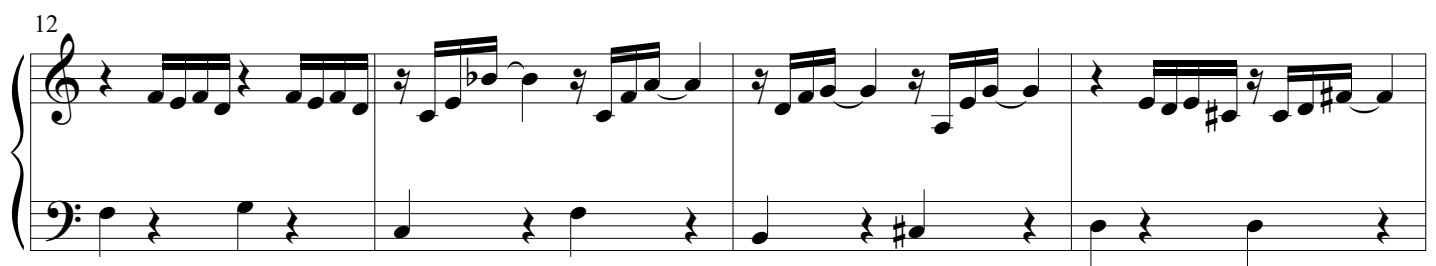
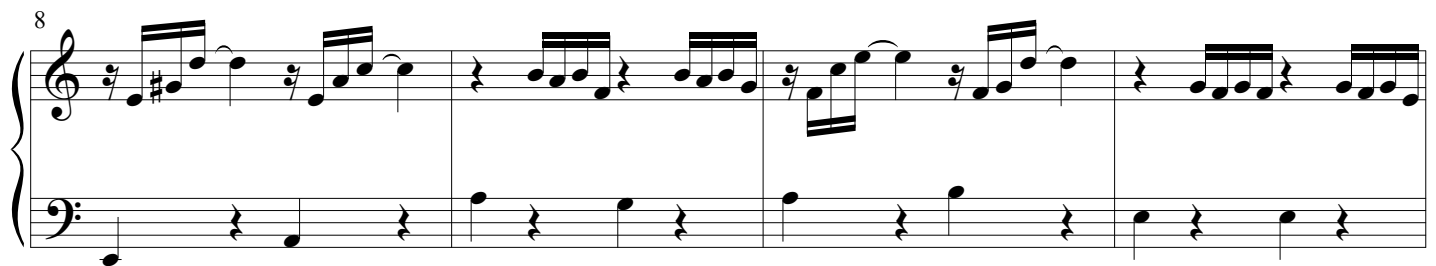
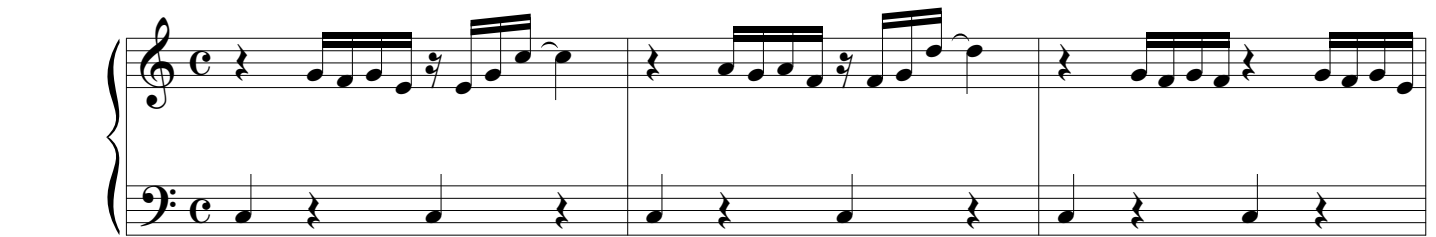


Praeludium et Fuga III

BWV 872

J. SEBASTIAN BACH

ARR. PETER H. BESSELING



19

Measures 19-21 of the Draeludium. The treble staff features eighth-note patterns, while the bass staff provides a simple harmonic accompaniment with quarter notes and rests.

22

Measures 22-25 of the Draeludium. Measures 22-24 continue the eighth-note patterns in the treble staff. Measure 25 is a double bar line. The system concludes with a 3/8 time signature change and a single eighth note in both staves.

26

Measures 26-35 of the Draeludium. The treble staff begins with a melodic line featuring slurs and a trill in measure 27. The bass staff provides a steady accompaniment with eighth-note patterns.

36

Measures 36-43 of the Draeludium. The treble staff continues the melodic development with various intervals and slurs. The bass staff maintains a consistent eighth-note accompaniment.

44

Measures 44-47 of the Draeludium. The treble staff features a melodic line with a trill in measure 45. The bass staff continues with eighth-note accompaniment. The system ends with a common time signature change.

The Fuga section begins with a common time signature. The treble staff starts with a whole rest, followed by a melodic line. The bass staff provides a rhythmic accompaniment with eighth notes and rests.

5

8

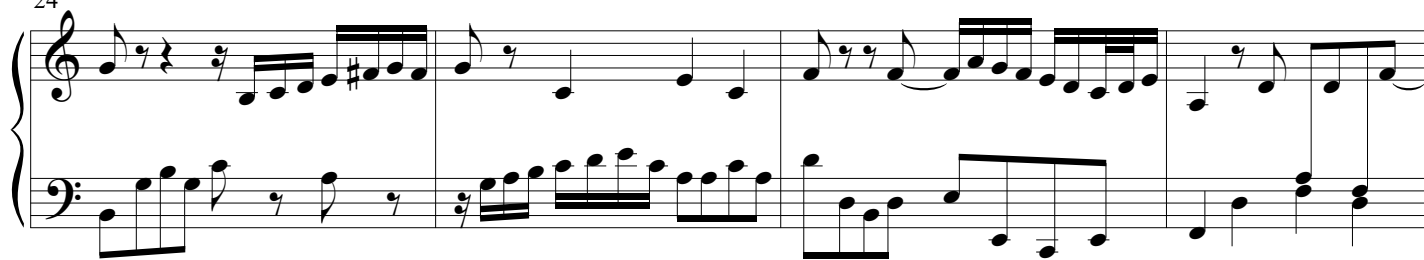
11

14

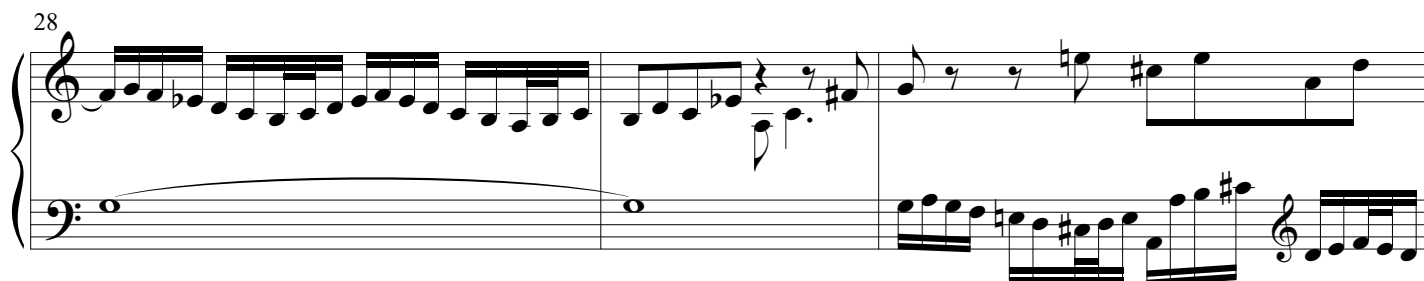
17

21

24



28



31



33

