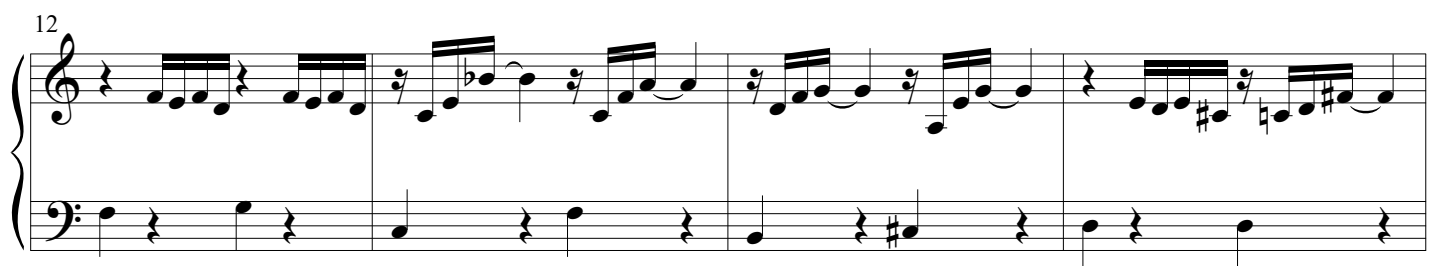
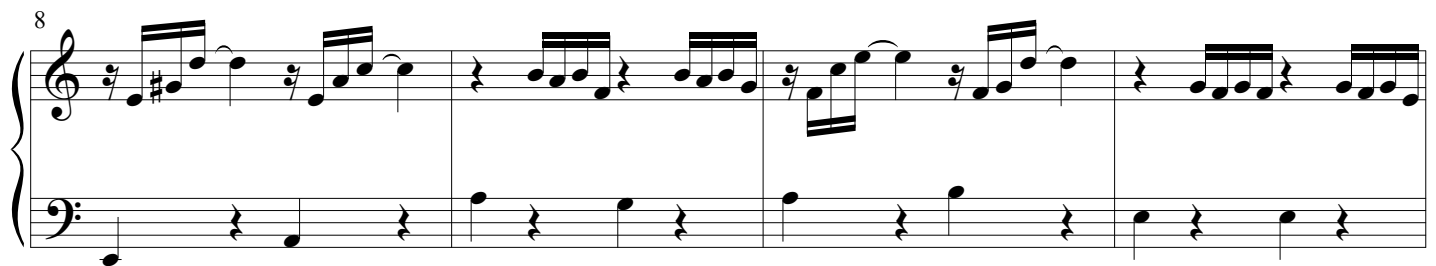
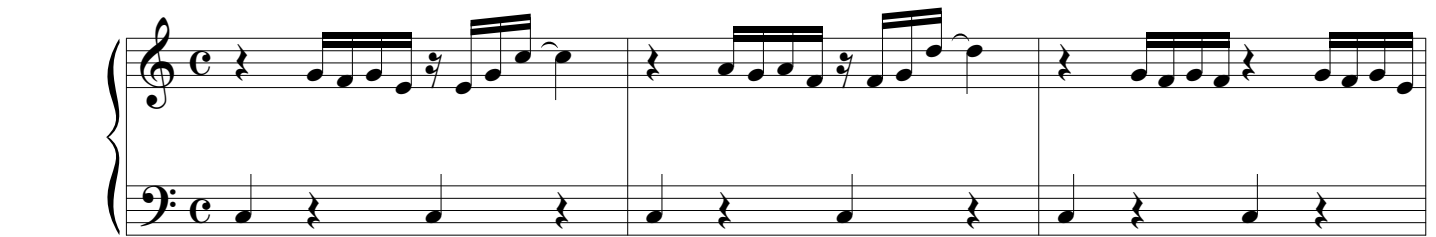


Praeludium et Fuga III

BWV 872

J. SEBASTIAN BACH

ARR. PETER H. BESSELING



19

Measures 19-21 of the Draeludium. The treble clef staff contains eighth-note patterns, while the bass clef staff has a simple accompaniment of quarter and eighth notes.

22

Measures 22-25 of the Draeludium. Measures 22-24 continue the eighth-note patterns in the treble clef. Measure 25 shows a change in the bass clef staff, featuring a half note and a quarter note.

26

Measures 26-35 of the Draeludium. Measures 26-30 feature a more complex eighth-note pattern in the treble clef. Measures 31-35 show a continuation of the eighth-note pattern in the treble clef, with a half note in the bass clef.

36

Measures 36-43 of the Draeludium. Measures 36-40 show a continuation of the eighth-note pattern in the treble clef. Measures 41-43 show a continuation of the eighth-note pattern in the treble clef, with a half note in the bass clef.

44

Measures 44-47 of the Draeludium. Measures 44-46 show a continuation of the eighth-note pattern in the treble clef. Measure 47 shows a continuation of the eighth-note pattern in the treble clef, with a half note in the bass clef.

Fuga

The Fuga section begins with a treble clef staff and a bass clef staff. The treble clef staff contains a half note, while the bass clef staff contains a half note. The section continues with eighth-note patterns in both staves.

5

8

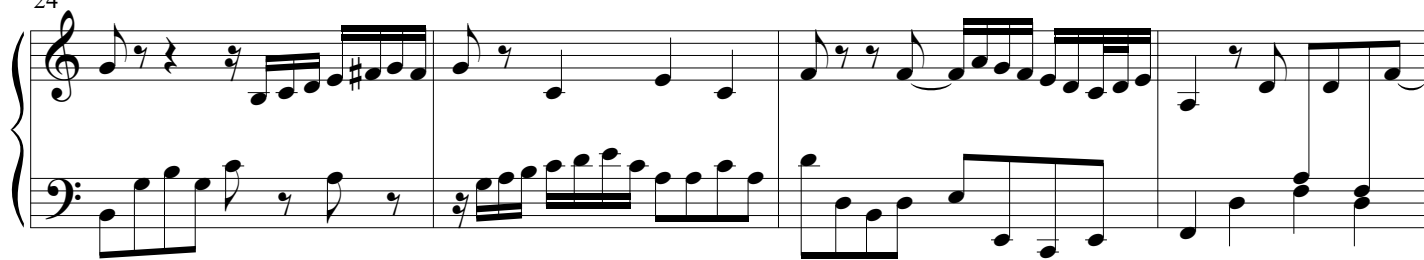
11

14

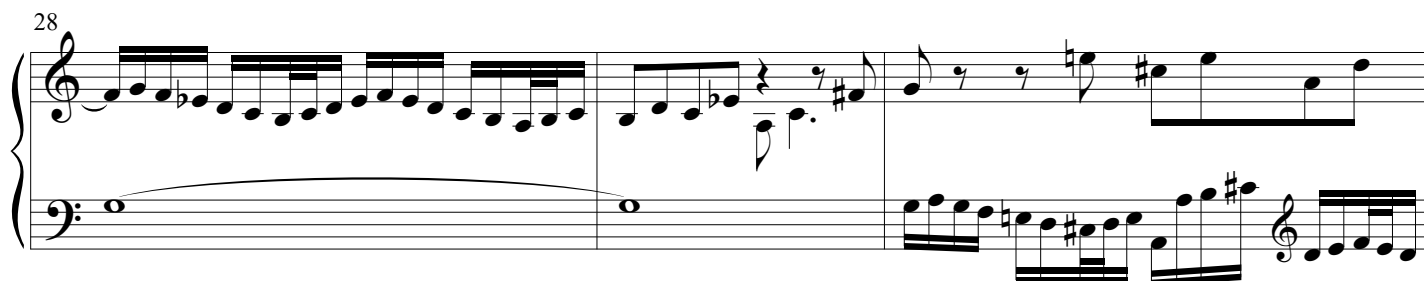
17

21

24



28



31



33

