

Flöte

Anton Reicha

6 Trios op.82/2

Bearbeitet für Flöte, Oboe und Violine

6 Trios op.82/3

Bearbeitet für Flöte, Oboe und Violine nach der Edition von Hartmut Lemmel

13. Allegro

Anton Reicha

13. Allegro

6

11

16

21

27

33

38

44

50

f

p

f

p

f

p

mf

p

mf

tr

calando

a tempo

55

61

66

72

77

83

89

95

101

106

111

f

mf

p

mf

f

tr

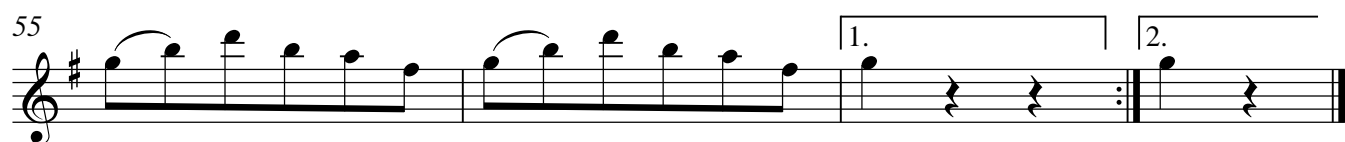
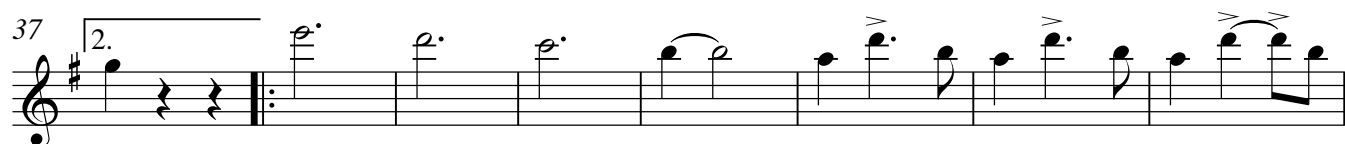
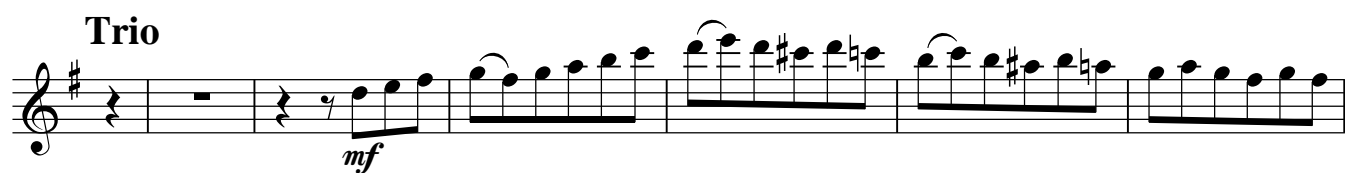
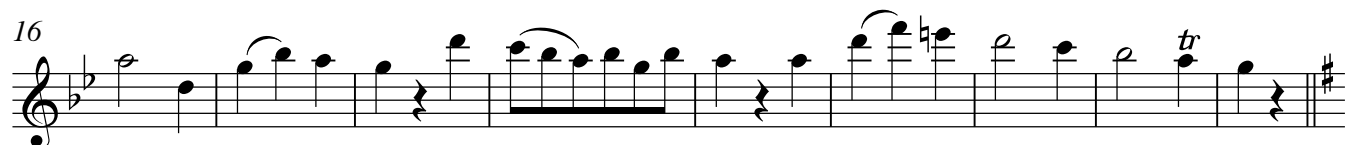
f

p

f

14. Menuetto. Allegro assai

Flöte



15. Tritonus. Allegretto

Measures 1-11 of the piece "15. Tritonus. Allegretto". The music is in G major (one sharp) and 3/8 time. It begins with a forte (*f*) dynamic and a piano (*p*) marking. The melody consists of eighth and sixteenth notes, with a repeat sign after measure 7. The dynamic changes to mezzo-forte (*mf*) at measure 8. The piece ends with a repeat sign and a fermata.

16. Movement de Marche

Measures 1-4 of the piece "16. Movement de Marche". The music is in G major (one sharp) and common time (C). It begins with a forte (*f*) dynamic. The melody features eighth and sixteenth notes, with a repeat sign after measure 3. The piece ends with a repeat sign and a fermata.

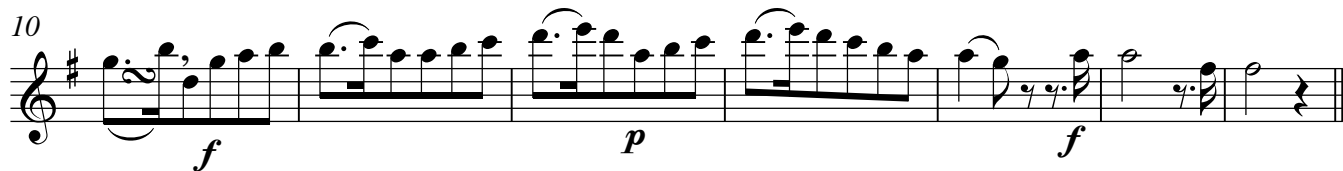
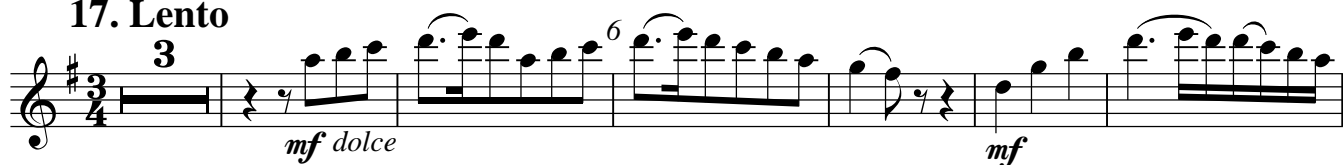
Measures 5-8 of the piece "16. Movement de Marche". The music continues in G major and common time. It begins with a mezzo-forte (*mf*) dynamic. The melody features eighth and sixteenth notes, with a repeat sign after measure 6. The piece ends with a repeat sign and a fermata, marked "Fine".

Measures 9-12 of the piece "16. Movement de Marche". The music continues in G major and common time. It begins with a mezzo-forte (*mf*) dynamic. The melody features eighth and sixteenth notes, with a repeat sign after measure 10. The piece ends with a repeat sign and a fermata, marked "2".

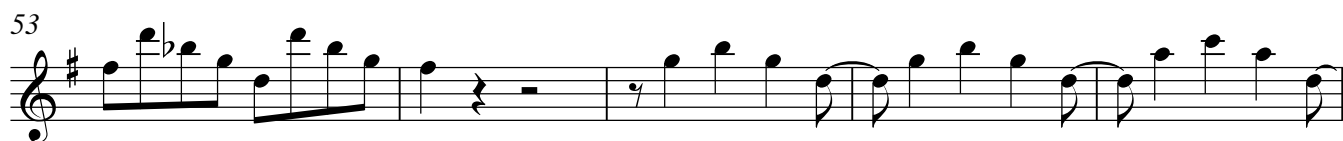
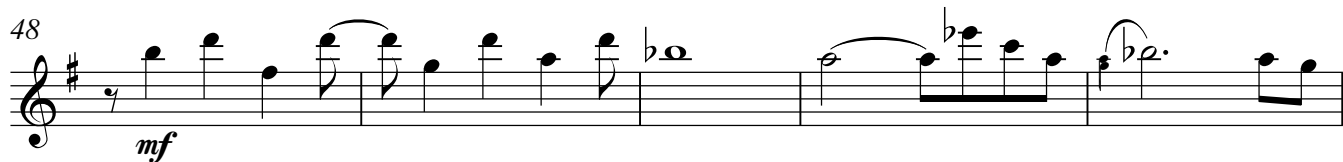
Measures 13-16 of the piece "16. Movement de Marche". The music continues in G major and common time. It begins with a mezzo-forte (*mf*) dynamic. The melody features eighth and sixteenth notes, with a repeat sign after measure 14. The piece ends with a repeat sign and a fermata, marked *p* (piano).

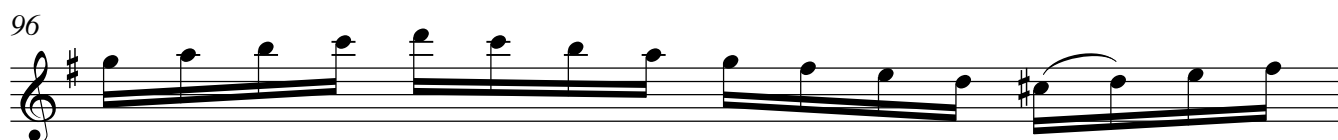
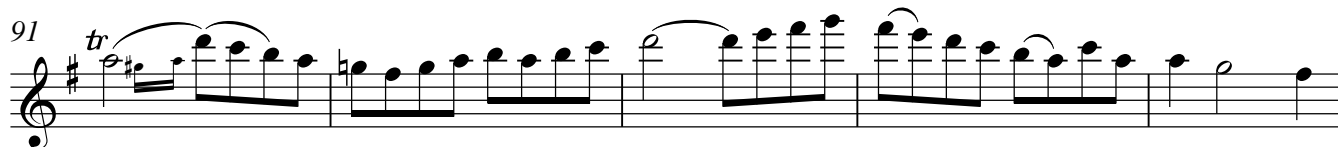
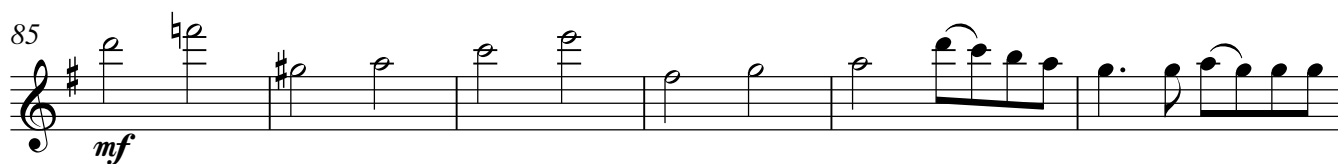
Measures 17-20 of the piece "16. Movement de Marche". The music continues in G major and common time. It begins with a mezzo-forte (*mf*) dynamic. The melody features eighth and sixteenth notes, with a repeat sign after measure 18. The piece ends with a repeat sign and a fermata, marked "D.C. al Fine".

17. Lento



17. Allegro





18. Fuge. Allegro

mf

6

12

p

17

22

28

33

38

43

47

51

