

**Viola**

# I

[illegible]

Tchaikovsky — Symphony No. 6 in B Minor, Op. 74 (Pathétique)

VIOLA

3

34 *p* *mp*

37 *cresc.* *f* *mf* *p* *pp* *saltando*

43 *unis.* *p*

47

50 *mp*

53 *pp*

56 *pp* *p* *p* *mp*

59 *mp*

61

Tchaikovsky — Symphony No. 6 in B Minor, Op. 74 (Pathétique)

VIOLA

4

63 *p* *C* *V*

65 *mp* *V* *Un poco animando* *f* *détaché* 1

69 *ff* *ff*

72 *Un poco più animato* *V*

75 *f* *mp* *Adagio* 4

84 *ritard. molto* *Vcl.* *Andante* *pp espress. incalzando con sord.* *mp > ppp* *V*

89 *VI. I.* *mf* *ritenuto* *mf*

97 *come prima* *p* *mf* *riten.* *mf*

101 *Moderato mosso saltando* *p*

104 *poco più f* *poco cresc.*

107 *mf* *dim.* *p* *E*

Tchaikovsky — Symphony No. 6 in B Minor, Op. 74 (Pathétique)

VIOLA

5

110

113

*poco più f* **F** *poco cresc.* *mf*

116

*dim.* *p*

119

*cresc.* *mf*

122

*poco cresc.* *f*

125

*riten.* **2** *senza sord.* *ff*

Andante  
*senza sord.* **V**

130

Fl. II *mf*

134

*incalzando* *ff* *riten.* *mf* *f*

138

*incalzando* *ff* *riten.* *mf* *f*

Moderato assai **G**

142

*mf* *mp* *p*

148

*rallentando* *pp* *dim.* *ppp*

**VIOLA**


*ritard. molto*

154 *div. ppp <p> ppp ppp <p> pppp ppppp pizz.*

arco

**Allegro vivo**

164 Musical score for piano, measures 164-167. Measure 164: Bass clef, key signature of one sharp (F#), quarter note F#4, quarter rest, quarter note Bb4, quarter rest, quarter note D5, quarter rest. Measure 165: Bass clef, key signature of one sharp (F#), quarter note F#4, quarter rest, quarter note Bb4, quarter rest, quarter note D5, quarter rest. Measure 166: Bass clef, key signature of one sharp (F#), quarter note F#4, quarter rest, quarter note Bb4, quarter rest, quarter note D5, quarter rest. Measure 167: Bass clef, key signature of one sharp (F#), quarter note F#4, quarter rest, quarter note Bb4, quarter rest, quarter note D5, quarter rest. Dynamics: sf, sf, ff, sf. Performance markings: V, 3, accents.

167 

## H *feroce*

171 **H** *feroce*

*ff*

[illegible]

176 

*come prima*

179 *come prima*

V

181  *sempre ff*

181 

Tchaikovsky — Symphony No. 6 in B Minor, Op. 74 (Pathétique)

VIOLA

7

187 *fff*

190

197 *K* *5*

205 *p* *V* *7* *1* *p* *1*

209 *più f* *mf* *cresc.* *f*

213 *ff*

216 *dim. un poco* *1*

220 *mf diminuendo* *p* *V*

224 *dim.* *pp*

228 *M* *V* *pp* *V* *pp*

233 *pp* *3*

Tchaikovsky — Symphony No. 6 in B Minor, Op. 74 (Pathétique)

8

VIOLA

240 *mf* *cresc.* *f cresc.*

243 *ff* *fff*

246 *f*

249 *sf* *sf* *sf* *sf* *ff*

253 *ff*

258 *pp* *cresc. molto* *ff* <sup>3</sup>

263 <sup>3</sup> <sup>3</sup> <sup>3</sup> <sup>3</sup> <sup>3</sup> <sup>3</sup> <sup>3</sup> <sup>3</sup>

265 <sup>3</sup> <sup>3</sup> <sup>3</sup> <sup>3</sup> <sup>3</sup> <sup>3</sup> <sup>3</sup> <sup>3</sup> <sup>3</sup> <sup>3</sup>

267 **P** *div.* *fff* *fff*

270 *unis.* *fff* <sup>3</sup> *ff* <sup>3</sup> <sup>3</sup>

277 **Q** *sempre ff* *fff* *div.* *V<sup>#</sup>*

## VIOLA

285 *div. largamente, forte possibile* **ff**

298 **R** **3** *Andante come prima* **ff** **fff** **p** **pp** *incalzando*

306 **p** **mp**

310 **div.** *poco cresc.* **riten.** **mf** **pp** **p** **p** *incalzando* **fff** **incalzando** **fff**

314 **riten.** **mf** **ff** **mf** **Tempo I**

320 **unis.** **riten.** **ff** **Meno 3** **f** **mf** **p** **pp**

329 **Animando rall.** **2** **1** **quasi Andante mosso** **adagio pizz.** **p**

338

343 **U** **7** **pp**

## VIOLA

## II

Allegro con grazia

*pizz.*  
*mf*

*div.* *unis.*  
*f* *mf*

*arco* *pizz.* *arco*  
*sempre mf*

1. 2. *div.* *arco*  
*mf*

*più f* *mf*

*f* *p.*

*pizz.*  
*mp* *mf* *mf*

*B*

*arco*  
*f* *mf*

*C*  
*mf* *f* *mf*

## VIOLA

11

47 *p* *f*

53 *pizz.* *mf* *f* *mf*

57 *D* *con dolcezza e flebile* *arco* *p*

63 *E* *sf* *p*

68 *pp* *mp* *f* *p*

74 *V*

80 *G* *sf* *f* *mf* *f* *mf* *f*

86 *mf* *f* *mf* *p* *mf*

91 *V* *div. V* *3* *p* *mf* *p* *mf* *1*

96 *H unis. pizz.* *mf*

101 *div. unis.* *f* *mf* *I*

106 *arco* *pizz. arco* *div.* *mf sempre*

Tchaikovsky — Symphony No. 6 in B Minor, Op. 74 (Pathétique)

12

VIOLA

112 *mf* *pizz.* *più f* *mf*

117 *f* *p* *K* *V*

122 *V*

127 *pizz.* *p* *mf* *mf*

131 *L*

135 *f* *arco* *mf* *mf*

139 *M* *f* *mf* *p* *f*

145

150 *pizz.* *N* *1* *arco* *1* *1*

157 *p* *mf* *p* *mf*

163 *p* *poco cresc.* *mf* *dim.* *mp* *p*

171 *P* *1* *V* *1* *V* *pizz.* *pp* *pp*

[illegible]

Tchaikovsky — Symphony No. 6 in B Minor, Op. 74 (Pathétique)

14

VIOLA

31 **D** *f* *f* *mf* *mp*

35 *p* *p* *p* *1* *1*

40 *pizz.* *mf* *pizz.* *mf* *E* *1* *(12/8)* *1* *(12/8)*

46 *arco* *f* *arco* *f* *V* *ff* *ff*

50 *F* *V* *pp* *cresc.* *pp* *cresc.*

54 *unis.* *mp* *f*

57 *pp* *mp*

60 *G* *f* *p cresc. poco a poco*

**VIOLA**

63

66

69

72

80

84

88

93

98

103

107

112

## 16

## M

M

119 *p* *p* *mf* *f*

123 *pp* *un poco cresc.*

126 *f*

N

130

131 *f*

O

139 *div. mf* *p* *mf* *p*

142 *p* *p* *p* *p*

146 *p* *mp* *pizz.* *mf* *mp* *mf*

Tchaikovsky — Symphony No. 6 in B Minor, Op. 74 (Pathétique)

VIOLA

17

152 *arco* *mp* *arco* *p* *dim.* *pp*

155 *mf* *mf* *p* *p*

158 *1* *Q* *p* *p*

162 *1* *p* *poco cresc.* *p* *poco cresc.*

166 *1* *R* *mp* *f* *f*

170 *f* *mf* *mp*

Detailed description of the musical score: The score is for the Viola part of Tchaikovsky's Symphony No. 6. It spans measures 152 to 170. The key signature is B minor (two sharps). The time signature is 3/4. The music consists of continuous eighth-note patterns, often in pairs between the two staves. Measure 152 starts with a piano (p) dynamic and includes the instruction 'arco'. Measures 153-155 show a crescendo from p to mf. Measures 156-158 show a decrescendo from mf to p. Measure 159 introduces a new section marked '1' and 'Q', starting at p. Measures 160-162 continue the p dynamic. Measure 163 begins a 'poco cresc.' section. Measures 164-166 continue the crescendo. Measure 167 is marked with a rehearsal sign '1' and 'R', starting at mp. Measures 168-170 show a crescendo from mp to f, with a 'V' (Violoncello) entry in measure 168. The final measure (170) returns to mp.

## 18

## 18

173

176

181

198

192

198

Tchaikovsky — Symphony No. 6 in B Minor, Op. 74 (Pathétique)

VIOLA

19

206 *mp* *mf poco a poco cresc.* *ff* **V**

213 *non div.* *fff* **W**

218 *fff* **X**

221 *sempre fff* **V**

224 **V**

227 **Y** *fff*

231

236 **Z**

240

245 **Aa**

250

Tchaikovsky — Symphony No. 6 in B Minor, Op. 74 (Pathétique)

20

VIOLA

255 **Bb** *fff* *pizz.* *f* *ff*

259 *arco* *fff* *pizz.* *f* *ff*

263 *arco* *fff* *pizz.* *f* *ff*

267 **Cc** *arco* *fff*

272 **Dd** *fff*

279 **Ee** *fff*

285 **Ff**

289

293

297 **Gg**

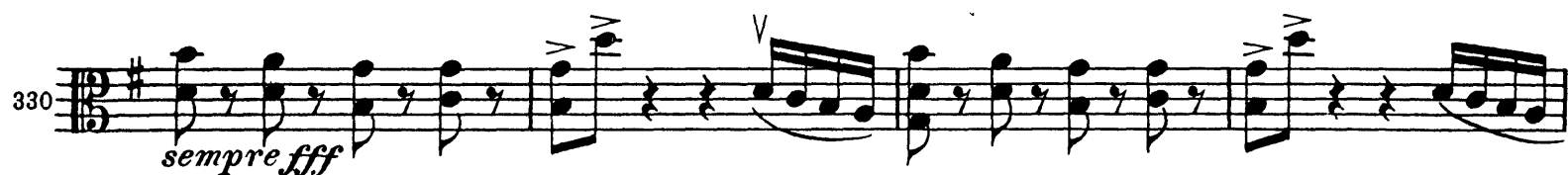
301 *sempre fff*

Tchaikovsky — Symphony No. 6 in B Minor, Op. 74 (Pathétique)

VIOLA

21

Hh



## VIOLA

## IV

## Finale

## Adagio lamentoso

Musical score for Viola, measures 1 to 59. The score is in B minor (two sharps) and 3/4 time. It includes various dynamics, articulations, and tempo markings.

**Measures 1-5:** *Adagio lamentoso*. Dynamics: *f* *largamente*, *mf*, *p*, *f*, *mf*, *p*.

**Measures 6-12:** *affrettando*. Dynamics: *mp*, *mf*, *cresc.*, *ff*. Marking: *rall.*.

**Measures 13-19:** *Andante*. Dynamics: *mf*, *f*, *mf*, *p*, *pp*, *ppp*.

**Measures 20-24:** *Adagio poco meno che prima*. Dynamics: *f*, *mf*, *f*, *mf*, *p*.

**Measures 25-36:** *Andante*. Dynamics: *pp*, *pp*. Markings: *B*, *7*.

**Measures 37-42:** *Andante*. Dynamics: *pp*, *cresc.*. Marking: *C con lenezza e devozione*.

**Measures 43-50:** *poco animando*. Dynamics: *mf*, *p*. Marking: *ritenuto Tempo I*.

**Measures 51-58:** *D poco animando*. Dynamics: *cresc.*, *mf*. Marking: *riten. Tempo I*.

**Measures 59-64:** *poco animando*. Dynamics: *cresc.*, *f*. Marking: *riten. Tempo I*.

The score concludes with a double bar line at measure 64.

## VIOLA

23

*animando*

67 *cresc.* *ff* *fff*

*cresc.* *ff* *fff*

*Più mosso*

73 *sempre fff* *stringendo*

*sempre fff* *stringendo*

*Vivace*

78

*unis.* *Andante*

80 *ff*

84 *f* *mf* *p* *p*

*G Andante non tanto*

90 *ff* *f* *ff* *f* *p*

96 *pp* *mf cresc.* *f* *ff* *mf*

*H*

103 *mf* *ff* *f* *ff*

*stringendo molto*

155