

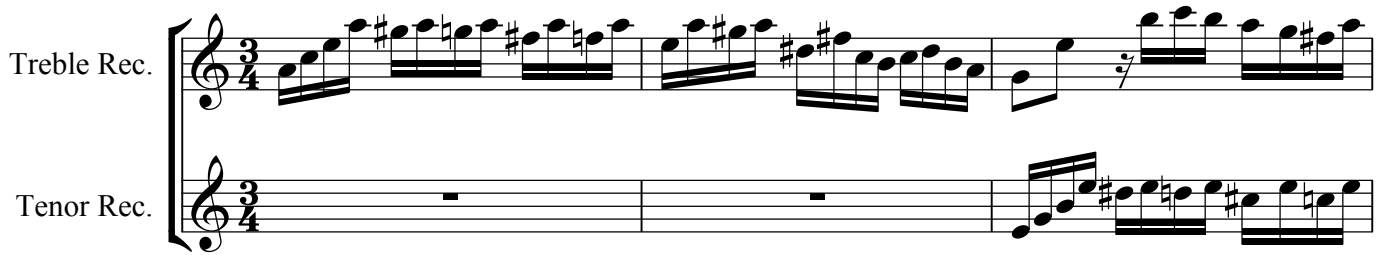
Fuga à 2

from Das Wohltemperierte Clavier, Preludium und Fuge in e, BWV 855

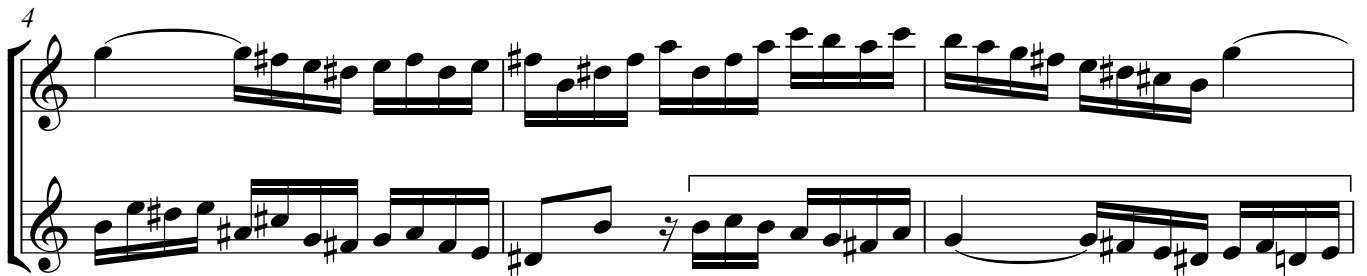
J.S. Bach (1685 Eisenach - 1750 Leipzig)

Treble Rec.

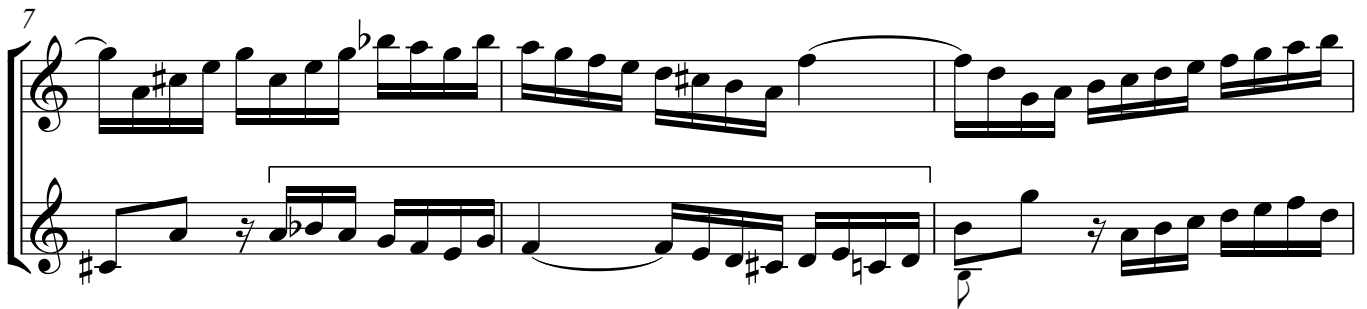
Tenor Rec.



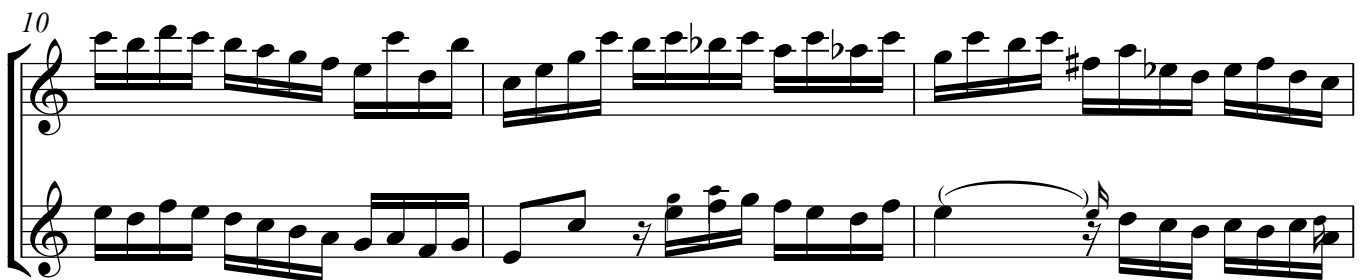
4



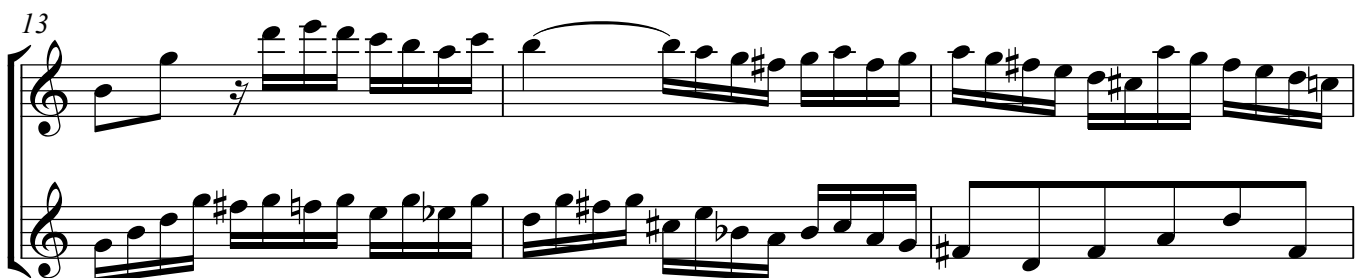
7

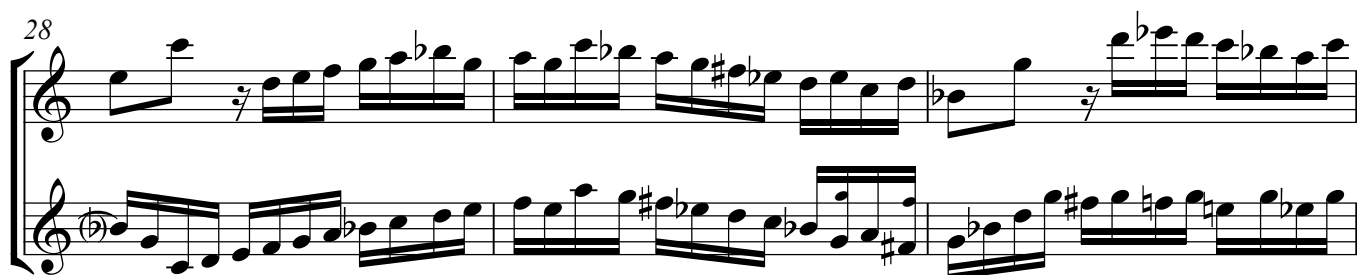
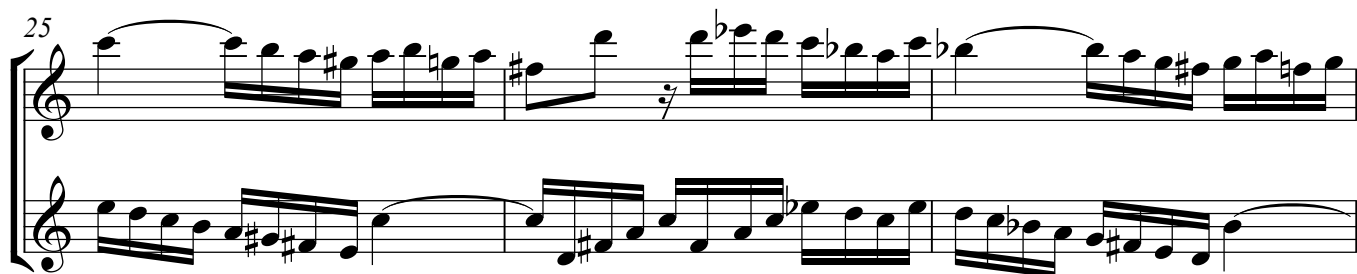
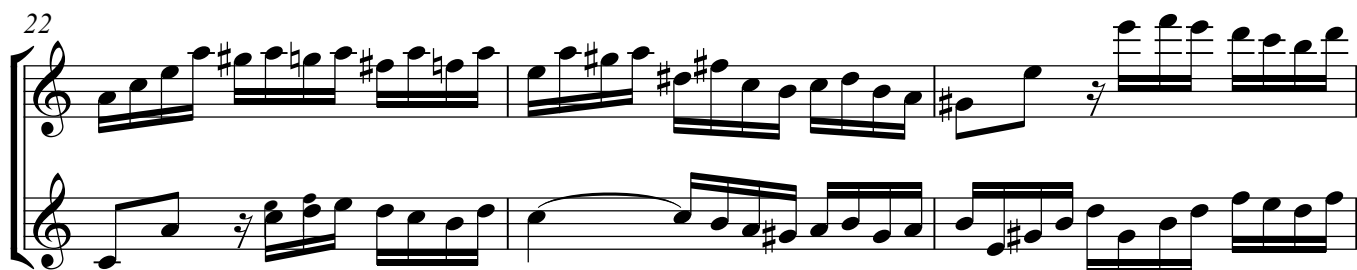
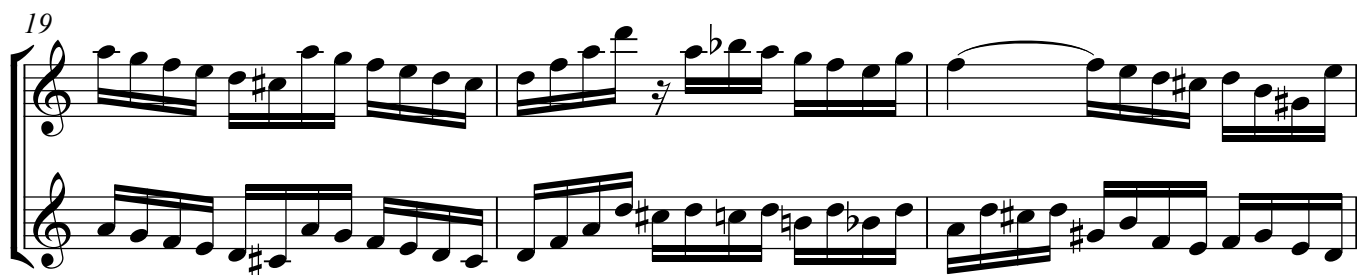
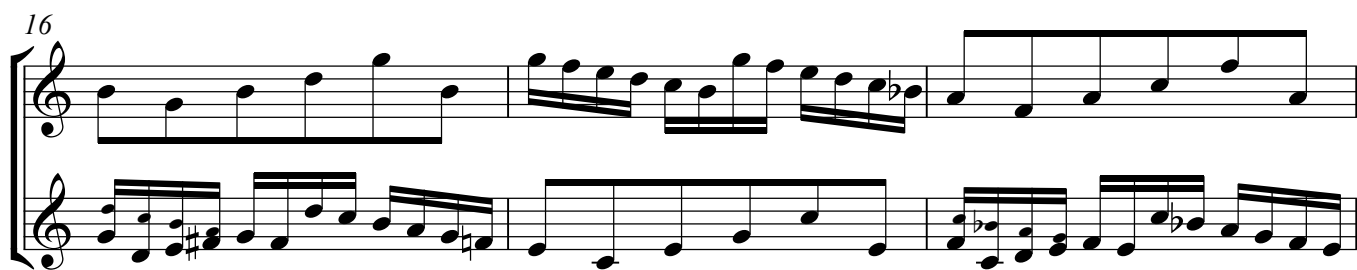


10



13





33

35

38

40

I transposed the piece from e flat up to a flat, and the lower staff one octave more, except at the places with brackets above it. To prevent the inversion of chords and some clashing of seconds where the original had ninths I had to change some other notes as well; I indicated the original melody lines by cue notes. I transposed the upper part an octave up in two places, indicated by brackets beneath the staff. The preceding Preludium is mostly in three parts or more, so I did not arrange it.