

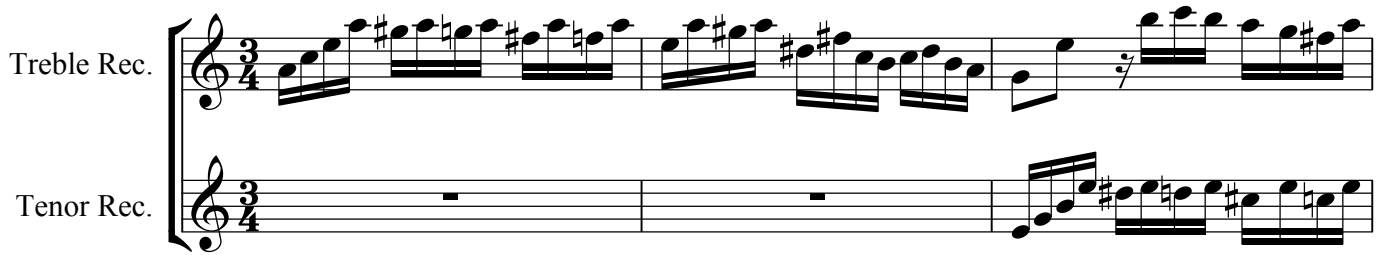
Fuga à 2

from Das Wohltemperierte Clavier, Preludium und Fuge in e, BWV 855

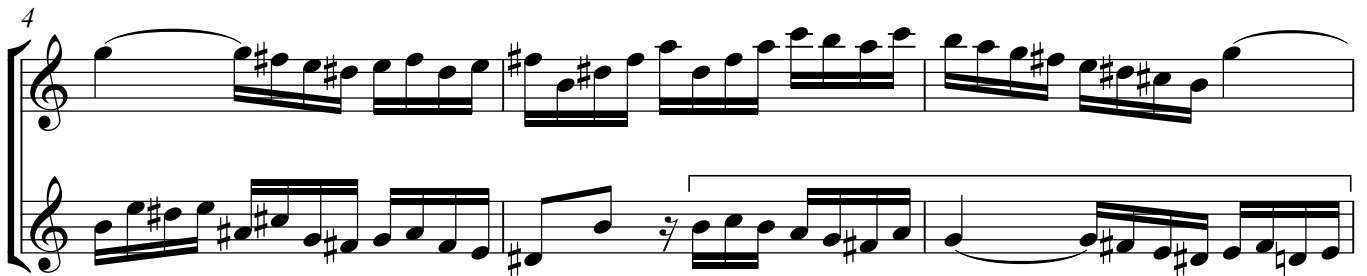
J.S. Bach (1685 Eisenach - 1750 Leipzig)

Treble Rec.

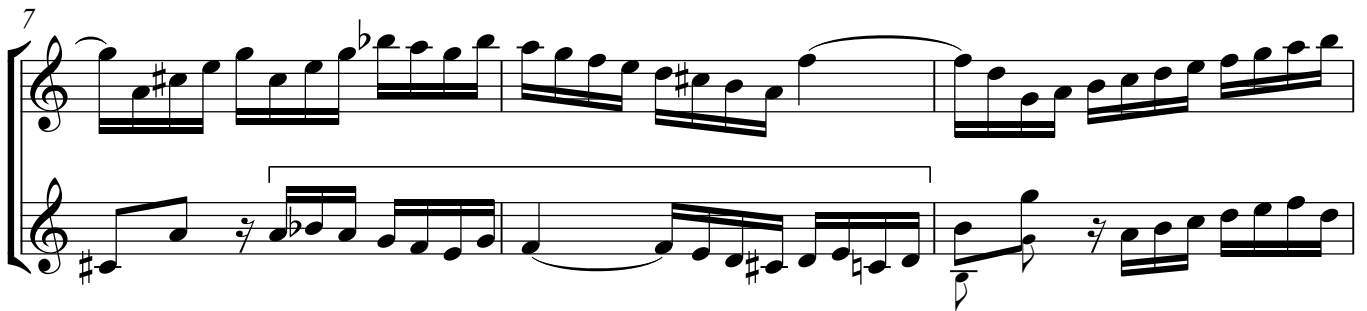
Tenor Rec.



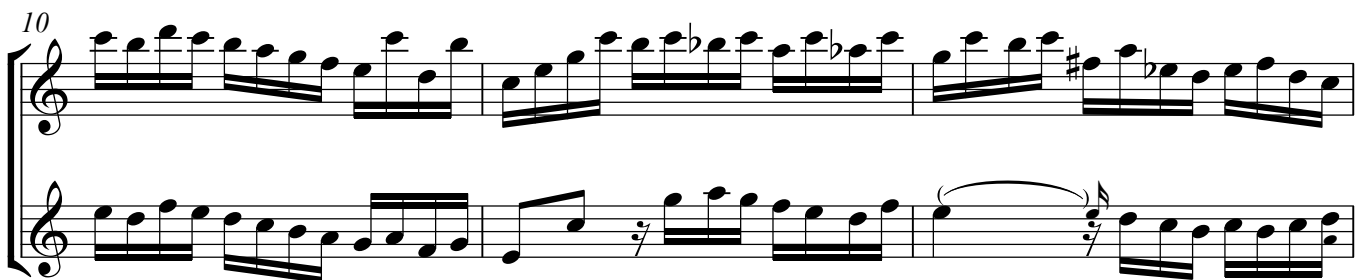
4



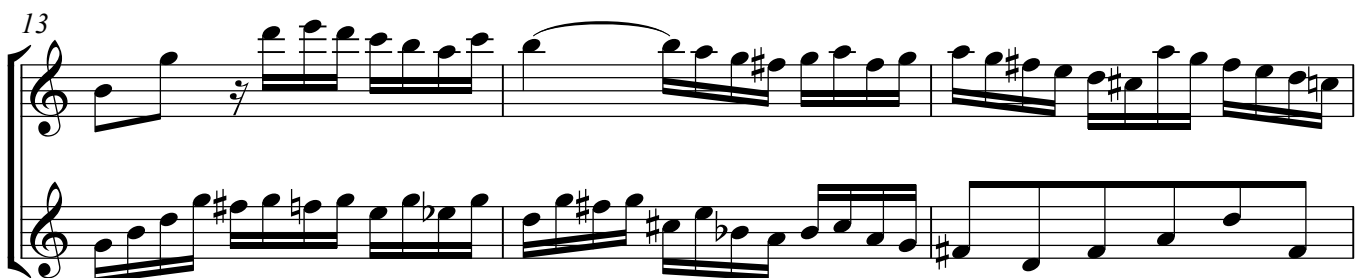
7

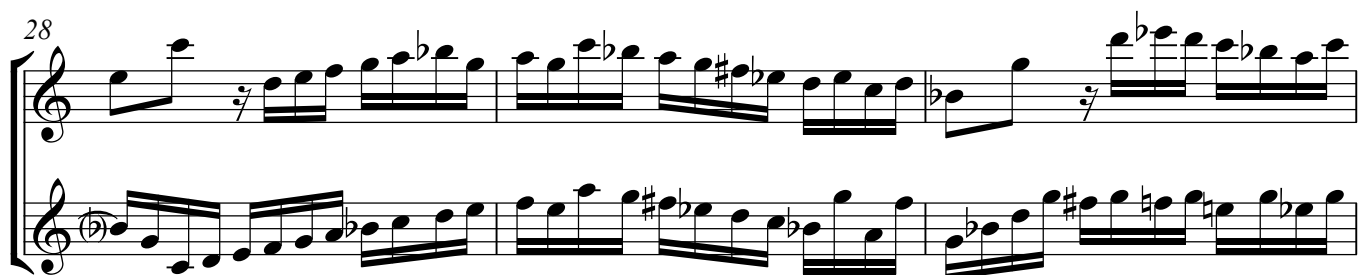
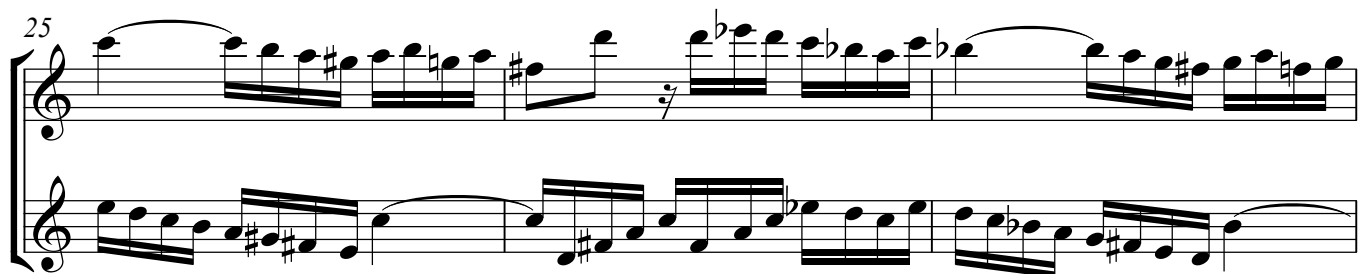
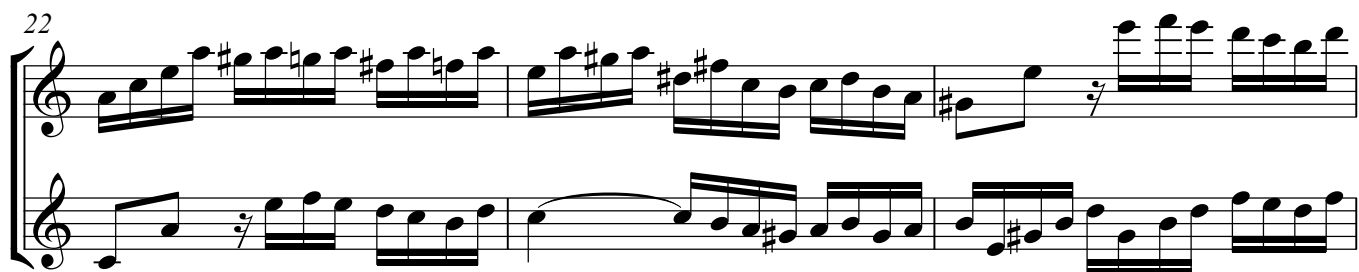
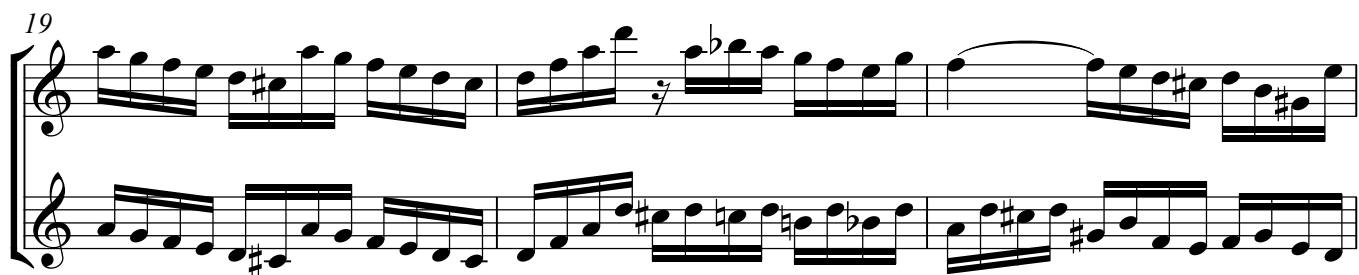
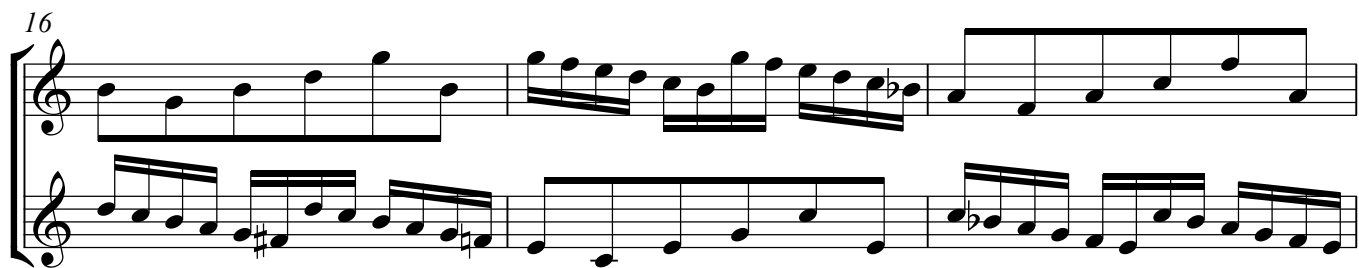


10



13





33

35

38

40

I transposed the piece from e flat up to a flat, and the lower staff one octave more, except at the places with brackets above it, and the notes on the first beat of bar 9 transposed two octaves up.

I transposed the upper part an octave up in two places, indicated by brackets beneath the staff.

I suggest an a' for the last note of bar 12 if you dislike two subsequent clashes of seconds and do not mind to ignore the inversion of counterpoint.

The preceding Preludium is mostly in three parts or more, so I did not arrange it.