

# Ottorino Respighi Fountains of Rome

## FLAUTO 1°

### La fontana di Valle Giulia all'alba.

Andante mosso

*p*

*p*

*pp*

*poco rit.*

*Poco più mosso*

*ppp*

*Tempo I°*

*pp*

*Solo*

*p dolce*

*rall.*

FLAUTO 1.

La fontana del Tritone al mattino.

**Vivo**

(Corni) *ff* 3

4

(Corni) *ff* 3

(Corni) *ff* 3

*fff*

*dim.*

**Un poco meno**  
(Allegretto)

1 2

*p legg. scherz.*

5 **Più vivo**  
(gaiamente)

4

*animando*

*mf* 3 *p* 3 *cres.* *f*

6

*p* *f* *f* 3

1 2 3 4

*f* 5 3 3 3

8 8 8 8

7 **Più vivo ancora**

*f* *cres.* *p legg.*

*string.*

*p* *cres.*

8

*f* *cres.* *fff*

*poco rit:.....*

FLAUTO 1°

*a Tempo*  
(molto vivo)

*ff* *dim.* *Un poco rall.*

9

La fontana di Trevi al meriggio.

**10** All<sup>o</sup> moderato **11** All<sup>o</sup> vivace

*f* *ff* *ff*

8

8

8

8

8

8

8

8

Più vivace (In uno)

**14** *ff* *Ritmo di 3 battute* **3**

V.S.

FLAUTO 1°

*più f*

**15**

*fff* (Ritmo di 4 battute)

*Largamente*

*fff*

*dim.*

**16**

*f* *dim.*

*mf* *dim.*

*p*

**17** Calmo

*dim.*

*pp*

*dim.*

**18** La fontana di Villa Medici al tramonto.  
Andante  
*Solo*

*p espress.*

*p*

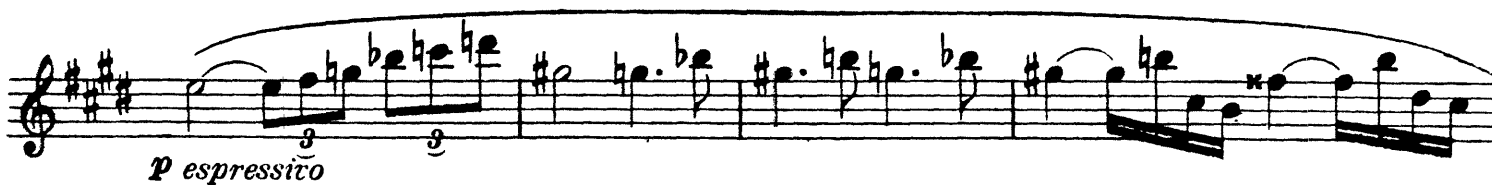
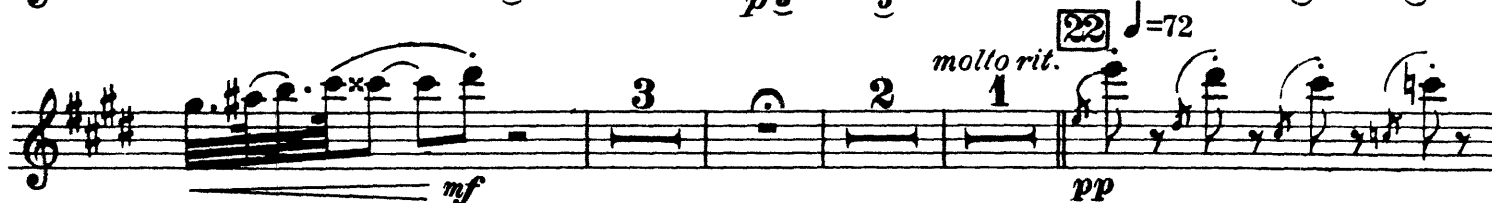
FLAUTO 1°

5

[19] Meno mosso



[21] And<sup>te</sup> come prima



[23]



# Ottorino Respighi Fountains of Rome

## FLAUTO 2°

### La fontana di Valle Giulia all'alba.

Andante mosso

*p*

*pp*

*ppp*

*pp*

Tempo I°

### La fontana del Tritone al mattino.

Vivo

*ff*

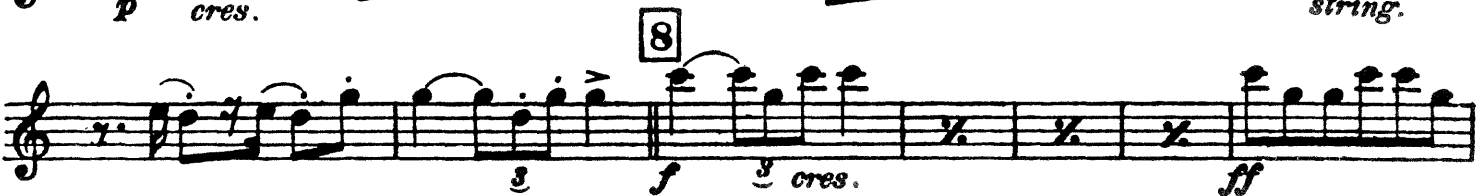
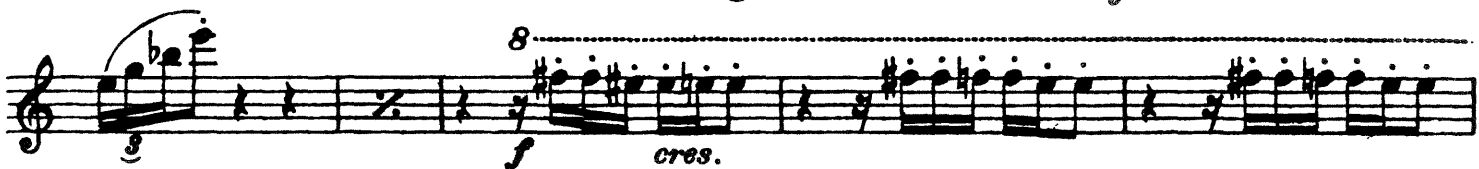
*ff*

*ff*

*dim.*

FLAUTO 2°

Un poco meno (*Allegretto*)



FLAUTO 2°

8

La fontana di Trevi al meriggio.

**10** Allegro moderato

**11** All<sup>o</sup> vivace

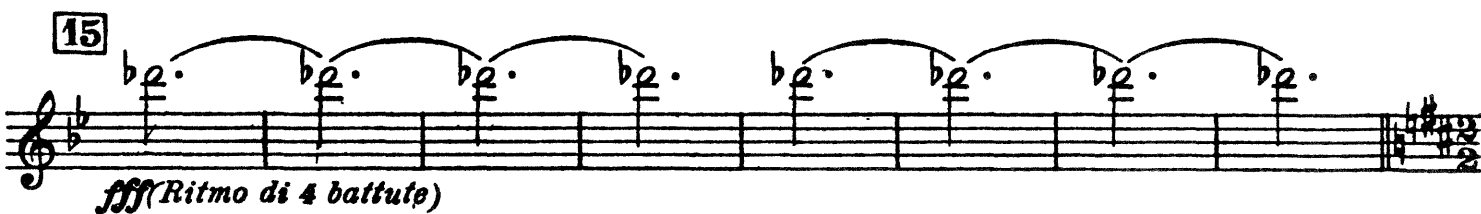
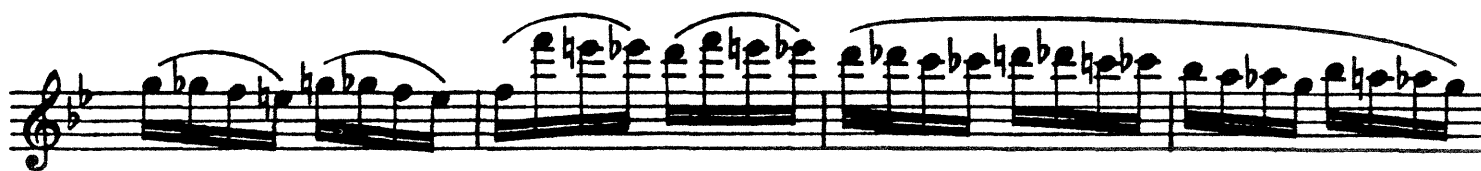
The musical score for Flauto 2° is written on a single staff. It begins with a treble clef and a key signature of two sharps (F# and C#). The time signature is 2/4. The score is divided into four measures, each containing a measure number in a box. Measure 10 is marked 'Allegro moderato' and 'f'. Measure 11 is marked 'All<sup>o</sup> vivace' and 'ff'. Measure 12 is marked 'Piu vivace (in uno)'. Measure 13 is also marked 'Piu vivace (in uno)'. The music features a series of ascending and descending melodic lines, often with triplets and sixteenth notes. The dynamics range from f to ff. The score ends with a final measure marked '3'.

**14** Più vivace (in uno)

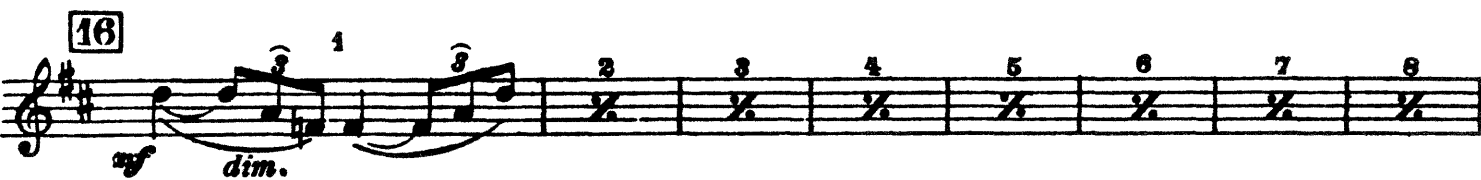
The musical score for Flauto 2° is written on a single staff. It begins with a treble clef and a key signature of two sharps (F# and C#). The time signature is 2/4. The score is divided into four measures, each containing a measure number in a box. Measure 10 is marked 'Allegro moderato' and 'f'. Measure 11 is marked 'All<sup>o</sup> vivace' and 'ff'. Measure 12 is marked 'Piu vivace (in uno)'. Measure 13 is also marked 'Piu vivace (in uno)'. The music features a series of ascending and descending melodic lines, often with triplets and sixteenth notes. The dynamics range from f to ff. The score ends with a final measure marked '3'.



FLAUTO 2°



Largamente



19 Calmo

FLAUTO 2°

5

Two staves of musical notation. The first staff contains measures 1 through 5, with a *pp* dynamic marking at the beginning and a *dim.* marking at the end. The second staff contains measures 6 through 8, with a *dim.* marking at the end. The music is in treble clef with a key signature of three sharps (F#, C#, G#).

La fontana di Villa Medici al tramonto.

Two staves of musical notation. The first staff is marked with a box containing the number 18 and the tempo *Andante*. It contains measures 1 through 4, with a *p* dynamic marking and a *dim.* marking. The second staff is marked with a box containing the number 19 and the tempo *Meno mosso*. It contains measures 5 through 8, with a *p* dynamic marking and a *dim.* marking. The music is in treble clef with a key signature of three sharps.

Two staves of musical notation. The first staff contains measures 1 through 4, with a *ppp* dynamic marking. The second staff contains measures 5 through 8, with a *ppp* dynamic marking. The music is in treble clef with a key signature of three sharps.

Two staves of musical notation. The first staff contains measures 1 through 4, with a *ppp* dynamic marking. The second staff contains measures 5 through 8, with a *ppp* dynamic marking. The music is in treble clef with a key signature of three sharps.

Two staves of musical notation. The first staff is marked with a box containing the number 20 and the tempo *Andante*. It contains measures 1 through 4, with a *p espressivo* dynamic marking. The second staff is marked with a box containing the number 21 and the tempo *Meno mosso*. It contains measures 5 through 8, with a *pp* dynamic marking. The music is in treble clef with a key signature of three sharps.

Two staves of musical notation. The first staff contains measures 1 through 4, with a *pp* dynamic marking. The second staff contains measures 5 through 8, with a *mf* dynamic marking and a *dim.* marking. The music is in treble clef with a key signature of three sharps.

Two staves of musical notation. The first staff is marked with a box containing the number 22 and the tempo *Andante come prima*. It contains measures 1 through 4, with a *molto rit.* marking. The second staff is marked with a box containing the number 23 and the tempo *Meno mosso*. It contains measures 5 through 8, with a *p espressivo* dynamic marking. The music is in treble clef with a key signature of three sharps.

Two staves of musical notation. The first staff contains measures 1 through 4, with a *p* dynamic marking. The second staff contains measures 5 through 8, with a *più p* dynamic marking. The music is in treble clef with a key signature of three sharps.

Two staves of musical notation. The first staff contains measures 1 through 4, with a *p* dynamic marking. The second staff contains measures 5 through 8, with a *più p* dynamic marking. The music is in treble clef with a key signature of three sharps.

# Ottorino Respighi Fountains of Rome

## OTTAVINO

La fontana di Valle Giulia all'alba.

Andante mosso

13 1 5

(Fl) p

5 3

2 poco rit.

Poco più mosso

3 9 10 rall.

Tempo I?

ppp

La fontana del Tritone al mattino.

Vivo

1 3 1 3

(Corni) ff

(Corni) ff

4

ff

dim.

Un poco meno  
(Allegretto)

3 10

5 Più vivo  
(gaiamente)

1 3 1 3 4 animando

p legg.



# OTTAVINO

3

La fontana di Villa Medici al tramonto.

**18** Andante

**19** Meno mosso

**20** Andante come prima

**21** Solo

**22** molto rit.

**23**