

COLLECTION MUSICALE EN FORMAT NUMÉRIQUE
MUSIQUE ANCIENNE POUR ENSEMBLE INSTRUMENTAL

Nicolas Métru (1610-1668)
**Fantaisies à deux parties
pour les violes [25-36]**



Source :

Fantaisies à deux parties pour les violles -

Paris, Robert Ballard, 1642.

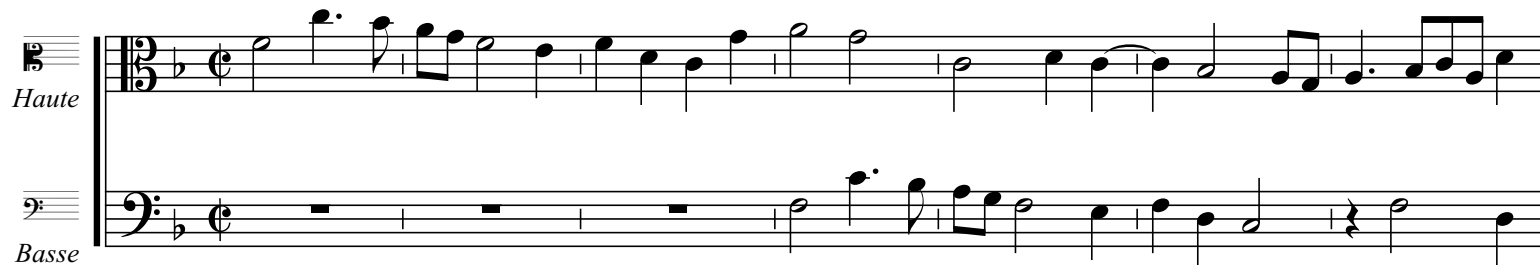
Bibliothèque Sainte-Geneviève, Paris [Rés. Vm 111.

RISM [M 2464.

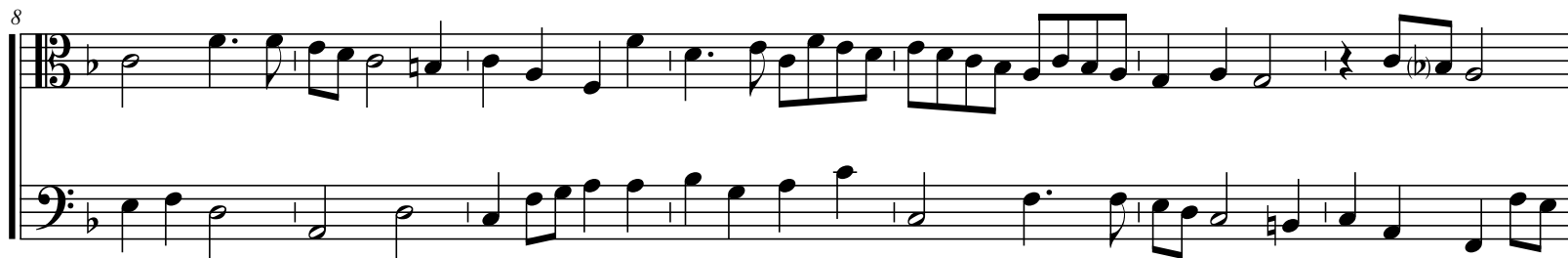
Vingt-cinquesme fantaisie

Haute

Basse



8



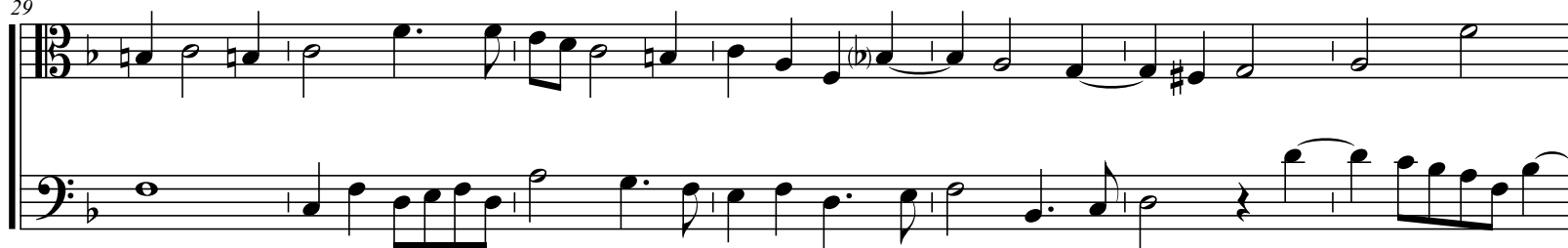
15



22



29



36



43

Measures 43-49 of a musical score. The system consists of two staves. The upper staff is in treble clef with a key signature of one flat (B-flat). It contains a melodic line with various note values including eighth, quarter, and half notes, some with slurs and ties. The lower staff is in bass clef with the same key signature, providing a harmonic accompaniment with similar note values and slurs. The system concludes with a double bar line.

50

Measures 50-56 of a musical score. The system consists of two staves. The upper staff is in treble clef with a key signature of one flat (B-flat). It contains a melodic line with various note values including eighth, quarter, and half notes, some with slurs and ties. The lower staff is in bass clef with the same key signature, providing a harmonic accompaniment with similar note values and slurs. The system concludes with a double bar line.

57

Measures 57-63 of a musical score. The system consists of two staves. The upper staff is in treble clef with a key signature of one flat (B-flat). It contains a melodic line with various note values including eighth, quarter, and half notes, some with slurs and ties. The lower staff is in bass clef with the same key signature, providing a harmonic accompaniment with similar note values and slurs. The system concludes with a double bar line.

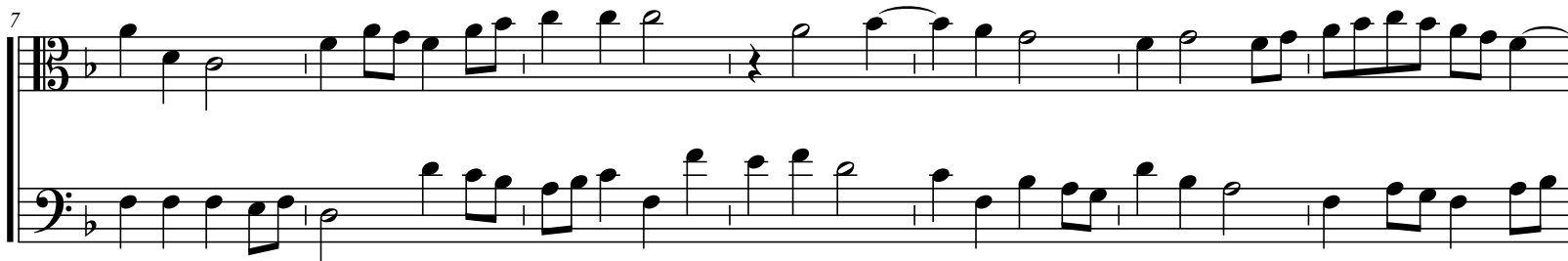
Vingt-sixiesme fantaisie

Haute

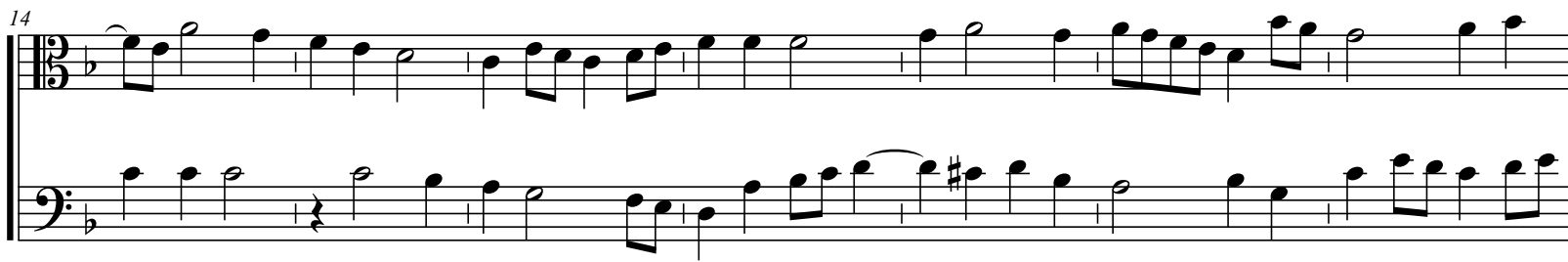
Basse



7



14



21

Measures 21-27 of a musical score. The system consists of two staves. The upper staff is in treble clef with a key signature of one flat (B-flat). It contains a melodic line with eighth and sixteenth notes, including a triplet of eighth notes in measure 24. The lower staff is in bass clef with the same key signature, providing a harmonic accompaniment with eighth and sixteenth notes.

28

Measures 28-34 of a musical score. The system consists of two staves. The upper staff is in treble clef with a key signature of one flat. It features a melodic line with eighth notes and a half note in measure 34. The lower staff is in bass clef with the same key signature, featuring a more active accompaniment with many sixteenth notes.

35

Measures 35-41 of a musical score. The system consists of two staves. The upper staff is in treble clef with a key signature of one flat. It contains a melodic line with eighth notes and a half note in measure 41. The lower staff is in bass clef with the same key signature, featuring a more active accompaniment with many sixteenth notes.

41

Measures 41-47 of a musical score. The system consists of two staves. The top staff is in treble clef with a key signature of one flat (B-flat). It contains a melodic line with eighth and sixteenth notes, including a triplet in measure 44. The bottom staff is in bass clef with a key signature of one flat. It contains a bass line with eighth and sixteenth notes, including a triplet in measure 44. The system ends with a double bar line.

48

Measures 48-54 of a musical score. The system consists of two staves. The top staff is in treble clef with a key signature of one flat. It contains a melodic line with eighth and sixteenth notes, including a triplet in measure 51. The bottom staff is in bass clef with a key signature of one flat. It contains a bass line with eighth and sixteenth notes, including a triplet in measure 51. The system ends with a double bar line.

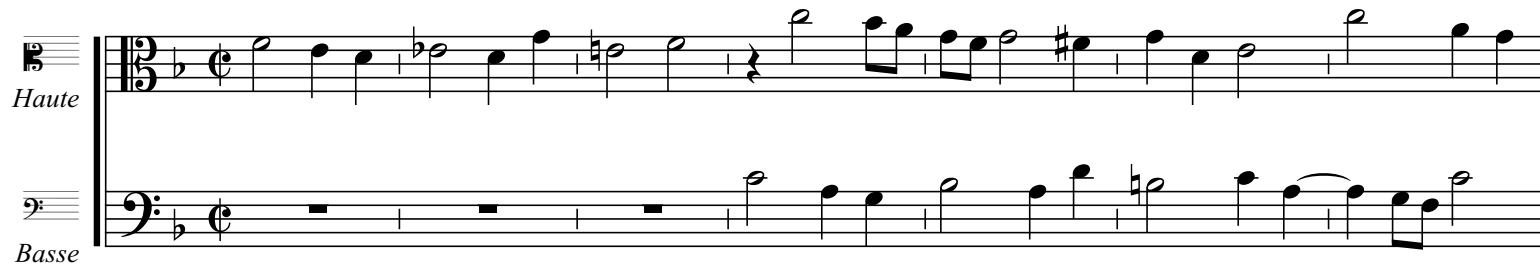
55

Measures 55-61 of a musical score. The system consists of two staves. The top staff is in treble clef with a key signature of one flat. It contains a melodic line with eighth and sixteenth notes, including a triplet in measure 58. The bottom staff is in bass clef with a key signature of one flat. It contains a bass line with eighth and sixteenth notes, including a triplet in measure 58. The system ends with a double bar line.

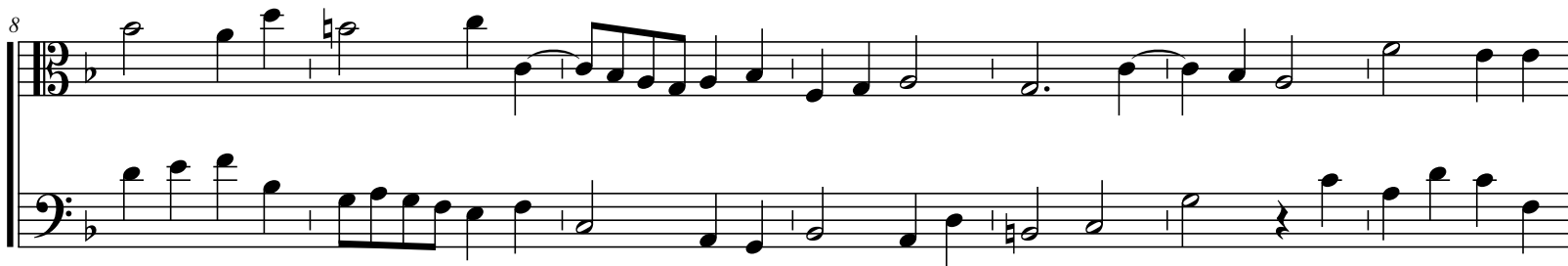
Vingt-septiesme fantaisie

Haute

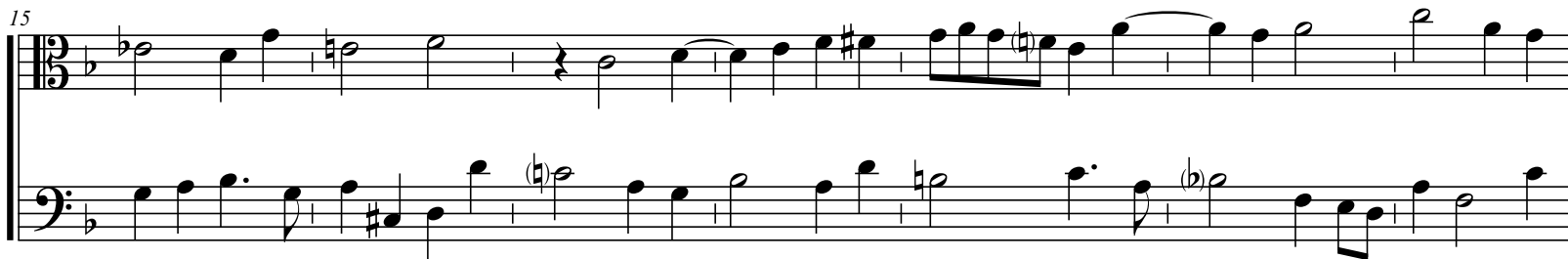
Basse



8



15



22

Two staves of music in 2/4 time. The key signature has one flat (B-flat). The top staff begins with a treble clef and a key signature change to one flat. The bottom staff begins with a bass clef and a key signature change to one flat. The music consists of eighth and sixteenth notes, with some rests and accidentals.

30

Two staves of music in 2/4 time. The key signature has one flat (B-flat). The top staff begins with a treble clef and a key signature change to one flat. The bottom staff begins with a bass clef and a key signature change to one flat. The music consists of eighth and sixteenth notes, with some rests and accidentals.

37

Two staves of music in 2/4 time. The key signature has one flat (B-flat). The top staff begins with a treble clef and a key signature change to one flat. The bottom staff begins with a bass clef and a key signature change to one flat. The music consists of eighth and sixteenth notes, with some rests and accidentals.

45

System 1 (Measures 45-52): The treble staff begins with a half note Bb, followed by quarter notes D, F, and a half note G. A key signature change to one sharp (F#) occurs at measure 46. The melody continues with eighth and quarter notes, including a trill on G in measure 48. The bass staff features a half note Bb, followed by eighth notes D, F, and a half note G. It includes a trill on G in measure 46 and a whole rest in measure 50.

53

System 2 (Measures 53-61): The treble staff continues the melody with eighth and quarter notes, featuring a trill on G in measure 55. The bass staff provides accompaniment with eighth and quarter notes, including a trill on G in measure 55. The system concludes with a whole note chord in measure 61.

62

System 3 (Measures 62-69): The treble staff starts with a half note Bb, followed by quarter notes D, F, and a half note G. A key signature change to one flat (Bb) occurs at measure 63. The melody continues with eighth and quarter notes, ending with a whole note chord in measure 69. The bass staff features a half note Bb, followed by quarter notes D, F, and a half note G. It includes a trill on G in measure 63 and ends with a whole note chord in measure 69.

Vingt-huictiesme fantaisie

Haute

Basse

Handwritten musical notation for measures 1 through 6. The score is written for two staves: 'Haute' (treble clef) and 'Basse' (bass clef). The key signature has one flat (B-flat) and the time signature is common time (C). The notation includes various note values, rests, and accidentals (sharps and flats).

7

Handwritten musical notation for measures 7 through 13. The notation continues on two staves, showing more complex melodic and harmonic development with various note values and accidentals.

14

Handwritten musical notation for measures 14 through 20. The notation continues on two staves, concluding the piece with various note values and accidentals.

21

Measures 21-27 of a musical score. The music is written in a key with one flat (B-flat) and a 3/4 time signature. The upper staff uses a soprano clef (C1) and the lower staff uses a bass clef (C2). The melody in the upper staff begins with a half note G2, followed by quarter notes A2, B2, and C3, then a dotted quarter note D3, and continues with eighth and quarter notes. The bass line in the lower staff starts with a half note G1, followed by quarter notes A1, B1, and C2, then a dotted quarter note D2, and continues with eighth and quarter notes. Measure 27 ends with a double bar line.

28

Measures 28-34 of a musical score. The music continues in the same key and time signature. The upper staff (soprano clef) and lower staff (bass clef) both feature a mix of eighth and quarter notes, with some measures containing beamed eighth notes. Measure 34 ends with a double bar line.

35

Measures 35-41 of a musical score. The music continues in the same key and time signature. The upper staff (soprano clef) and lower staff (bass clef) both feature a mix of eighth and quarter notes, with some measures containing beamed eighth notes. Measure 41 ends with a double bar line.

42

Measures 42-48 of a musical score in 2/4 time, key of B-flat major. The treble staff features a melodic line with eighth and sixteenth notes, including a triplet in measure 45. The bass staff provides a harmonic accompaniment with eighth and sixteenth notes. The system concludes with a double bar line in measure 48.

49

Measures 49-56 of a musical score in 2/4 time, key of B-flat major. The treble staff continues the melodic development with various note values and rests. The bass staff maintains the accompaniment pattern. The system concludes with a double bar line in measure 56.

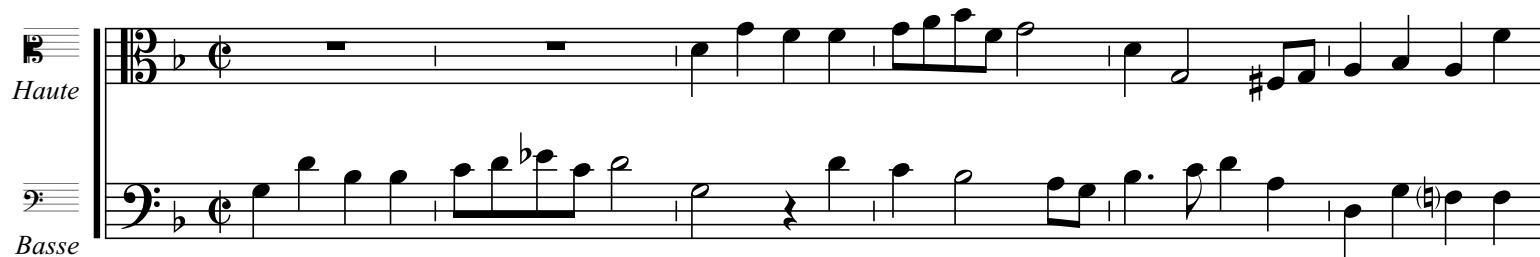
57

Measures 57-64 of a musical score in 2/4 time, key of B-flat major. The treble staff shows a melodic line that includes a half note and a whole note. The bass staff features a more active accompaniment with eighth and sixteenth notes. The system concludes with a double bar line in measure 64.

Vingt-neufiesme fantaisie

Haute


Basse



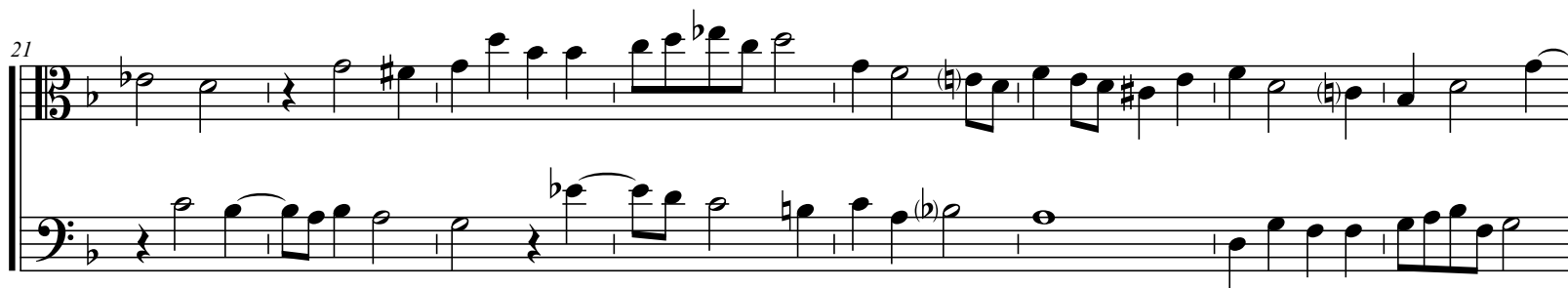
7



14



21



This system contains measures 21 through 28. The music is written for two staves in a 12/8 time signature. The key signature has one flat (B-flat). The upper staff begins with a treble clef and a key signature change to one sharp (F#) for measures 23-24, then returns to one flat. The lower staff begins with a bass clef. The music features a mix of eighth and sixteenth notes, with some measures containing rests.

29



This system contains measures 29 through 35. The music continues on two staves in 12/8 time. The upper staff uses a treble clef, and the lower staff uses a bass clef. The key signature remains one flat. The notation includes various note values and rests, with some measures featuring ties between notes.

36



This system contains measures 36 through 42. The music continues on two staves in 12/8 time. The upper staff uses a treble clef, and the lower staff uses a bass clef. The key signature remains one flat. The notation includes various note values and rests, with some measures featuring ties between notes.

44

Measures 44-52. Treble clef, key signature of one flat (B-flat). Measure 44 starts with a sharp sign (F#) before the first note. The melody in the treble clef features eighth and quarter notes, with a half note in measure 45. The bass clef accompaniment consists of eighth and quarter notes, with a half note in measure 45. The system ends with a double bar line.

53

Measures 53-59. Treble clef, key signature of one flat (B-flat). Measure 53 starts with a sharp sign (F#) before the first note. The melody in the treble clef features eighth and quarter notes, with a half note in measure 54. The bass clef accompaniment consists of eighth and quarter notes, with a half note in measure 54. The system ends with a double bar line.

60

Measures 60-67. Treble clef, key signature of one flat (B-flat). Measure 60 starts with a sharp sign (F#) before the first note. The melody in the treble clef features eighth and quarter notes, with a half note in measure 61. The bass clef accompaniment consists of eighth and quarter notes, with a half note in measure 61. The system ends with a double bar line.

Trentiesme fantaisie

Haute

Basse



7



14



21

Measures 21-27 of a musical score. The system consists of two staves. The upper staff is in treble clef with a key signature of one flat (B-flat). It contains a melodic line with eighth and sixteenth notes, including a triplet of eighth notes in measure 24. The lower staff is in bass clef with the same key signature, providing a harmonic accompaniment with eighth and sixteenth notes. The system concludes with a double bar line.

28

Measures 28-35 of a musical score. The system consists of two staves. The upper staff is in treble clef with a key signature of one flat. It features a melodic line with various note values and rests. The lower staff is in bass clef with the same key signature, providing a harmonic accompaniment. The system concludes with a double bar line.

36

Measures 36-42 of a musical score. The system consists of two staves. The upper staff is in treble clef with a key signature of one flat. It contains a melodic line with eighth and sixteenth notes, including a triplet of eighth notes in measure 39. The lower staff is in bass clef with the same key signature, providing a harmonic accompaniment with eighth and sixteenth notes. The system concludes with a double bar line.

43

Measures 43-50. The music is in 3/4 time, key of B-flat major. The treble staff features a melody with eighth and quarter notes, including a trill in measure 48. The bass staff provides a harmonic accompaniment with eighth and quarter notes, including a trill in measure 48.

51

Measures 51-58. The music continues in 3/4 time, key of B-flat major. The treble staff features a melody with eighth and quarter notes, including a trill in measure 54. The bass staff provides a harmonic accompaniment with eighth and quarter notes, including a trill in measure 54.

59

Measures 59-66. The music concludes in 3/4 time, key of B-flat major. The treble staff features a melody with eighth and quarter notes, including a trill in measure 64. The bass staff provides a harmonic accompaniment with eighth and quarter notes, including a trill in measure 64.

Trente-uniesme fantaisie

Haute

Basse



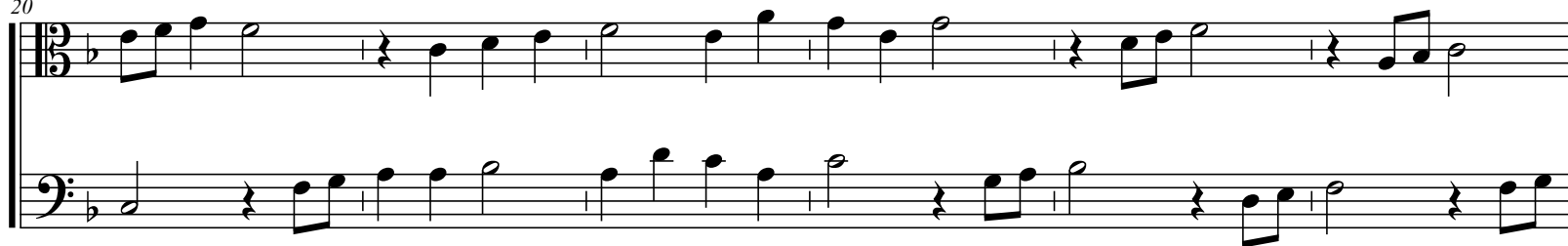
7



14



20



26



32



38

This block contains measures 38 and 39 of the musical score. Measure 38 features a treble staff with a melody starting on G4, moving to A4, B4, and C5, then descending to B4, A4, G4, and F#4. The bass staff provides a harmonic accompaniment, starting on G3, moving to A3, B3, and C4, then descending to B3, A3, G3, and F#3. Measure 39 continues the melody in the treble staff, starting on G4, moving to A4, B4, and C5, then descending to B4, A4, G4, and F#4. The bass staff continues the accompaniment, starting on G3, moving to A3, B3, and C4, then descending to B3, A3, G3, and F#3.

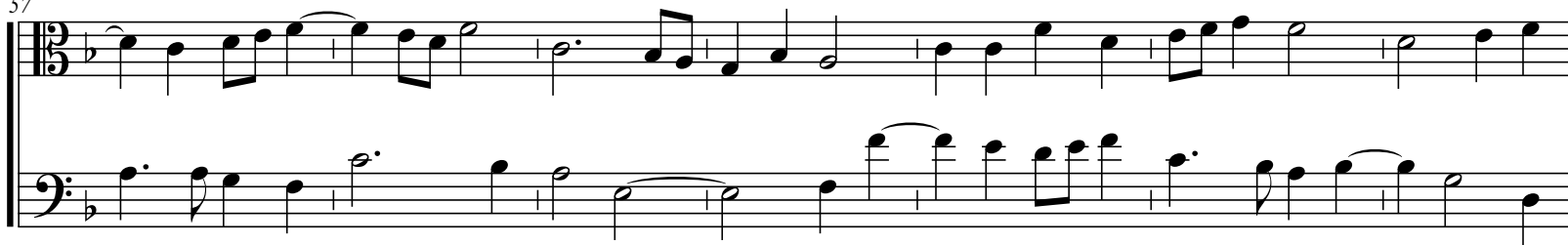
44

44

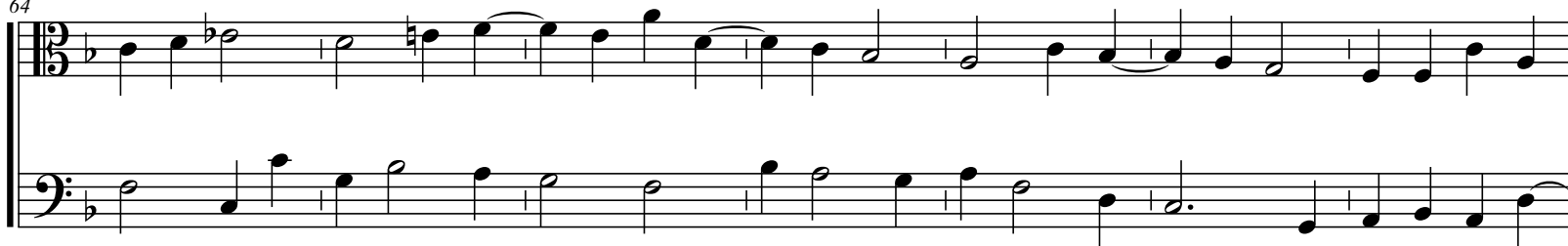
50

Example 10-10

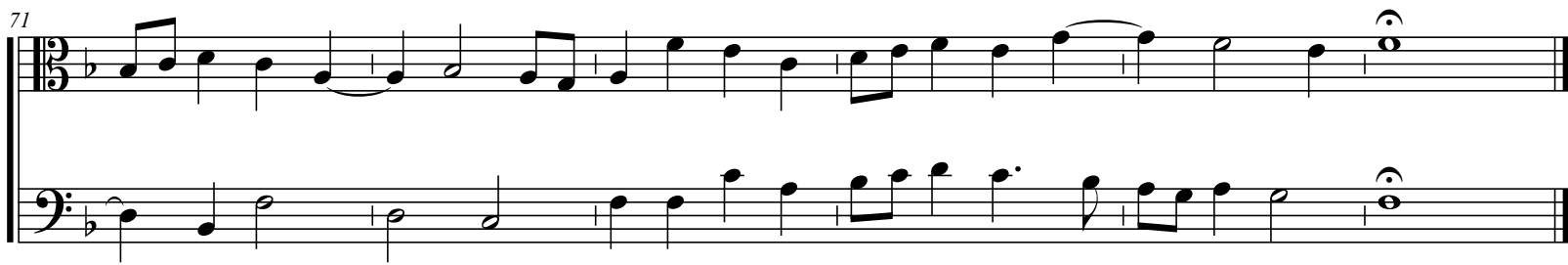
57



64



71



Trente-deuxiesme fantaisie

Haute

Basse

6

12

18

Measures 18-24 of a musical score. The system consists of two staves. The upper staff is in treble clef with a key signature of one flat (B-flat). It contains measures 18 through 24. The lower staff is in bass clef with a key signature of one flat (B-flat). It contains measures 18 through 24. The music features a variety of note values including eighth, quarter, and half notes, with some beamed eighth notes and a final sharp sign at the end of measure 24.

25

Measures 25-30 of a musical score. The system consists of two staves. The upper staff is in treble clef with a key signature of one flat (B-flat). It contains measures 25 through 30. The lower staff is in bass clef with a key signature of one flat (B-flat). It contains measures 25 through 30. The music continues with various note values and rests, ending with a whole note in measure 30.

31

Measures 31-36 of a musical score. The system consists of two staves. The upper staff is in treble clef with a key signature of one flat (B-flat). It contains measures 31 through 36. The lower staff is in bass clef with a key signature of one flat (B-flat). It contains measures 31 through 36. The music features a variety of note values including eighth, quarter, and half notes, with some beamed eighth notes and a final sharp sign at the end of measure 36.

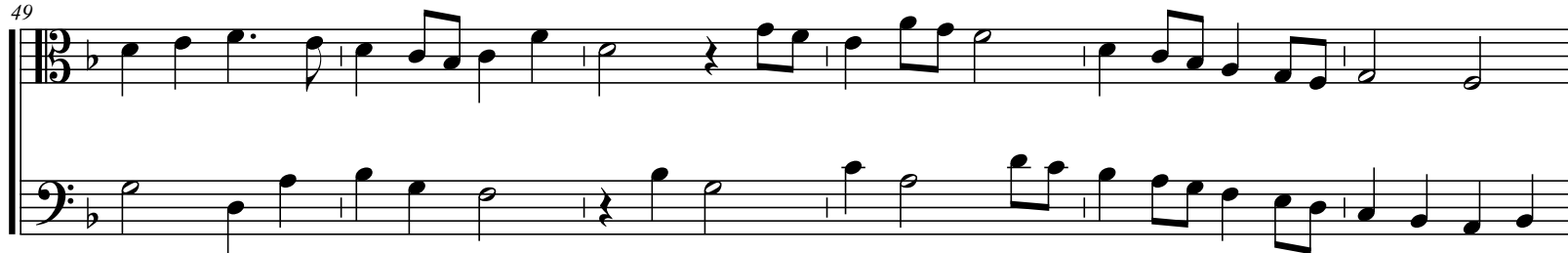
37



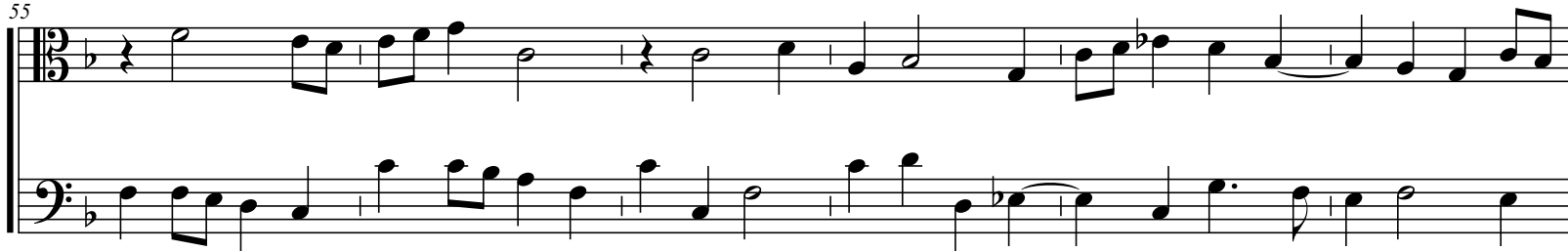
43



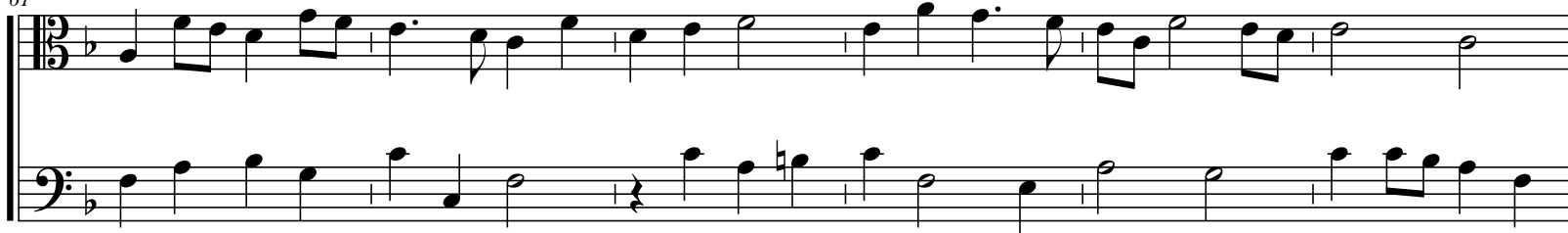
49



55



61



67



Trente-troisiesme fantaisie

Haute

Basse

7

15

31

39

The image shows a musical score for the song "The Rose Tree". It consists of two staves. The top staff is in treble clef and the bottom staff is in bass clef. The key signature has one flat (B-flat). The melody is written in the treble staff, and the bass staff provides a harmonic accompaniment. The music is in 4/4 time. The score includes a key signature change from one flat to two flats (B-flat and E-flat) in the middle. The melody features a mix of eighth and quarter notes, with some rests. The bass line consists of quarter and eighth notes, providing a steady accompaniment.

47

Measures 47-55. Treble clef, key of B-flat major. The melody features a mix of eighth and quarter notes, with a half note in measure 50. The bass line consists of eighth and quarter notes, with a half note in measure 50. The piece concludes with a double bar line in measure 55.

56

Measures 56-63. Treble clef, key of B-flat major. The melody continues with eighth and quarter notes. The bass line features a more active eighth-note pattern. The piece concludes with a double bar line in measure 63.

64

Measures 64-71. Treble clef, key of B-flat major. The melody features a mix of eighth and quarter notes, with a half note in measure 70. The bass line consists of eighth and quarter notes, with a half note in measure 70. The piece concludes with a double bar line in measure 71.

Trente-quatriesme fantaisie

Haute

Basse

7

15

23

23



30



38



45



53



63



Trente-cinquième fantaisie

Haute

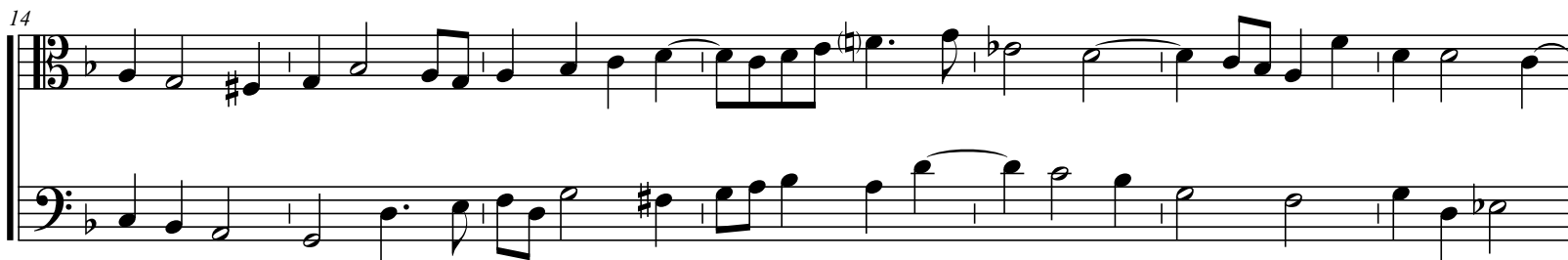
Basse



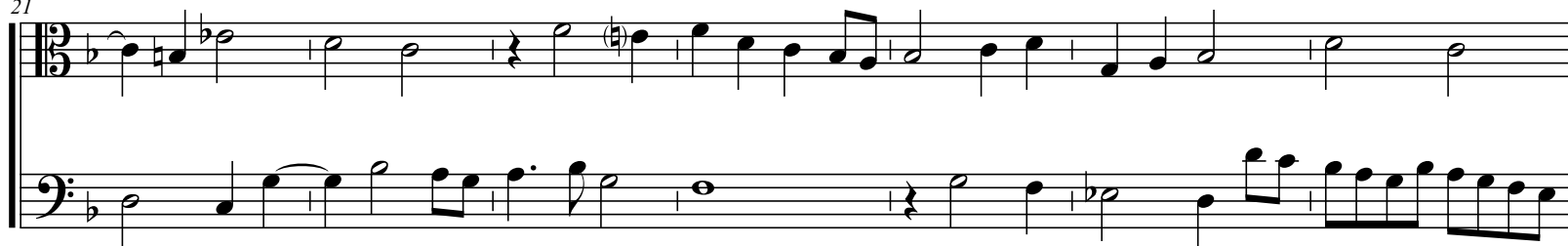
8



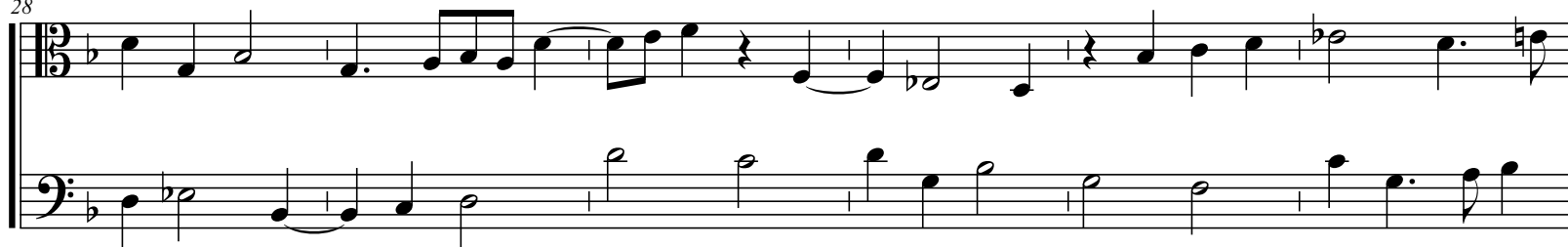
14



21



28



34



41

Measures 41-46 of a musical score. The system consists of two staves. The upper staff is in treble clef with a key signature of one flat (B-flat). It contains a melodic line with eighth and quarter notes, including a half rest in measure 44. The lower staff is in bass clef with the same key signature, providing a harmonic accompaniment with eighth and quarter notes.

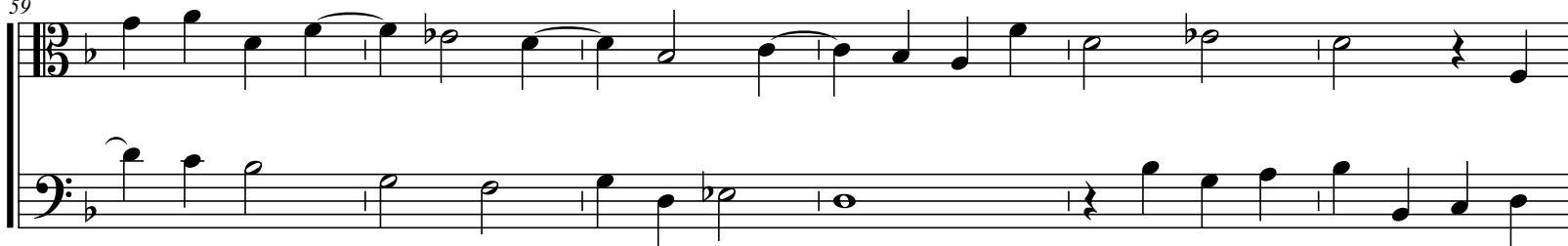
47

Measures 47-52 of a musical score. The system consists of two staves. The upper staff is in treble clef with a key signature of one flat. It features a more active melodic line with eighth and sixteenth notes, including a key signature change to two flats (B-flat and E-flat) in measure 51. The lower staff is in bass clef with the same key signature, continuing the harmonic accompaniment.

53

Measures 53-58 of a musical score. The system consists of two staves. The upper staff is in treble clef with a key signature of two flats. It contains a melodic line with eighth and quarter notes, including a half rest in measure 54. The lower staff is in bass clef with the same key signature, providing a harmonic accompaniment with eighth and quarter notes.

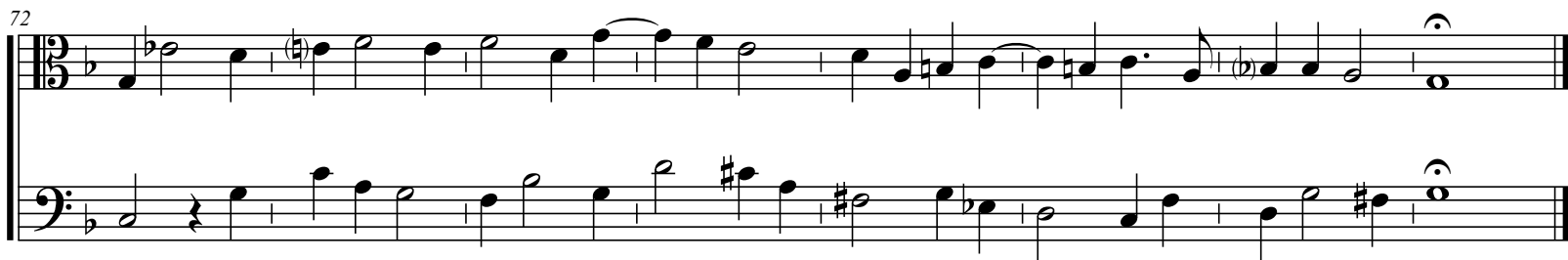
59



65



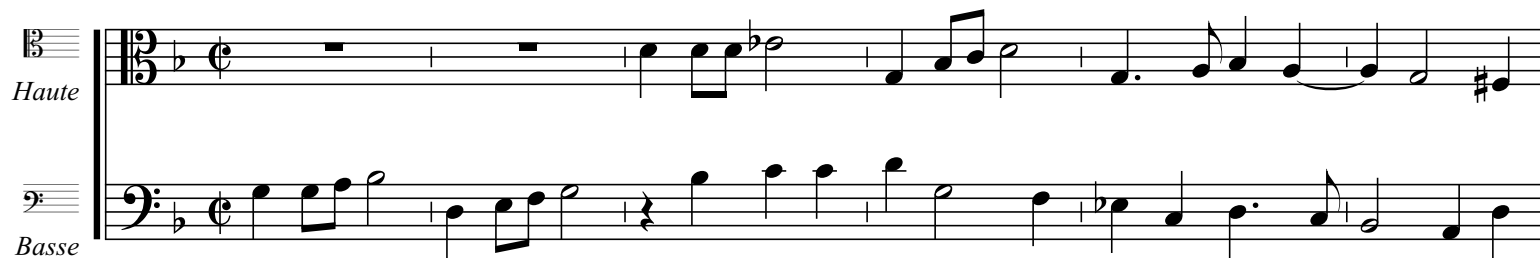
72



Trente-sixiesme fantaisie

Haute

Basse



7



14



21



27



33



39



45



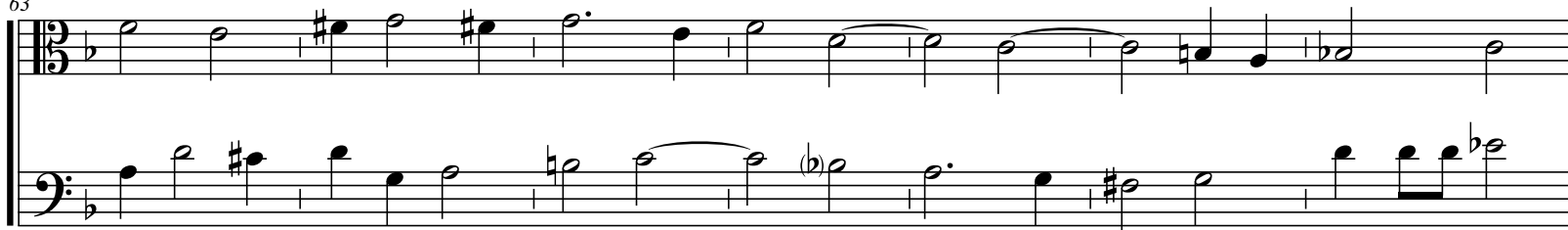
51



57



63



70

