

Praeludium et Fuga VIII

BWV 877

J. SEBASTIAN BACH

PETER H. BESSELING

4

7

10

13

15

Measures 15-16 of the Praeludium et Fuga VIII for Piano II. The key signature is D major (two sharps). Measure 15 features a treble clef staff with a series of eighth notes and a bass clef staff with a whole note. Measure 16 continues the treble staff with eighth notes and the bass staff with a whole note.

17

Measures 17-18 of the Praeludium et Fuga VIII for Piano II. Measure 17 shows a treble staff with eighth notes and a bass staff with a whole note. Measure 18 continues the treble staff with eighth notes and the bass staff with a whole note.

19

Measures 19-20 of the Praeludium et Fuga VIII for Piano II. Measure 19 features a treble staff with eighth notes and a bass staff with a whole note. Measure 20 continues the treble staff with eighth notes and the bass staff with a whole note.

21

Measures 21-22 of the Praeludium et Fuga VIII for Piano II. Measure 21 shows a treble staff with eighth notes and a bass staff with a whole note. Measure 22 continues the treble staff with eighth notes and the bass staff with a whole note.

24

Measures 24-26 of the Praeludium et Fuga VIII for Piano II. Measure 24 features a treble staff with eighth notes and a bass staff with a whole note. Measure 25 continues the treble staff with eighth notes and the bass staff with a whole note. Measure 26 shows a treble staff with eighth notes and a bass staff with a whole note.

27

Measures 27-29 of the Praeludium et Fuga VIII for Piano II. Measure 27 features a treble staff with eighth notes and a bass staff with a whole note. Measure 28 continues the treble staff with eighth notes and the bass staff with a whole note. Measure 29 shows a treble staff with eighth notes and a bass staff with a whole note.

30

33

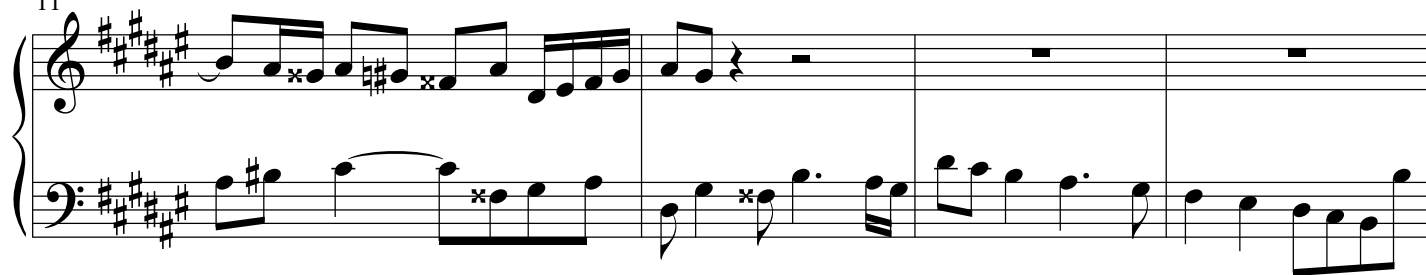
35

Fuga

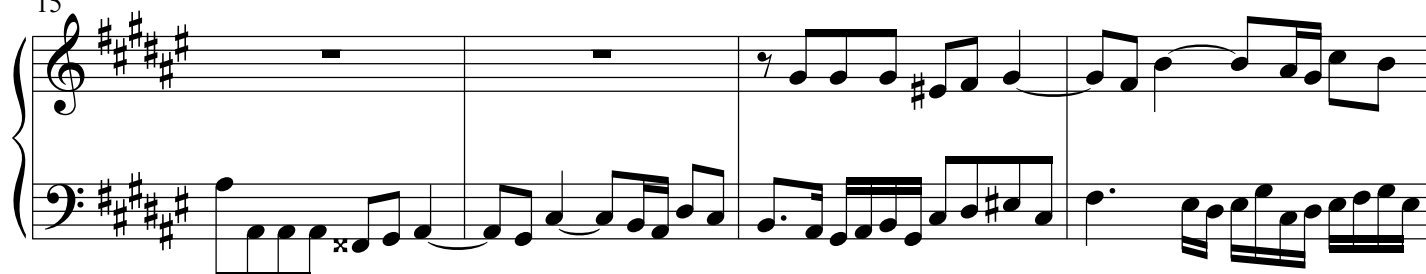
5

8

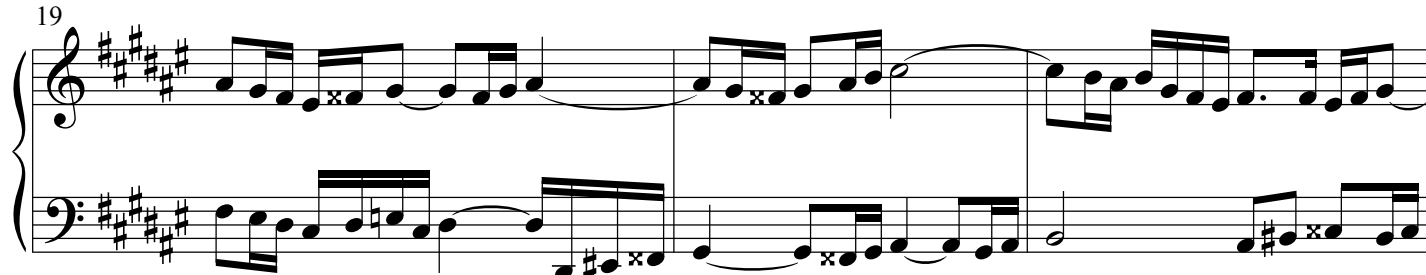
11



15



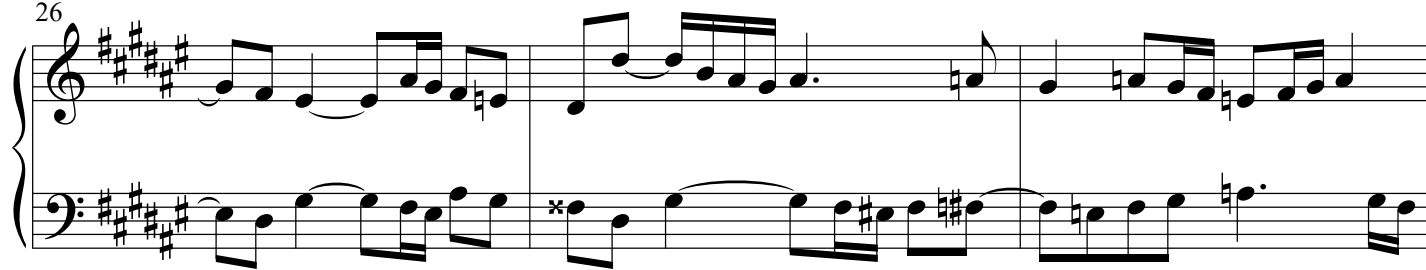
19



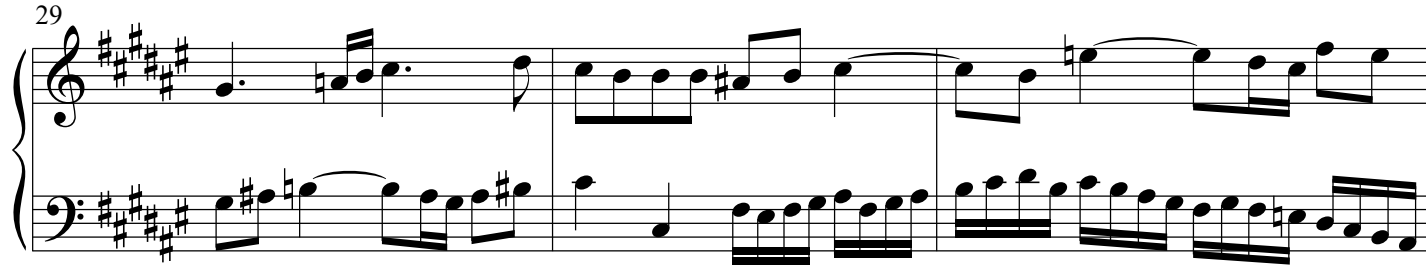
22



26



29



32

35

38

41

44