

# Fantasia in D major for solo violin

after BWV 1045

J. S. Bach  
trans. Shute

Allegro

4

7

10

14

21

28

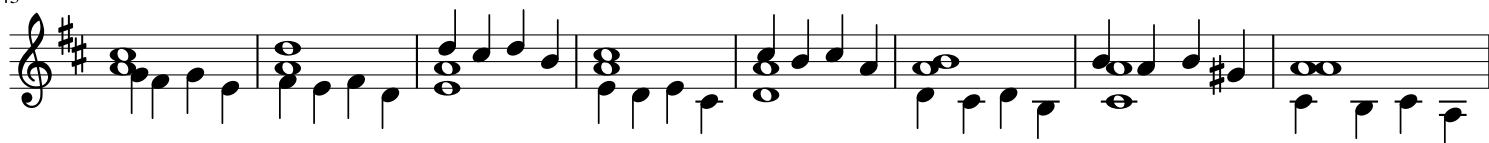
33

36

*arp.*

*arp.*

43



51



56



59



61



63



65



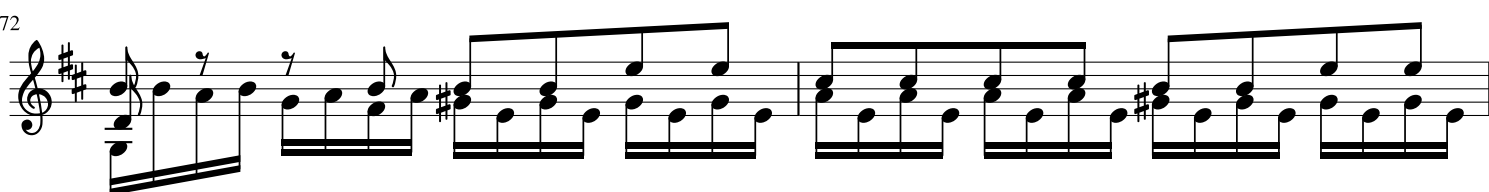
67



70



72



74

76

78

80

82

84

87

90

92

94

74

76

78

80

82

84

87

90

92

94

96

98

100

103

105

108

110

113

116

118

\* ossia: 8th-note a'

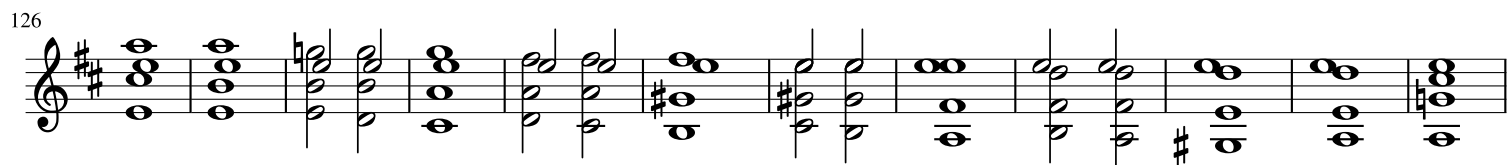
120



arpeggio ad lib

This musical staff contains measures 120 through 125. It begins with a treble clef and a key signature of two sharps (F# and C#). Measures 120-124 feature a continuous eighth-note arpeggiated pattern. In measure 125, the pattern transitions into a series of chords, with the instruction "arpeggio ad lib" written below the staff.

126



This musical staff contains measures 126 through 137. It continues with a series of chords and arpeggiated figures in the treble clef, maintaining the two-sharp key signature.

138



This musical staff contains measures 138 through 146. The notation shows a continuation of the harmonic progression with various chordal textures and some melodic movement within the chords.

147




This musical staff contains measures 147 through 149. It features a more active melodic line with eighth-note patterns and slurs, still within the two-sharp key signature.

150



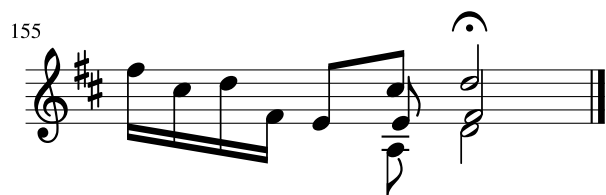
This musical staff contains measures 150 and 151. Measure 150 includes an asterisk (\*) above a specific note. The staff concludes with a double bar line.

152



This musical staff contains measures 152 through 154. It continues the melodic and harmonic development with eighth-note runs and slurs.

155



This musical staff contains measure 155, which is the final measure on this page. It ends with a double bar line.