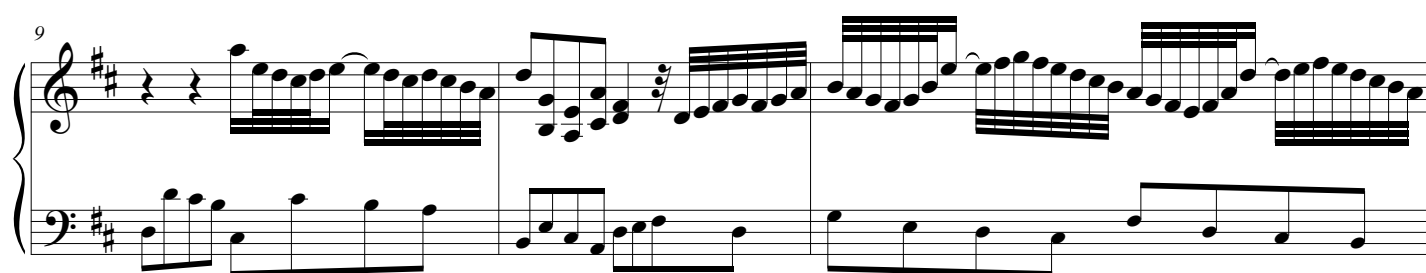
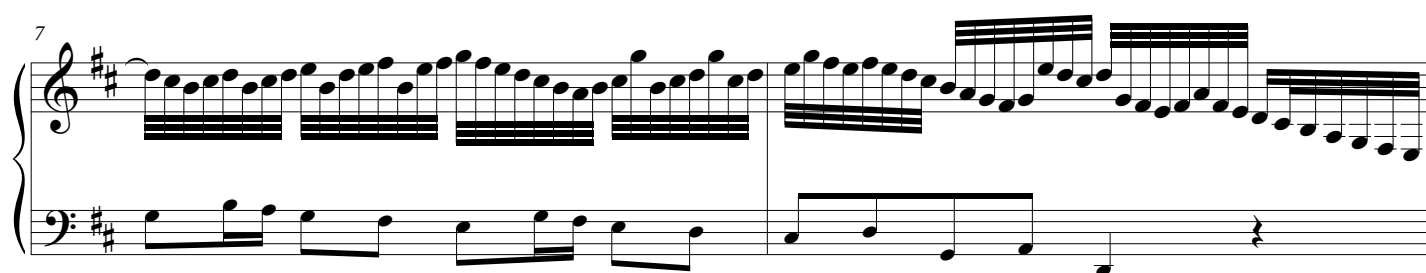
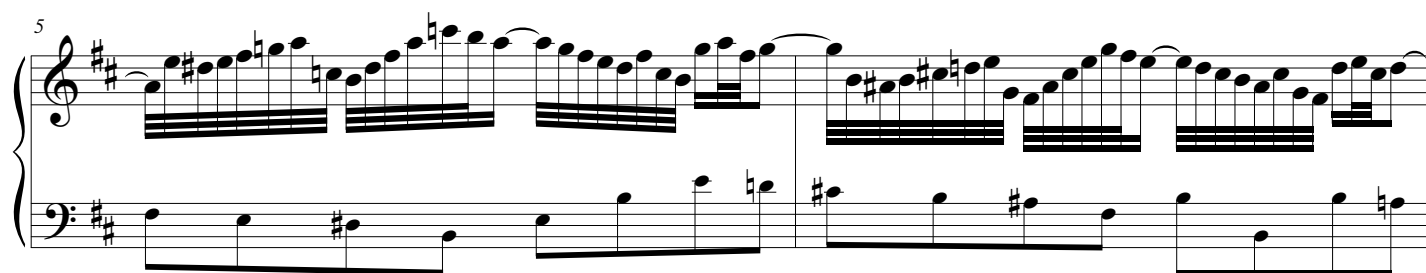
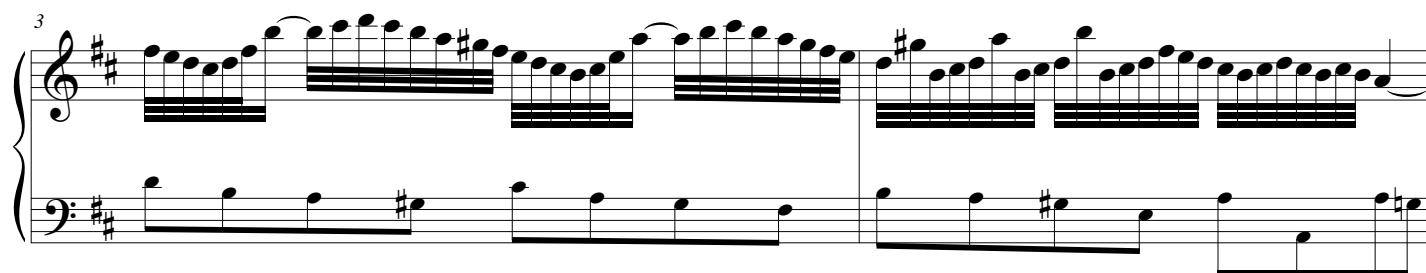
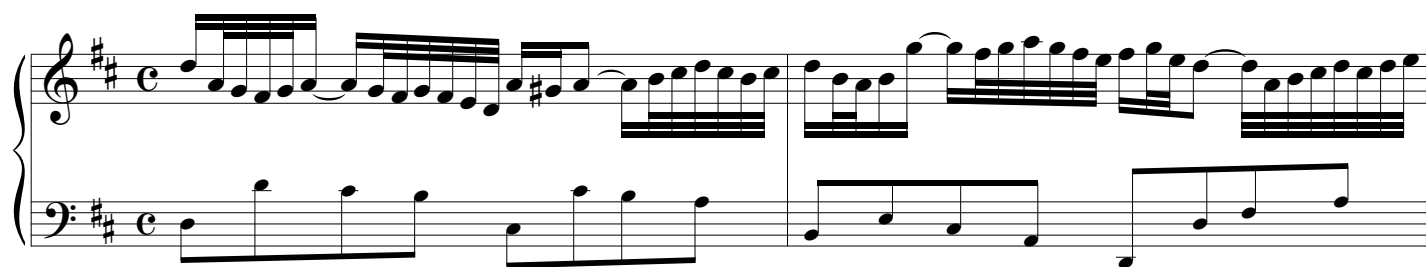


3. Aria



2
12

System 1 (measures 12-13): The right hand features a continuous eighth-note arpeggiated pattern in D major. The left hand plays a steady eighth-note bass line. Measure 13 includes a whole rest in the right hand.

14

System 2 (measures 14-15): The right hand continues the arpeggiated pattern, with a key signature change to D minor in measure 15. The left hand maintains the eighth-note bass line.

17

System 3 (measures 17-18): The right hand introduces a more complex rhythmic pattern with sixteenth-note runs and chords. The left hand continues the eighth-note bass line.

20

System 4 (measures 20-21): The right hand features a series of sixteenth-note runs and chords. The left hand continues the eighth-note bass line.

22

System 5 (measures 22-23): The right hand continues with complex sixteenth-note patterns and chords. The left hand continues the eighth-note bass line.

25

System 6 (measures 25-26): The right hand features a series of sixteenth-note runs and chords. The left hand continues the eighth-note bass line.

28

System 1 (Measures 28-29): The right hand features a continuous sixteenth-note arpeggiated pattern. The left hand plays a steady eighth-note bass line. The key signature is two sharps (F# and C#).

30

System 2 (Measures 30-31): The right hand continues the arpeggiated pattern with some chromatic movement. The left hand maintains the eighth-note bass line. The key signature is two sharps.

32

System 3 (Measures 32-33): The right hand continues the arpeggiated pattern. The left hand maintains the eighth-note bass line. The key signature is two sharps.

34

System 4 (Measures 34-35): The right hand begins with a few chords before rejoining the arpeggiated pattern. The left hand continues the eighth-note bass line. The key signature is two sharps.

36

System 5 (Measures 36-37): The right hand features a more complex melodic line with some rests. The left hand continues the eighth-note bass line. The key signature is two sharps.

38

System 1, measures 38-39. The key signature is two sharps (F# and C#). Measure 38 features a treble clef with a quarter note G4, a quarter rest, and a sixteenth-note triplet of A4, B4, and C5. The bass clef has a half-note G3. Measure 39 has a treble clef with a half-note G4 and a half-note F#4. The bass clef has a half-note G3.

40

System 2, measures 40-41. Measure 40 has a treble clef with a sixteenth-note triplet of G4, A4, and B4, followed by a quarter note C5. The bass clef has a half-note G3. Measure 41 has a treble clef with a half-note G4 and a half-note F#4. The bass clef has a half-note G3.

42

System 3, measures 42-43. Measure 42 has a treble clef with a sixteenth-note triplet of G4, A4, and B4, followed by a quarter note C5. The bass clef has a half-note G3. Measure 43 has a treble clef with a half-note G4 and a half-note F#4. The bass clef has a half-note G3.

44

System 4, measures 44-45. Measure 44 has a treble clef with a quarter note G4, a quarter rest, and a sixteenth-note triplet of A4, B4, and C5. The bass clef has a half-note G3. Measure 45 has a treble clef with a half-note G4 and a half-note F#4. The bass clef has a half-note G3.

46

System 5, measures 46-47. Measure 46 has a treble clef with a quarter note G4, a quarter rest, and a sixteenth-note triplet of A4, B4, and C5. The bass clef has a half-note G3. Measure 47 has a treble clef with a half-note G4 and a half-note F#4. The bass clef has a half-note G3.