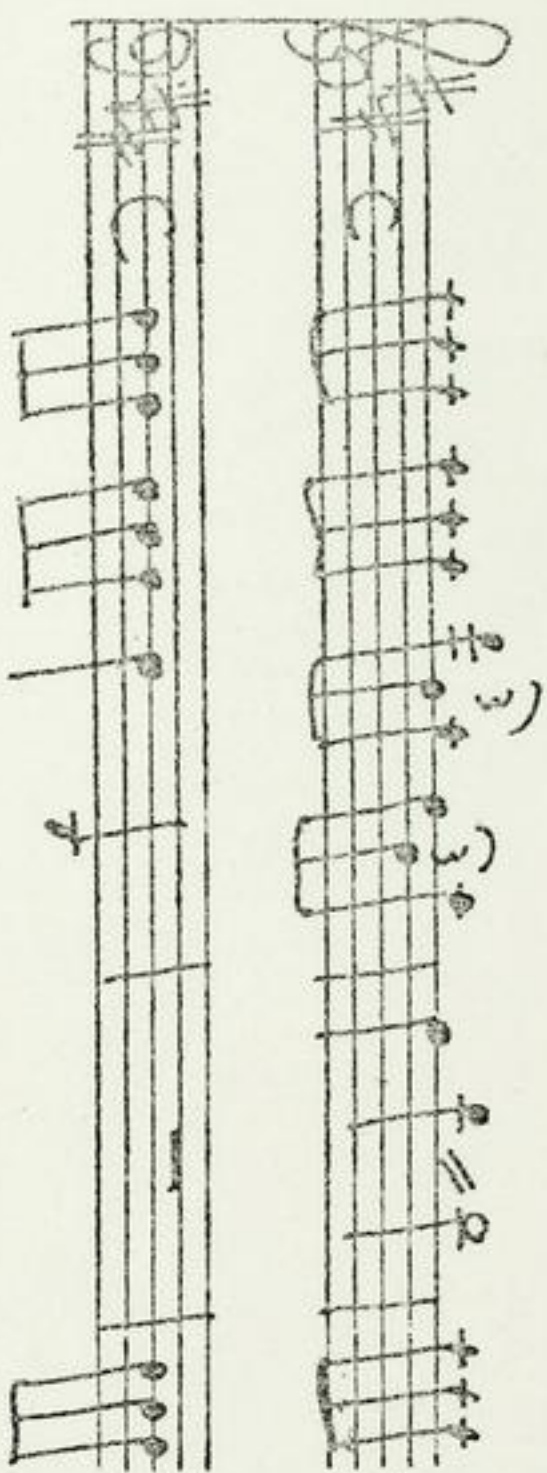


Graupner, Christoph (1683-1760)

BRD DS Mus.ms 411/21

Concerto.a 2 Clarin. Tym.p. 2 Violis. Viola e Cembalo. Christoph
Graupner. / (D-dur) [Kopftitel]



Allegro C D-dur - [ohne
Satzbez.] 3 D-dur -
[ohne Satzbez.] C D-dur.

Autograph ca. 1744/45. 35,5 x 21,5 cm.

partitur: 5 Bl. Alte Zählung: 3 Bogen.

Alte Sign.: No. 21. N^F 109.

Witte Nr. 21.

6054, 11.

N^o 21.22.

N^o 109
— 110.

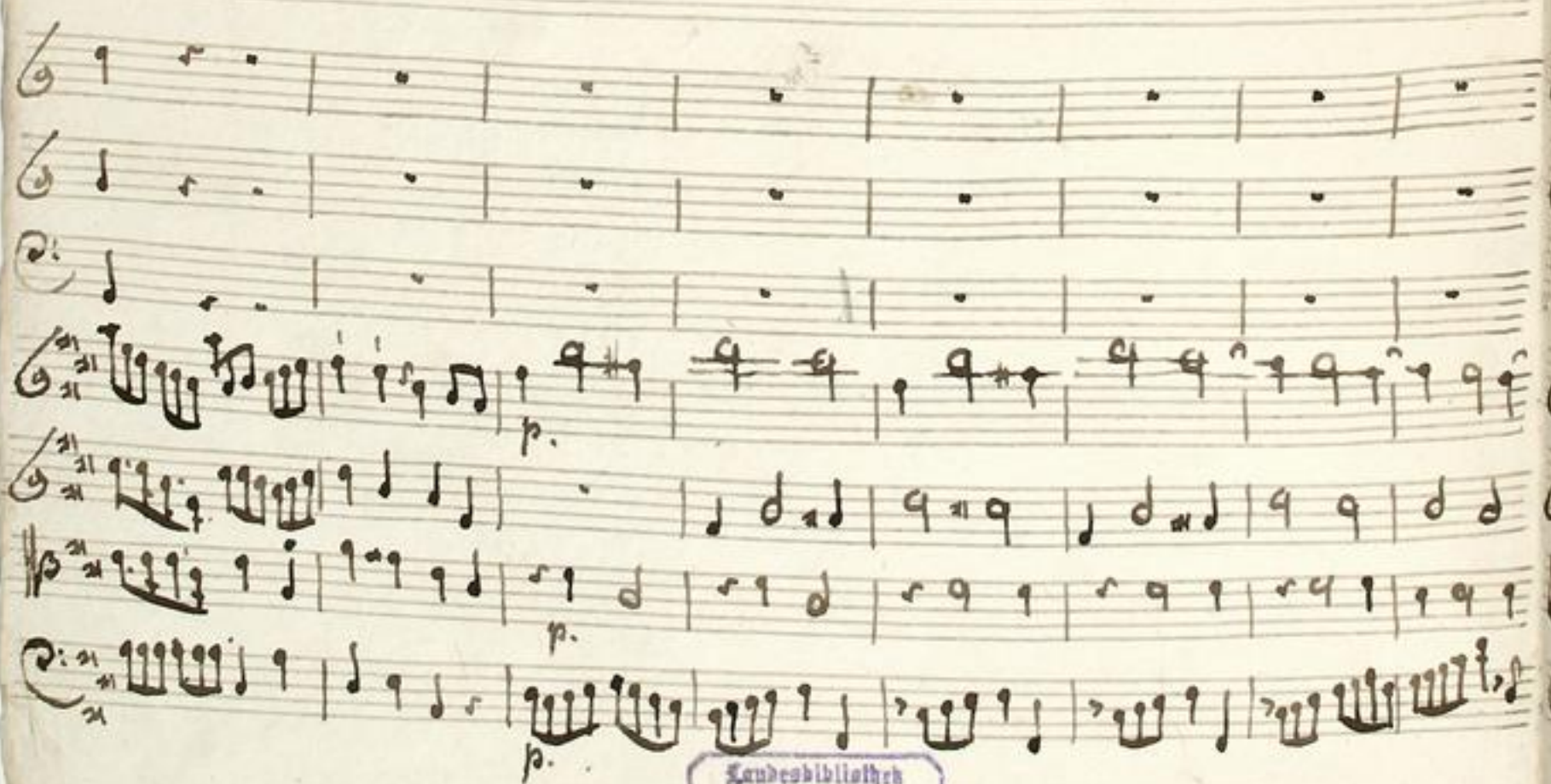
folle (10) 11.



Handwritten musical score for the first system, featuring staves for strings, woodwinds, and keyboard. The notation includes various musical symbols such as notes, rests, and clefs. The word *Allegro* is written below the staves.

Handwritten musical score for the second system, continuing the composition. The notation includes various musical symbols such as notes, rests, and clefs. The word *Allegro* is written below the staves.

Handwritten musical score for the third system, concluding the page. The notation includes various musical symbols such as notes, rests, and clefs. The word *Allegro* is written below the staves.



Landesbibliothek
Darmstadt

Handwritten musical score on aged paper, featuring multiple staves with musical notation, including notes, rests, and dynamic markings such as *pp.* and *ff.*. The notation is in a historical style, possibly from the 18th or 19th century. The page is numbered '2' in the top right corner.





Landesbibliothek
Darmstadt



Handwritten musical score on a single page, numbered 4 in the top right corner. The score is written on ten staves. The first three staves are mostly empty, with some notes in the first staff. The fourth staff begins with a treble clef and a key signature of one sharp (F#). The notation is a mix of whole, half, and quarter notes, with some rests. The fifth staff has a treble clef and a key signature of one sharp. The sixth staff has a treble clef and a key signature of one sharp. The seventh staff has a treble clef and a key signature of one sharp. The eighth staff has a treble clef and a key signature of one sharp. The ninth staff has a treble clef and a key signature of one sharp. The tenth staff has a treble clef and a key signature of one sharp.

Handwritten musical score on a single page, continuing from the previous page. The score is written on ten staves. The first three staves are mostly empty, with some notes in the first staff. The fourth staff begins with a treble clef and a key signature of one sharp (F#). The notation is a mix of whole, half, and quarter notes, with some rests. The fifth staff has a treble clef and a key signature of one sharp. The sixth staff has a treble clef and a key signature of one sharp. The seventh staff has a treble clef and a key signature of one sharp. The eighth staff has a treble clef and a key signature of one sharp. The ninth staff has a treble clef and a key signature of one sharp. The tenth staff has a treble clef and a key signature of one sharp.

Handwritten musical score on a single page, continuing from the previous page. The score is written on ten staves. The first three staves are mostly empty, with some notes in the first staff. The fourth staff begins with a treble clef and a key signature of one sharp (F#). The notation is a mix of whole, half, and quarter notes, with some rests. The fifth staff has a treble clef and a key signature of one sharp. The sixth staff has a treble clef and a key signature of one sharp. The seventh staff has a treble clef and a key signature of one sharp. The eighth staff has a treble clef and a key signature of one sharp. The ninth staff has a treble clef and a key signature of one sharp. The tenth staff has a treble clef and a key signature of one sharp.



Handwritten musical notation on six staves. The notation includes various note values, rests, and bar lines, typical of early printed music.

Handwritten musical notation on six staves. The notation includes various note values, rests, and bar lines, typical of early printed music.

Handwritten musical notation on six staves. The notation includes various note values, rests, and bar lines, typical of early printed music.

