

Concerto stilizzato

paraphrase on a motif by Brahms

PARTE PRIMA: "CADENZA"

Tamás Beischer-Matyó

Adagio $\text{♩} = 60$ Cadenza

22

25

trb

ppp ff ff

30

poco rall. . . . Poco sostenuto

ff ff

PARTE SECONDA: "FORMA-SONATA"

Allegro con brio $\text{♩} = 180$ ($\text{♩} = 60$)

35

40

trb

ff ff ff ff pp

3

44

C. a., Bsn. 1

45

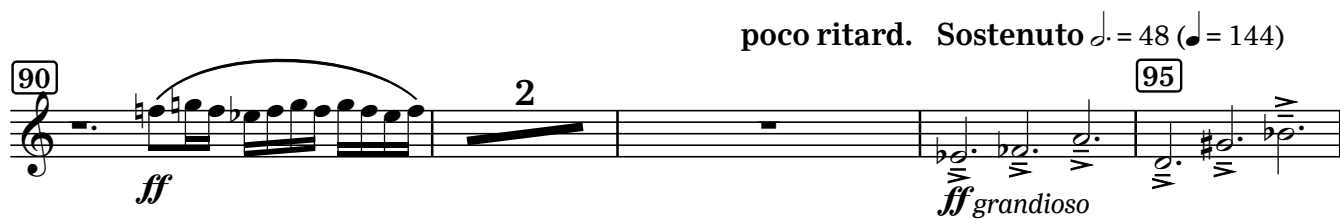
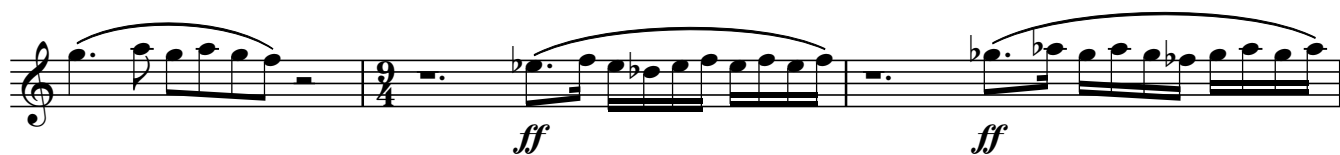
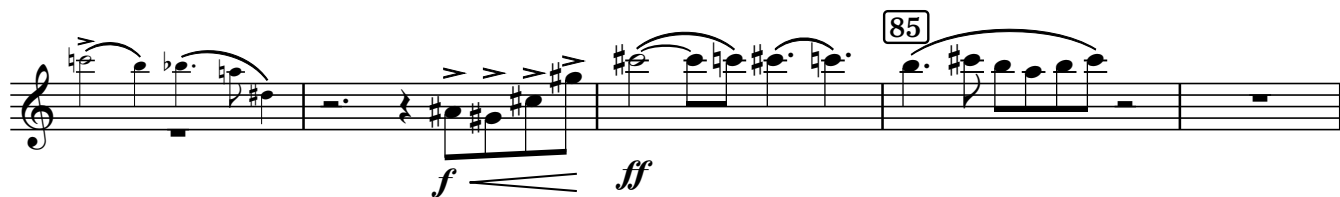
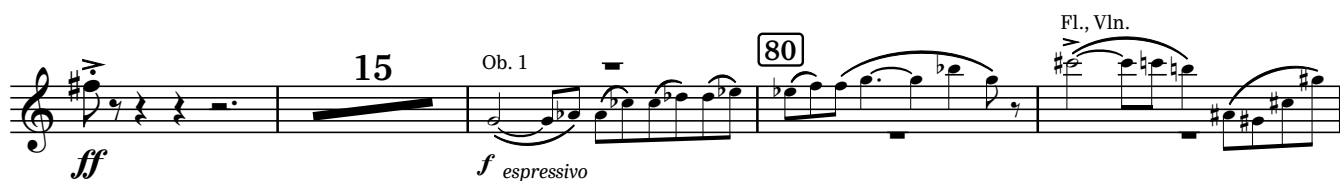
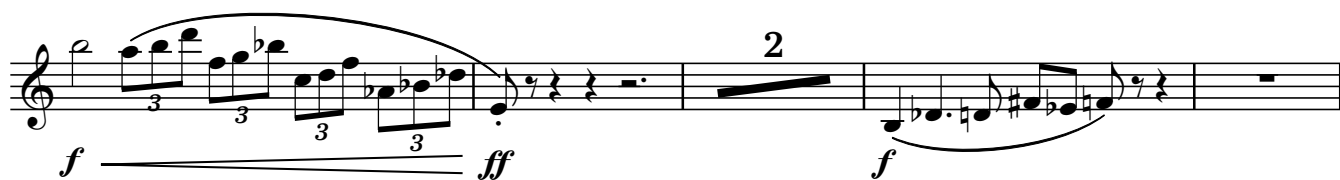
D. bsn., S. pno., D. b.

50

mf f

55

2





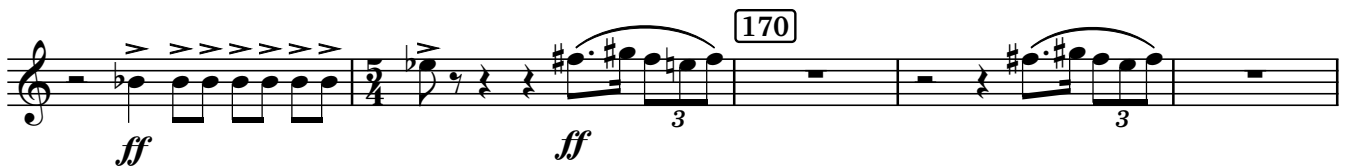
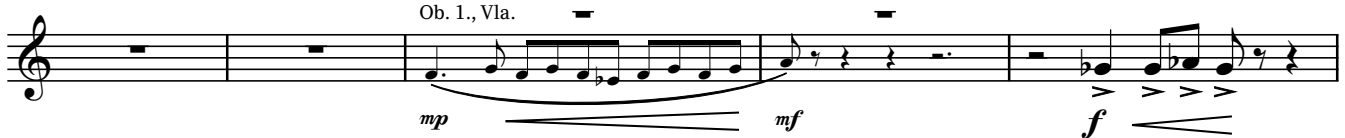
molto rall. a tempo

rall. Meno allegro ♩ = 120 (senza rall.)



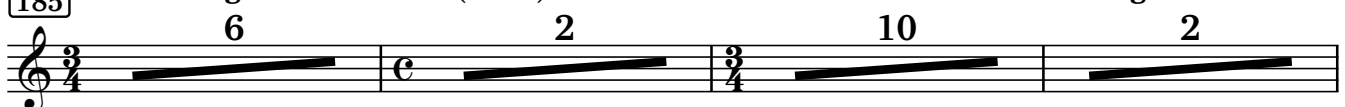
accel. al ♩ = 180 (a tempo)

Ob. 1., Vla.

**PARTE TERZA: "LIED"**

[185] subito Adagio molto ♩ = 60 (♩ = ♩)

allargando



205 a tempo 3 210 2 4

molto rall. più adagio e molto flessibile $\text{♩} = 48$ poco a poco allarg.

220

PARTE QUARTA: "RONDÒ"

a tempo ($\text{♩} = 48$) rall. Allegro vivace $\text{♩} = 180$ ($\text{♩} = 90$)

225 B. cl. *p marcato*

230 5 235 *trb trb tr# tr#*

poco rall. a tempo rall. a tempo

245 S. pno *f*

Fl., Cl., Str. 250 *f p ff*

255 *mf f*

260 265

8 Picc. Fl.

4 3 3 3

pp

270

p *f*

275

2 8 3

S. pno.

p marcato *f* *f*

290

2 2

295 poco ritard. a tempo

11

Tpt. 1

310 Cl. 1 Tpt. 1 + Cl. 1

p *f* *ff* *ff*

rall. ----- Meno vivace ♩ = 144

315 325

10 14

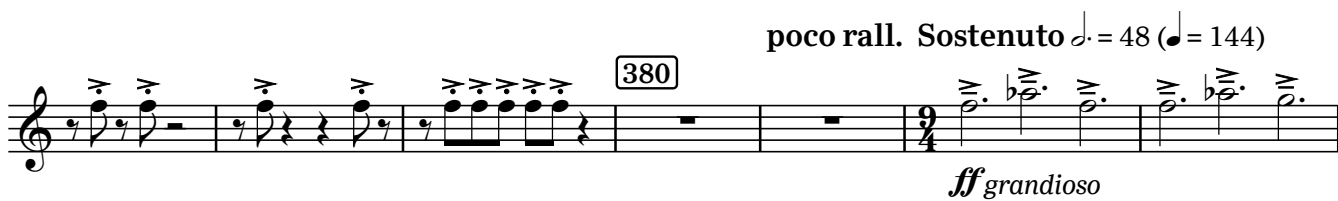
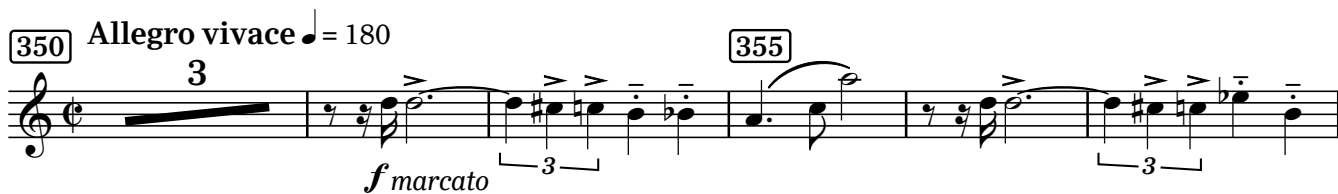
340 rall. a tempo

Tpt. 1

S. pno.

345

mp



PARTE QUINTA: "CONCLUSIONE"

