

Bass

# I - Introito

## Requiem Mass

Rafael Sales Arantes (1980 - )  
Composto de 03/09/03 a 31/12/04

**Andante**

**5**

*f* Re - qui - em æ - ter - nam do - na eis — Do - mi - ne

et lux per - pe - tu - a *pp* lu - ce - at eis. **4**

**Solo**

*mf* Te de - cet — hy - mnus De - us in — Si - on et ti - bi red -

de - tur vo - tum in Je - ru - sa - lem. **Tutti** *f* Ex -

au - di ex - au - di o - ra - ti - o - nem me - am ad te om - nis

ca - ro ve - ni - et *p* ve - ni - et **4** *f* Re - qui - em æ -

ter - nam do - na eis — Do - mi - ne et lux per - pe - tu - a

*pp* lu - ce - at eis lu - ce - at *ppp* e - is. —

# Kyrie

Bass

## Requiem Mass

Rafael Sales Arantes (1980 - )

Composto de 03/09/03 a 31/12/04

Moderato

*f* Ky - ri - e e - lei - son! Ky - ri - e e - lei - son! Ky - ri - e e - lei -

son! *mf* Ky - ri - e e - lei - son! Ky - ri - e e - lei - i - son — Ky - ri -

e e - lei - son! e - lei - son! Ky - ri - e - lei - son! *p* e - lei -

son! e - lei - i - son e - lei - i - son e -

lei - son *f* Ky - ri - e e - lei - son Ky - ri - e e -

lei - son! Ky - ri - e e - lei - son! Ky - ri - e e - lei - son! Ky -

- ri - e e - lei - i - son! Ky - ri - e e - lei - son! Ky - ri - e e - lei - i - son —

— e - lei - i - son!

# Gradual

Bass

## Requiem Mass

Rafael Sales Arantes (1980 - )  
Composto de 03/09/03 a 31/12/04

Andante

*cresc.*

*p* Re - qui-em æ - ter - nam do-na e - is Do - mi - ne *f* et

lux per - pe - tu-a lu - ce - at eis. In me-mo - ria æ -

**2**

ter - na e - rit jus - tus jus - tus e - rit

jus - tus In me - mo - ri-a æ - ter - na e - rit jus - - -

tus *pp* ab au - di - tio - ne ma - la

non ti - me - bit non ti - me - - bit.

Bass

# Tractus

## Requiem Mass

Rafael Sales Arantes (1980 - )

Composto de 03/09/03 a 31/12/04

**Adagio** ♩ = 40

**4**

**Solo**

**Tutti**

*p* Ab - sol - ve, Do - mi - ne, a - ni - mas — fi - de - li - um *f* a - ni - mas fi -

de - li - um de - fun - cto - rum. Do - mi - ne a - ni - mas fi -

**4**

de - li - um. ab om - ni vin - cu - lo de - li - cto - rum

**11**

**Tutti**

*f* et - lu - cis æ - ter - næ

be - a - ti - tu - di - ne per - frui.

**4**

Bass

# Sequentia

## Requiem Mass

Rafael Sales Arantes (1980 - )  
Composto de 03/09/03 a 31/12/04

**Allegro**

*ff* Di - es i - ræ di - es il - la sol - vet sæ-clum in fa -  
vi - la tes - te Da - vid cum Si - byl - la. *mp* Quan - tus tre - mor est fu -  
tu - rus quan - do ju - dex est ven - tu - rus *f* cun - cta stri - cte dis - cus -  
su - rus. Tu - ba mi - rum spar - gens so - num per se -  
pul - cra re - gi - o - num co - get om - nes an - te thro - num.

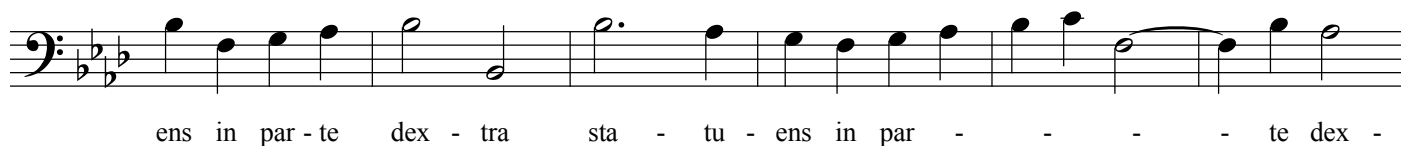
**Andante**  
Solo

*p* Mors stu - pe - bit et na - tu - ra cum re - sur - get cre - a - tu - ra ju - di -  
ca - ti res - pon - su - ra 17 cum vix jus - tus sit se - cu - rus?

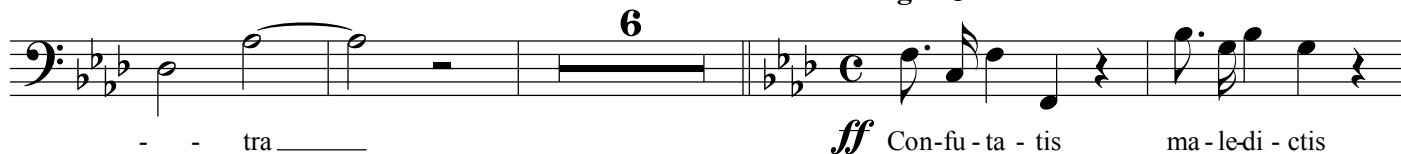
**Allegro assai**

3 Tutti *ff* Rex tre - men - dæ ma - jes - ta - tis qui sal -  
van - dos sal - vas gra - tis sal - va me *mf* sal - va me

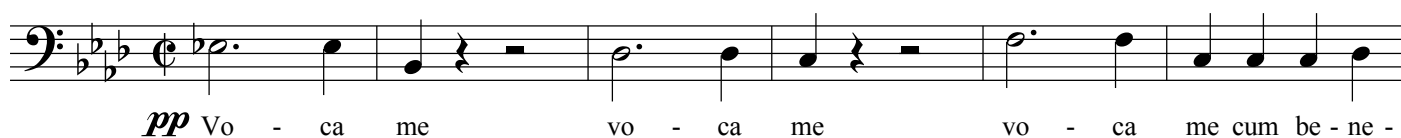
ta et ab hæ - dis me se - ques - tra sta - tu -



**Allegro** ♩ = 110



**Largo** ♩ = 30

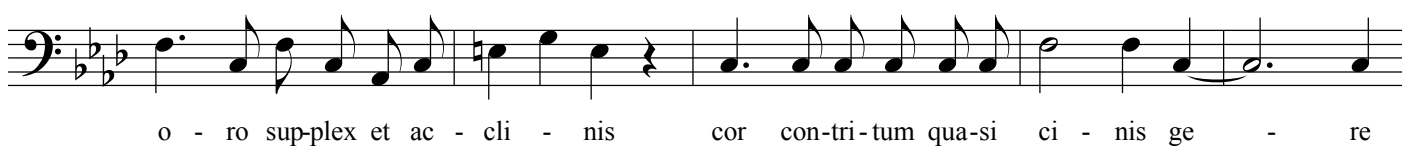
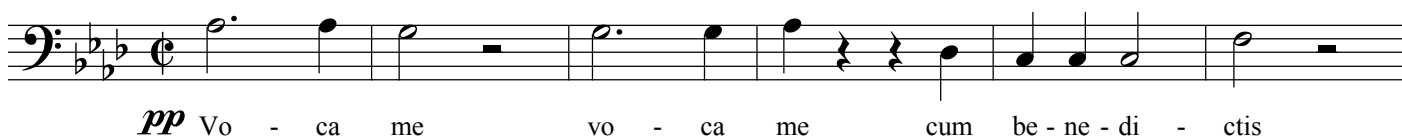


**Allegro** ♩ = 110





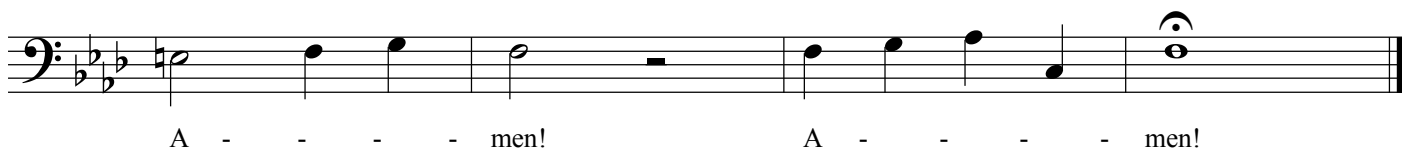
**Largo**  $\text{♩} = 30$



**Andante**  $\text{♩} = 60$



*rit.*





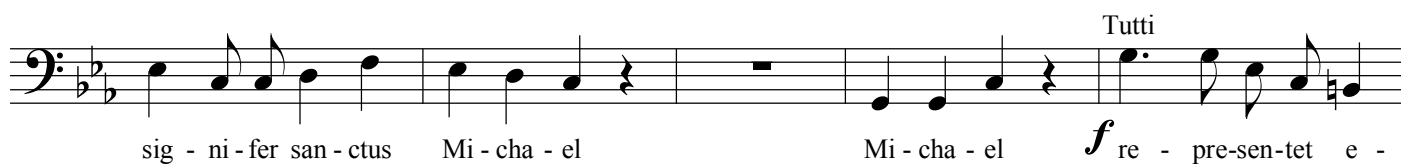
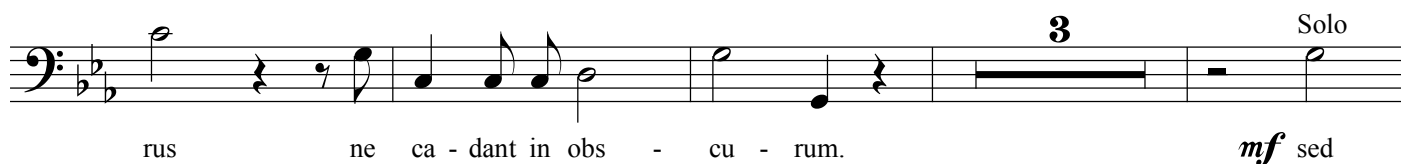
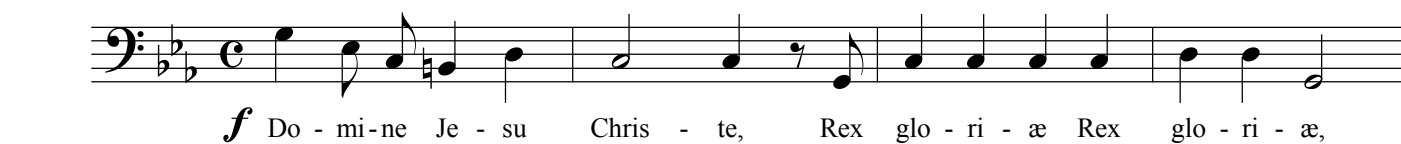
# Ofertorium

Bass

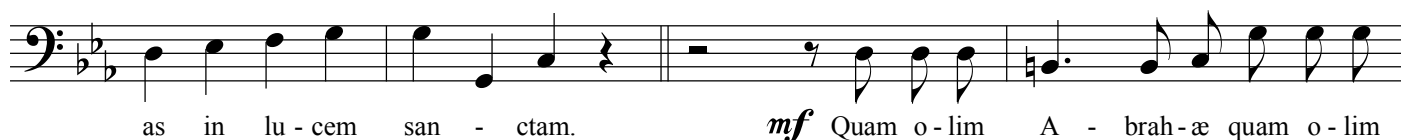
## Requiem Mass

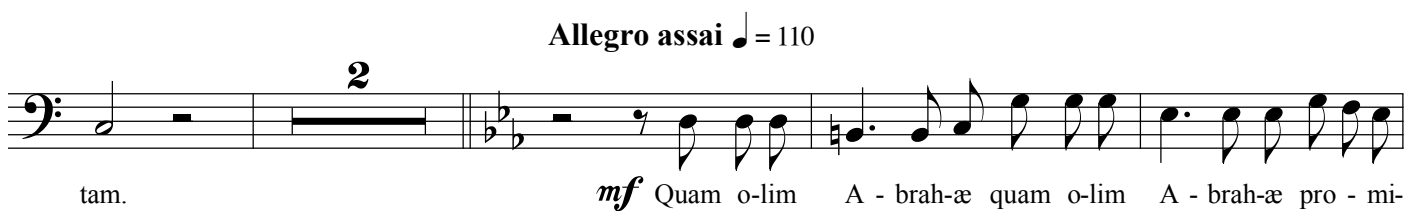
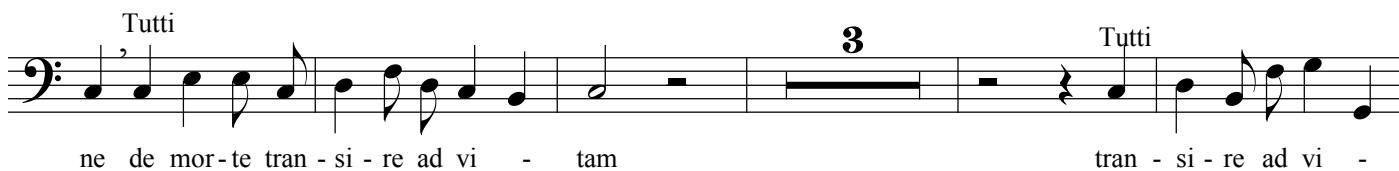
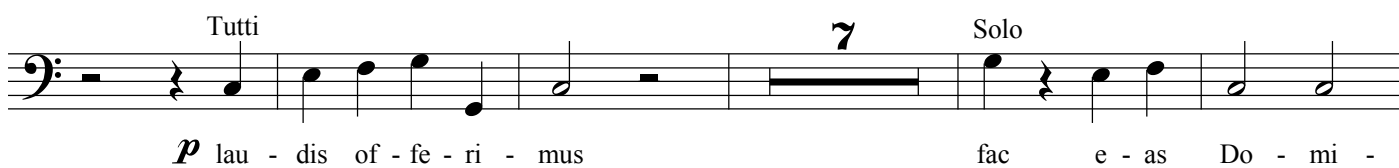
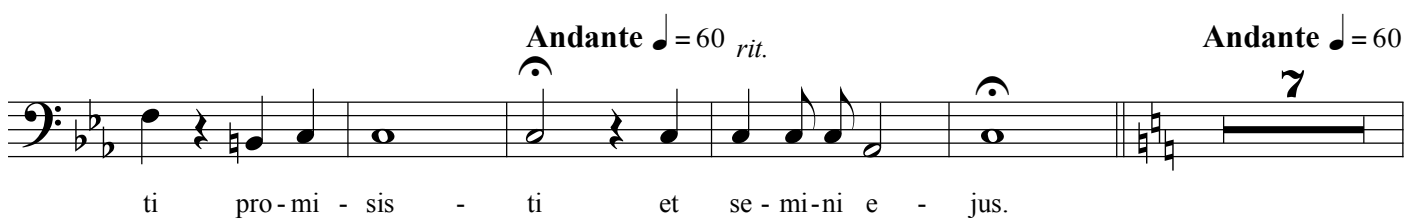
Rafael Sales Arantes (1980 - )  
Composto de 03/09/03 a 31/12/04

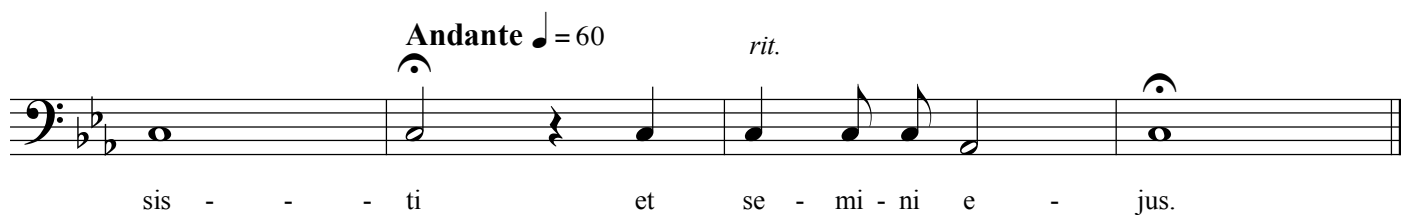
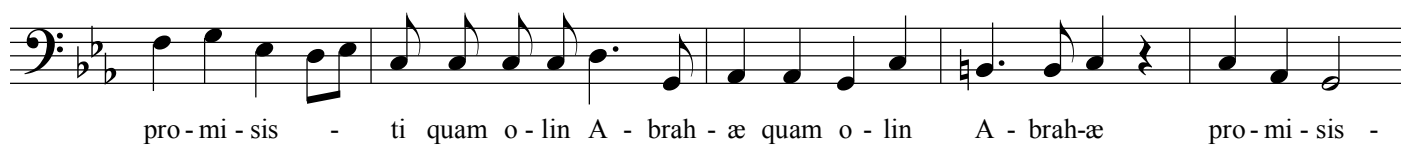
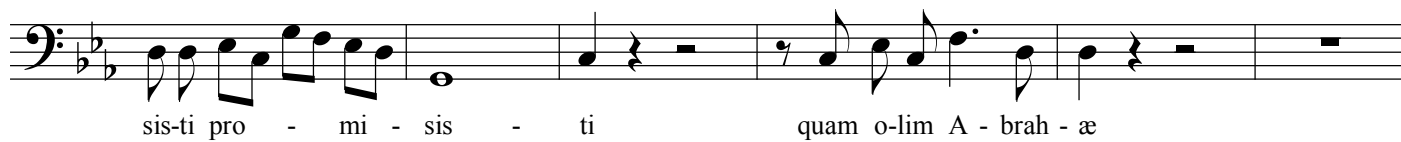
**Allegro assai** ♩ = 110



**Allegro assai** ♩ = 110







Bass

# Sanctus

## Requiem Mass

Rafael Sales Arantes (1980 - )  
Composto de 03/09/03 a 31/12/04

Andante ♩ = 60

*f* San - ctus, San - ctus, San - ctus Do - mi - nus

De - us De - us Sa - ba - oth San - ctus Do - mi - nus De - us De - us Sa - ba - oth

Ple - ni sunt cœ - li et ter - ra glo - ri - a tu - a *pp* tu - a.

Vivo ♩ = 130

*f* Ho - san - na in ex - cel - sis! Ho - san - na in ex - cel - sis! Ho - san - na in ex -

cel - sis! Ho - san - na in ex - cel - sis! Ho - san - na in ex - cel - sis! In ex - cel - - -

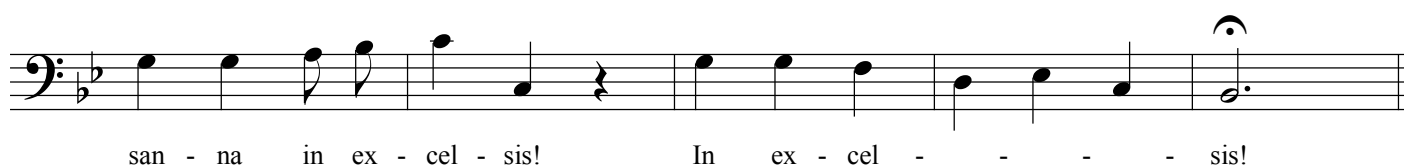
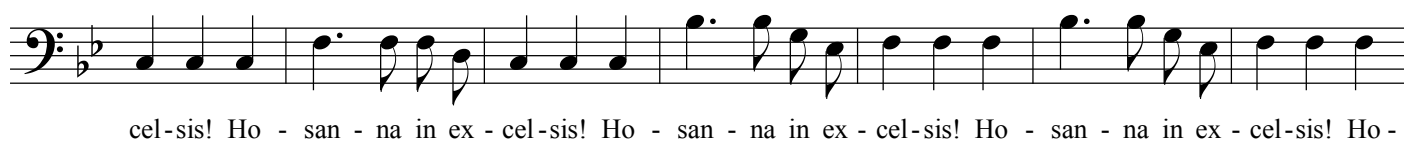
Lento ♩ = 30

sis!

*p* Be - ne - di - ctus, be - ne - di - ctus be - ne - di -



**Vivo** ♩ = 130



**Rafael Sales Arantes (1980 - )**  
Composto de 03/09/03 a 31/12/04

tol - lis pec-ca - ta — mun - di, *ff* A - gnus Dei qui tol-lis pec - ca-ta mun - di,

do - na eis re - qui - em *f* A - gnus De - i A-gnus De - i, *p* qui

tol - lis pec-ca - ta mun - di, do - na eis re - qui-em. *ff* A - gnus De - i

A - gnus — De - i, qui tol - lis pec - ca - ta mun - di *p* do - na eis re - qui -

em *pp* sem - pi - ter - - - - nam.

# Comunio

15

Bass

## Requiem Mass

Rafael Sales Arantes (1980 - )  
Composto de 03/09/03 a 31/12/04

Andante cantabile ♩ = 60

8 14

*mf* Lux ae - ter - na lu - ce - at

e - is, Do - mi - ne, Do - mi - ne. Cum San - ctis tu - is in ae - ter - num

5

qui - a pi - us es. *f* Re - qui - em æ - ter - nam do - na eis

Do - mi - ne et lux per - pe - tu - a *pp* lu - ce - at eis.

Cum san - ctis tu - is in ae - ter - num *ppp* qui - a pi - us es.

# Libera me, Domine

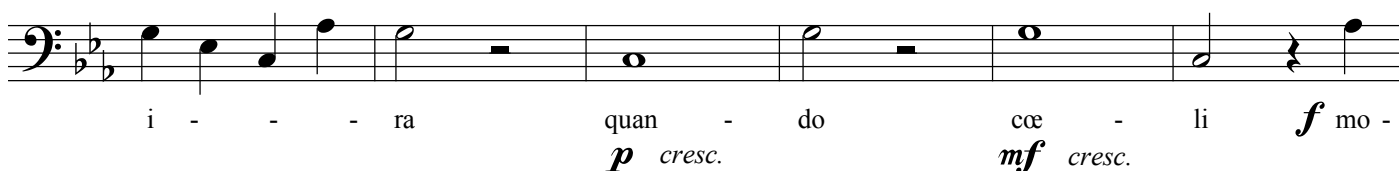
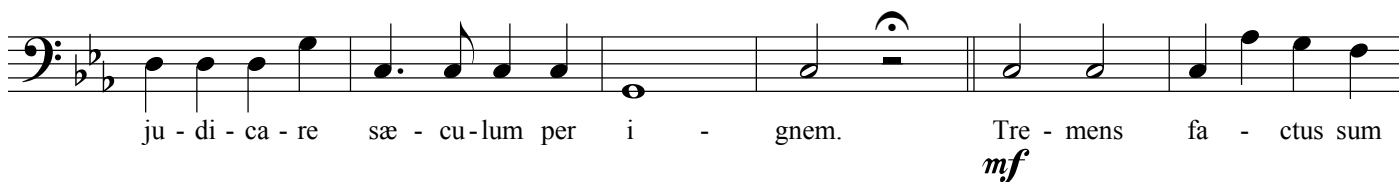
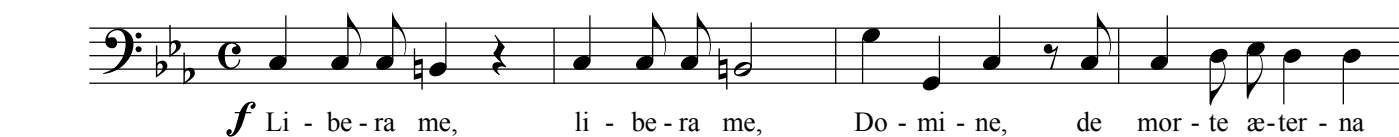
Bass

## Requiem Mass

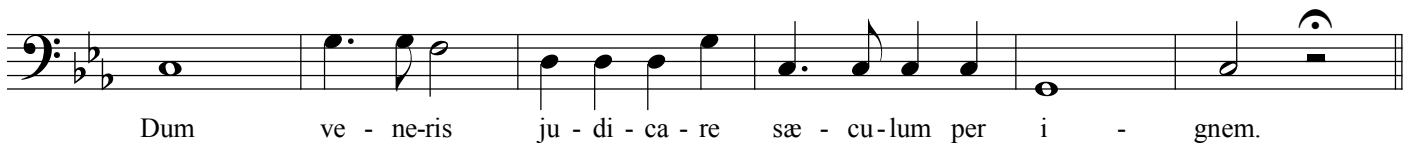
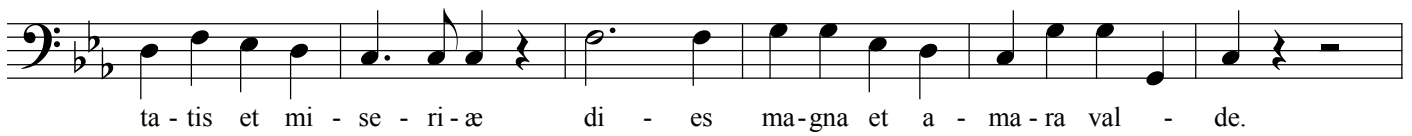
Rafael Sales Arantes (1980 - )

Composto de 03/09/03 a 31/12/04

Allegro ♩ = 120







**Andante** ♩ = 60



**Allegro** ♩ = 120

