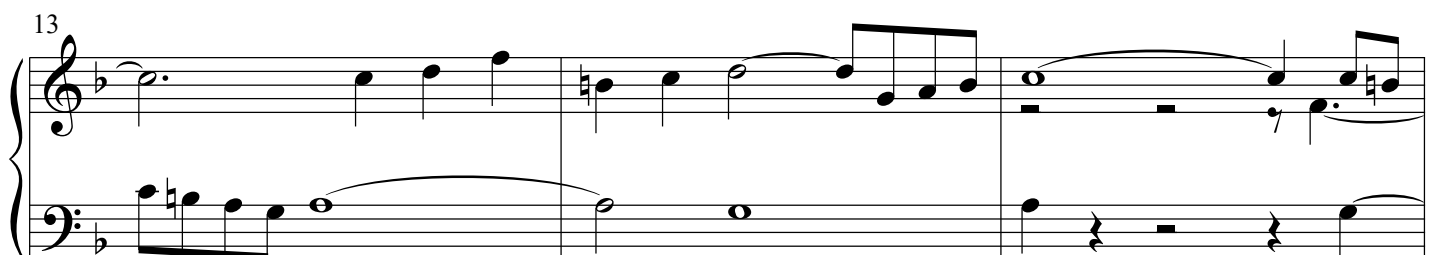
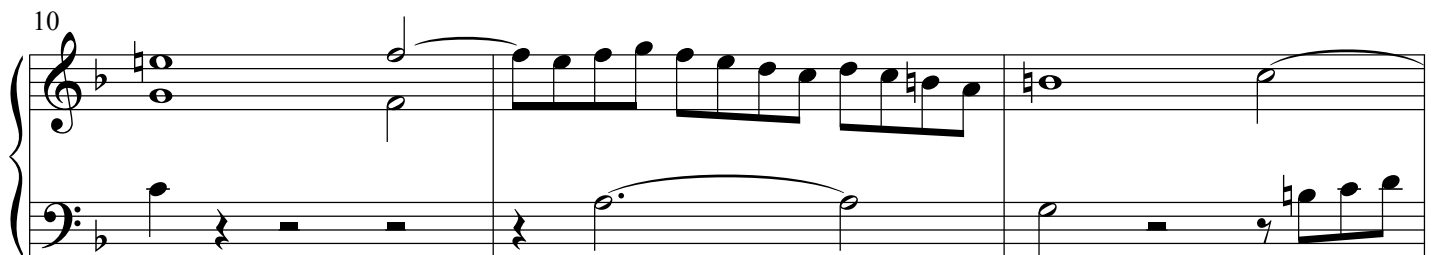
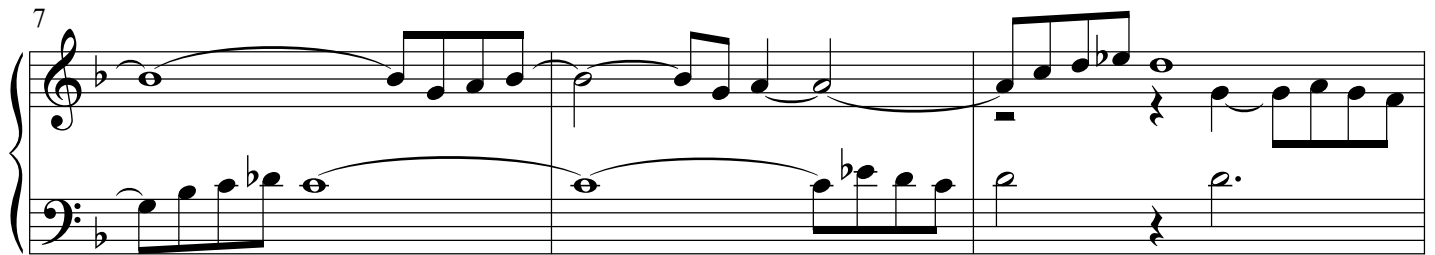
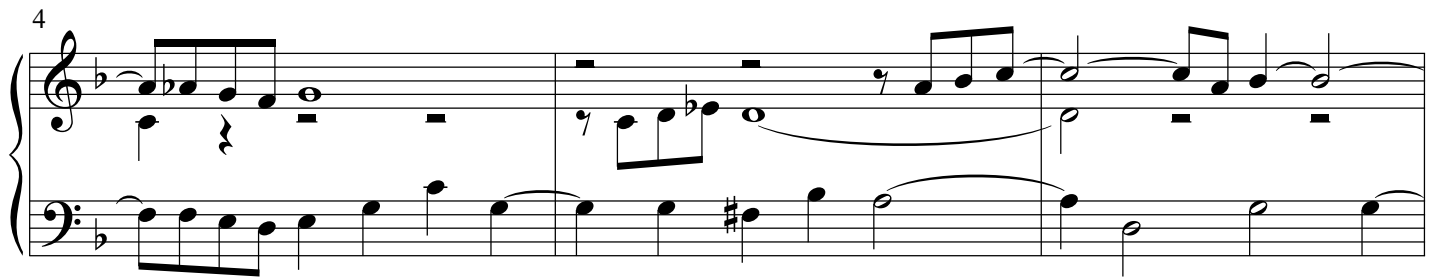
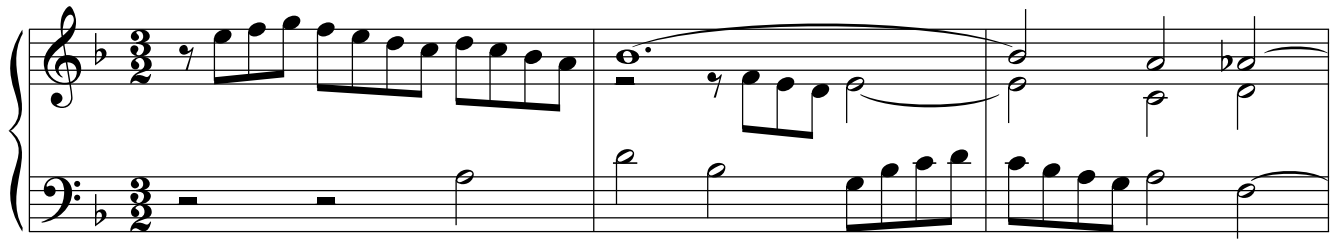


Praeludium et Fuga XI

BWV 880

J. SEBASTIAN BACH

PETER H. BESSELING



Praeludium et Fuga XI - PIANO I

16

Musical score for 'The Rose Tree' (Meisterlied). The score is in 3/4 time, key of B-flat major (two flats). It consists of three measures. The first measure shows the treble and bass staves with a treble clef and a bass clef. The melody in the treble staff begins with a half note G4, followed by a quarter note A4, and a half note Bb4. The bass staff has a half note F3. The second measure continues the melody in the treble staff with a quarter note C5, a quarter note D5, a quarter note E5, a quarter note F5, a quarter note G5, a quarter note A5, and a half note Bb5. The bass staff has a half note G3. The third measure shows the treble staff with a half note Bb5, followed by a quarter note C6, a quarter note D6, a quarter note E6, a quarter note F6, a quarter note G6, a quarter note A6, and a half note Bb6. The bass staff has a half note F3. The score is labeled '16' in the top left corner.

19

Example 19 shows measures 19–21. The melody in the treble clef continues with a half note G4, a half note F4, and a half note E4. The bass line in the bass clef features a half note G3, a half note F3, and a half note E3. The key signature remains one flat (B-flat major/E-flat minor).

22

Example 12-12


25

This block contains measures 25 through 28 of the musical score. Measure 25 features a treble clef with a key signature of one flat and a common time signature. The melody begins with a quarter rest, followed by a quarter note G4, an eighth note A4, and a quarter note Bb4. The bass line starts with a half note G3, followed by a quarter rest and a quarter note Bb3. Measure 26 continues the melody with a quarter note C5, an eighth note Bb4, and a quarter note A4. The bass line has a half note Bb3, followed by a quarter rest and a quarter note G3. Measure 27 shows the melody with a quarter note G4, an eighth note F4, and a quarter note E4. The bass line has a half note F3, followed by a quarter rest and a quarter note D3. Measure 28 concludes the section with a quarter note D4, an eighth note C4, and a quarter note Bb3. The bass line has a half note Bb3, followed by a quarter rest and a quarter note G3.

29

This block contains measures 29 through 32 of the musical score. Measure 29 features a treble staff with a melodic line starting on G4 and a bass staff with a supporting line starting on G2. Measure 30 continues the melody in the treble and adds a new line in the bass. Measure 31 shows a continuation of the melodic pattern. Measure 32 concludes the section with a final melodic phrase in the treble and a sustained bass note.

32



35

Measures 35-38. The piece is in B-flat major (two flats). Measure 35 features a half note B-flat in the treble and a half note B-flat in the bass. Measure 36 has a half note D in the treble and a half note D in the bass. Measure 37 has a half note E in the treble and a half note E in the bass. Measure 38 has a half note F in the treble and a half note F in the bass.

39

Measures 39-41. Measure 39 has a half note G in the treble and a half note G in the bass. Measure 40 has a half note A in the treble and a half note A in the bass. Measure 41 has a half note B in the treble and a half note B in the bass.

42

Measures 42-44. Measure 42 has a half note C in the treble and a half note C in the bass. Measure 43 has a half note D in the treble and a half note D in the bass. Measure 44 has a half note E in the treble and a half note E in the bass.

45

Measures 45-48. Measure 45 has a half note F in the treble and a half note F in the bass. Measure 46 has a half note G in the treble and a half note G in the bass. Measure 47 has a half note A in the treble and a half note A in the bass. Measure 48 has a half note B in the treble and a half note B in the bass.

49

Measures 49-51. Measure 49 has a half note C in the treble and a half note C in the bass. Measure 50 has a half note D in the treble and a half note D in the bass. Measure 51 has a half note E in the treble and a half note E in the bass.

52

Measures 52-54. Measure 52 has a half note F in the treble and a half note F in the bass. Measure 53 has a half note G in the treble and a half note G in the bass. Measure 54 has a half note A in the treble and a half note A in the bass.

55

Measures 55-57 of the Praeludium et Fuga XI. The music is in G minor (one flat) and 3/4 time. Measure 55 features a treble staff with a half note G4, a quarter note A4, and a half note Bb4, with a bass staff accompaniment of a half note G2 and a half note Bb2. Measure 56 continues with a treble staff half note C5 and a half note D5, and a bass staff half note C3 and a half note E3. Measure 57 shows a treble staff half note E5 and a half note F5, with a bass staff half note F2 and a half note A2.

58

Measures 58-60. Measure 58 has a treble staff half note G5 and a half note A5, with a bass staff half note G2 and a half note Bb2. Measure 59 features a treble staff half note Bb5 and a half note C6, and a bass staff half note C3 and a half note E3. Measure 60 shows a treble staff half note D6 and a half note E6, with a bass staff half note E2 and a half note G2.

61

Measures 61-63. Measure 61 has a treble staff half note F6 and a half note G6, with a bass staff half note G2 and a half note Bb2. Measure 62 features a treble staff half note A6 and a half note Bb6, and a bass staff half note C3 and a half note E3. Measure 63 shows a treble staff half note C7 and a half note D7, with a bass staff half note E2 and a half note G2.

64

Measures 64-66. Measure 64 has a treble staff half note E6 and a half note F6, with a bass staff half note G2 and a half note Bb2. Measure 65 features a treble staff half note G6 and a half note A6, and a bass staff half note C3 and a half note E3. Measure 66 shows a treble staff half note Bb6 and a half note C7, with a bass staff half note E2 and a half note G2.

67

Measures 67-69. Measure 67 has a treble staff half note D7 and a half note E7, with a bass staff half note G2 and a half note Bb2. Measure 68 features a treble staff half note F7 and a half note G7, and a bass staff half note C3 and a half note E3. Measure 69 shows a treble staff half note A7 and a half note Bb7, with a bass staff half note E2 and a half note G2.

70

Measures 70-72. Measure 70 has a treble staff half note C8 and a half note D8, with a bass staff half note G2 and a half note Bb2. Measure 71 features a treble staff half note E8 and a half note F8, and a bass staff half note C3 and a half note E3. Measure 72 shows a treble staff half note G8 and a half note A8, with a bass staff half note E2 and a half note G2.

Fuga

Measures 1-6 of the Fuga section. The music is in 6/16 time and B-flat major. The right hand features a melodic line with eighth and sixteenth notes, while the left hand provides a steady bass line with eighth notes.

Measures 7-12 of the Fuga section. The right hand continues the melodic development with various intervals and rests, while the left hand maintains a consistent eighth-note accompaniment.

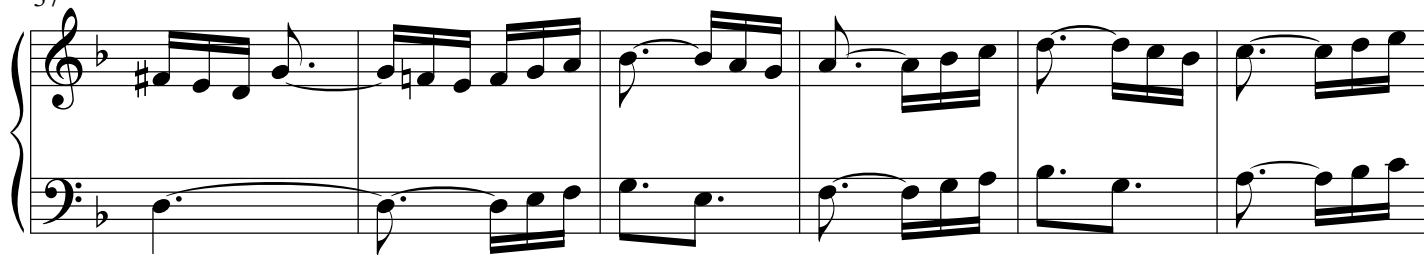
Measures 13-18 of the Fuga section. The right hand introduces more complex rhythmic patterns, including triplets and sixteenth-note runs, while the left hand continues its eighth-note accompaniment.

Measures 19-24 of the Fuga section. The right hand features a series of eighth-note runs and rests, while the left hand continues with a steady eighth-note accompaniment.

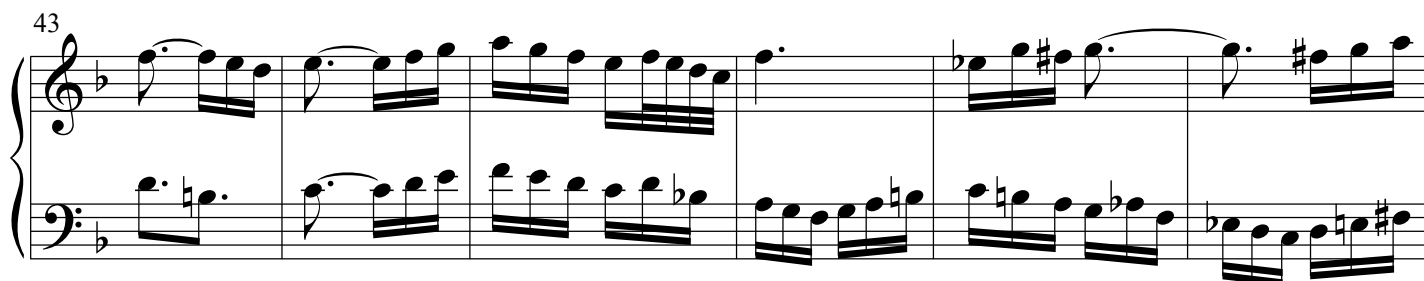
Measures 25-30 of the Fuga section. The right hand continues with a melodic line of eighth and sixteenth notes, while the left hand provides a consistent eighth-note accompaniment.

Measures 31-36 of the Fuga section. The right hand features a series of eighth-note runs and rests, while the left hand continues with a steady eighth-note accompaniment.

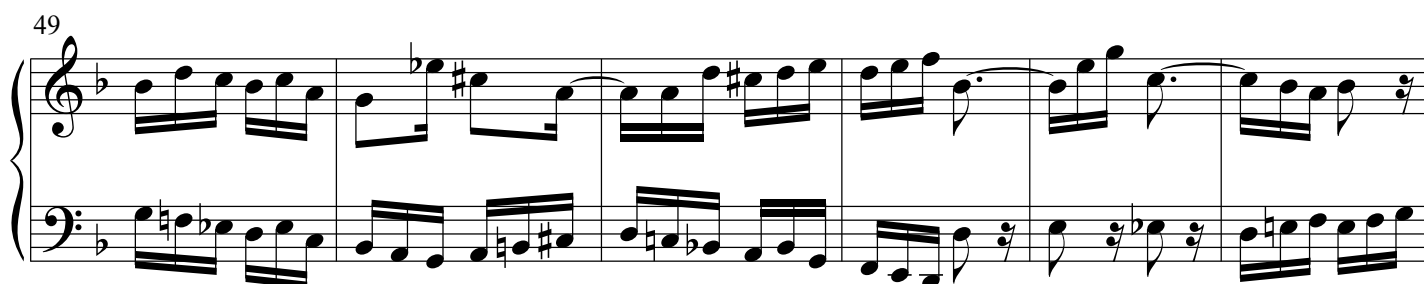
37



43



49



55



61



67



72

78

84

89

94