

Voluntary in D

For Trumpet & Organ

John Stanley (1712-1786)

Arr. Michel Rondeau

Andante Maestoso (♩ = circa 104)

Trumpet in C

Organ

C Tpt.

Org.

2
9

Voluntary in D

C Tpt.

Org.

This system contains measures 2 through 9 of the piece. The C Trumpet part begins with a melodic line in measure 2, featuring a trill (tr) in measure 4. The Organ part provides harmonic support with chords and moving lines in both staves. The bass line starts in measure 9 with a series of eighth notes.

15

C Tpt.

Org.

This system contains measures 15 through 19. The C Trumpet part is mostly silent, with rests in measures 15-19. The Organ part continues with complex textures, including a trill in the right hand of measure 15 and a long melodic line in the left hand. The bass line features a steady eighth-note pattern.

20

C Tpt.

Org.

This system contains measures 20 through 24. The C Trumpet part has rests in measures 20-23 and enters in measure 24 with a melodic phrase. The Organ part features trills (tr) in measures 20 and 22. The bass line continues with eighth-note patterns and some rests.

Voluntary in D

3

C Tpt.

Org.

This system contains measures 26 through 30. The C Tpt. part begins with a trill on D4 in measure 26, followed by a melodic line with eighth and sixteenth notes. The Organ part features a complex texture with chords and moving lines in both staves, including a long melodic line in the right hand and a more active bass line. Measure 30 ends with a trill on D4 in the C Tpt. part.

C Tpt.

Org.

This system contains measures 31 through 35. The C Tpt. part has a trill on D4 in measure 31, then rests for the remainder of the system. The Organ part continues with intricate textures, featuring a trill on D4 in the right hand in measure 34. The bass line remains active throughout.

C Tpt.

Org.

This system contains measures 36 through 40. The C Tpt. part has rests in measures 36-39 and then plays a short melodic phrase in measure 40. The Organ part features a trill on D4 in the right hand in measure 37, followed by a melodic line with eighth and sixteenth notes. The bass line continues with a steady eighth-note pattern.

4
42 Voluntary in D

C Tpt.

Org.

This system contains measures 42 through 47. The C Tpt. part features a melodic line with grace notes and slurs. The Organ part consists of two staves: the right staff has a treble clef and the left staff has an alto clef, both playing chords and single notes. The bass line continues the harmonic foundation.

48

C Tpt.

Org.

This system contains measures 48 through 53. The C Tpt. part includes a trill (tr) in measure 48. The Organ part continues with complex chordal textures in both staves. The bass line provides a steady accompaniment.

54

C Tpt.

Org.

This system contains measures 54 through 59. The C Tpt. part has a more active melodic line. The Organ part features dense chordal accompaniment. The bass line continues with a consistent rhythmic pattern.

Voluntary in D

5

60

C Tpt.

Org.

60

60

65

C Tpt.

Org.

65

65

70

C Tpt.

Org.

70

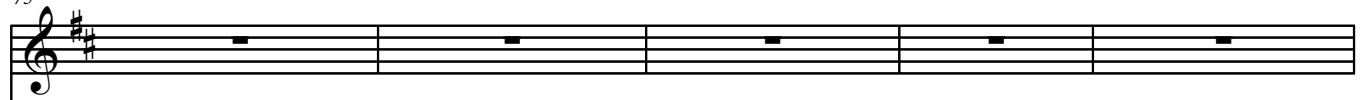
70

6

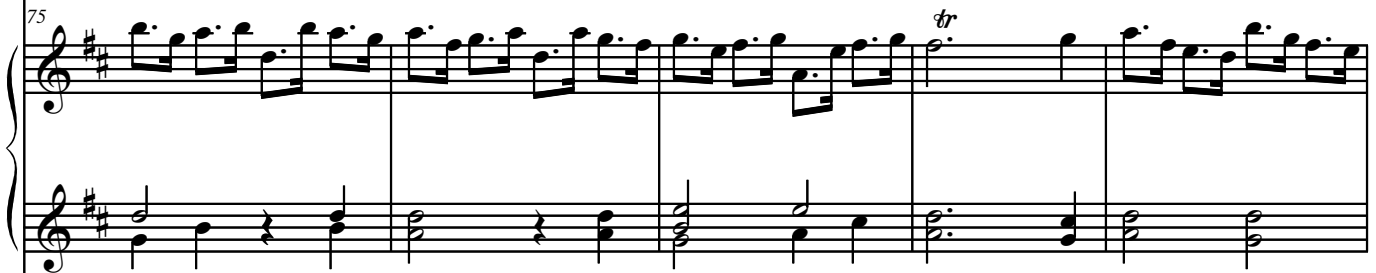
Voluntary in D

75

C Tpt.



Org.



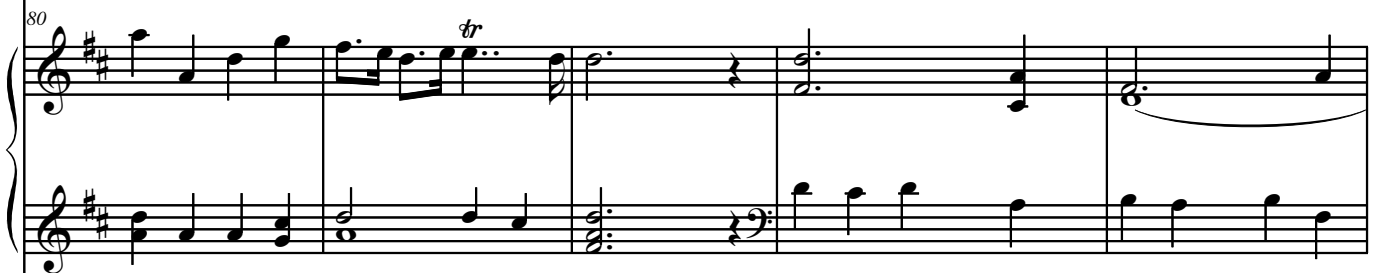
75



C Tpt.



Org.



80



C Tpt.



Org.



85



89

C Tpt.

Org.

This system contains measures 89 through 93. The C Tpt. part features a melodic line with trills in measures 89, 91, and 93. The Organ part consists of a two-staff texture with chords and moving lines in both hands. The lower staff of the Organ part is empty in measures 89-92 and contains a few notes in measure 93.

94

C Tpt.

Org.

This system contains measures 94 through 97. The C Tpt. part has a melodic line with a trill in measure 95 and ends with a double bar line in measure 97. The Organ part continues with a two-staff texture, featuring chords and moving lines. The lower staff of the Organ part is empty in measures 94-95 and contains a few notes in measures 96 and 97.