

Violoncello Solo

Cello Concerto

in A minor, Op. 129

Edited by
Orfeo MandozziComposed 10-24 October 1850. First Perf. 9 June 1860
Leipzig Conservatory. Ludwig Ebert, CelloRobert Schumann
(1810-1856)

Nicht zu schnell
4

10 15 21 26 30 33 54 61

p *(mf)* *(p)* *f* *cresc.* *sf* *fp* *cresc.* *sf* *sf* *ten.* *fp* *(p)*

A **15** **2**

Violoncello Solo

2
68

73

77

82

86

90

93

97

110

116

122

133

f

cresc.

p

sf

f

p

II

f

sf

fp

fp

sfz(p)

C

p

sf(mf)

sf(f)

p

sfp

ten.

marcato

Violoncello Solo

138 **D** *sfz* *p* *p* (a tempo) *cresc.* *p* (a tempo)

146 *sfz* *p* *p* *cresc.* *p* (a tempo)

154 *sfz* *p* *p* *cresc.* *p* (a tempo)

161 *sfz* *p* *p* *cresc.* *p* (a tempo)

166 *sfz* *p* *p* *cresc.* *p* (a tempo)

170 **E** *sfz* *p* *p* *cresc.* *p* (a tempo)

174 *sfz* *p* *p* *cresc.* *p* (a tempo)

179 *sfz* *p* *p* *cresc.* *p* (a tempo)

186 *sfz* *p* *p* *cresc.* *p* (a tempo)

191 *sfz* *p* *p* *cresc.* *p* (a tempo)

198 *sfz* *p* *p* *cresc.* *p* (a tempo)

202 **F** *sfz* *p* *p* *cresc.* *p* (a tempo)

12

Violoncello Solo

218

224

225

244

p

252

0 1 tr 2 1 1 2

258

f *f* *f* *f*

264 **G** 4 **15** **2** **Etwas zurückhaltend**

fp

Violoncello Solo

5

Langsam (♩=63)

1 *p mit ausdrück* *fp* *sfp* *p dolce*

7 *fp* *sfp*

15 *fp* *fp* *p dolce*

22 *fp* *sfp*

29 *fp*

Etwas lebhafter

35 *f* *sfp* *rit.* **Tempo I°**

44 *f cresc.* *f* *sf* *f* **Schneller** *più f*

51 *f* *f* **Schneller und schneller**

57 *cresc.* *(bis zum neuen tempo)* **Sehr lebhaft** ♩ = 116

61 *sf (p)* *sf (mp)* *sf (f)*

68 *sf* **I** **6**

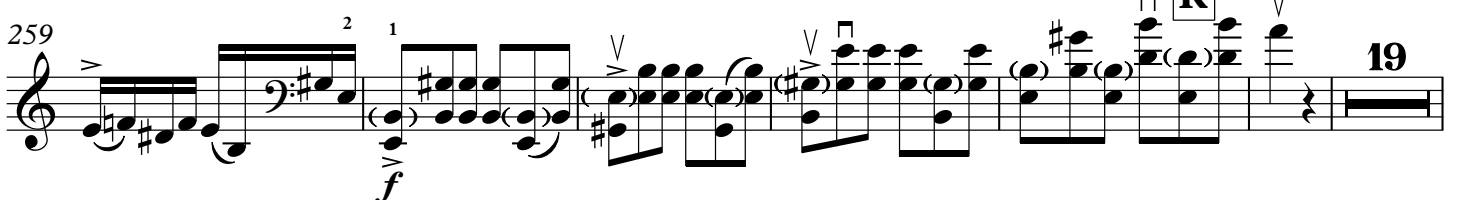
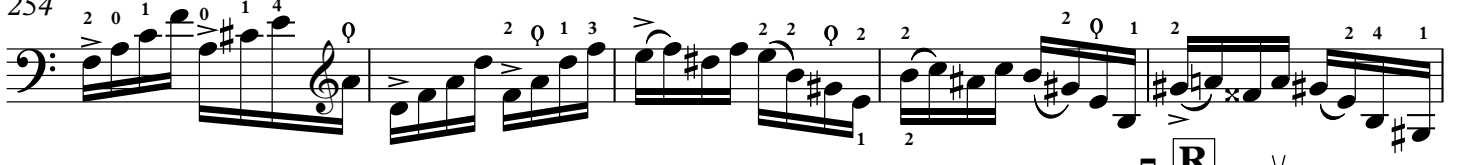
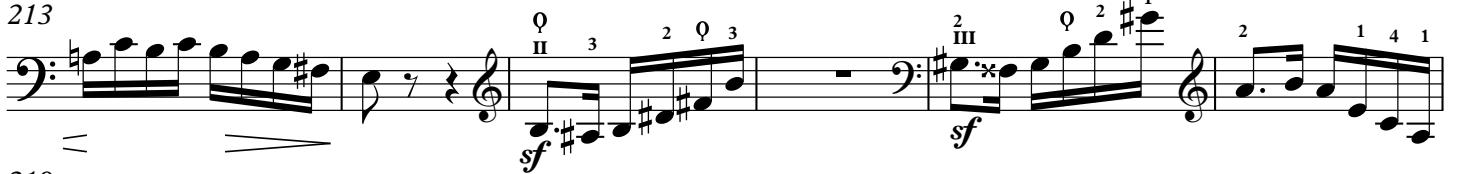
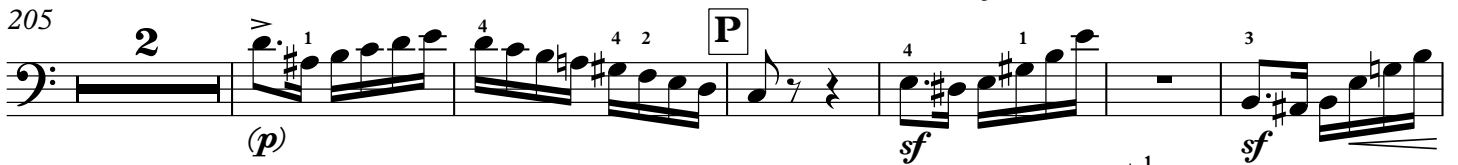
Violoncello Solo

[illegible]

Violoncello Solo

N

7



Violoncello Solo

8
284

292

300

309

315

333

345

353

362

367

372

379

15

Violoncello Solo

399

Cadenza

399 Cadenza

403

sf *p* *cresc.* *f*

Im Tempo

402

Im Tempo

402

p *cresc.* *sf*

406

410

Allegro

406

406

413

413

413

414

415

416

417

418

419

419

cresc.

426

[illegible]

431

431

The musical score for Example 431 consists of two staves. The left staff is in bass clef with a key signature of two sharps (F# and C#). It contains a triplet of eighth notes, followed by a triplet of sixteenth notes, and then a series of eighth notes. The right staff is in treble clef with a key signature of one sharp (F#). It begins with a triplet of eighth notes, followed by a triplet of sixteenth notes, and then a series of eighth notes. The score includes dynamic markings such as *cresc.* and *ff*, and articulation marks like accents and slurs.

436

Schneller \

436 **Schneller** ∇ ∇

4 2 1 0 3 1 1 4 0 1 2 4 0 0 1 2 1 1 1 4 1 4 1 4

immer ff

443

443

449 silent

449

silent
note

[illegible]

457

457

457

464