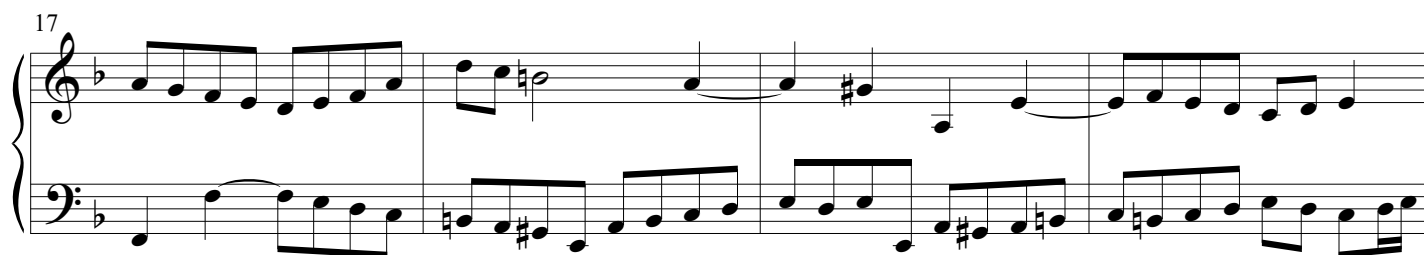
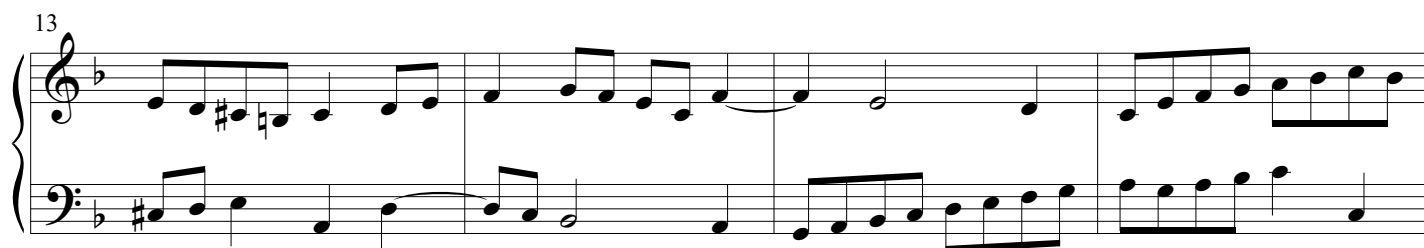
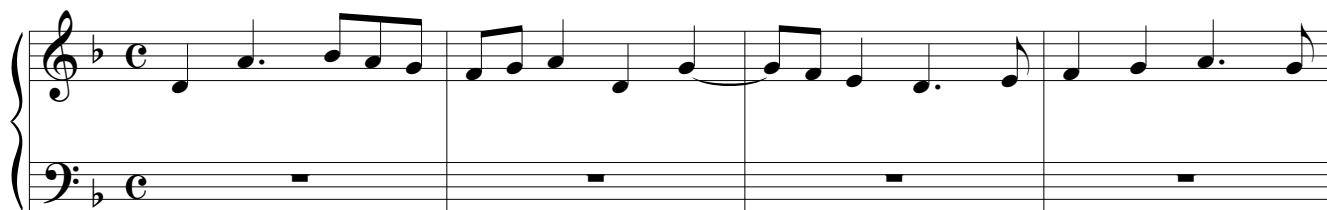


Piano II

fuga VVVV

BWV 853

J. Sebastian Bach
Arr. Peter H. Besseling



21

Measures 21-24 of the musical score. The key signature has one flat (B-flat). The melody in the right hand features eighth and quarter notes with various accidentals. The bass line consists of eighth and quarter notes, including some beamed sixteenth notes.

25

Measures 25-28 of the musical score. The right hand continues with a melodic line, while the left hand features a more active bass line with eighth and sixteenth notes.

29

Measures 29-32 of the musical score. The right hand has a melodic line with some ties, and the left hand continues with a steady eighth-note pattern.

33

Measures 33-36 of the musical score. The right hand features a melodic line with some rests, and the left hand continues with eighth-note patterns.

37

Measures 37-40 of the musical score. The right hand has a melodic line with some ties, and the left hand continues with eighth-note patterns.

41

Measures 41-44 of the musical score. The right hand features a melodic line with some ties, and the left hand continues with eighth-note patterns.

45

49

53

57

61

65

69

Measures 69-72 of the musical score. The system consists of two staves. The upper staff is in treble clef and the lower staff is in bass clef. The key signature has one flat (B-flat). Measure 69: Treble has a half note B-flat, a half note A, a quarter note G, and a quarter note F. Bass has a half note E, a half note D, a quarter note C, and a quarter note B. Measure 70: Treble has a half note E, a half note D, a quarter note C, and a quarter note B. Bass has a half note A, a half note G, a quarter note F, and a quarter note E. Measure 71: Treble has a half note D, a half note C, a quarter note B, and a quarter note A. Bass has a half note G, a half note F, a quarter note E, and a quarter note D. Measure 72: Treble has a half note C, a half note B, a quarter note A, and a quarter note G. Bass has a half note F, a half note E, a quarter note D, and a quarter note C.

73

Measures 73-76 of the musical score. The system consists of two staves. The upper staff is in treble clef and the lower staff is in bass clef. The key signature has one flat (B-flat). Measure 73: Treble has a half note B-flat, a half note A, a quarter note G, and a quarter note F. Bass has a half note E, a half note D, a quarter note C, and a quarter note B. Measure 74: Treble has a half note E, a half note D, a quarter note C, and a quarter note B. Bass has a half note A, a half note G, a quarter note F, and a quarter note E. Measure 75: Treble has a half note D, a half note C, a quarter note B, and a quarter note A. Bass has a half note G, a half note F, a quarter note E, and a quarter note D. Measure 76: Treble has a half note C, a half note B, a quarter note A, and a quarter note G. Bass has a half note F, a half note E, a quarter note D, and a quarter note C.

77

Measures 77-80 of the musical score. The system consists of two staves. The upper staff is in treble clef and the lower staff is in bass clef. The key signature has one flat (B-flat). Measure 77: Treble has a half note B-flat, a half note A, a quarter note G, and a quarter note F. Bass has a half note E, a half note D, a quarter note C, and a quarter note B. Measure 78: Treble has a half note E, a half note D, a quarter note C, and a quarter note B. Bass has a half note A, a half note G, a quarter note F, and a quarter note E. Measure 79: Treble has a half note D, a half note C, a quarter note B, and a quarter note A. Bass has a half note G, a half note F, a quarter note E, and a quarter note D. Measure 80: Treble has a half note C, a half note B, a quarter note A, and a quarter note G. Bass has a half note F, a half note E, a quarter note D, and a quarter note C.

80

Measures 81-83 of the musical score. The system consists of two staves. The upper staff is in treble clef and the lower staff is in bass clef. The key signature has one flat (B-flat). Measure 81: Treble has a half note B-flat, a half note A, a quarter note G, and a quarter note F. Bass has a half note E, a half note D, a quarter note C, and a quarter note B. Measure 82: Treble has a half note E, a half note D, a quarter note C, and a quarter note B. Bass has a half note A, a half note G, a quarter note F, and a quarter note E. Measure 83: Treble has a half note D, a half note C, a quarter note B, and a quarter note A. Bass has a half note G, a half note F, a quarter note E, and a quarter note D.

84

Measures 84-87 of the musical score. The system consists of two staves. The upper staff is in treble clef and the lower staff is in bass clef. The key signature has one flat (B-flat). Measure 84: Treble has a half note B-flat, a half note A, a quarter note G, and a quarter note F. Bass has a half note E, a half note D, a quarter note C, and a quarter note B. Measure 85: Treble has a half note E, a half note D, a quarter note C, and a quarter note B. Bass has a half note A, a half note G, a quarter note F, and a quarter note E. Measure 86: Treble has a half note D, a half note C, a quarter note B, and a quarter note A. Bass has a half note G, a half note F, a quarter note E, and a quarter note D. Measure 87: Treble has a half note C, a half note B, a quarter note A, and a quarter note G. Bass has a half note F, a half note E, a quarter note D, and a quarter note C.