

**Praeludium et Fuga XXI**

BWV 890

J. SEBASTIAN BACH

PETER H. BESSELING

4

8

11

14

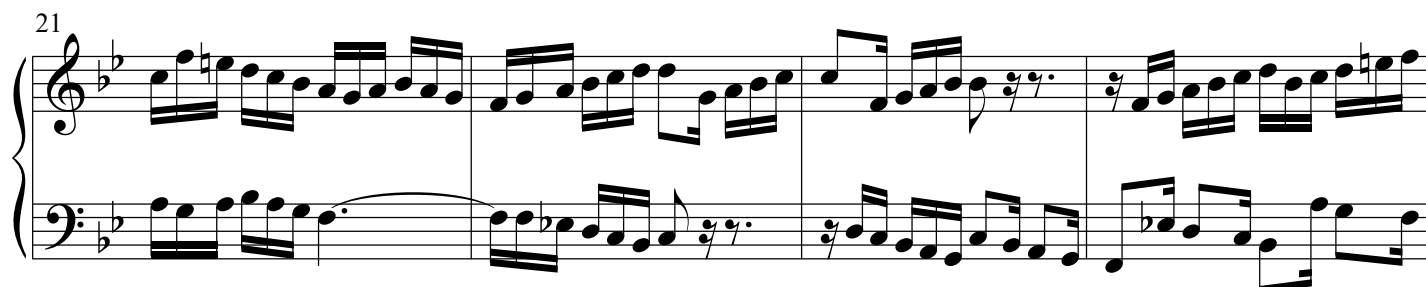
2

## Draeludium et Fuga XXI - PIANO I

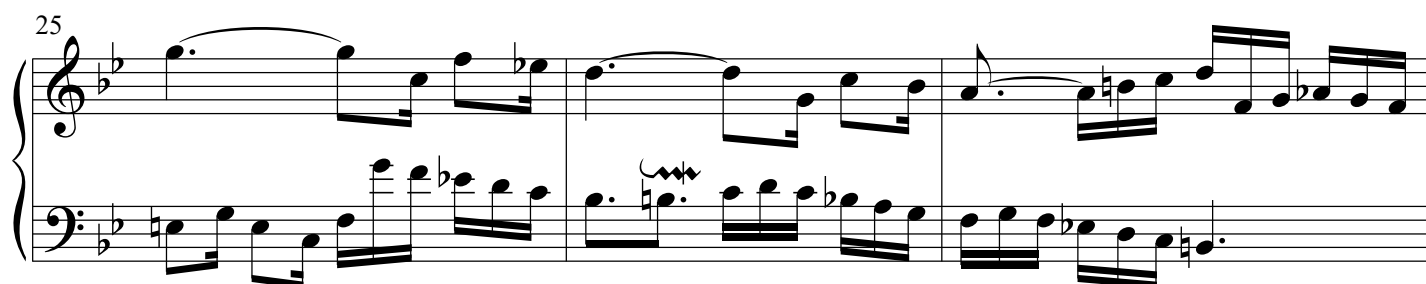
18



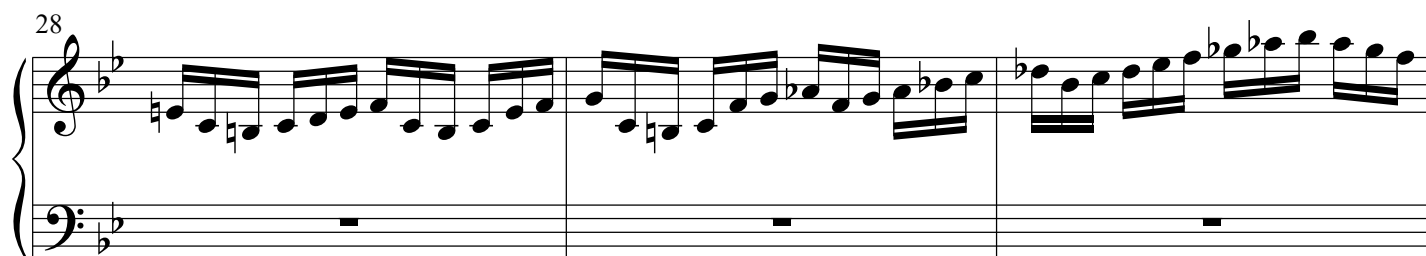
21



25



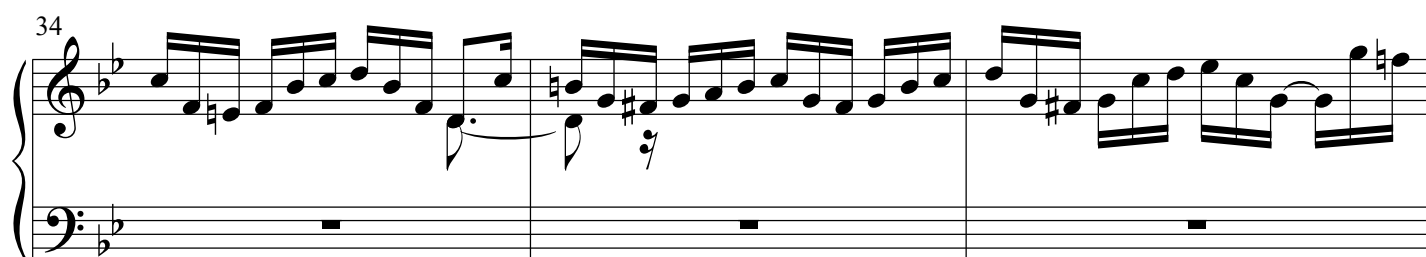
28



31



34



**Draeludium et Fuga XXI - PIANO I**

3

37

41

44

47

51

54

57

System 1, measures 57-59. The treble staff features a melodic line with a half note, a quarter note, and a half note, followed by a half note, a quarter note, and a half note. The bass staff features a continuous eighth-note accompaniment.

60

System 2, measures 60-62. The treble staff features a melodic line with a half note, a quarter note, and a half note, followed by a half note, a quarter note, and a half note. The bass staff features a continuous eighth-note accompaniment.

63

System 3, measures 63-65. The treble staff features a melodic line with a half note, a quarter note, and a half note, followed by a half note, a quarter note, and a half note. The bass staff features a continuous eighth-note accompaniment.

66

System 4, measures 66-69. The treble staff features a melodic line with a half note, a quarter note, and a half note, followed by a half note, a quarter note, and a half note. The bass staff features a continuous eighth-note accompaniment.

70

System 5, measures 70-72. The treble staff features a melodic line with a half note, a quarter note, and a half note, followed by a half note, a quarter note, and a half note. The bass staff features a continuous eighth-note accompaniment.

73

System 6, measures 73-75. The treble staff features a melodic line with a half note, a quarter note, and a half note, followed by a half note, a quarter note, and a half note. The bass staff features a continuous eighth-note accompaniment.

76

79

82

85

## Fuga

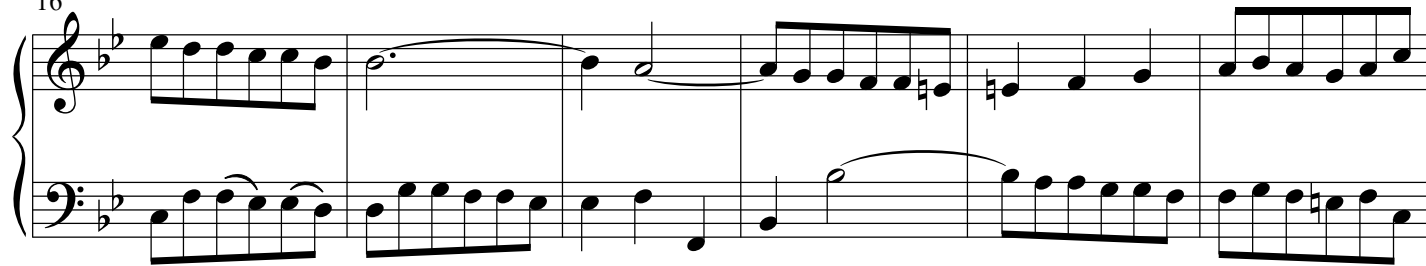
4

10

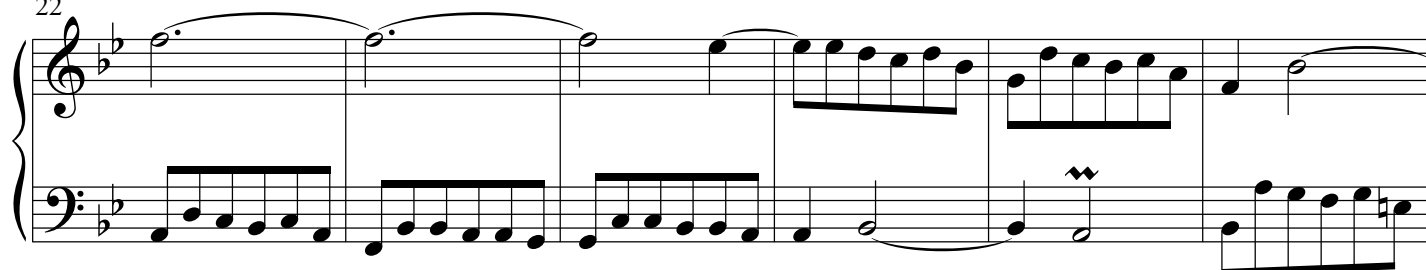
6

## Draeludium et Fuga XXI - PIANO I

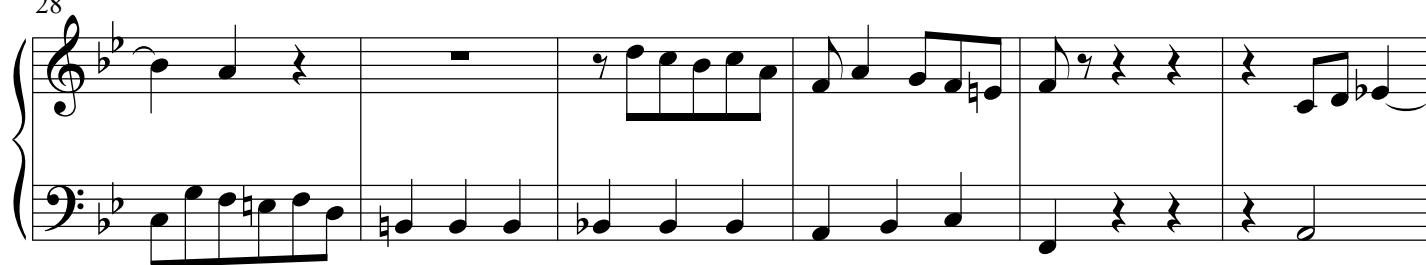
16



22



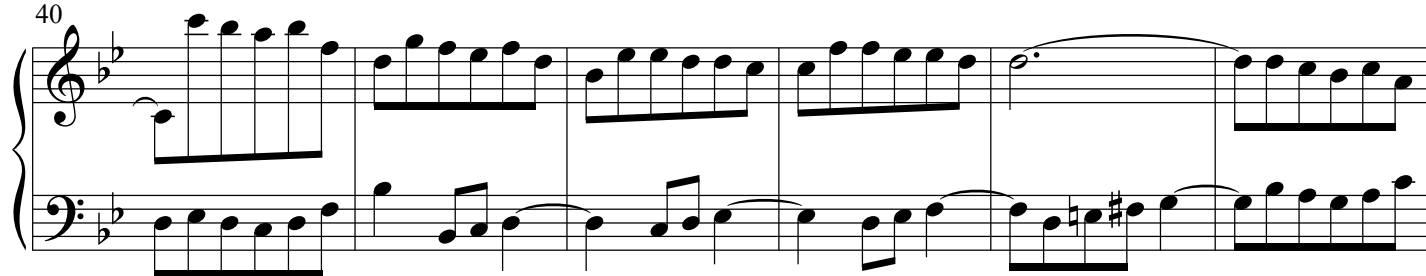
28



34



40



46



52

Measures 52-57 of the piano part. The music is in B-flat major (two flats). The right hand features a melodic line with eighth and sixteenth notes, while the left hand provides a harmonic accompaniment with eighth and sixteenth notes. A fermata is placed over the final note of measure 57.

58

Measures 58-63 of the piano part. The right hand continues the melodic development with various note values, including a half note. The left hand maintains a steady accompaniment. A fermata is placed over the final note of measure 63.

64

Measures 64-69 of the piano part. The right hand features a series of sixteenth-note runs. The left hand provides a harmonic accompaniment with eighth and sixteenth notes. A fermata is placed over the final note of measure 69.

70

Measures 70-75 of the piano part. The right hand continues the melodic development with eighth and sixteenth notes. The left hand provides a harmonic accompaniment with eighth and sixteenth notes. A fermata is placed over the final note of measure 75.

76

Measures 76-81 of the piano part. The right hand features a series of sixteenth-note runs. The left hand provides a harmonic accompaniment with eighth and sixteenth notes. A fermata is placed over the final note of measure 81.

82

Measures 82-87 of the piano part. The right hand continues the melodic development with eighth and sixteenth notes. The left hand provides a harmonic accompaniment with eighth and sixteenth notes. A fermata is placed over the final note of measure 87.

88

88