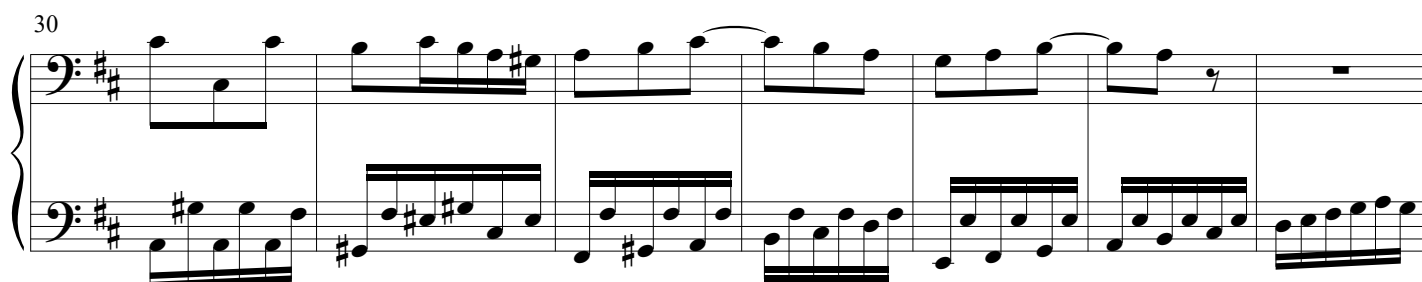
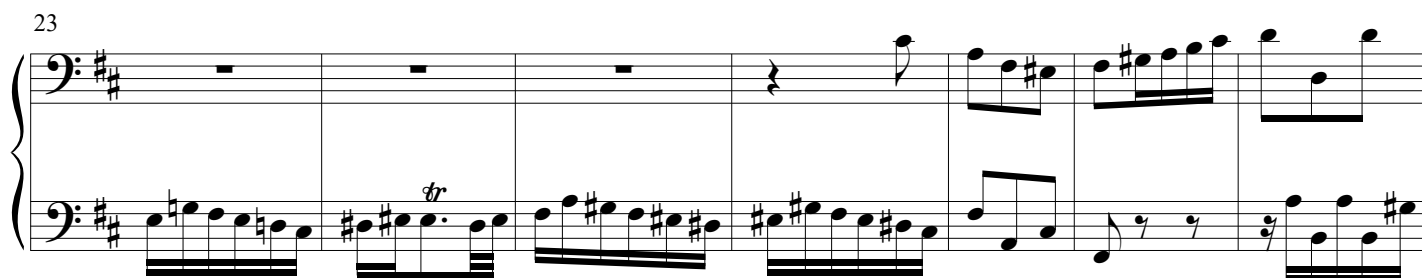
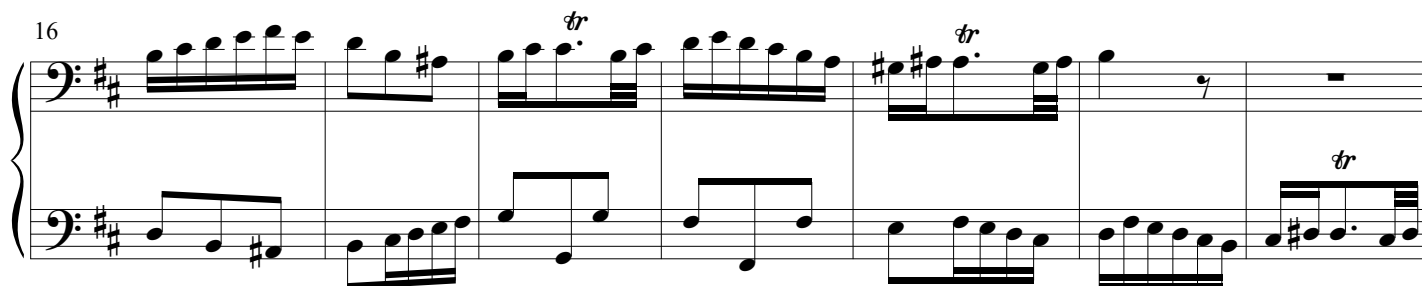
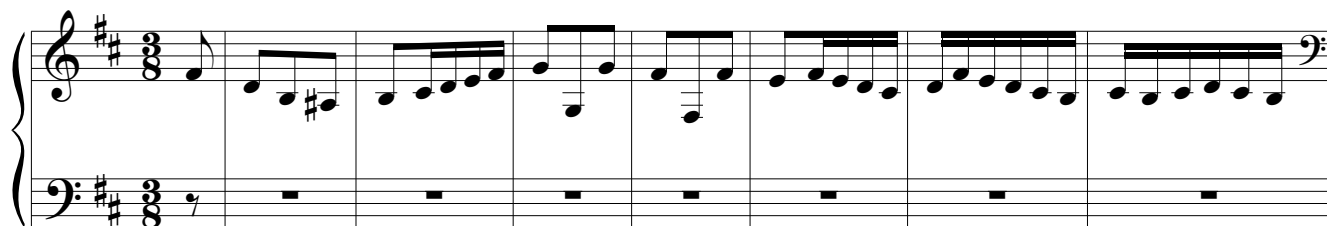


Fuga XXIV

BWV 893

J. Sebastian Bach
Arr. Peter H. Besseling



37

Measures 37-43 of the musical score. The system consists of two staves. The upper staff begins with a whole rest, followed by a series of eighth-note runs in the right hand. The lower staff features a continuous eighth-note accompaniment in the left hand.

44

Measures 44-51 of the musical score. The right hand plays a melodic line with various intervals and rests, while the left hand continues with a steady eighth-note accompaniment.

52

Measures 52-58 of the musical score. The right hand features a more complex melodic line with some beamed sixteenth notes, and the left hand maintains the eighth-note accompaniment.

59

Measures 59-66 of the musical score. The right hand has a melodic line with some ties, and the left hand continues with the eighth-note accompaniment.

67

Measures 67-75 of the musical score. The right hand plays a melodic line with some rests, and the left hand continues with the eighth-note accompaniment.

76

Measures 76-82 of the musical score. The right hand has a melodic line with some rests, and the left hand continues with the eighth-note accompaniment.

83

Measures 83-88 of the musical score. The key signature is two sharps (F# and C#). The melody in the right hand begins with a whole rest in measure 83, followed by eighth-note patterns. The bass line features a steady eighth-note accompaniment. Measure 88 ends with a fermata over the final note.

89

Measures 89-94 of the musical score. The melody continues with eighth-note and quarter-note patterns. The bass line maintains the eighth-note accompaniment. Measure 94 concludes with a fermata.

95

Measures 95-100 of the musical score. The melody features a mix of eighth and quarter notes. The bass line continues with the eighth-note accompaniment. The piece ends in measure 100 with a final whole note in the right hand and a half note in the left hand, both marked with a fermata.