

Triosonate C-dur

für zwei Altblockflöten (Violinen, Querflöten) und Basso continuo

Grave

G. Ph. Telemann

Grave

7

1. 2. Vivace

11

15

19

22

26

1. 2.

Andante

Andante

solì tutti

5 solì tutti

9 solì tutti solì tutti solì tutti

12

Xantippe

<Presto>

Musical score for Xantippe, Flauto dolce I, <Presto>. The score is written in 3/2 time and consists of eight staves of music. The key signature is one sharp (F#). The score includes various musical notations such as notes, rests, and dynamic markings. The staves are numbered 6, 11, 16, 21, 26, 30, 34, and 38. The markings "soli" and "tutti" are used to indicate solo and tutti sections. The score ends with a double bar line and a repeat sign.

Lucretia

Largo

Musical score for Lucretia, Flauto dolce I, Largo. The score is written in 3/4 time and consists of three staves of music. The key signature is two flats (Bb and Eb). The score includes various musical notations such as notes, rests, and dynamic markings. The staves are numbered 8, 15, and 22. The markings "1." and "2." are used to indicate first and second endings. The score ends with a double bar line and a repeat sign.

Corinna

<Allegretto>

Corinna <Allegretto> musical score for Flauto dolce I, measures 1-23. The score is in 3/4 time. It features alternating sections of 'soli' and 'tutti' playing. Measures 1-5 are 'soli', 6-12 are 'tutti', 13-19 are 'soli', and 20-23 are 'tutti'. The piece ends with a double bar line and repeat dots.

Clelia

<Vivace>

Clelia <Vivace> musical score for Flauto dolce I, measures 1-29. The score is in 3/4 time. It features alternating sections of 'soli' and 'tutti' playing. Measures 1-5 are 'soli', 6-14 are 'tutti', 15-19 are 'soli', 20-24 are 'tutti', 25-28 are 'soli', and 29-32 are 'tutti'. The piece ends with a double bar line and repeat dots, with first and second endings marked.

Dido



Triosonate C-dur

für zwei Altblockflöten (Violinen, Querflöten) und Basso continuo

G. Ph. Telemann

Grave

7 1. 2. Vivace

11

15

19

22

26 1. 2.

The Grave section is written for Flauto dolce II in treble clef with a 3/2 time signature. It begins with a whole note G4, followed by a half note A4, and then a series of eighth and sixteenth notes. A first ending bracket spans measures 7-10, leading to a second ending marked 'Vivace' in common time. The section continues with a series of sixteenth-note passages, including a trill in measure 11. Measure numbers 7, 11, 15, 19, 22, and 26 are indicated at the start of their respective staves. First and second endings are marked at the end of the section.

Andante

5 9 12

solì tutti soli tutti soli tutti

The Andante section is written for Flauto dolce II in treble clef with a common time signature. It features a series of sixteenth-note passages, often marked with 'solì' (solo) and 'tutti' (all). Measure numbers 5, 9, and 12 are indicated at the start of their respective staves. The section includes various ornaments and trills, and ends with a final cadence.

Xantippe

〈Presto〉

6

12

soli

tutti

17

soli

tutti

22

soli

tutti

soli

tutti

28

soli

tutti

soli

tutti

soli

34

tutti

1.

2.

Lucretia

Largo

6

11

16

1.

2.

Corinna

<Allegretto>

Corinna <Allegretto> musical score for Flauto dolce II. The score is in 2/4 time and consists of four staves. The first staff begins with a 'soli' marking and continues with a 'tutti' marking. The second staff starts at measure 6, featuring a 'soli' marking followed by a 'tutti' marking. The third staff starts at measure 13, with 'soli' and 'tutti' markings. The fourth staff starts at measure 20, marked 'tutti'. The piece concludes with a double bar line and repeat dots.

Clelia

<Vivace>

Clelia <Vivace> musical score for Flauto dolce II. The score is in 2/4 time and consists of six staves. The first staff begins with a 'soli' marking, followed by a 'tutti' marking, and then another 'soli' marking. The second staff starts at measure 6. The third staff starts at measure 11 and includes first and second endings. The fourth staff starts at measure 16, marked 'tutti'. The fifth staff starts at measure 20, with alternating 'soli' and 'tutti' markings. The sixth staff starts at measure 25. The piece concludes with a double bar line and repeat dots.

Dido

Triste soli Disperato tutti

4 6 8 10 13 15 17 19

*) Vgl. Vorwort. — Cf. preface.

Triosonate C-dur

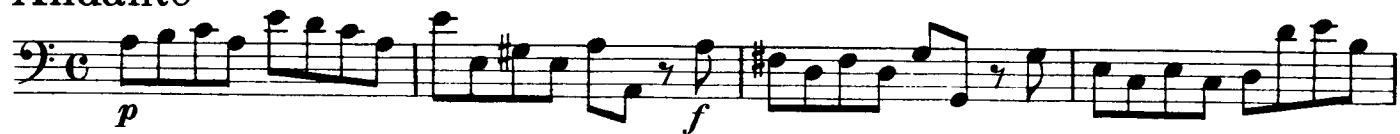
für zwei Altblockflöten (Violinen, Querflöten) und Basso continuo

G. Ph. Telemann

Grave



Andante



Xantippe

(Presto)

Musical score for Xantippe (Presto) in bass clef, 3/4 time. The score consists of seven staves of music. The first staff begins with a treble clef and a key signature of one sharp (F#). The second staff has a measure rest marked with a '7'. The third staff has a measure rest marked with a '14'. The fourth staff has a measure rest marked with a '19'. The fifth staff has a measure rest marked with a '24'. The sixth staff has a measure rest marked with a '29'. The seventh staff has a measure rest marked with a '34' and a first ending bracket labeled '1.' and a second ending bracket labeled '2.'.

Lucretia

Largo

Musical score for Lucretia (Largo) in bass clef, 3/4 time. The score consists of three staves of music. The first staff begins with a treble clef and a key signature of two flats (Bb, Eb). The second staff has a measure rest marked with an '8'. The third staff has a measure rest marked with a '14' and a first ending bracket labeled '1.' and a second ending bracket labeled '2.'.

Corinna

(Allegretto)

Musical score for Corinna (Allegretto) in bass clef, 2/4 time. The score consists of two staves of music. The first staff begins with a treble clef and a key signature of one sharp (F#). The second staff has a measure rest marked with a '9' and a first ending bracket labeled '1.' and a second ending bracket labeled '1.'.



Clelia

(Vivace)



Dido

Triste Disperato

