

Praeludium et Fuga XV

BWV 884

J. SEBASTIAN BACH

PETER H. BESSELING

5

10

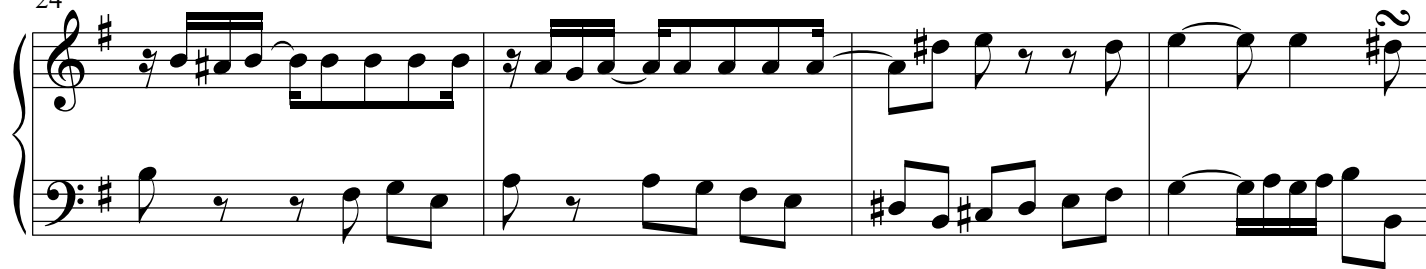
15

19

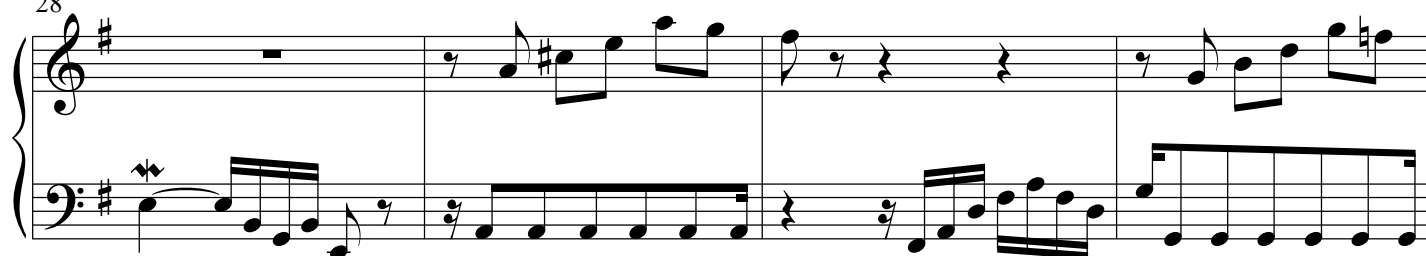
2

Draeludium et Fuga XV - PIANO II

24



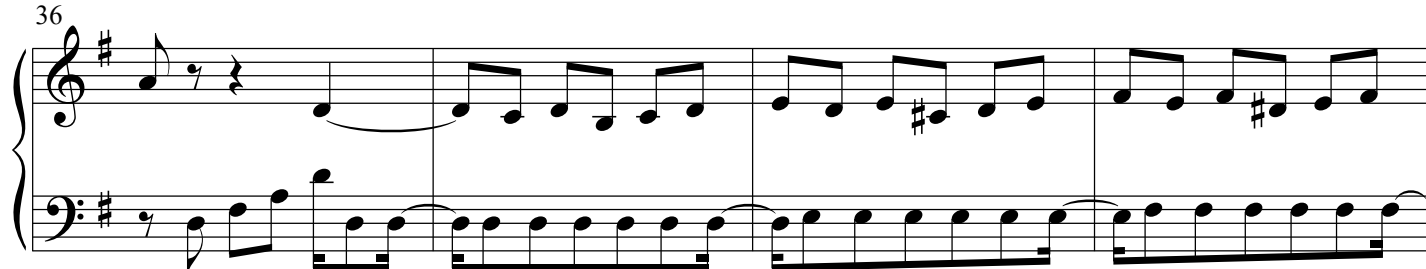
28



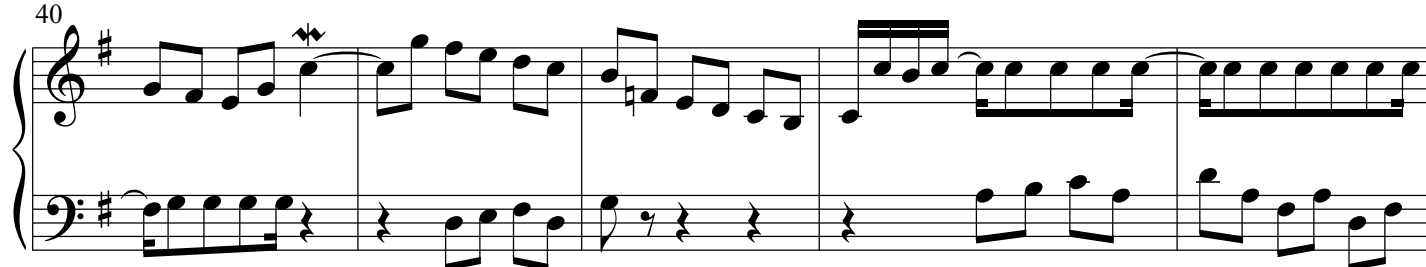
32



36



40



45



Fuga

Measures 1-12 of the Fuga. The piece is in G major (one sharp) and 3/4 time. Measures 1-12 are marked with a '7' above the staff, indicating a seven-measure phrase. The notation shows a treble and bass staff with various rhythmic patterns, including eighth and sixteenth notes, and rests.

Measures 13-18 of the Fuga. Measure 13 is marked with a '13' above the staff. The notation continues with a treble and bass staff, featuring eighth and sixteenth notes and rests.

Measures 19-24 of the Fuga. Measure 19 is marked with a '19' above the staff. The notation continues with a treble and bass staff, featuring eighth and sixteenth notes and rests.

Measures 25-30 of the Fuga. Measure 25 is marked with a '25' above the staff. The notation continues with a treble and bass staff, featuring eighth and sixteenth notes and rests.

Measures 31-36 of the Fuga. Measure 31 is marked with a '31' above the staff. The notation continues with a treble and bass staff, featuring eighth and sixteenth notes and rests.

Measures 37-42 of the Fuga. Measure 37 is marked with a '37' above the staff. The notation continues with a treble and bass staff, featuring eighth and sixteenth notes and rests.

43

Measures 43-48 of the musical score. The system consists of two staves. The upper staff is in treble clef and the lower staff is in bass clef. Both staves are in the key of D major (one sharp). The music features a mix of eighth and sixteenth notes, with some rests and trills indicated by a 'tr' symbol.

49

Measures 49-54 of the musical score. The system consists of two staves. The upper staff is in treble clef and the lower staff is in bass clef. Both staves are in the key of D major (one sharp). The music features a mix of eighth and sixteenth notes, with some rests and trills indicated by a 'tr' symbol.

55

Measures 55-60 of the musical score. The system consists of two staves. The upper staff is in treble clef and the lower staff is in bass clef. Both staves are in the key of D major (one sharp). The music features a mix of eighth and sixteenth notes, with some rests and trills indicated by a 'tr' symbol.

61

Measures 61-66 of the musical score. The system consists of two staves. The upper staff is in treble clef and the lower staff is in bass clef. Both staves are in the key of D major (one sharp). The music features a mix of eighth and sixteenth notes, with some rests and trills indicated by a 'tr' symbol.

67

Measures 67-72 of the musical score. The system consists of two staves. The upper staff is in treble clef and the lower staff is in bass clef. Both staves are in the key of D major (one sharp). The music features a mix of eighth and sixteenth notes, with some rests and trills indicated by a 'tr' symbol.